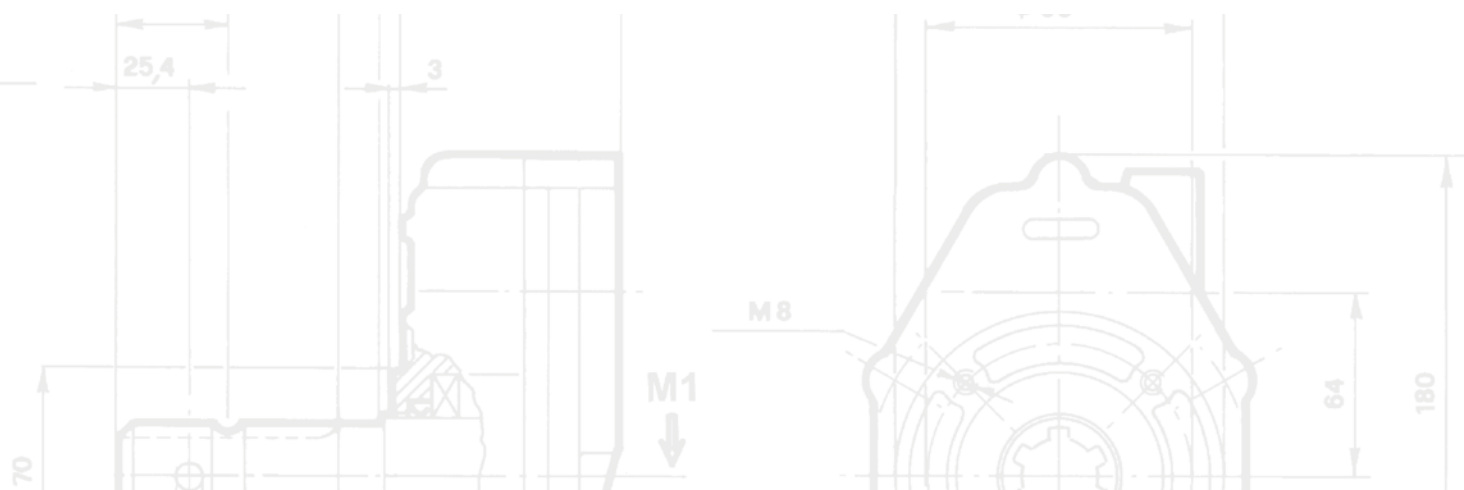


Каталог МУЛЬТИПЛИКАТОРЫ



www.GPA.by



Мультипликаторы предназначены для присоединения шестеренных насосов к валу отбора мощности (ВОМ) сельскохозяйственных тракторов. Скорость вращения ВОМ составляет 540 оборотов в минуту, которая преобразуется в номинальную частоту вращения шестеренного насоса. Допускаются также другие скорости вращения ВОМ, при условии, что на выходе скорость вращения не превысит 3000 об/мин.

КОРПУС: Алюминиевый изготовлен литьем под давлением либо литой чугунный

ШЕСТЕРНИ: Шестерни были рассчитаны в соответствии со стандартами ISO / DIN 3990-88. Изготовлены из стали UNI18 PCR M03

ВАЛЫ: Изготовлены из стали UNI16 CRN4, соединяются с шестернями шлицами.

МОМЕНТЫ: Моменты вращения, указанные в таблицах, рассчитаны на непрерывный цикл работы. При кратковременных нагрузках могут быть превышены на 20%.

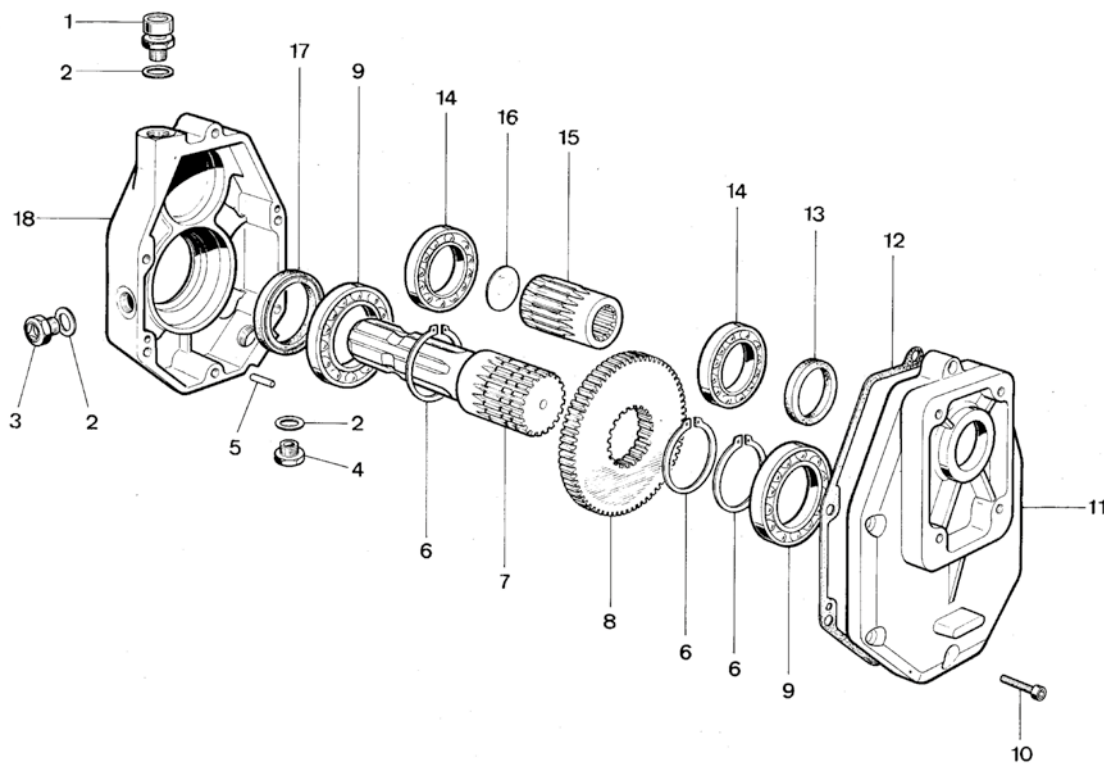
СМАЗКА: Мы рекомендуем использовать масло типа SAE 90 для обеспечения максимального срока службы и правильной работы устройства. Проверяйте уровень масла через специальное окно каждые 1500 часов. Первая замена масла после 60 до 80 рабочих часов.

РАБОЧАЯ ТЕМПЕРАТУРА: Длительно рабочая температура не должна превышать 120°C.

ПРИСОЕДИНЕНИЕ НАСОСА: Для присоединения насоса к мультипликатору необходима полумуфта и фланцевый адаптер (без адаптера присоединяются насосы с еврофланцем) в соответствии с моделью насоса. При заказе указывайте тип вала и фланца насоса.

50001

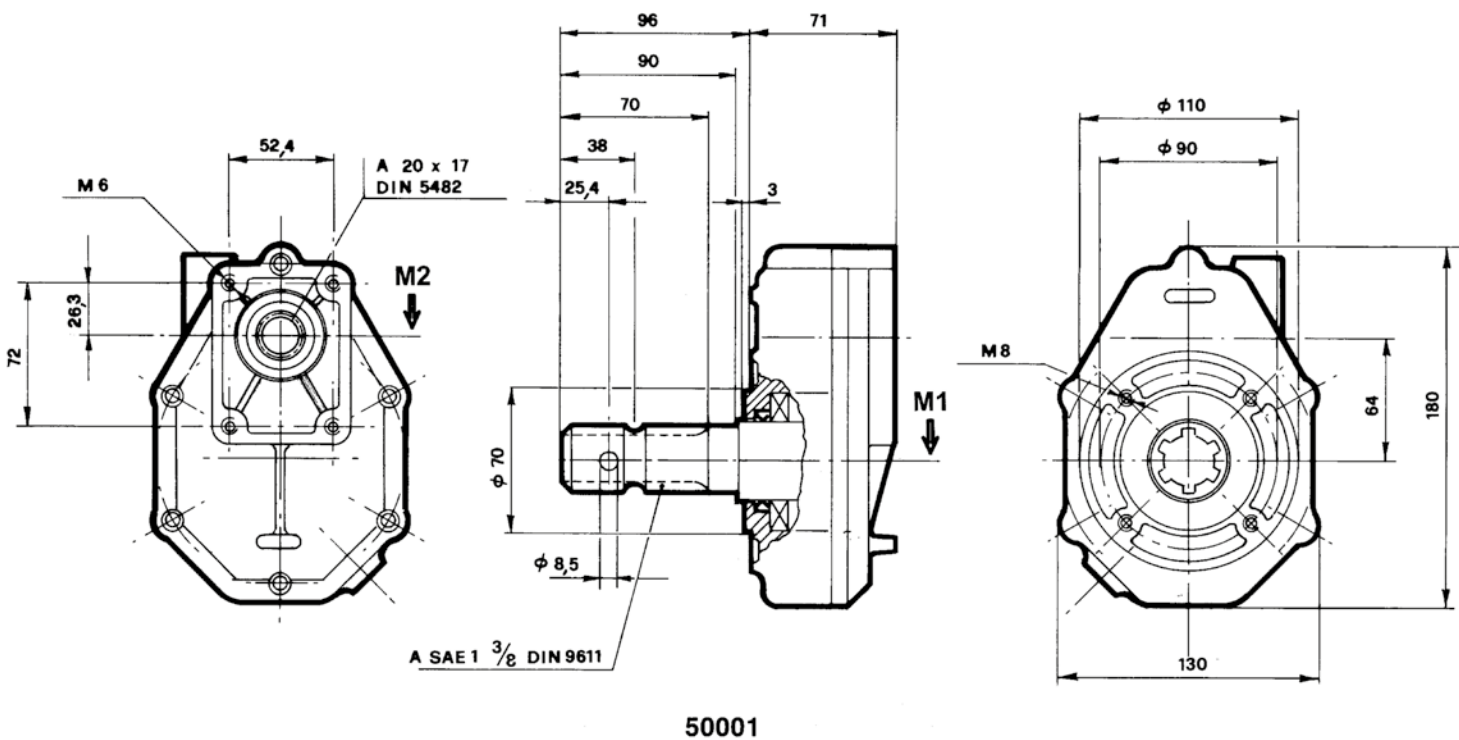
SERIE: 50000



POS.	DENOMINAZIONE	DENOMINATION	DESCRIPTION	BEZEICHNUNG	Q.TÀ
1	Tappo sfiato olio 1/4"	Bouchon reniflard huile 3/4"	Oil breather plug 1/4"	Entlüftungsschraube	1
2	Guarnizione	Joint	Gasket	Dichtung	3
3	Tappo livello olio 1/4"	Bouchon niveau huile 1/4"	Oil level plug 1/4"	Ölstandschaube	1
4	Tappo scarico olio 3/8"	Bouchon vidange huile 3/8"	Oil drain plug 3/8"	Ölablaßschraube	1
5	Spina Ø 6x12	Cheville D.6x12	Peg Ø 6x12	Stift, Durchm. 6x12	2
6	Anello seeger Ø 40	Circlip D.40	Snap ring Ø 40	Seegerring, Durchm. 40	3
7	Albero presa di forza maschio 1" 3/8	Arbre prise de force mâle 1" 3/8	Male P.T.O. shaft 1" 3/8	Antriebswelle 1 3/8"	1
8	Corona	Couronne	Ring gear	Zahnkranz	1
9	Cuscinetto 6008	Palier 6008	Bearing 6008	Kugellager 6008	2
10	Vite T.C.E.I. M6x30	Vis T.C.H.C. M6x30	Socket capscrew	Zylinderkopfschraube	6
11	Coperchio	Couvercle	Cover	Deckel	1
12	Guarnizione	Joint	Gasket	Dichtung	1
13	Anello di tenuta 30x40x7	Bague d'étanchéité 30x40x7	Sealing ring	Dichtring, 30x40x7	1
14	Cuscinetto 6006	Palier 6006	Bearing 6006	Kugellager 6006	2
15	Pignone	Pignon	Pinion gear	Ritzel	1
16	Coperchietto DIN 470	Petit couvercle DIN 470	Cap DIN 470	Deckel, DIN 470	1
17	Anello di tenuta 40x52x7	Bague d'étanchéité 40x52x7	Sealing ring	Dichtring 40x52x7	1

SERIE: 50000

ТОЛЬКО ПОД
ЗАКАЗ

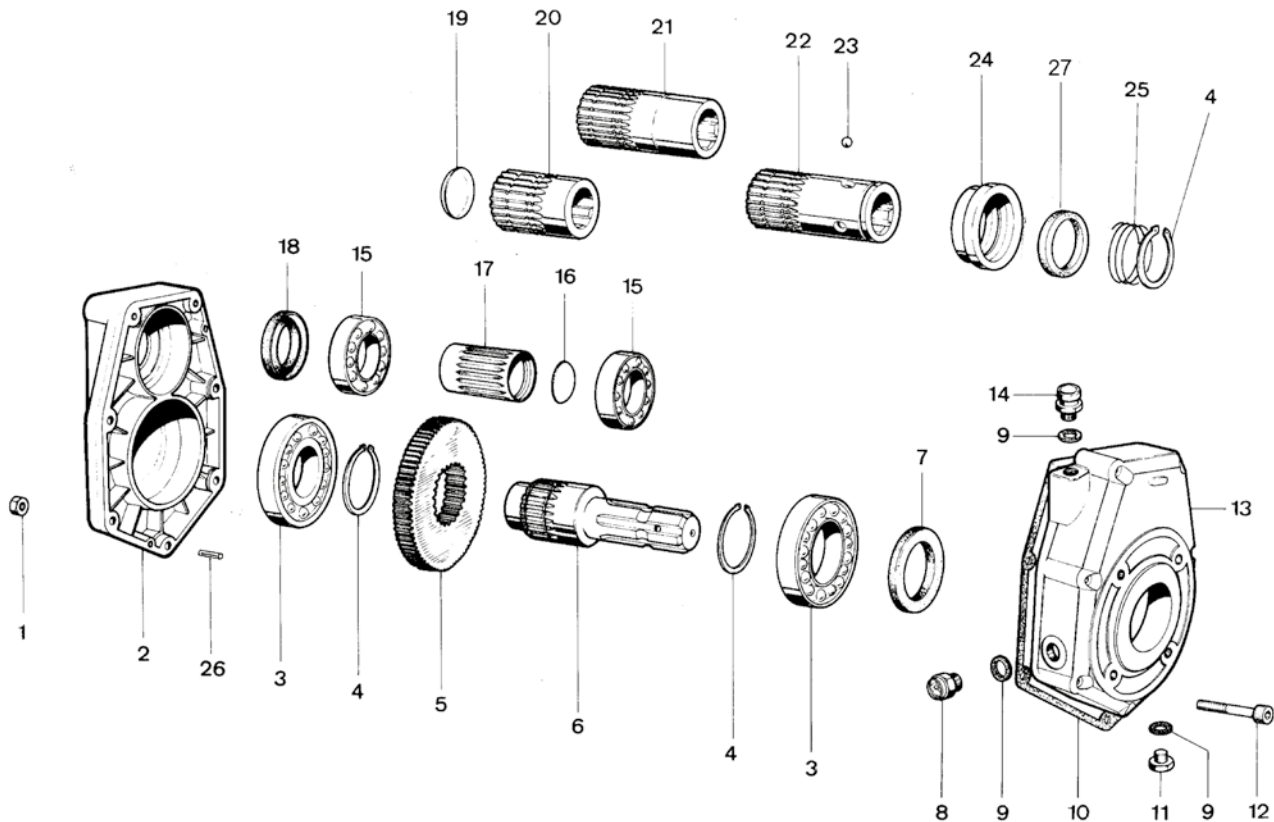


50001

Объем масла, л. 0,150

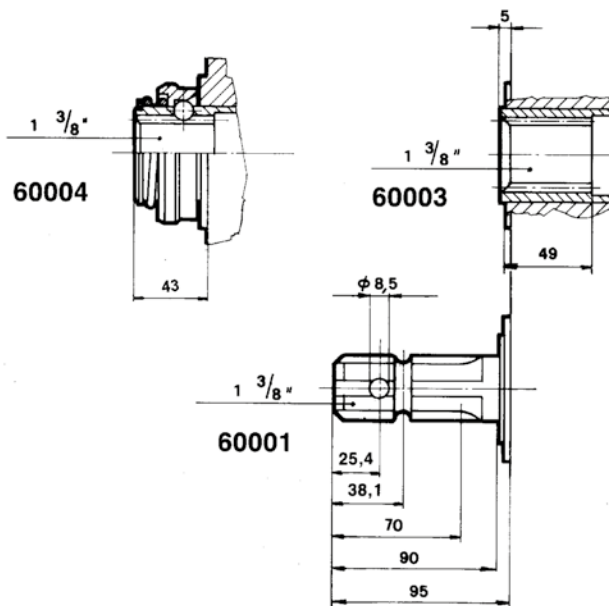
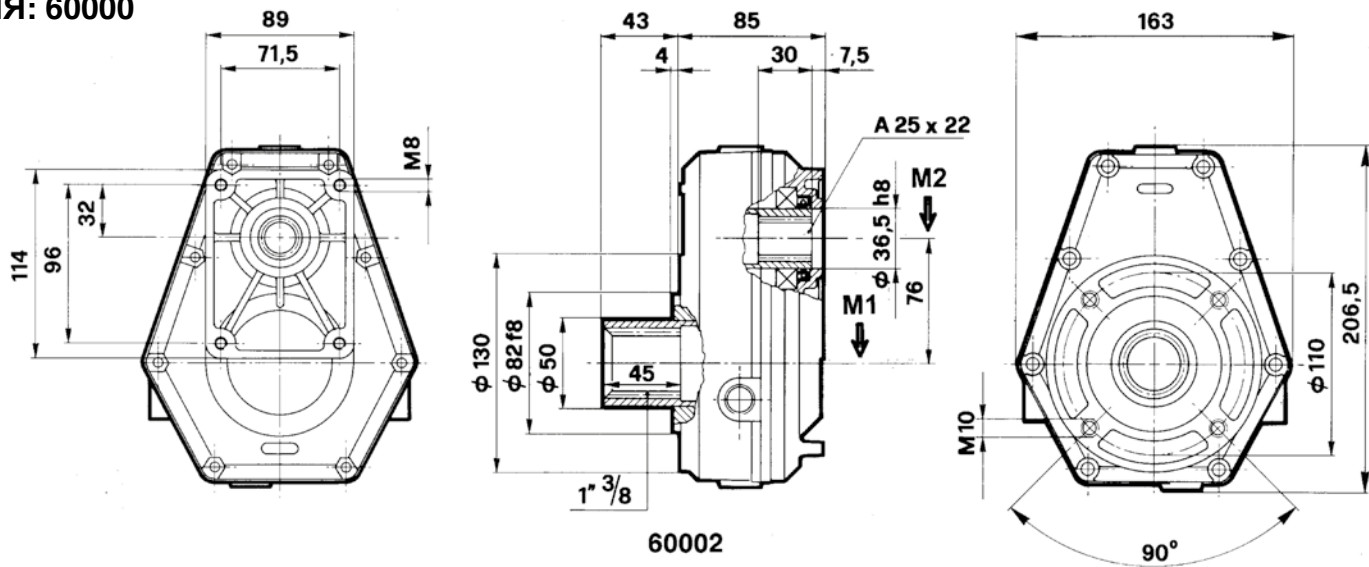
M1 da Nm	M2 da Nm	N. 1 Об/мин	N. 2 Об/мин	I N.1/N.2	МОЩНОСТЬ Kw	G Kg
10,6	3	540	1890	3,5	5	3
11,2	2,9	540	2052	3,8	5	3
8,5	2,1	540	2160	4	5	3

Серия: 60000



POS.	DENOMINAZIONE	DENOMINATION	DESCRIPTION	BEZEICHNUNG	Q.TÀ
1	Dado M6	Ecrou M6	Nut M6	Mutter M6	8
2	Coperchio	Couvercle	Cover	Dekel	1
3	Cuscinetto tipo 6010	Palier 6010	Bearing type 6010	Kugellager, Type 6010	2
4	Seeger Ø 50	Circlip Ø 50	Snap ring dia. 50	Seegerring, Durchm. 50	3
5	Corona	Couronne	Ring gear	Zahnkranz	1
6	Albero presa di forza maschio 1 3/8"	Arbre prise de force mâle 1" 3/8	Male P.T.O. shaft 1" 3/8	Antriebswelle mit Aussenverkeilung 1 3/8"	1
7	Anello di tenuta Ø 50x65x8	Bague d'étanchéité 50x65x8	Sealing ring Ø 50x65x8	Dichtring, Durchm. 50x65x8	1
8	Tappo livello olio 3/8"	Bouchon niveau huile 3/8"	Oil level plug 3/8"	Ölstandschaube 3/8"	1
9	Guarnizione	Joint	Gasket	Dichtung	3
10	Guarnizione	Joint	Gasket	Dichtung	1
11	Tappo scarico olio 3/8"	Bouchon vidange huile 3/8"	Oil drain plug 3/8"	Ölablaßschraube 3/8"	1
12	Vite T.C.E.I. M6x50	Vis T.C.H.C. M6x50	Socket capscrew M6x50	Zylinderkopfschraube mit Innensechskant M6x50	8
13	Scatola	Carcasse	Housing	Gehäuse	1
14	Tappo sfiato olio 3/8"	Bouchon reniflard huile 3/8"	Oil breather plug 3/8"	Entlüftungsschraube 3/8"	1
15	Cuscinetto tipo 6007	Palier 6007	Bearing type 6007	Kugellager, Type 6007	2
16	Coperchietto DIN 470 - Ø 27	Petit couvercle DIN 470 D. 27	Cap DIN 470 Ø 27	Deckel DIN 470, Durchm. 27	1
17	Pignone	Pignon	Pinion Gear	Ritzel	1
18	Anello di tenuta Ø 35x52x7	Bague étanchéité 35x52x7	Sealing ring Ø 35x52x7	Dichtring, Durchm. 35x52x7	1
19	Coperchietto DIN 470 - Ø 40	Petit couvercle DIN 470 D. 40	Cap DIN 470 Ø 40	Deckel DIN 470, Durchm. 40	1
20	Albero presa di forza femmina 1 3/8" corto	Arbre prise de force femelle 1" 3/8 court	Female P.T.O. shaft 1" 3/8 short	Antriebswelle mit Innenverkeilung 1 3/8", kurz	1
21	Albero presa di forza femmina 1 3/8" lungo	Arbre prise de force femelle 1" 3/8 long	Female P.T.O. shaft 1" 3/8 long	Antriebswelle mit Innenverkeilung 1 3/8", lang	1
22	Albero presa di forza femmina 1 3/8" attacco rapido	Arbre prise de force femelle 1" 3/8 attelage rapide	Female P.T.O. shaft 1" 3/8 quick fitting	Antriebswelle mit Innenverkeilung 1 3/8", mit Schnellkupplung	1
23	Sfera	Bille	Ball	Kugel.	3
24	Anello porta molla	Bague porte-ressort	Spring ring	Federhaltering	1
25	Molla	Ressort	Spring	Feder	1
26	Spina 5x16	Goupille 5x16	Peg 5x16	Stift, Durchm. 5x16	2
27	Anello	Bague	Ring	Ring	1

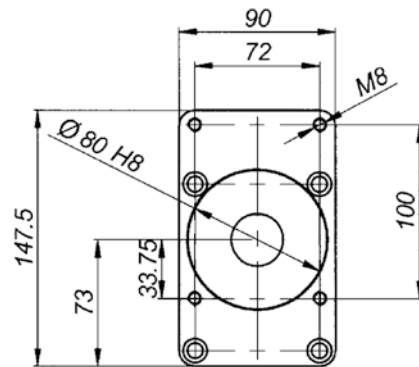
СЕРИЯ: 60000



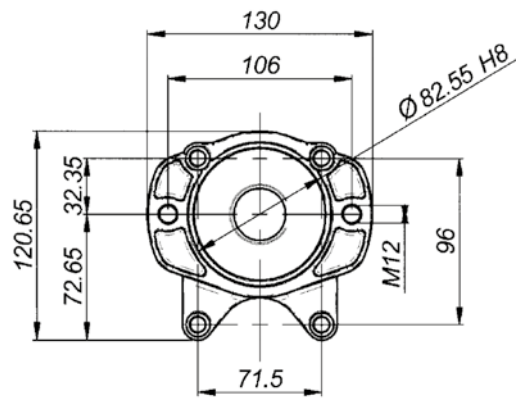
Объем масла, л. 0,220

M1 da Nm	M2 da Nm	N. 1 Об/мин	N. 2 Об/мин	I N.1/N.2	МОЩНОСТЬ Kw	G Kg
17,8	11,9	540	810	1,5	10	5,5
15,2	7,6	540	1080	2	10	5,5
16,5	6,6	540	1350	2,5	10	5,5
18	5,5	540	1680	3	10	5,5
18,6	5,8	540	1836	3,5	10	5,5
15,9	4,2	540	2052	3,8	10	5,5

• АДАПТЕРЫ ДЛЯ МУЛЬТИПЛИКАТОРОВ СЕРИИ: 60000



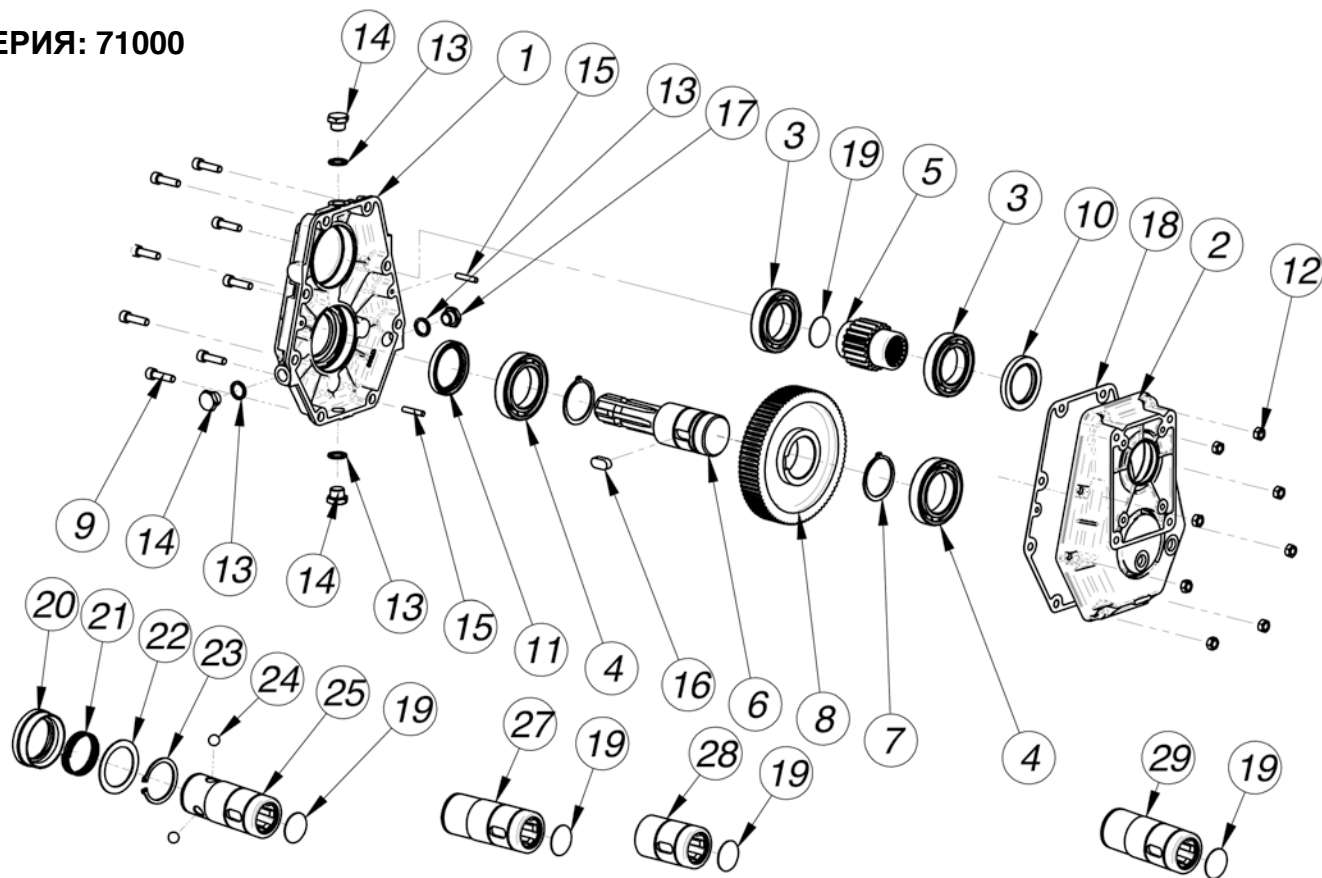
50100



60100

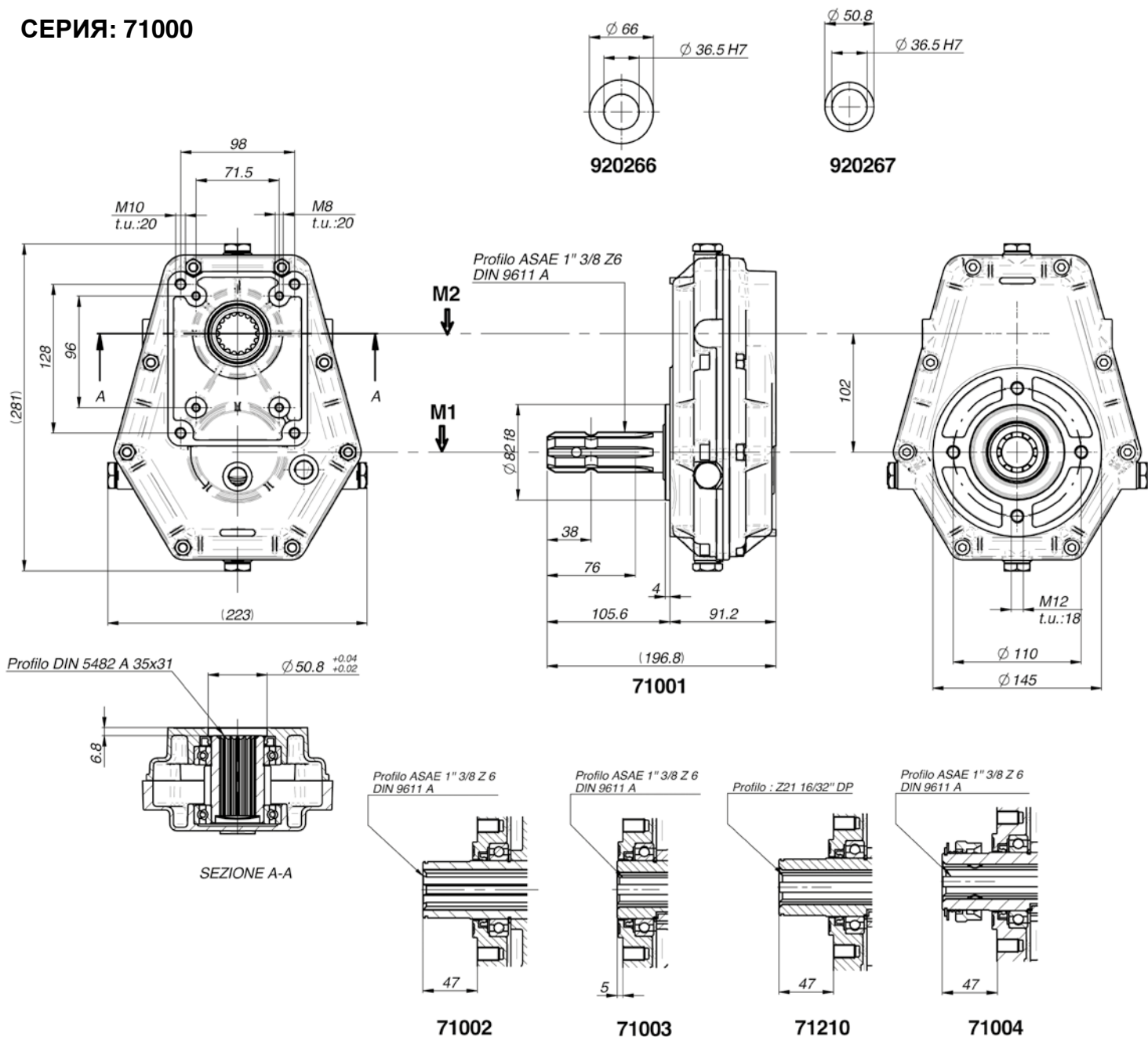
	FLANGIA: TIPO, BRIDE: TYPE FLANGE: TYPE, FLANSCHTYPE	
	Gr. 2 BOSCH	SAE A Gr. 2
Code	50100	60100
G	8	12
H	13	32

СЕРИЯ: 71000



Pos.	DENOMINAZIONE	DENOMINATION	DESCRIPTION	BEZEICHNUNG	Q.TA'
1	Scatola	Carcasse	Housing	Gubeisen	1
2	Coperchio	Couvercle	Cover	Deckel	1
3	Cuscinetto tipo 6009	Palier 6009	Bearing 6009	Kugellager Type 6009	2
4	Cuscinetto tipo 6010	Palier 6010	Bearing 6010	Kugellager Type 6010	2
5	Pignone	Pignon	Pinion gear	Ritzel	1
6	Albero presa di forza maschio 1"3/8 Z6	Arbre prise de force mâle 1"3/8 Z6	Female P.T.O. shaft 1"3/8 Z6	Antriebswelle mit Innenverkeilung 1"3/8 Z6	1
7	Anello seeger d.50	Circlip d.50	Snap ring d.50	Seegerring, Durchm. 50	2
8	Corona	Couronne	Ring gear	Zahnkranz	1
9	Vite V.T.C.E.I M8x30	Vis V.T.C.E.I M8x30	Socket capscrew M8x30	Zylinderkopfschraube mit Innensechskant M8x30	8
10	Anello di tenuta 45x65x8	Bague d'étanchéité 45x65x8	Sealing ring 45x65x8	Dichtring, Durchm. 45x65x8	1
11	Anello di tenuta 50x65x8	Bague d'étanchéité 50x65x8	Sealing ring 50x65x8	Dichtring, Durchm. 50x65x8	1
12	Dado M8	Ecrou M8	Nut M8	Mutter M8	8
13	Guarnizione	Joint	Gasket	Dichtung	4
14	Tappo scarico olio 3/8"	Bouchon vindage huile 3/8"	Oil drain plug 3/8"	Olablabschraube 3/8"	3
15	Spina d.6	Goupille d.6	Peg d.6	Stift Durchm. 6	2
16	Chiavetta 12x25	Clavette 12x25	Key 12x25	Keil 12x25	1
17	Tappo livello olio 3/8"	Bouchon niveau huile 3/8"	Oil drain plug 3/8"	Olstandschrabe 3/8"	1
18	Guarnizione	Joint	Gasket	Dichtung	1
19	Coperchietto DIN 470 D.37	Petit couvercle D.37 DIN 470	Cap DIN 470 D.37	Deckel DIN 470 , D.37	1
20	Anello porta molla	Bague porte-ressot	Spring ring	Federhültering	1
21	Molla	Ressot	Spring	Feder	1
22	Anello	Bague	Ring	Ring	1
23	Anello seeger UNI 7435 - 50	Circlip UNI 7435 - 50	Snap ring UNI 7435 - 50	Seegerring UNI 7435 - 50	1
24	Sfera d.13	Bille d.13	Ball d.13	Kugel Durchm 13	1
25	Albero presa di forza femmina 1" 3/8" Z6 attacco rapido	Arbre prise de force femelle 1"3/8" Z6 attelage rapide	Female P.T.O. shaft 1"3/8" Z6, Quick fitting	Antriebsw.m. Innenverkeilung 1" 3/8" Z6 , mit Schnellkupplung	1
27	Albero presa di forza femmina lunga 1" 3/8" Z6	Arbre prise de force femelle long 1"3/8" Z6	Female P.T.O. shaft 1"3/8" Z6 long	Antriebsw.m. Innenverkeilung 1" 3/8" Z6 , lang	1
28	Albero presa di forza femmina corta 1" 3/8" Z6	Arbre prise de force femelle long 1"3/8" Z6	Female P.T.O. shaft 1"3/8" Z6 long	Antriebsw.m. Innenverkeilung 1" 3/8" Z6 , lang	1
29	Albero presa di forza femmina lunga Z21 16/32" DP	Arbre prise de force femelle long Z21 16/32" DP	Female P.T.O. shaft Z21 16/32" DP long	Antriebsw.m. Innenverkeilung Z21 16/32" DP , lang	1

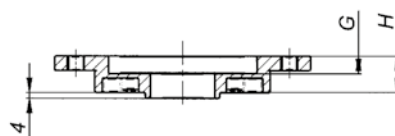
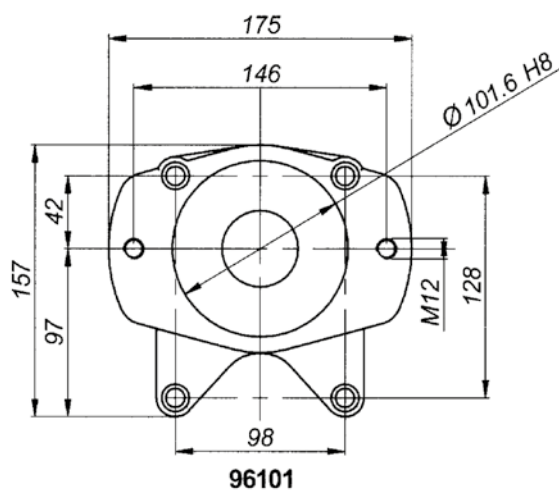
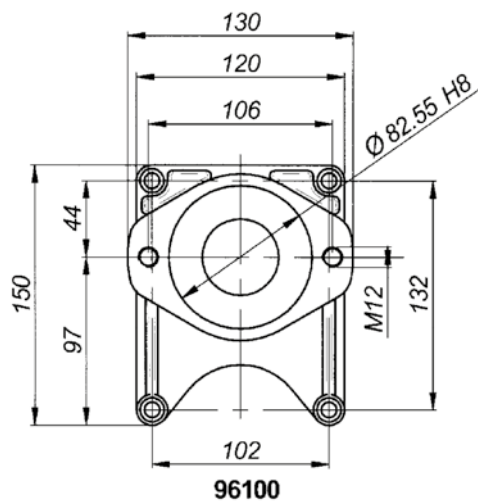
СЕРИЯ: 71000



Объем масла, л. 0,350

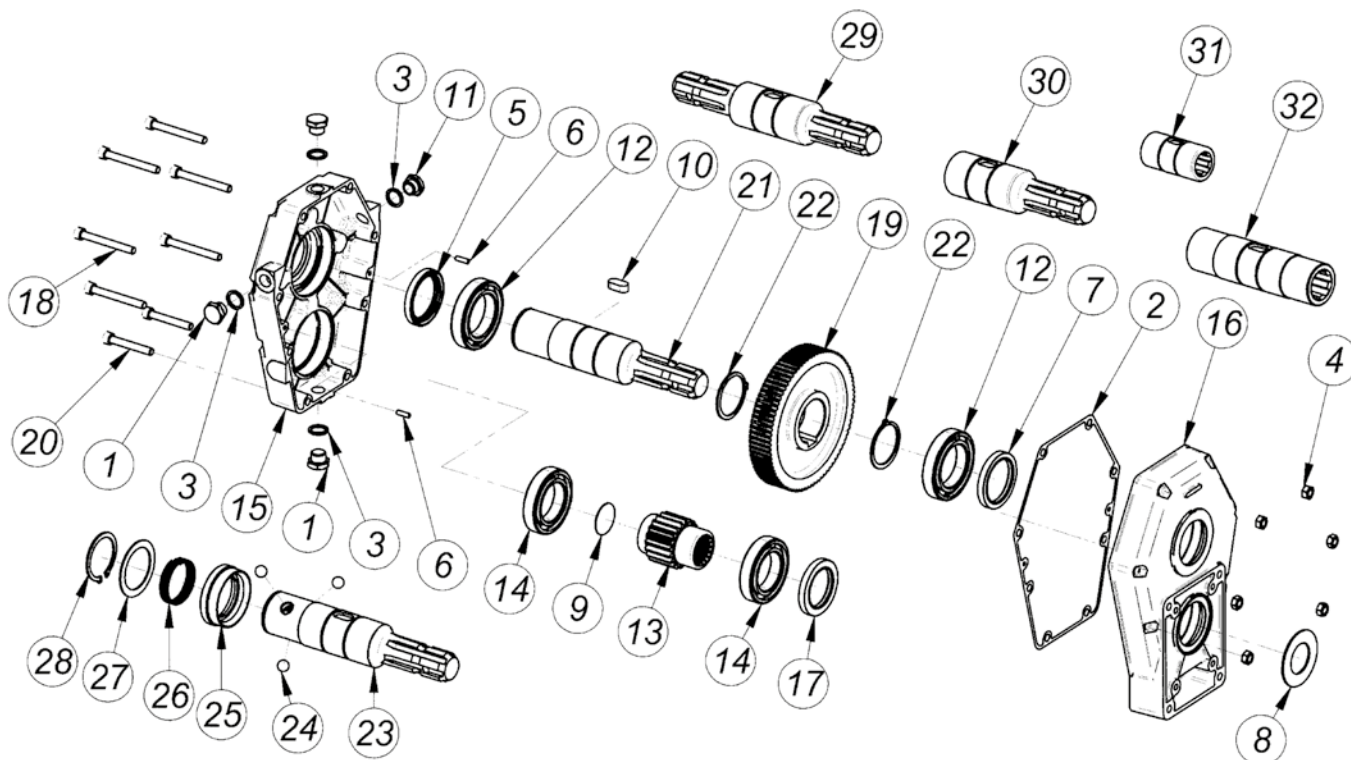
M1 da Nm	M2 da Nm	N. 1 г Об/мин	N. 2 Об/мин	I N.1/N.2	МОЩНОСТЬ Kw	G Kg
31	31	540	540	1	20	8,4
38	26	540	810	1,5	20	8,4
43	21	540	1080	2,2	20	8,4
46	18	540	1408	2,5	20	8,4
49	16	540	1620	3	20	8,4
46	13	540	1836	3,5	20	8,4
43,7	11,5	540	2057	3,8	20	8,4

• АДАПТЕРЫ ДЛЯ МУЛЬТИПЛИКАТОРОВ СЕРИИ: 71000



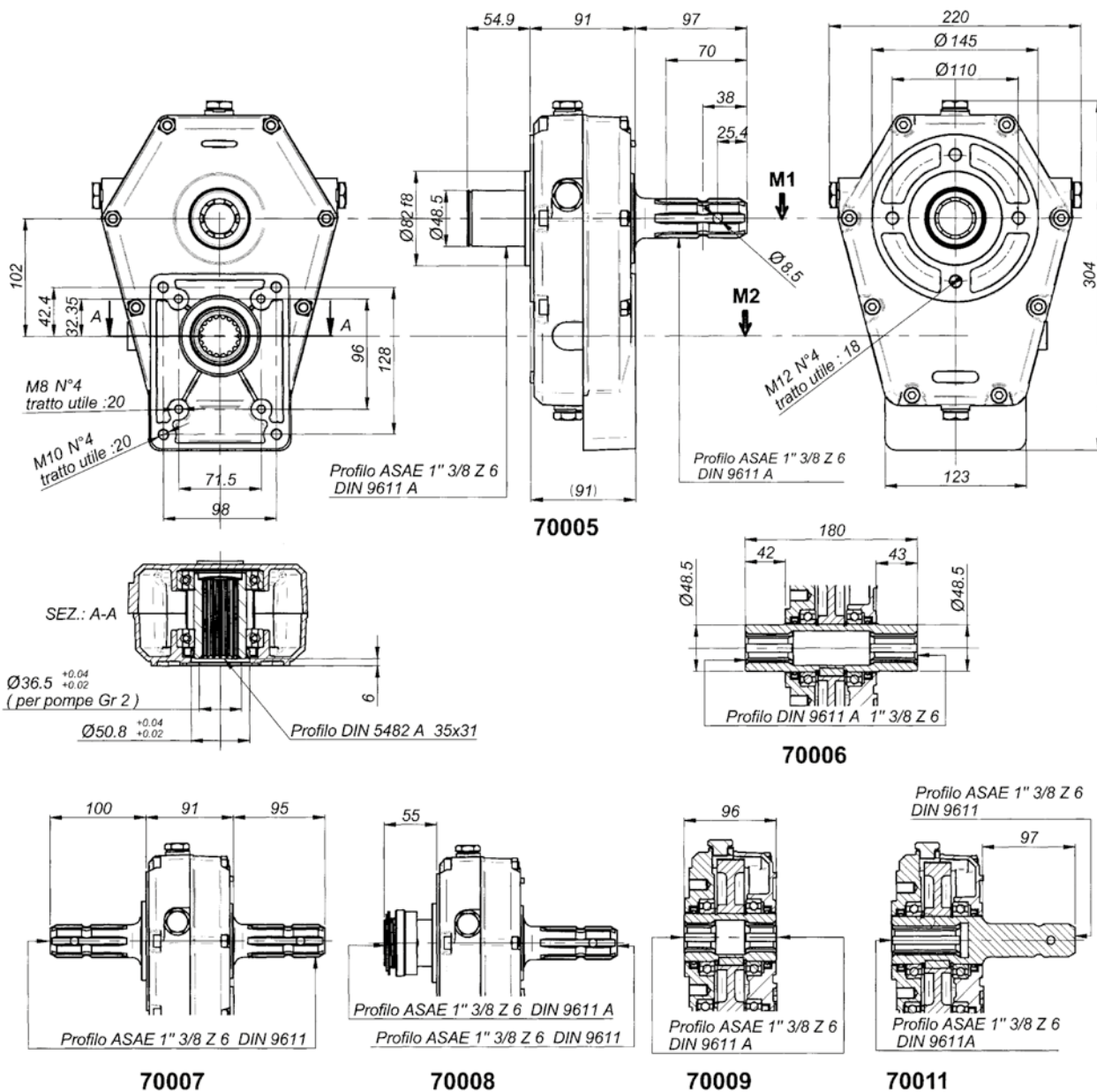
	FLANGIA: TIPO, BRIDE: TYPE FLANGE: TYPE, FLANSCHTYPE	
	SAE A Gr. 3	SAE B Gr. 3
Code	96100	96101
G	10	12
H	16	24

СЕРИЯ: 70000



Pos.	DENOMINAZIONE	DENOMINATION	DESCRIPTION	BEZEICHNUNG	Q.TA'
1	Tappo scarico olio 3/8"	Bouchon vindage huile 3/8"	Oil drain plug 3/8"	Olablabschraube 3/8"	3
2	Guarnizione	Joint	Gasket	Dichtung	1
3	Guarnizione	Jiont	Gasket	Dichtung	4
4	Dado M8	Ecrou M8	Nut M8	Mutter M8	6
5	Anello di tenuta 50x65x8	Bague d'EtanchÉitÉ 50x65x8	Sealing ring 50x65x8	Dichtring, Durchm. 50x65x8	1
6	Spina UNI 8751 5x16	Goupille UNI 8751 D.5x16	Peg UNI 8751 5x16	Stift durchm UNI 8751 5x16	2
7	Anello di tenuta 50x65x8	Bague d'EtanchÉitÉ 50x65x8	Sealing ring 50x65x8	Dichtring, Durchm. 50x65x8	1
8	Anello di centraggio per pompa Gr. 2	Bague de centrage pour pompe Gr.2	Centering ring for pump group 2	Zentrierring für pumpe Gr 2	1
9	Coperchietto DIN 470 D.37	Petit couvercle D.37 DIN 470	Cap DIN 470 D.37	Deckel DIN 470 , D.37	1
10	Chiavetta 12x25	Clavette 12x25	Key 12x25	Keil 12x25	1
11	Tappo livello olio 3/8"	Bouchon niveau huile 3/8"	Oil drain plug 3/8"	Olstandschrabe 3/8"	1
12	Cuscinetto tipo 6010	Palier 6010	Bearing 6010	Kugellager Type 6010	2
13	Pignone	Pignon	Pinion gear	Ritzel	1
14	Cuscinetto 6009	Palier 6009	Bearing 6009	Kugellager Type 6009	2
15	Scatola	Carcasse	Housing	Gehäuse	1
16	Coperchio	Couvercle	Cover	Deckel	1
17	Anello di tenuta 45x65x8	Bague d'EtanchÉitÉ 45x65x8	Sealing ring 45x65x8	Dichtring, Durchm. 45x65x8	1
18	Vite T.C.E.I. M8x70	Vis T.C.H.C. M8x70	Socket capscrew M8x70	Zylinderkopfschraube mit innensechskant M8x70	6
19	Corona	Couronne	Ring gear	Zahnkranz	1
20	Vite T.C.E.I. M8x55	Vis T.C.H.C M8x55	Socket capscrew M8x55	Zylinderkopfschraube mit Innensechskant M8x55	2
21	Albero presa di forza femmina-maschio 1" 3/8" Z6	Arbre prise de force femelle-Male 1"3/8" Z6	Female-Male P.T.O. shaft 1"3/8" Z6	Antriebsw.m. Innenverkeilung-Aussenverkeilung 1" 3/8" Z6	1
22	Anello seeger d.50	Circlip d.50	Snap ring d.50	Seegerring, Durchm. 50	2
23	Albero presa di forza Femmina-maschio attacco rapido 1" 3/8" Z6	Arbre prise de force Female-Male attelage rapide 1" 3/8" Z6	Female-Male P.T.O. - Quick fitting shaft 1" 3/8" Z6	Antriebsw.m. Innenverkeilung , mit schnellkupplung 1" 3/8" Z6	1
24	Sfera	Bille	Ball	Kugel	3
25	Anello porta molla	Bague porte-ressort	Spring ring	Federhaltering	1
26	Molla	Ressort	Spring	Feder	1
27	Anello	Bague	Ring	Ring	1
28	Anello seeger UNI 7435 - 50	Circlip UNI 7435 - 50	Snap ring UNI 7435 - 50	Seegerring UNI 7435 - 50	1
29	Albero presa di forza maschio-maschio 1" 3/8" Z6	Arbre prise de force Male-Male 1"3/8" Z6	Male-Male P.T.O. shaft 1"3/8" Z6	Antriebsw.m. Aussenverkeilung-Aussenverkeilung 1" 3/8" Z6	1
30	Albero presa di forza femmina-maschio 1" 3/8" Z6 corta	Arbre prise de force femelle-Male 1"3/8" Z6 court	Female-Male P.T.O. shaft 1"3/8" Z6 schort	Antriebsw.m. Innenverkeilung-Aussenverkeilung 1" 3/8" Z6 kurz	1
31	Albero presa di forza femmina corta 1" 3/8" Z6	Arbre prise de force femelle court 1" 3/8" Z6	Female P.T.O. shaft 1"3/8" Z6 schort	Antriebsw.m. Innenverkeilung 1" 3/8" Z6 kurz	1
32	Albero presa di forza femmina 1" 3/8" Z6	Arbre prise de force femelle 1"3/8" Z6	Female P.T.O. shaft 1"3/8" Z6	Antriebsw.m. Innenverkeilung 1" 3/8" Z6	1

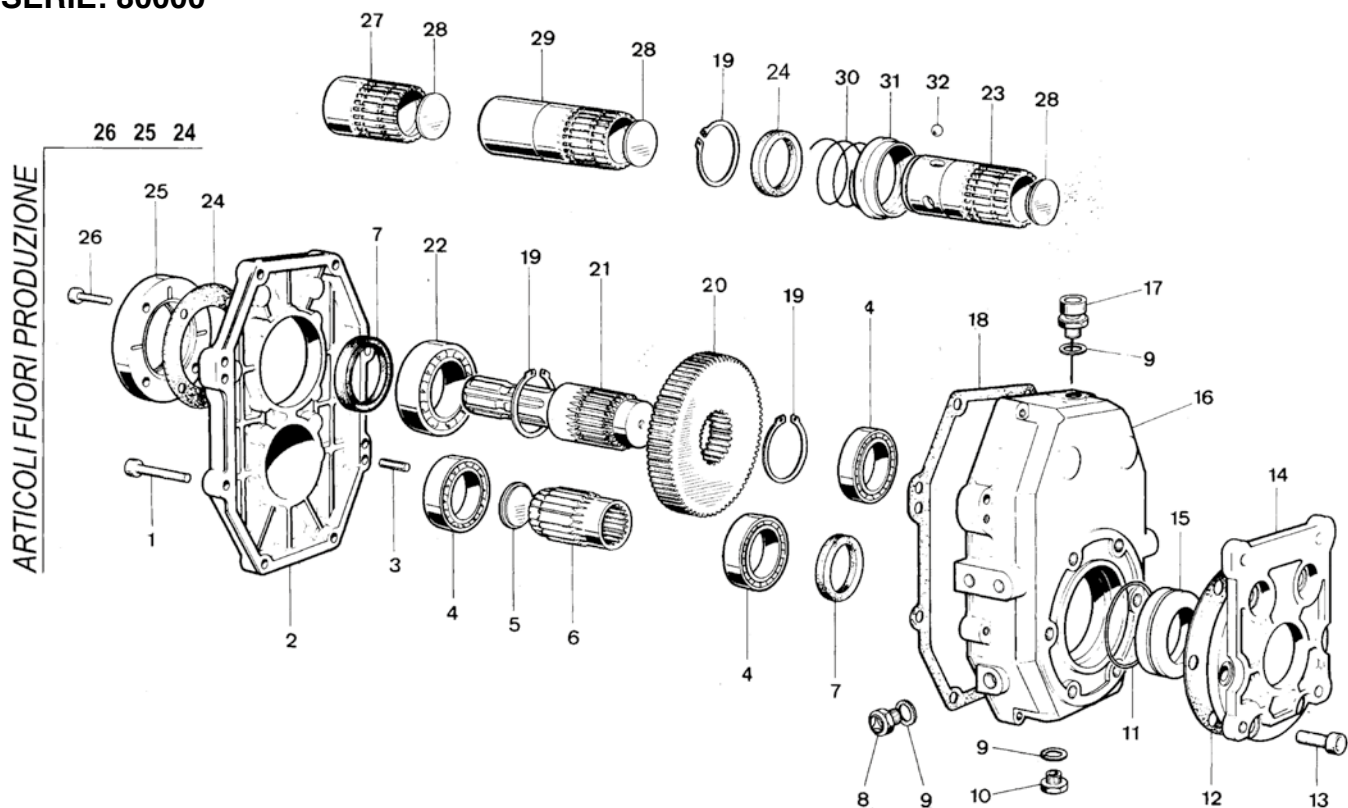
СЕРИЯ: 70000



Объем масла, л. 0,350

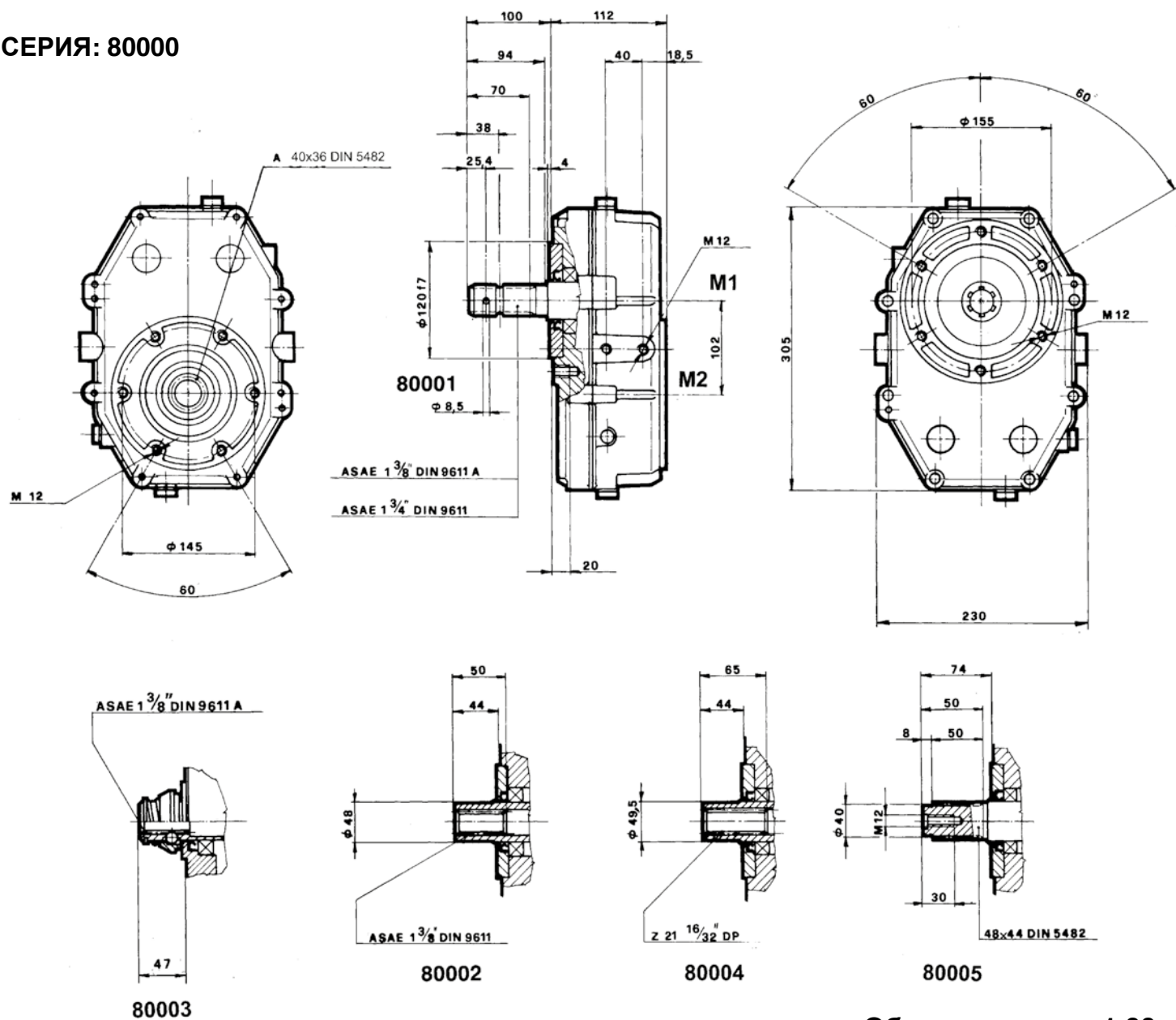
M1 da Nm	M2 da Nm	N. 1 g Об/мин	N. 2 Об/мин	I N.1/N.2	МОЩНОСТЬ Kw	G Kg
31	31	540	540	1	20	9,5
38	26	540	810	1,5	20	9,5
43	21	540	1080	2	20	9,5
46	18	540	1408	2,5	20	9,5
49	16	540	1620	3	20	9,5
46	13	540	1836	3,5	20	9,5
43,7	11,5	540	2057	3,8	20	9,5

SERIE: 80000



POS.	DENOMINAZIONE	DENOMINATION	DESCRIPTION	BEZEICHNUNG	Q.TÀ
1	Vite T.C.E.I. M8x40	Vis T.C.H.C. M8x40	Socket capscrew M8x40	Zylinderkopfs. m. Innensechsk. M8x40	8
2	Coperchio	Couvercle	Cover	Deckel	1
3	Spina 8x30	Goupille 8x30	Peg 8x30	Stift 8x30	2
4	Cuscinetto tipo 6010	Palier 6010	Bearing type 6010	Kugellager, Type 6010	3
5	Coperchietto DIN 470	Petit couvercle DIN 470	Cap DIN 470	Deckel DIN 470	1
6	Pignone	Pignon	Pinion Gear	Ritzel	1
7	Anello di tenuta Ø 50x65x8	Bague d'étanchéité 50x65x8	Sealing ring Ø 50x65x8	Dichtring, Durchm. 50x65x8	2
8	Tappo	Bouchon	Plug	Schraube	1
9	Guarnizione	Joint	Gasket	Dichtung	3
10	Tappo scarico olio	Bouchon vidange huile	Oil drain plug	Ölablaßschraube	1
11	Anello OR	Bague torique	O-Ring	O-Ring	1
12	Guarnizione	Joint	Gasket	Dichtung	1
13	Vite T.C.E.I. M12x20	Vis T.C.H.C. M12x20	Socket capscrew M12x20	Zylinderkopfs. m. Innensechskant M12x20	6
14	Flangia	Bride	Flange	Flansch	1
15	Anello porta corteco	Bague porte-bague corteco	Corteco Ring	Corteco-Ring	1
16	Scatola	Carcasse	Housing	Gehäuse	1
17	Asta sfiato e livello olio	Jauge de reniflard et niveau d'huile	Oil dipstick with vent	Entlüftungs und Ölmesstab	1
18	Guarnizione	Joint	Gasket	Dichtung	1
19	Anello seeger	Circlip	Snap ring	Seegerring	3
20	Corona	Couronne	Ring gear	Zahnkranz	1
21	Albero presa di forza maschio 1 3/8"	Arbre prise de force mâle 1" 3/8	Male P.T.O. shaft 1" 3/8	Antriebswelle mit Aussenverkeilung 1 3/8"	1
22	Cuscinetto tipo 6210	Palier 6210	Bearing type 6210	Kugellager, Type 6210	1
23	Albero presa di forza femmina 1 3/8"	Arbre prise de force femelle 1" 3/8	Female P.T.O. shaft 1" 3/8	Antriebswelle mit Innenverkeilung 1 3/8"	1
24	Guarnizione	Joint	Gasket	Dichtung	1
25	Coperchietto	Petit couvercle	Cap	Deckel	1
26	Vite T.C.E.I. M6x20	Vis T.C.H.C. M6x20	Socket capscrew M6x20	Zylinderkopfs. m. Innensechskant M6x20	4
27	Albero presa di forza femmina 1 3/8" corto	Arbre prise de force femelle 1" 3/8 court	Female P.T.O. shaft 1" 3/8 short	Antriebsw. m. Innenverkeilung 1 3/8", kurz	1
28	Coperchietto	Petit couvercle	Cap	Deckel	3
29	Albero presa di forza femmina 1 3/8" lungo	Arbre prise de force femelle 1" 3/8 long	Female P.T.O. shaft 1" 3/8 long	Antriebsw. m. Innenverkeilung 1 3/8", lang	1
30	Molla	Ressort	Spring	Feder	1
31	Anello porta molla	Bague porte-ressort	Spring ring	Federhaltering	1
32	Sfera	Bille	Ball	Kugel	3
33	Anello	Bague	Ring	Ring	1

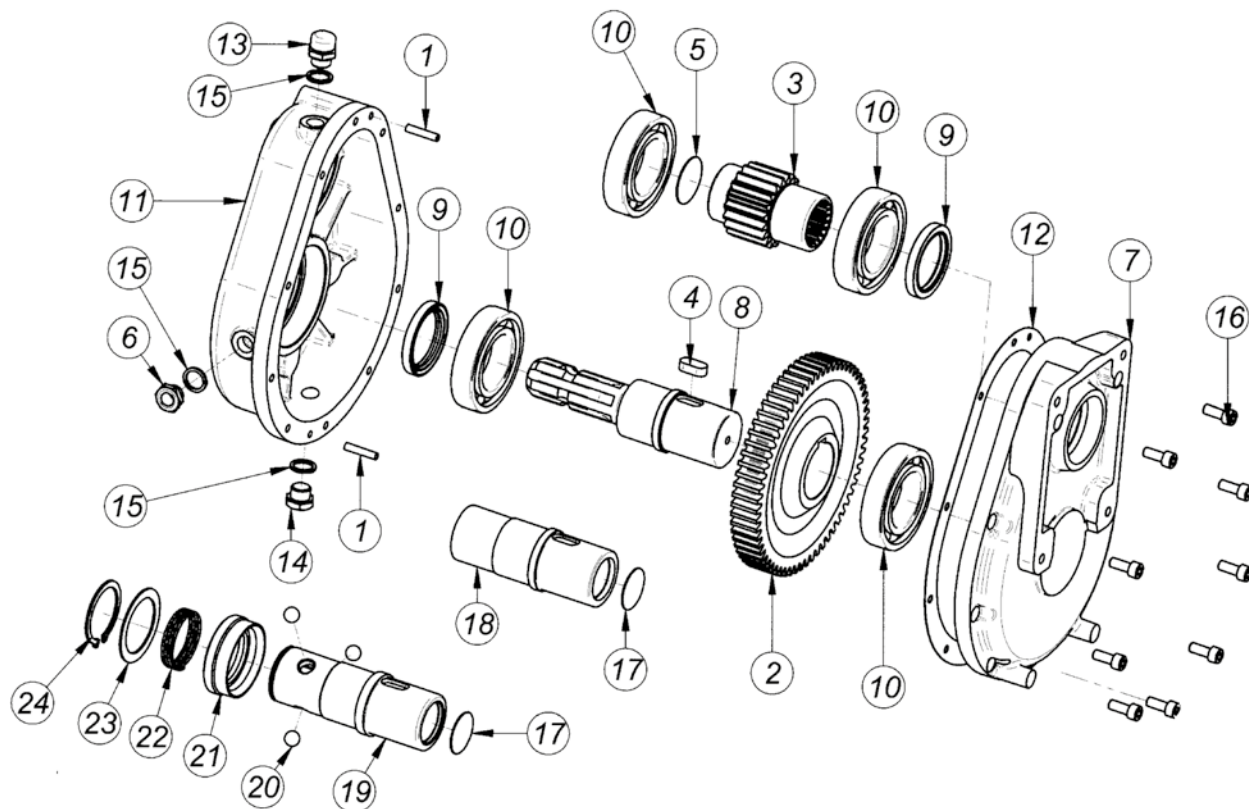
СЕРИЯ: 80000



Объем масла, л. 1,00

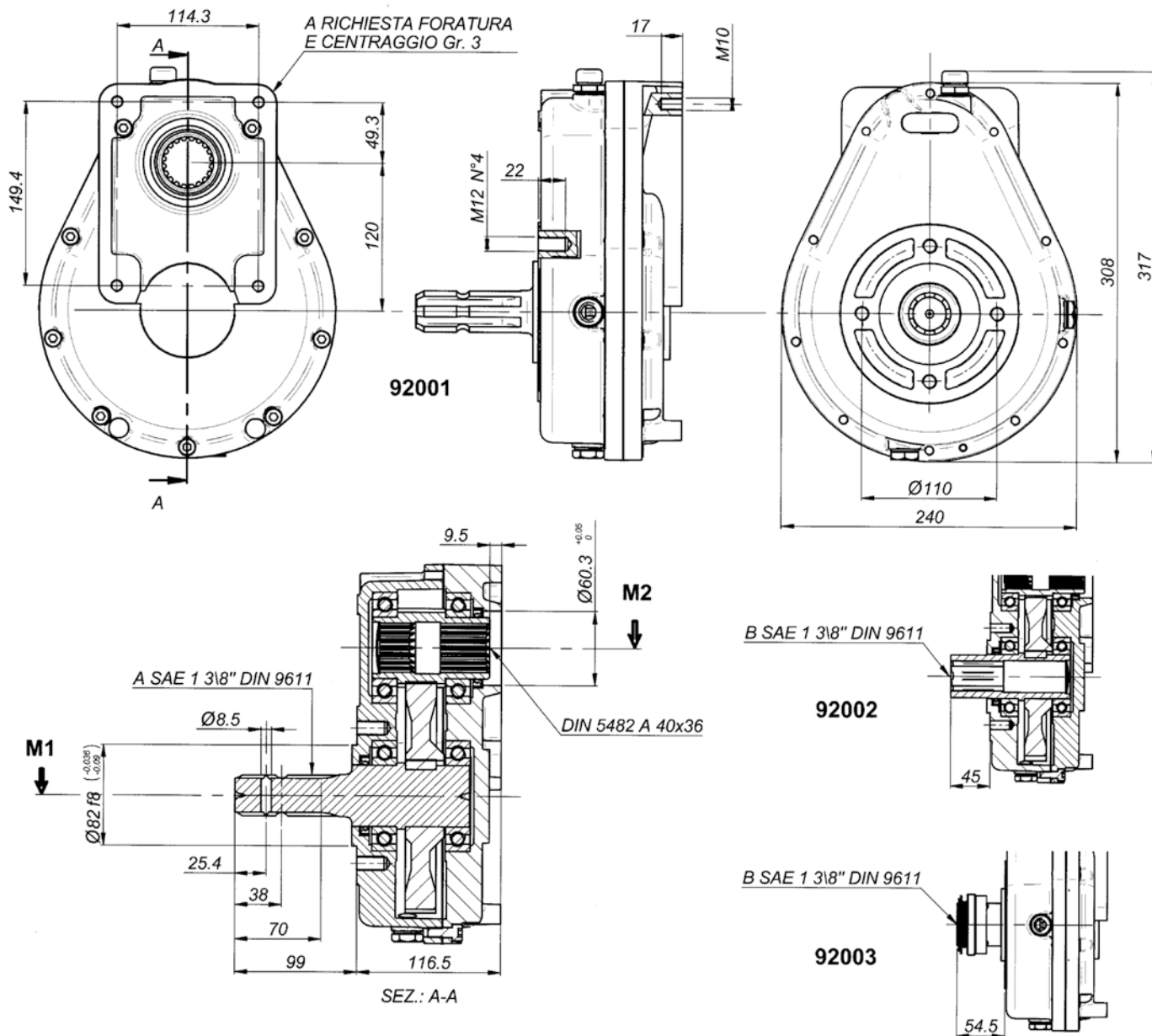
M1 da Nm	M2 da Nm	N. 1 Об/мин	N. 2 Об/мин	I N.1/N.2	МОЩНОСТЬ Kw	G Kg
46,6	46,6	540	540	1	36	13,5
48	32	540	810	1,5	36	13,5
48,4	24,2	540	1080	2	36	13,5
46,8	18	540	1408	2,5	36	13,5
48,9	16,3	540	1620	3	36	13,5
45,9	13,5	540	1836	3,5	36	13,5
47,5	12	540	2052	3,8	36	13,5
47,2	11,8	540	2160	4	36	13,5
47	9,8	540	2592	4,8	36	13,5

СЕРИЯ: MLT 3,5



Pos.	DENOMINAZIONE	DENOMINATION	DESCRIPTION	BEZEICHNUNG	Q.TA'
1	Spina d.6	Goupille d.6	Peg d.6	Stift Durchm. 6	2
2	Corona	Couronne	Ring gear	Zahnkranz	1
3	Pignone	Pignon	Pinion gear	Ritzel	1
4	Chiavetta 12x25	Clavette 12x25	Key 12x25	Keil 12x25	1
5	Coperchietto DIN 470 D.42	Petit couvercle D.42 DIN 470	Cap DIN 470 D.42	Deckel DIN 470 , D.42	1
6	Tappo livello olio 3/8"	Bouchon niveau huile 3/8"	Oil drain plug 3/8"	Ölstandschraube 3/8"	1
7	Coperchio	Couvercle	Cover	Deckel	1
8	Albero presa di forza maschio 1" 3/8	Arbre prise de force male 1" 3/8	Male P.T.O. shaft 1" 3/8	Antriebswelle mit Aussenverkeilung 1" 3/8	1
9	Anello di tenuta 50x65x8	Bague d'ÉtanchÉitÉ 50x65x8	Sealing ring 50x65x8	Dichtring, Durchm. 50x65x8	2
10	Cuscinetto tipo 6210	Pallier 6210	Bearing 6210	Kugellager tipo 6210	4
11	Scatola	Carcasse	Housing	Gehäuse	1
12	Guarnizione	Joint	Gasket	Dichtung	1
13	Tappo sfiato olio 3/8"	Bouchon renifard huile 3/8"	Oil breather plug 3/8"	Ölablabschraube 3/8"	1
14	Tappo scarico olio 3/8"	Bouchon vindage huile 3/8"	Oil drain plug 3/8"	Ölablabschraube 3/8"	1
15	Guarnizione	Jiont	Gasket	Dichtung	3
16	Vite T.C.E.I. M8x20	Vis T.C.H.C M8x20	Socket capscrew M8x20	Zylinderkopfschraube mit Innensechskant M8x20	9
17	Coperchietto DIN 470 D.37	Petit couvercle D.37 DIN 470	Cap DIN 470 D.37	Deckel DIN 470 , D.37	1
18	Albero presa di forza femmina 1" 3/8	Arbre prise de force femelle 1" 3/8	Femelle P.T.O. shaft 1" 3/8	Antriebswelle mit Innenverkeilung 1" 3/8	1
19	Albero presa di forza femmina 1" 3/8" Z6 attacco rapido	Arbre prise de force femelle 1"3/8" Z6 attelage rapide	Female P.T.O. shaft 1"3/8" Z6, Quick fitting	Antriebsw.m. Innenverkeilung 1" 3/8" Z6 , mit Schnellkupplung	1
20	Sfera	Bille	Ball	Kugel	3
21	Anello porta molla	Bague porte-ressot	Spring ring	Federhaltering	1
22	Molla	Ressort	Spring	Feder	1
23	Anello	Bague	Ring	Ring	1
24	Anello seeger UNI 7435 - 50	Circlip UNI 7435 - 50	Snap ring UNI 7435 - 50	Seegerring UNI 7435 - 50	1

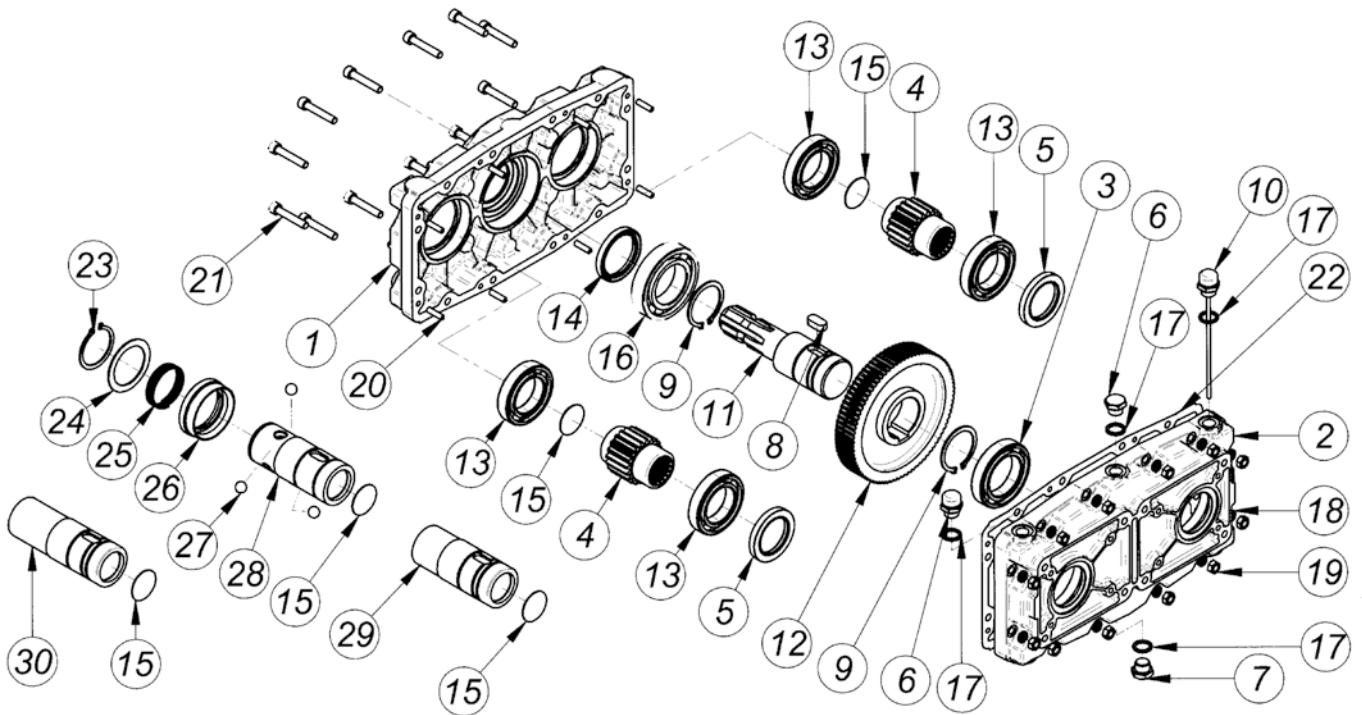
SERIE: MLT 3,5



Объем масла, л. 0,600

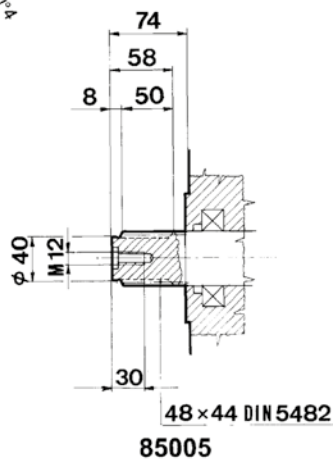
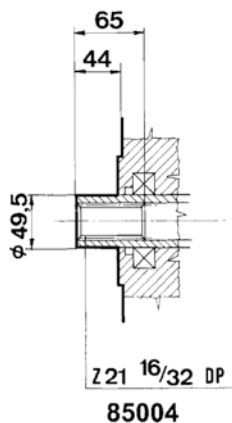
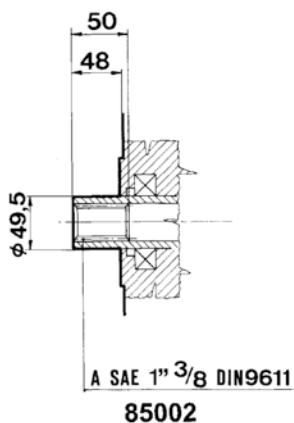
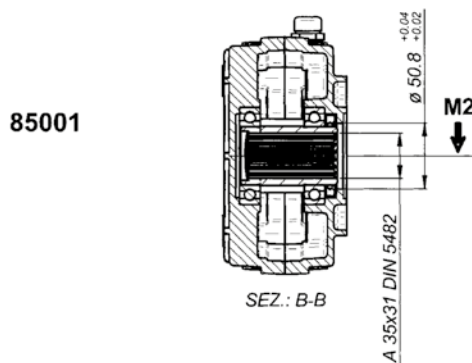
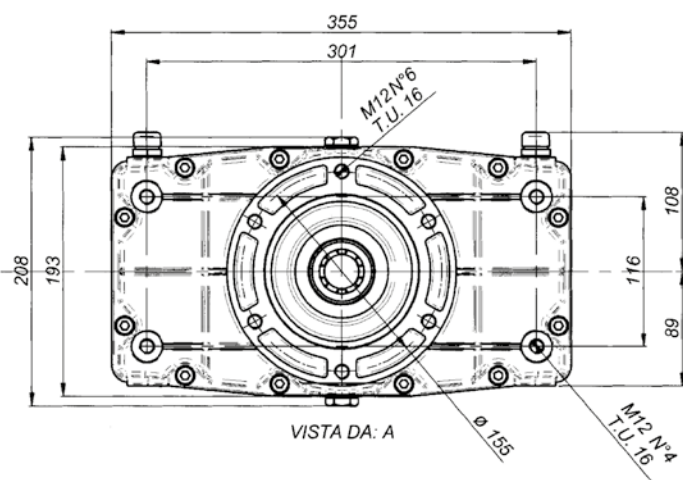
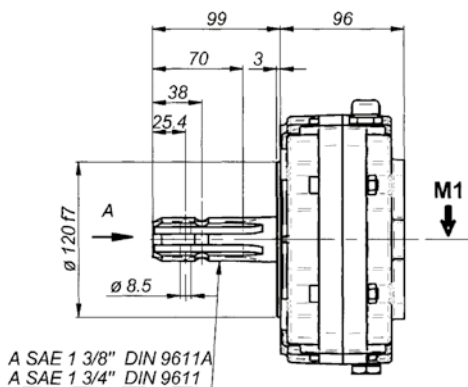
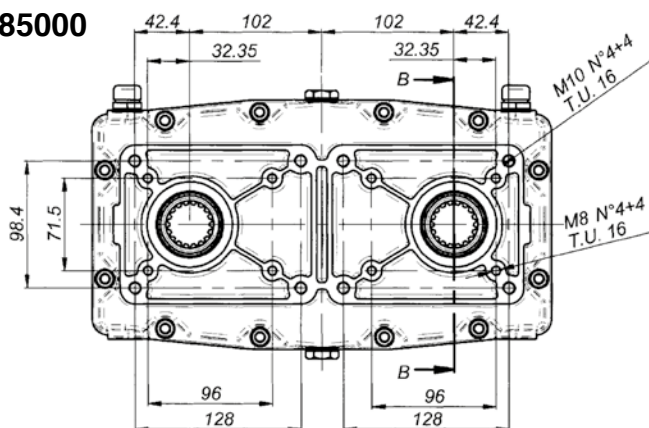
M1 da Nm	M2 da Nm	N. 1 g Об/мин	N. 2 Об/мин	I N.1/N.2	МОЩНОСТЬ Kw	G Kg
80	40	2500	1250	2	40	16
88	35	2500	1000	2,5	40	16
99	32	2500	806	3,1	40	16
105	28	2500	675	3,7	40	16

SERIE: 85000



Pos.	DENOMINAZIONE	DENOMINATION	DESCRIPTION	BEZEICHNUNG	Q.TA'
1	Scatola	Carcasse	Housing	Gehäuse	1
2	Coperchio	Couvercle	Cover	Deckel	1
3	Cuscinetto tipo 6010	Palier 6010	Bearing 6010	Kugellager Type 6010	1
4	Pignone	Pignon	Pinion gear	Ritzel	2
5	Anello di tenuta 45x65x8	Bague d'étanchéité 45x65x8	Sealing ring 45x65x8	Dichtring, Durchm. 45x65x8	2
6	Tappo olio 3/8"	Bouchon huile 3/8"	Oil plug 3/8"	Olaschraube 3/8"	2
7	Tappo scarico olio 3/8"	Bouchon vindage huile 3/8"	Oil drain plug 3/8"	Olablabschraube 3/8"	1
8	Chiavetta 12x25	Clavette 12x25	Key 12x25	Keil 12x25	1
9	Anello seeger UNI 7435 - 50	Circlip UNI 7435 - 50	Snap ring UNI 7435 - 50	Seegerring UNI 7435 - 50	2
10	Asta sfiato e livello olio	Jauge de reniflard et niveau d'huile	Oil dipstick with vent	Entlüftungs und Ölmesstab	1
11	Albero presa di forza maschio 1 3/8 Z6	Arbre prise de force male 1 3/8 Z6	Female P.T.O. shaft 1 3/8 Z6	Antriebswelle mit Innenverkeilung 1 3/8 Z6	1
12	Corona	Couronne	Ring gear	Zahnkranz	1
13	Cuscinetto tipo 6009	Palier 6009	Bearing 6009	Kugellager Type 6009	4
14	Anello di tenuta 50x65x8	Bague d'étanchéité 50x65x8	Sealing ring 50x65x8	Dichtring, Durchm. 50x65x8	1
15	Coperchietto DIN 470 D.38	Petit couvercle D.38 DIN 470	Cap DIN 470 D.38	Deckel DIN 470, D.38	5
16	Cuscinetto tipo 6210	Pallier 6210	Bearing 6210	Kugellager tipo 6210	1
17	Guarnizione	Joint	Gasket	Dichtung	4
18	Rondella Grower d.8	Rondelle Grower d.8	Wascher Grower d.8	Rosette Grower d.8	12
19	Dado M8	Ecrou M8	Nut M8	Mutter M8	12
20	Spina UNI 8751 6x24	Goupille UNI 8751 D.6x24	Peg UNI 8751 6x24	Stift durchm UNI 8751 6x24	8
21	Vite V.T.C.E.I M8x45	Vis V.T.C.E.I M8x45	Socket capscREW M8x45	Zylinderkopfschraube mit Innensechskant M8x45	12
22	Guarnizione	Joint	Gasket	Dichtung	1
23	Anello seeger UNI 7435-48	Circlip UNI 7435-48	Snap ring UNI 7435-48	Seegerring UNI 7435-48	1
24	Anello	Bague	Ring	Ring	1
25	Molla	Ressort	Spring	Feder	1
26	Anello porta molla	Bague porte-ressort	Spring ring	Federhalterung	1
27	Sfera	Bille	Ball	Kugel	3
28	Albero presa di forza femmina attacco rapido 1 3/8 Z6	Arbre prise de force femelle A.R. 1 3/8 Z6	Female P.T.O. shaft - quick fitting 1 3/8 Z6	Antriebsw.m. Innenverkeilung 1 3/8 Z6 schnellkup	1
29	Albero presa di forza femmina corto 1 3/8	Arbre prise de force femelle court 1 3/8	Femelle-femelle P.T.O. shaft short 1 3/8	Antriebswelle mit Innenverkeilung kurz 1 3/8	1
30	Albero presa di forza femmina lungo 1 3/8	Arbre prise de force femelle long 1 3/8	Femelle-femelle P.T.O. shaft long 1 3/8	Antriebswelle mit Innenverkeilung lang 1 3/8	1

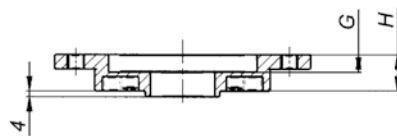
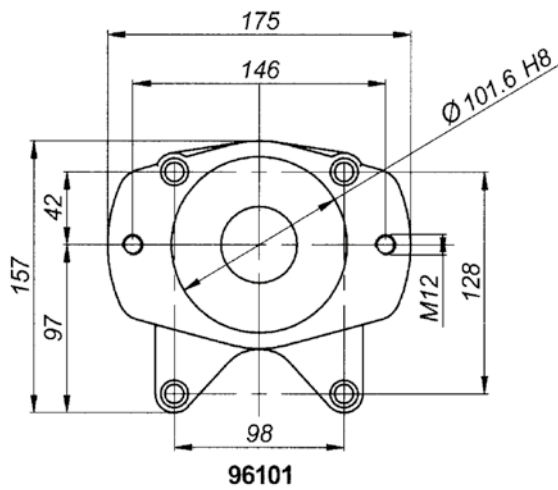
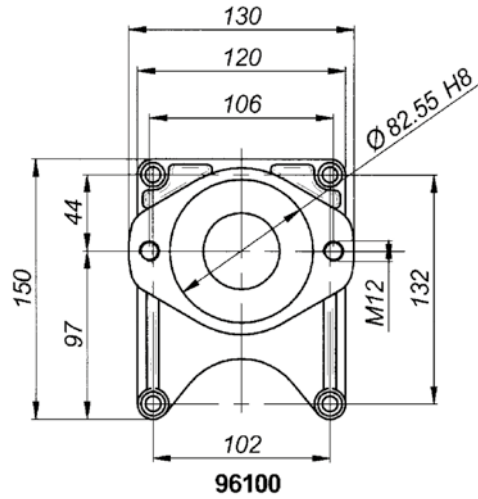
SERIE: 85000



Объем масла, л. 1,30

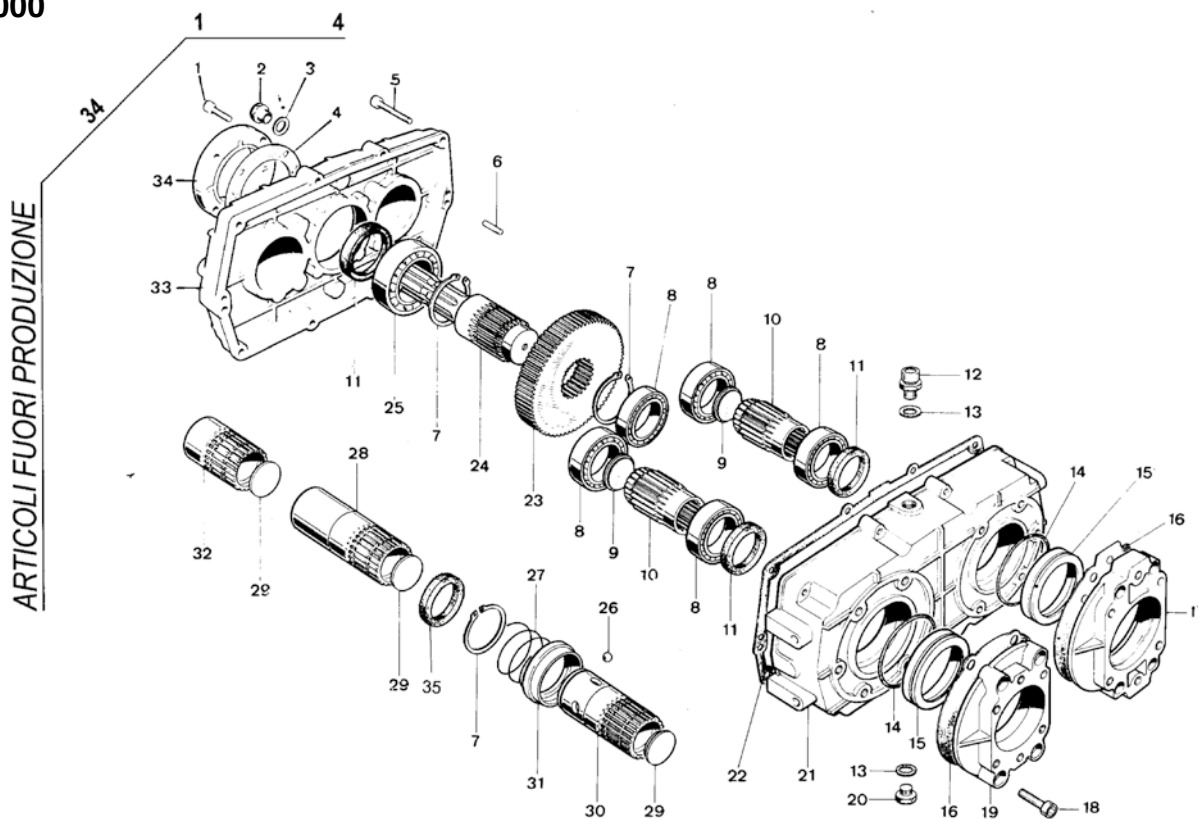
M1 da Nm	M2 da Nm	N. 1 Об/мин	N. 2 Об/мин	I N.1/N.2	МОЩНОСТЬ Kw	G Kg
63,4	31,7	540	540	1	35	14
76,8	25,6	540	810	1,5	35	14
86,8	23,7	540	1080	2	35	14
92,5	17,8	540	1408	2,5	35	14
96,6	16,1	540	1620	3	35	14
90,4	13,3	540	1836	3,5	35	14
87,4	16,6	540	2057	3,8	35	14

• АДАПТЕРЫ ДЛЯ МУЛЬТИПЛИКАТОРОВ СЕРИИ: 85000



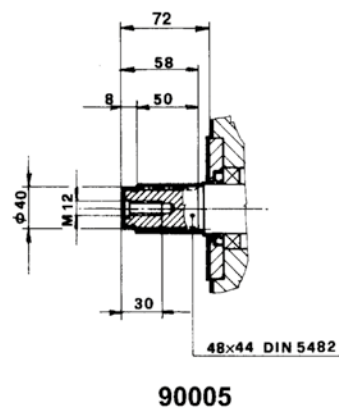
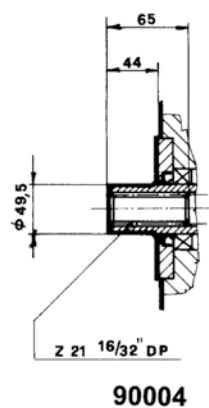
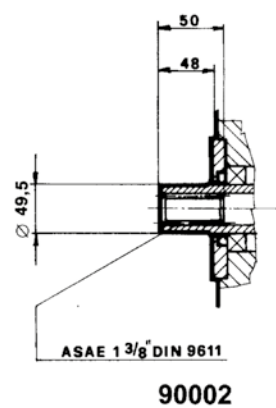
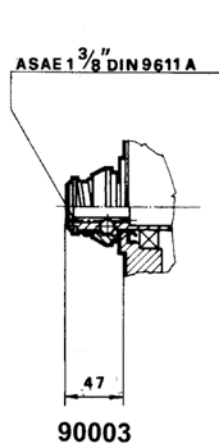
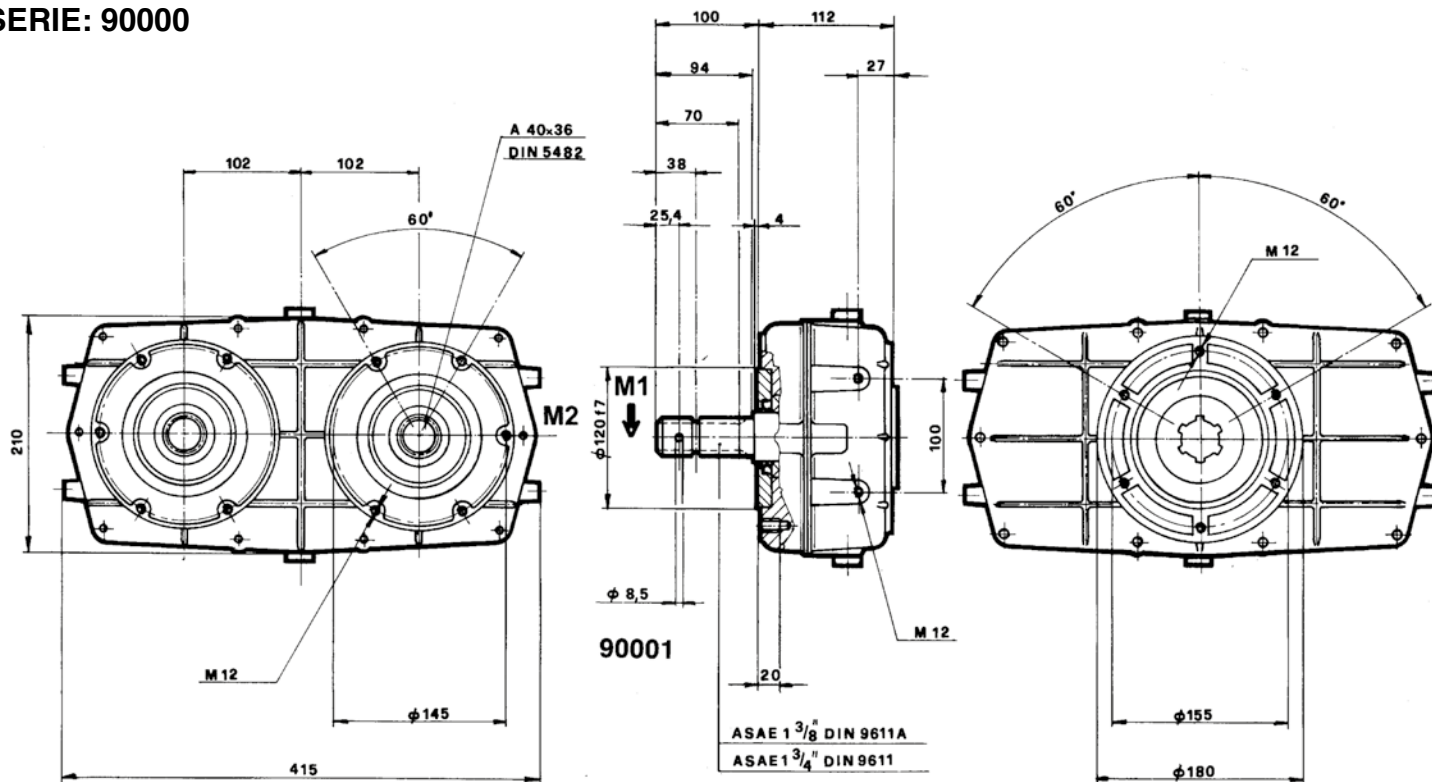
	FLANGIA: TIPO, BRIDE: TYPE FLANGE: TYPE, FLANSCHTYPE	
	SAE A Gr. 3	SAE B Gr. 3
Code	96100	96101
G	10	12
H	16	24

SERIE: 90000



POS.	DENOMINAZIONE	DENOMINATION	DESCRIPTION	BEZEICHNUNG	Q.TA
1	Vite T.C.E.I. M6x20	Vis T.C.H.C. M6x20	Socket capscrew M6x20	Zylinderkopfs. m. Innensechskant M6x20	4
2	Tappo livello olio	Bouchon niveau huile	Oil level plug	Ölstandschraube	1
3	Guarnizione	Joint	Gasket	Dichtung	1
4	Guarnizione	Joint	Gasket	Dichtung	1
5	Vite T.C.E.I.	Vis T.C.H.C.	Socket capscrew	Zylinderkopfs. m. Innensechsk.	10
6	Spina Ø 6	Goupille D. 6	Peg Ø 6	Stift, Durchm. 6	2
7	Anello seeger Ø 58	Circlip D. 58	Snap ring Ø 58	Seegerring, Durchm. 58	3
8	Cuscinetto tipo 6010	Palier 6010	Bearing type 6010	Kugellager, Type 6010	5
9	Coperchietto DIN 470	Petit couvercle DIN 470	Cap DIN 470	Deckel DIN 470	2
10	Pignone	Pignon	Pinion Gear	Ritzel	2
11	Anello di tenuta Ø	Bague d'étanchéité D.	Sealing ring Ø	Dichtring, Durchm.	3
12	Asta sfiato e livello olio	Jauge de reniflard et niveau d'huile	Oil dipstick with vent	Entlüftungs und Ölmesstab	1
13	Guarnizione	Joint	Gasket	Dichtung	3
14	Anello OR	Bague torique	O-Ring	O-Ring	2
15	Anello porta corteco	Bague porte-bague corteco	Corteco Ring	Corteco-Ring	2
16	Guarnizione	Joint	Gasket	Dichtung	2
17	Flangia SAE B	Bride SAE B	Flange SAE B	Flansch SAE B	1
18	Vite T.C.E.I.	Vis T.C.H.C.	Socket capscrew	Zylinderkopfs. m. Innensechsk.	6
19	Flangia SAE A	Bride SAE A	Flange SAE A	Flansch SAE A	1
20	Tappo scarico olio 3/8"	Bouchon vidange huile 3/8"	Oil drain plug 3/8"	Ölablaßschraube 3/8"	1
21	Scatola	Carcasse	Housing	Gehäuse	1
22	Guarnizione	Joint	Gasket	Dichtung	1
23	Corona	Couronne	Ring gear	Zahnkranz	1
24	Albero presa di forza maschio 1 3/8"	Arbre prise de force mâle 1" 3/8	Male P.T.O. shaft 1" 3/8	Antriebswelle mit Aussenverkeilung 1 3/8"	1
25	Cuscinetto tipo 6210	Palier 6210	Bearing type 6210	Kugellager, Type 6210	1
26	Sfera	Bille	Ball	Kugel	3
27	Molla	Ressort	Spring	Feder	1
28	Albero presa di forza femmina 1 3/8" lungo	Arbre prise de force femelle 1" 3/8 long	Female P.T.O. shaft 1" 3/8 long	Antriebsw. m. Innenverkeilung 1 3/8", lang	1
29	Coperchietto DIN 470	Petit couvercle DIN 470	Cap DIN 470	Deckel DIN 470	3
30	Albero presa di forza femmina 1 3/8" I.R.	Arbre prise de force femelle 1" 3/8 A.R.	Female P.T.O. shaft - quick fitt. 1" 3/8	Antriebsw. m. Innenverk. 1 3/8" m. Schnellkup.	1
31	Anello porta molla	Bague porte-ressort	Spring ring	Federhaltering	1
32	Albero presa di forza femmina 1 3/8" corto	Arbre prise de force femelle 1" 3/8 court	Female P.T.O. shaft 1" 3/8 short	Antriebsw. m. Innenverkeilung 1 3/8", kurz	1
33	Coperchio	Couvercle	Cover	Dekel	1
34	Coperchietto	Petit couvercle	Cap	Deckel	1
35	Anello	Bague	Ring	Ring	1

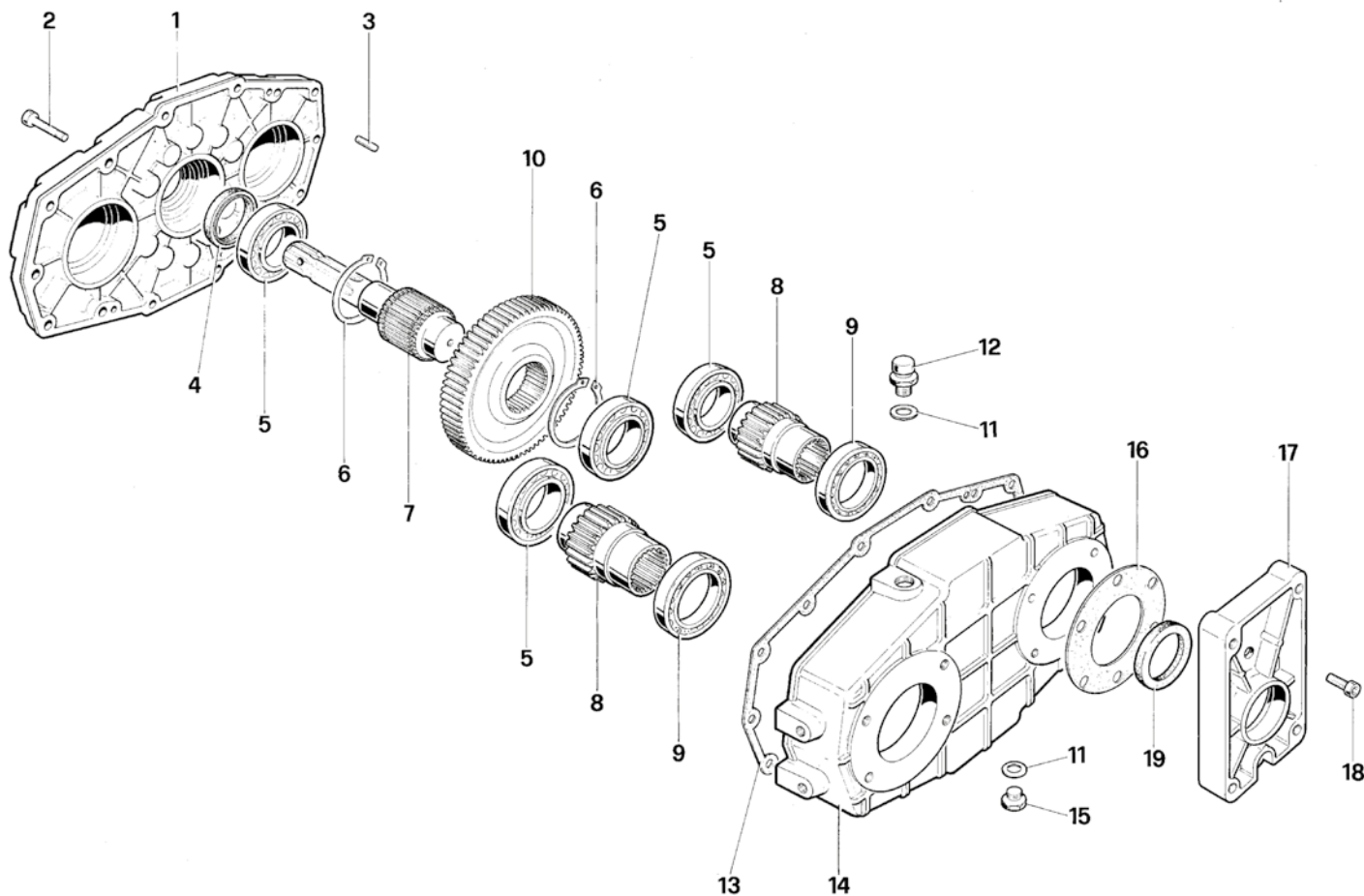
SERIE: 90000



Объем масла, л. 1,80

M1 da Nm	M2 da Nm	N. 1 Об/мин	N. 2 Об/мин	I N.1/N.2	МОЩНОСТЬ Kw	G Kg
93,4	46,6	540	540	1	45	18
96	32	540	810	1,5	45	18
96,8	24,2	540	1080	2	45	18
93,6	18	540	1408	2,5	45	18
97,8	16,3	540	1620	3	45	18
91,8	13,1	540	1836	3,5	45	18
95	12	540	2052	3,8	45	18
94,40	11,8	540	2160	4	45	18
94	9,8	540	2592	4,8	45	18

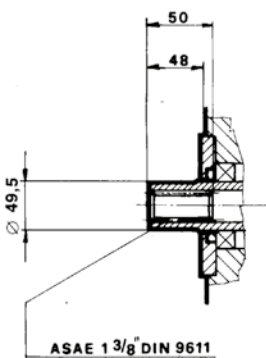
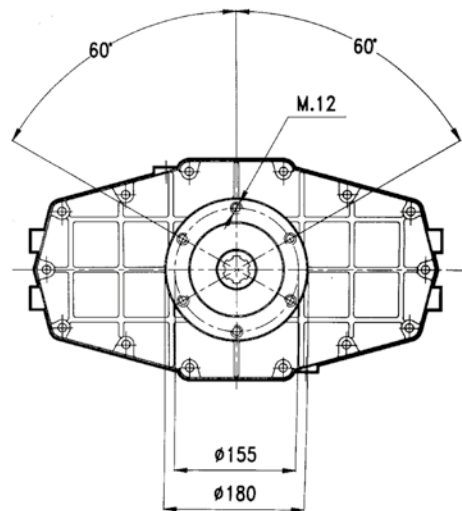
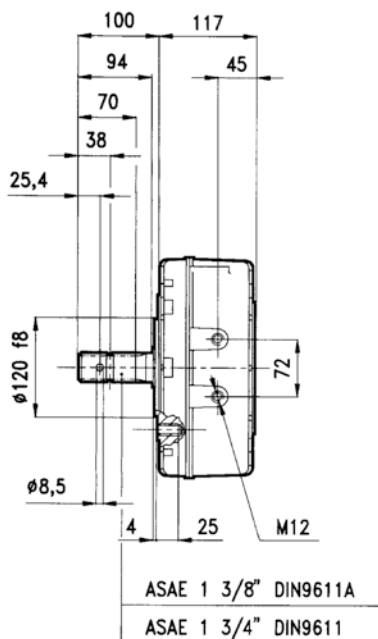
SERIE: 91000



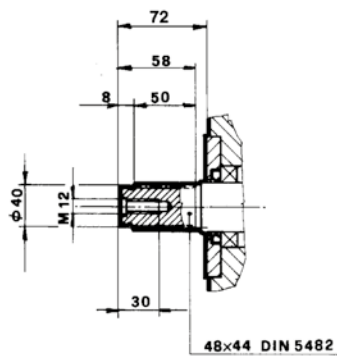
POS.	DENOMINAZIONE	DENOMINATION	DESCRIPTION	BEZEICHNUNG	Q.TA'
1	Coperchio	Couvercle	Cover	Deckel	1
2	Vite V.T.C.E.I	Vis V.T.C.E.I	Socket capscrew	Zylinderkopfschraube mit Innens.	14
3	Spina	Goupille	Peg	Stift durchm	2
4	Anello di tenuta	Bague d'Étancheité	Sealing ring	Dichtring, Durchm.	1
5	Cuscinetto 6210	Palier 6210	Bearing 6210	Kugellager 6210	4
6	Anello seeger UNI 7435 - 58	Circlip UNI 7435 - 58	Snap ring UNI 7435 - 58	Seegerring UNI 7435 - 58	2
7	Albero presa di forza maschio 1"3/8 Z6	Arbre prise de force mâle 1"3/8 Z6	Female P.T.O. shaft 1"3/8 Z6	Antriebswelle mit Innenverkeilung 1"3/8 Z6	1
8	Pignone	Pignon	Pinion gear	Ritzel	2
9	Cuscinetto tipo 6012	Palier 6012	Bearing 6012	Kugellager Type 6012	2
10	Corona	Couronne	Ring gear	Zahnkranz	1
11	Guarnizione	Joint	Gasket	Dichtung	2
12	Tappo sfiato olio 3/8" con asta livello	Bouchon reniflard huile 3/8" , avec tige nivel oil	Oil breather plug 3/8", whit pole level oil	Entlüftungsschraube 3/8"	1
13	Guarnizione	Joint	Gasket	Dichtung	1
14	Scatola	Carcasse	Housing	Gehäuse	1
15	Tappo scarico olio 3/8"	Bouchon vindage huile 3/8"	Oil drain plug 3/8"	Olablabschraube 3/8"	1
16	Guarnizione	Joint	Gasket	Dichtung	1
17	Flangia	Bride	Flange	Flansch .	1
18	Vite V.T.C.E.I	Vis V.T.C.E.I	Socket capscrew	Zylinderkopfschraube mit Innens.	4
19	Anello di tenuta	Bague d'Étancheité	Sealing ring	Dichtring, Durchm.	1

SERIE: 91000

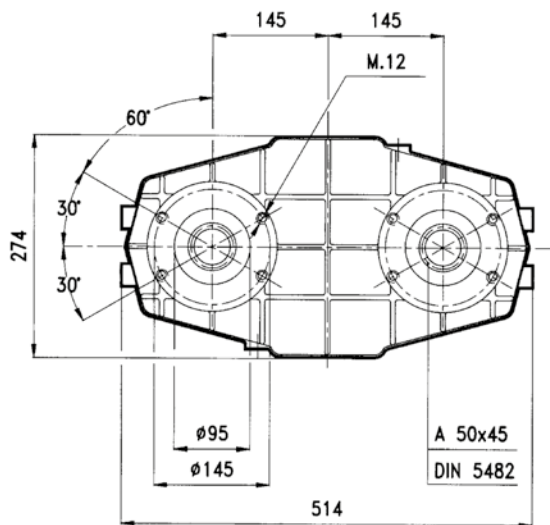
91001



91002



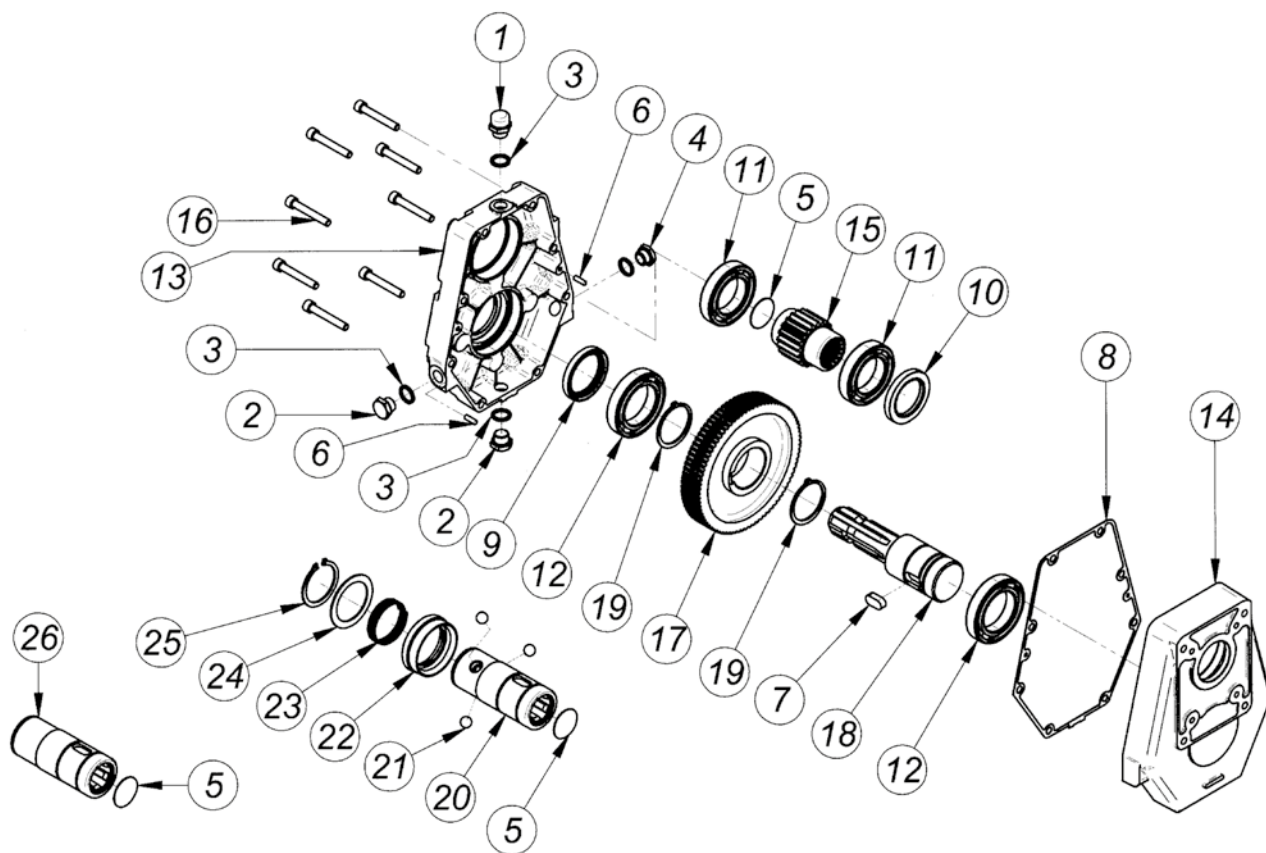
91003



Объем масла, л. 1,80

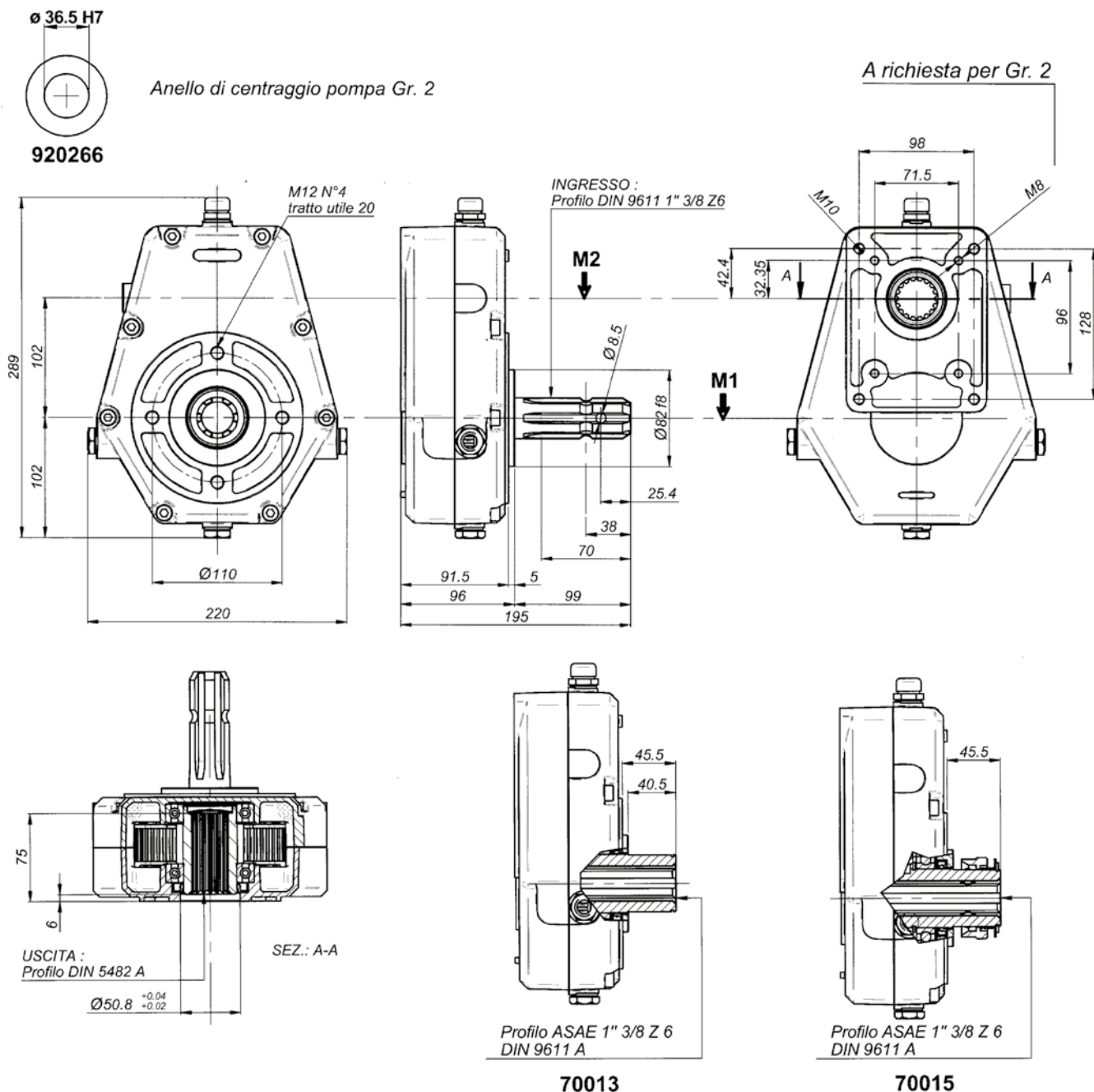
M1 da Nm	M2 da Nm	N. 1 Об/мин	N. 2 Об/мин	I N.1/N.2	МОЩНОСТЬ Kw	G Kg
132	66	540	540	1	74	20
163	39	540	1080	2	74	20
174	31	540	1350	2,5	74	20
177	27	540	1620	3	74	20
158	20	540	2030	3,8	74	20

SERIE: 70012



Pos.	DENOMINAZIONE	DENOMINATION	DESCRIPTION	BEZEICHNUNG	Q.TA'
1	Tappo sfiato olio 3/8"	Bouchon reniflard huile 3/8"	Oil breather plug 3/8"	Olablabschraube 3/8"	1
2	Tappo scarico olio 3/8"	Bouchon vindage huile 3/8"	Oil drain plug 3/8"	Olablabschraube 3/8"	2
3	Guarnizione	Jiont	Gasket	Dichtung	4
4	Tappo livello olio 3/8"	Bouchon niveau huile 3/8"	Oil drain plug 3/8"	Olstandschrabe 3/8"	1
5	Coperchietto DIN 470 D.37	Petit couvercle D.37 DIN 470	Cap DIN 470 D.37	Deckel DIN 470 , D.37	1
6	Spina UNI 8735 5x20	Goupille UNI 8735 D.5x20	Peg UNI 8735 5x20	Stift durchm UNI 8735 5x20	2
7	Chiavetta 12x25	Clavette 12x25	Key 12x25	Keil 12x25	1
8	Guarnizione	Jiont	Gasket	Dichtung	1
9	Anello di tenuta 50x65x8	Bague d'ÉtanchÉitÉ 50x65x8	Sealing ring 50x65x8	Dichtring, Durchm. 50x65x8	1
10	Anello di tenuta 45x65x8	Bague d'Étancheite 45x65c8	Sealing ring 45x65x8	Dichtring, Durchm. 45x65x8	1
11	Cuscinetto 6009	Palier 6009	Bearing 6009	Kugellager Type 6009	2
12	Cuscinetto tipo 6010	Palier 6010	Bearing 6010	Kugellager Type 6010	2
13	Scatola in ghisa	Carcasse en fonte	Housing cats iron	Gehäuse gubeisen	1
14	Coperchio	Couvercle	Cover	Deckel	1
15	Pignone	Pignon	Pinion gear	Ritzel	1
16	Vite T.C.E.I. M8x55	Vis T.C.H.C M8x55	Socket capscrew M8x55	Zylinderkopfschraube mit Innensechskant M8x55	8
17	Corona	Couronne	Ring gear	Zahnkranz	1
18	Albero presa di forza maschio 1 3/8 Z6	Arbre price de force mle 1 3/8 Z6	Female P.T.O. shaft 1 3/8 Z6	Antriebswelle mit Innenverkeilung 1 3/8 Z6	1
19	Anello seeger d.50	Circlip d.50	Snap ring d.50	Seegerring, Durchm. 50	2
20	Albero presa di forza femmina 1 3/8 Z6 attacco rapido	Arbre prise de force femelle 1 3/8 Z6 attelage rapide	Female P.T.O. shaft 1 3/8 Z6, Quick fitting	Antriebsw.m. Innenverkeilung 1 3/8 Z6 , mit Schnellkupplung	1
21	Sfera	Bille	Ball	Kugel	3
22	Anello porta molla	Bague porte-ressot	Spring ring	Federhaltering	1
23	Molla	Ressort	Spring	Feder	1
24	Anello	Bague	Ring	Ring	1
25	Anello seeger UNI 7435 - 50	Circlip UNI 7435 - 50	Snap ring UNI 7435 - 50	Seegerring UNI 7435 - 50	1
26	Albero presa di forza femmina lunga 1 3/8 Z6	Arbre prise de force femelle long 1 3/8 Z6	Female P.T.O. shaft 1 3/8 Z6 long	Antriebsw.m. Innenverkeilung 1 3/8 Z6 , lang	1

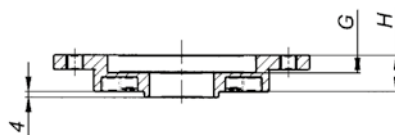
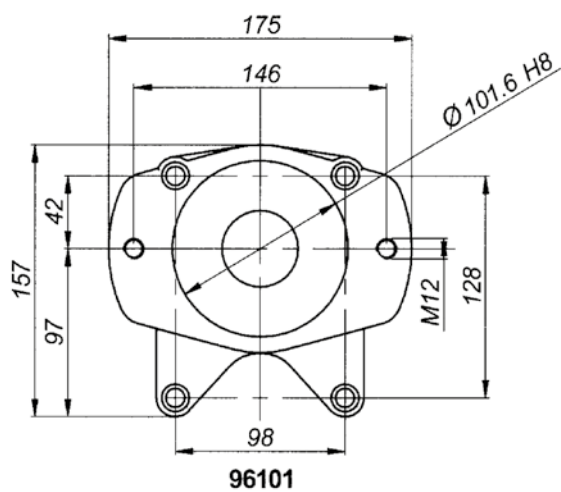
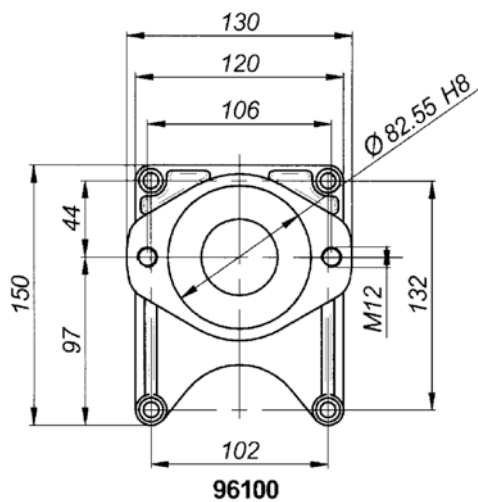
SERIE: 70012



Объем масла, л. 0,520

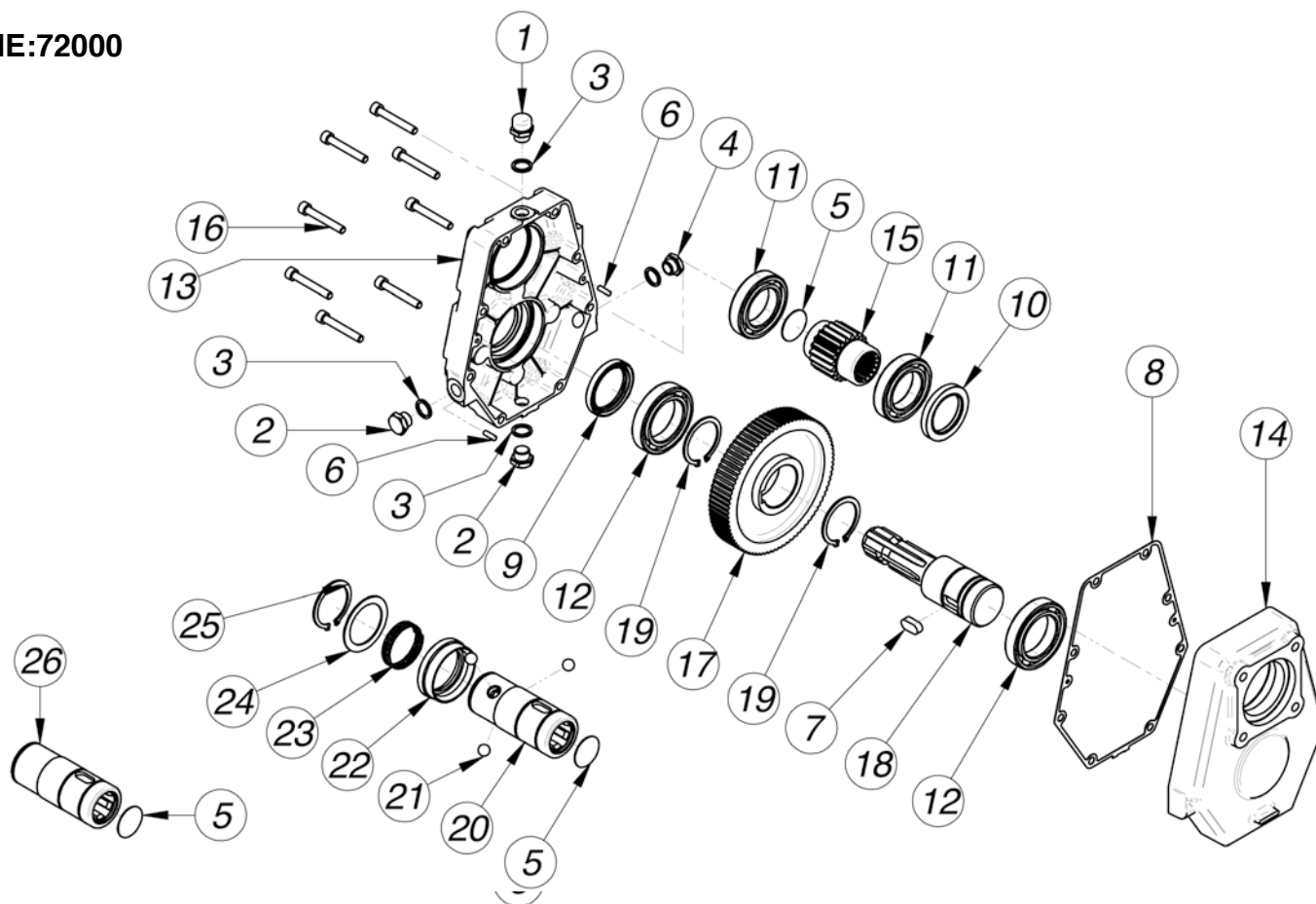
M1 da Nm	M2 da Nm	N. 1 giri/ 1' tours/ 1' R.P.M Об/мин	N. 2 giri/ 1' tours/ 1' R.P.M Об/мин	I N.1/N.2	МОЩНОСТЬ Kw	G Kg
66	66	540	540	1	37	14,5
66	44	540	810	1,5	37	14,5
66	33	540	1080	2	37	14,5
66	26,4	540	1408	2,5	37	14,5
66	22	540	1620	3	37	14,5
66	18	540	1836	3,5	37	14,5
66	16,6	540	2057	3,8	37	14,5

• АДАПТЕРЫ ДЛЯ МУЛЬТИПЛИКАТОРОВ СЕРИИ: 70012



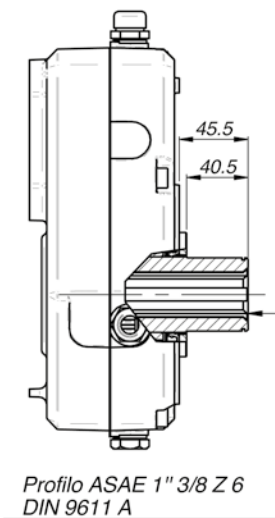
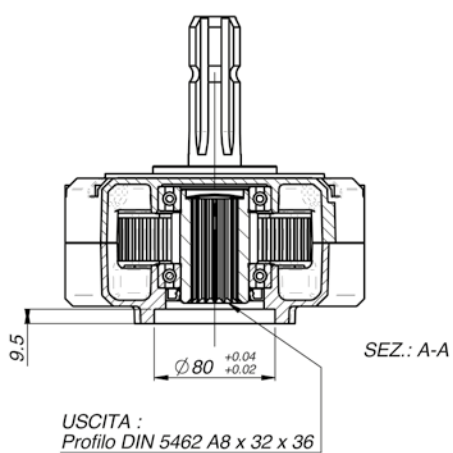
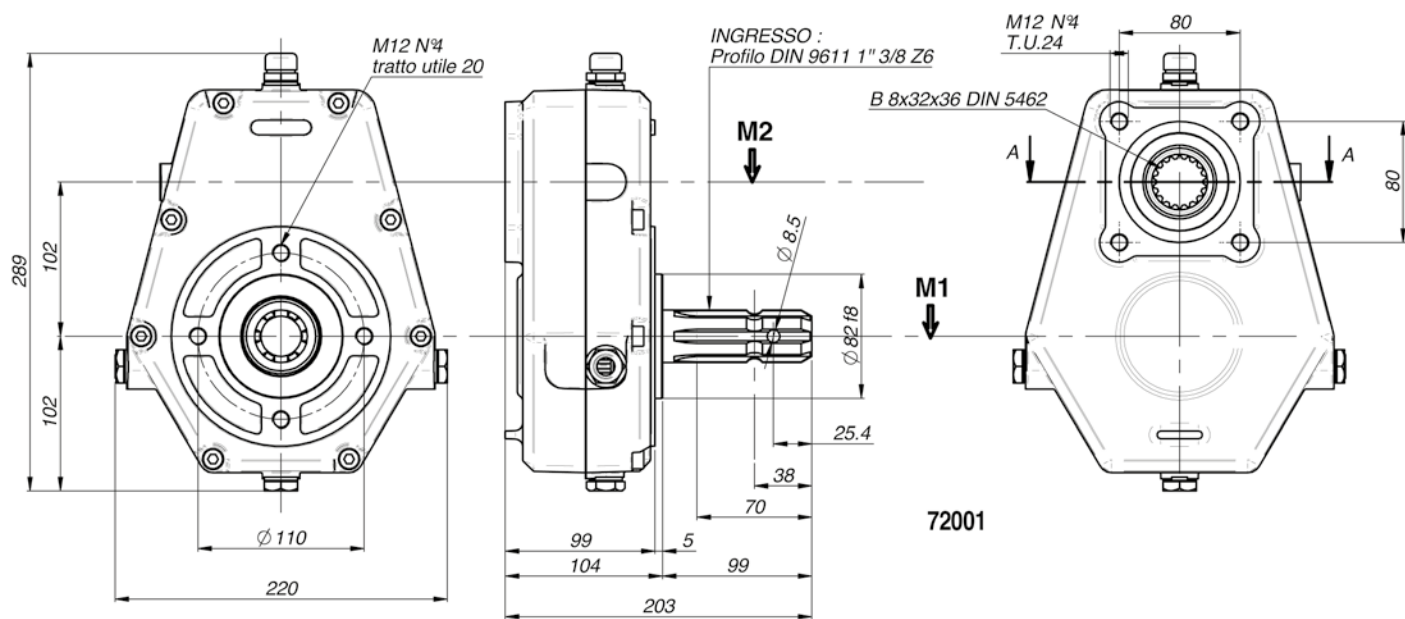
	FLANGIA: TIPO, BRIDE: TYPE FLANGE: TYPE, FLANSCHTYPE	
	SAE A Gr. 3	SAE B Gr. 3
Code	96100	96101
G	10	12
H	16	24

SERIE:72000

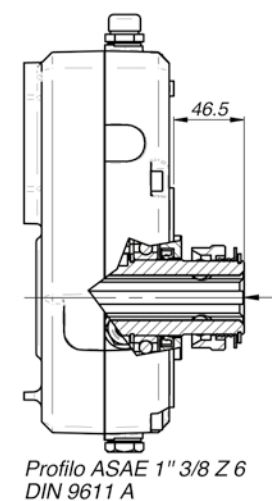


Pos.	DENOMINAZIONE	DENOMINATION	DESCRIPTION	BEZEICHNUNG	Q.TA'
1	Tappo sfiato olio 3/8"	Bouchon reniflard huile 3/8"	Oil breather plug 3/8"	Olablabschraube 3/8"	1
2	Tappo scarico olio 3/8"	Bouchon vindage huile 3/8"	Oil drain plug 3/8"	Olablabschraube 3/8"	2
3	Guarnizione	Jiont	Gasket	Dichtung	4
4	Tappo livello olio 3/8"	Bouchon niveau huile 3/8"	Oil drain plug 3/8"	Olstandschraube 3/8"	1
5	Coperchietto DIN 470 D.37	Petit couvercle D.37 DIN 470	Cap DIN 470 D.37	Deckel DIN 470 , D.37	1
6	Spina UNI 8735 5x20	Goupille UNI 8735 D.5x20	Peg UNI 8735 5x20	Stift durchm UNI 8735 5x20	2
7	Chiavetta 12x25	Clavette 12x25	Key 12x25	Keil 12x25	1
8	Guarnizione	Jiont	Gasket	Dichtung	1
9	Anello di tenuta 50x65x8	Bague d'étanchéité 50x65x8	Sealing ring 50x65x8	Dichtring, Durchm. 50x65x8	1
10	Anello di tenuta 45x65x8	Bague d'étancheite 45x65c8	Sealing ring 45x65x8	Dichtring, Durchm. 45x65x8	1
11	Cuscinetto tipo 6009	Palier 6009	Bearing 6009	Kugellager Type 6009	2
12	Cuscinetto tipo 6010	Palier 6010	Bearing 6010	Kugellager Type 6010	2
13	Scatola in ghisa	Carcasse en fonte	Housing cats iron	Gehause gubeisen	1
14	Coperchio	Couvercle	Cover	Deckel	1
15	Pignone	Pignon	Pinion gear	Ritzel	1
16	Vite T.C.E.I. M8x55	Vis T.C.H.C M8x55	Socket capscrew M8x55	Zylinderkopfschraube mit Innensechskant M8x55	8
17	Corona	Couronne	Ring gear	Zahnkranz	1
18	Albero presa di forza maschio 1 3/8" Z6	Arbre prise de force mâle 1 3/8" Z6	Female P.T.O. shaft 1 3/8" Z6	Antriebswelle mit Innenverkeilung 1 3/8" Z6	1
19	Anello seeger UNI 7435 - 50	Circlip UNI 7435 - 50	Snap ring UNI 7435 - 50	Seegerring UNI 7435 - 50	2
20	Albero presa di forza femmina 1 3/8" Z6 attacco rapido	Arbre prise de force femelle 1 3/8" Z6 attelage rapide	Female P.T.O. shaft 1 3/8" Z6, Quick fitting	Antriebsw.m. Innenverkeilung 1 3/8" Z6 , mit Schnellkupplung	1
21	Sfera d.13	Bille d.13	Ball d.13	Kugel Durchm 13	1
22	Anello porta molla	Bague porte-ressot	Spring ring	Federhltering	1
23	Molla	Ressot	Spring	Feder	1
24	Anello	Bague	Ring	Ring	1
25	Anello seeger UNI 7435 - 50	Circlip UNI 7435 - 50	Snap ring UNI 7435 - 50	Seegerring UNI 7435 - 50	1
26	Albero presa di forza femmina lunga 1 3/8" Z6	Arbre prise de force femelle long 1 3/8" Z6	Female P.T.O. shaft 1 3/8" Z6 long	Antriebsw.m. Innenverkeilung 1 3/8" Z6 , lang	1

SERIE:72000



72002

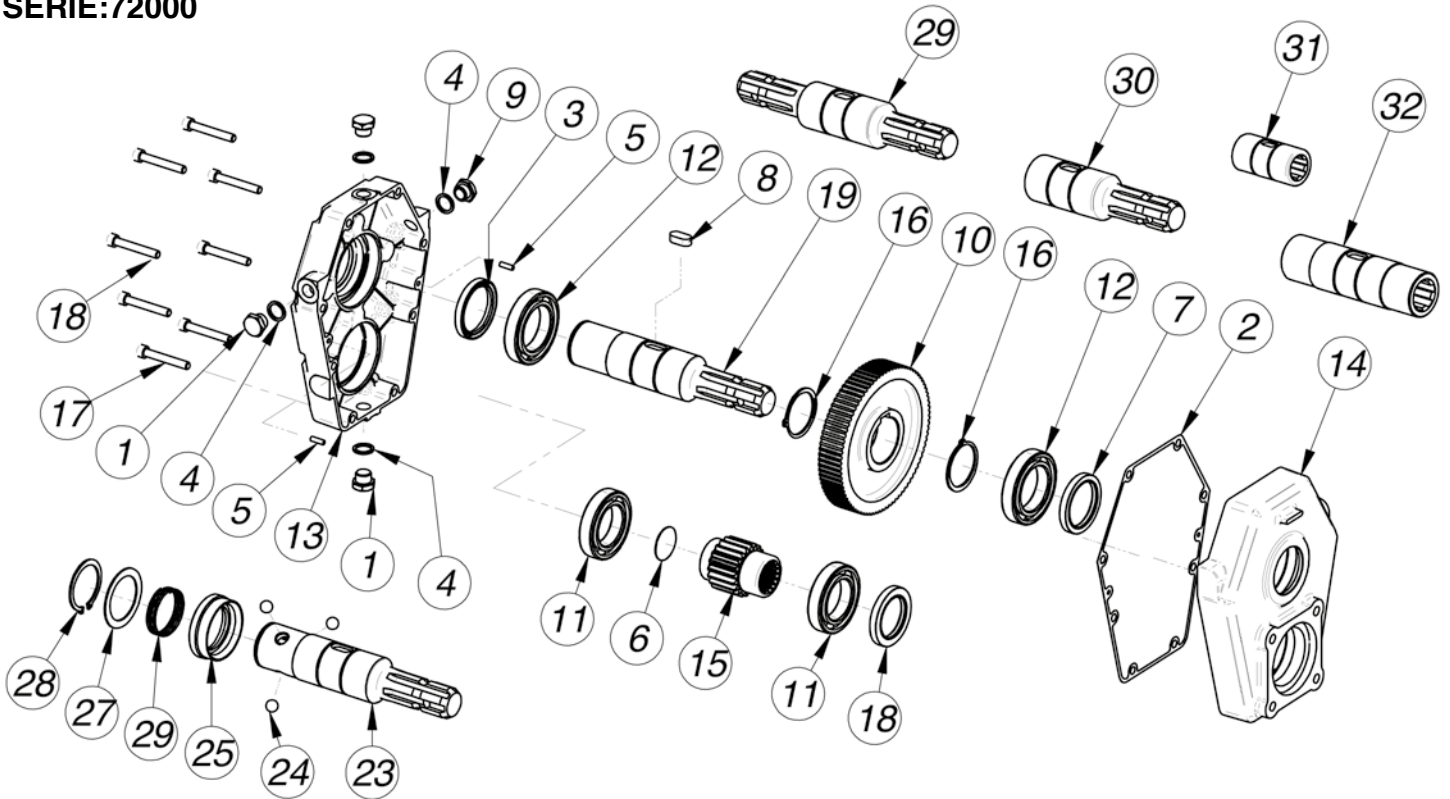


72003

Объем масла, л. 0,520

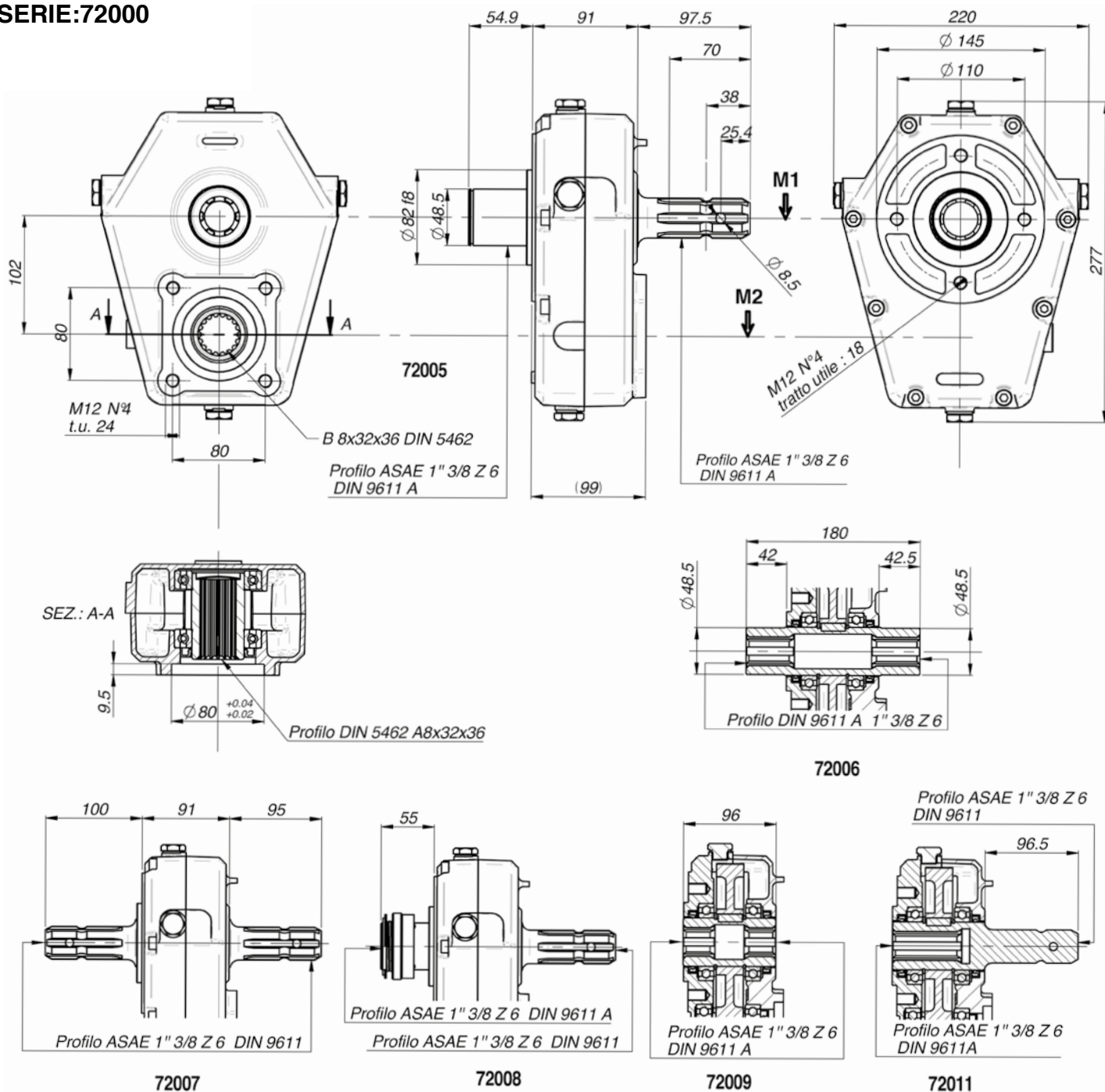
M1 da Nm	M2 da Nm	N. 1 Об/мин	N. 2 Об/мин	I N.1/N.2	МОЩНОСТЬ Kw	G Kg
66	66	540	540	1	37	14,5
66	44	540	810	1,5	37	14,5
66	33	540	1080	2	37	14,5
66	26,4	540	1408	2,5	37	14,5
66	22	540	1620	3	37	14,5
66	18	540	1836	3,5	37	14,5
66	16,6	540	2057	3,8	37	14,5

SERIE:72000



Pos.	DENOMINAZIONE	DENOMINATION	DESCRIPTION	BEZEICHNUNG	Q.TA'
1	Tappo scarico olio 3/8"	Bouchon vindage huile 3/8"	Oil drain plug 3/8"	Olablabschraube 3/8"	3
2	Guarnizione	Joint	Gasket	Dichtung	1
3	Anello di tenuta 50x65x8	Bague d'étanchéité 50x65x8	Sealing ring 50x65x8	Dichtring, Durchm. 50x65x8	1
4	Guarnizione	Jiont	Gasket	Dichtung	4
5	Spina UNI 8751 5x16	Goupille UNI 8751 D.5x16	Peg UNI 8751 5x16	Stift durchm UNI 8751 5x16	2
6	Coperchietto DIN 470 D.37	Petit couvercle D.37 DIN 470	Cap DIN 470 D.37	Deckel DIN 470 , D.37	1
7	Anello di tenuta 50x65x8	Bague d'étanchéité 50x65x8	Sealing ring 50x65x8	Dichtring, Durchm. 50x65x8	1
8	Chiavetta 12x25	Clavette 12x25	Key 12x25	Keil 12x25	1
9	Tappo livello olio 3/8"	Bouchon niveau huile 3/8"	Oil drain plug 3/8"	Olstandschrabe 3/8"	1
10	Corona	Couronne	Ring gear	Zahnkranz	1
11	Cuscinetto tipo 6009	Palier 6009	Bearing 6009	Kugellager Type 6009	2
12	Cuscinetto tipo 6010	Palier 6010	Bearing 6010	Kugellager Type 6010	2
13	Scatola in ghisa	Carcasse en fonte	Housing cats iron	Gehause gubeisen	1
14	Coperchio	Couvercle	Cover	Deckel	1
15	Pignone	Pignon	Pinion gear	Ritzel	1
16	Anello seeger d.50	Circlip d.50	Snap ring d.50	Seegerring, Durchm. 50	2
17	Vite T.C.E.I. M8x55	Vis T.C.H.C M8x55	Socket capscrew M8x55	Zylinderkopfschraube mit Innensechskant M8x55	8
18	Anello di tenuta 45x65x8	Bague d'étancheité 45x65x8	Sealing ring 45x65x8	Dichtring, Durchm. 45x65x8	1
19	Albero presa di forza femmina-maschio 1" 3/8" Z6	Arbre prise de force femelle-Male 1"3/8" Z6	Female-Male P.T.O. shaft 1"3/8" Z6	Antriebsw.m. Innenverkeilung-Aussenverkeilung 1" 3/8" Z6	1
23	Albero presa di forza maschio-attacco rapido 1" 3/8" Z6	Arbre prise de force Male-attelage rapide 1"3/8" Z6	Male P.T.O. -Quick fitting shaft 1"3/8" Z6	Antriebsw.m. Innenverkeilung , mit schnellkupplung 1" 3/8" Z6	1
24	Sfera d.13	Bille d.13	Ball d.13	Kugel Durchm 13	1
25	Anello porta molla	Bague porte-ressot	Spring ring	Federhiltering	1
27	Anello	Bague	Ring	Ring	1
28	Anello seeger UNI 7435 - 50	Circlip UNI 7435 - 50	Snap ring UNI 7435 - 50	Seegerring UNI 7435 - 50	1
29	Molla	Ressot	Spring	Feder	1
29	Albero presa di forza maschio-maschio 1" 3/8" Z6	Arbre prise de force Male-Male 1"3/8" Z6	Male-Male P.T.O. shaft 1"3/8" Z6	Antriebsw.m. Aussenverkeilung-Aussenverkeilung 1" 3/8" Z6	1
30	Albero presa di forza femmina-maschio 1" 3/8" Z6 corta	Arbre prise de force femelle-Male 1"3/8" Z6 court	Female-Male P.T.O. shaft 1"3/8" Z6 schort	Antriebsw.m. Innenverkeilung-Aussenverkeilung 1" 3/8" Z6 kurz	1
31	Albero presa di forza femmina corta 1" 3/8" Z6	Arbre prise de force femelle court 1"3/8" Z6	Female P.T.O. shaft 1"3/8" Z6 schort	Antriebsw.m. Innenverkeilung 1" 3/8" Z6 kurz	1
32	Albero presa di forza femmina 1" 3/8" Z6	Arbre prise de force femelle 1"3/8" Z6	Female P.T.O. shaft 1"3/8" Z6	Antriebsw.m. Innenverkeilung 1" 3/8" Z6	1

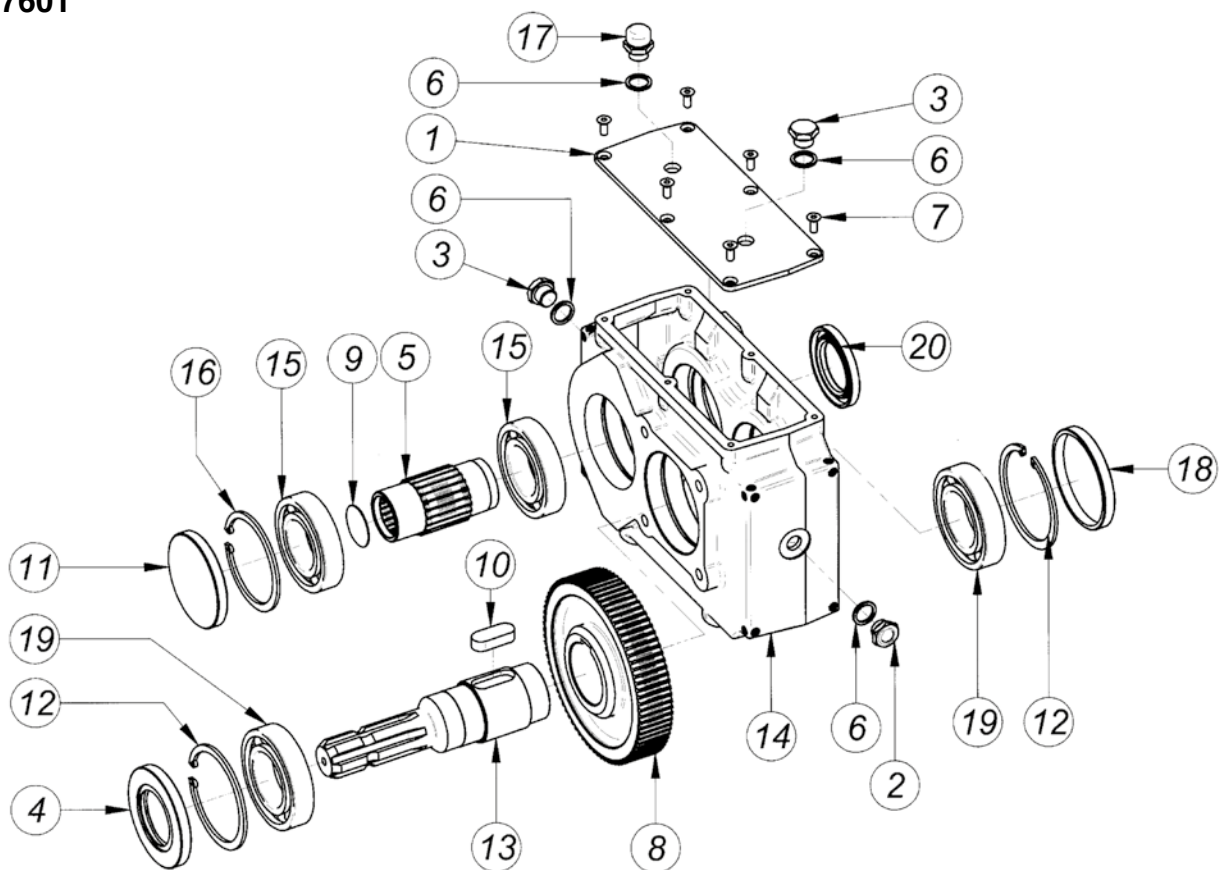
SERIE:72000



Объем масла, л. 0,350

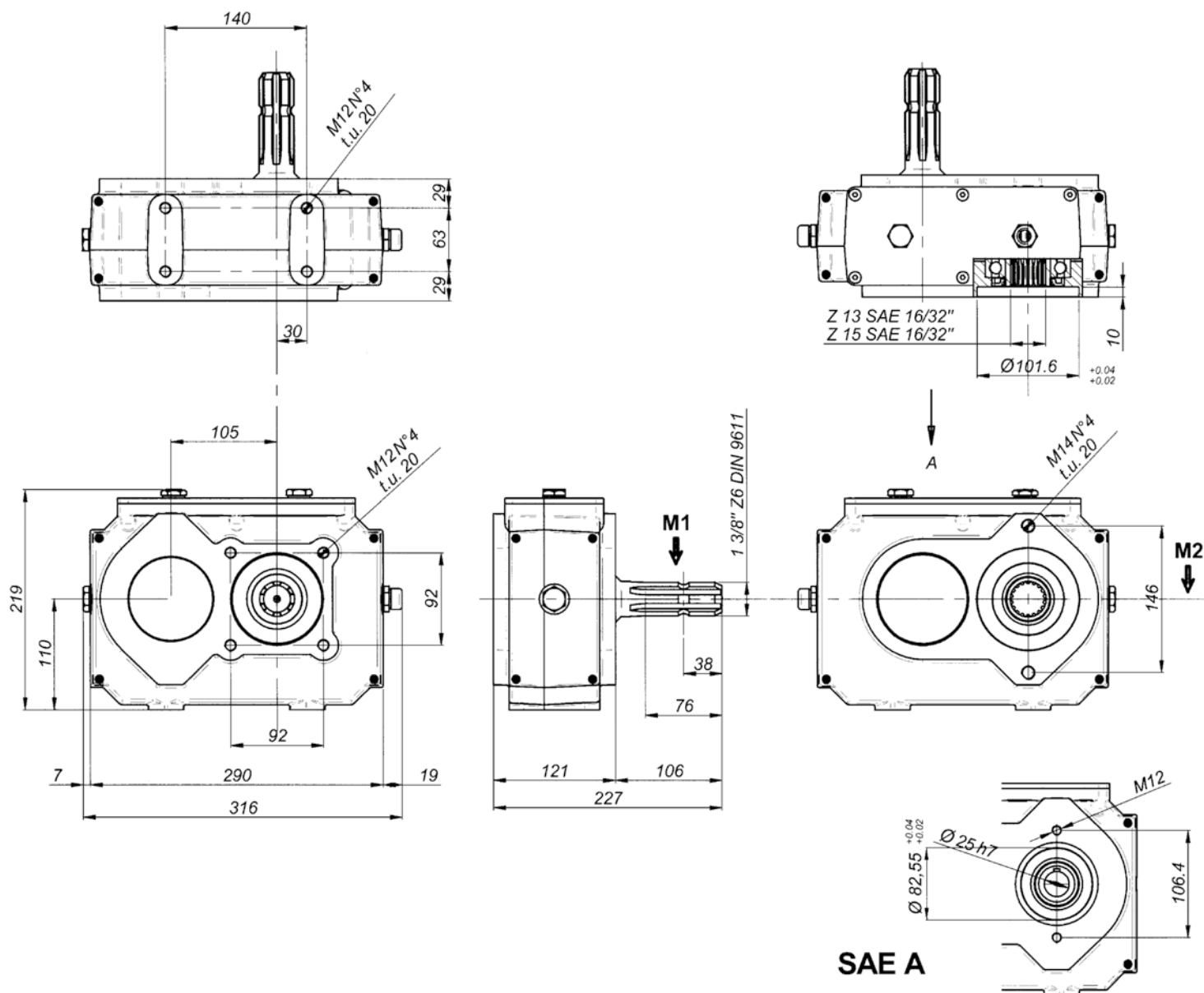
M1 da Nm	M2 da Nm	N. 1 Об/мин	N. 2 Об/мин	I N.1/N.2	МОЩНОСТЬ Kw	G Kg
31	31	540	540	1	37	15,5
38	26	540	810	1,5	37	15,5
43	21	540	1080	2	37	15,5
46	18	540	1408	2,5	37	15,5
49	16	540	1620	3	37	15,5
46	13	540	1836	3,5	37	15,5
43,7	11,5	540	2057	3,8	37	15,5

SERIE: 97601



Pos.	DENOMINAZIONE	DENOMINATION	DESCRIPTION	BEZEICHNUNG	Q.TA'
1	Coperchio	Couvercle	Cover	Deckel	1
2	Tappo livello olio 3/8"	Bouchon niveau huile 3/8"	Oil drain plug 3/8"	Olstandschraube 3/8"	1
3	Tappo scarico olio 3/8"	Bouchon vindage huile 3/8"	Oil drain plug 3/8"	Olablabschraube 3/8"	2
4	Anello di tenuta 50x90x10	Bague d'etancheite 50x90x10	Sealing ring 50x90x10	Dichtring 50x90x10	1
5	Pignone	Pignon	Pinion gear	Ritzel	1
6	Guarnizione	Joint	Gasket	Dichtung	4
7	Vite UNI 5933 M6x15	Vis UNI 5933 M6x15	Socket UNI 5933 M6x15	Schraube UNI 5933 M6x15	6
8	Corona	Couronne	Ring gear	Zahnkranz	1
9	Coperchietto DIN 470 D.37	Petit couvercle D.37 DIN 470	Cap DIN 470 D.37	Deckel DIN 470 , D.37	1
10	Linguetta UNI 6604 12x8x40	Clavette UNI 6604 12x8x40	Key UNI 6604 12x8x40	Keil UNI 6604 12x8x40	1
11	Tappo 85x10	Bouchon 85x10	Plug 85x10	Deckel 85x10	1
12	Seeger UNI 7434 - 90	Circlip UNI 7434 - 90	Snap ring UNI 7434 - 90	Seegerring Durchm UNI 7434 - 90	2
13	Albero presa di forza maschio 1 3/8"	Arbre prise de force m♂le 1 3/8 "	Male P.T.O. shaft 1 3/8"	Antriebwelle mit Aussenverkeilung 1 3/8"	1
14	Scatola	Carcasse	Housing	Gehause	1
15	Cuscinetto 6209 (45-85-19)	Palier 6209 (45-85-19)	Bearing 6209 (45-85-19)	Kugellager 6209 (45-85-19)	2
16	Seeger UNI 7434 - 85	Circlip UNI 7434 - 85	Seeger UNI 7434 - 85	Seegerring UNI 7434 - 85	1
17	Tappo sfiato olio 3/8"	Bouchon reniflard huile 3/8"	Oil breather plug 3/8"	Olablabschraube 3/8"	1
18	Tappo 90x10	Bouchon 90x10	Plug 90x10	Deckel 90x10	1
19	Cuscinetto tipo 6210	Pallier 6210	Bearing 6210	Kugellager tipo 6210	2
20	Anello di tenuta 45x72x8	Bague d'Étancheite 45x72x8	Sealing ring 45x72x8	Dichtring, Durchm 45x72x8	1

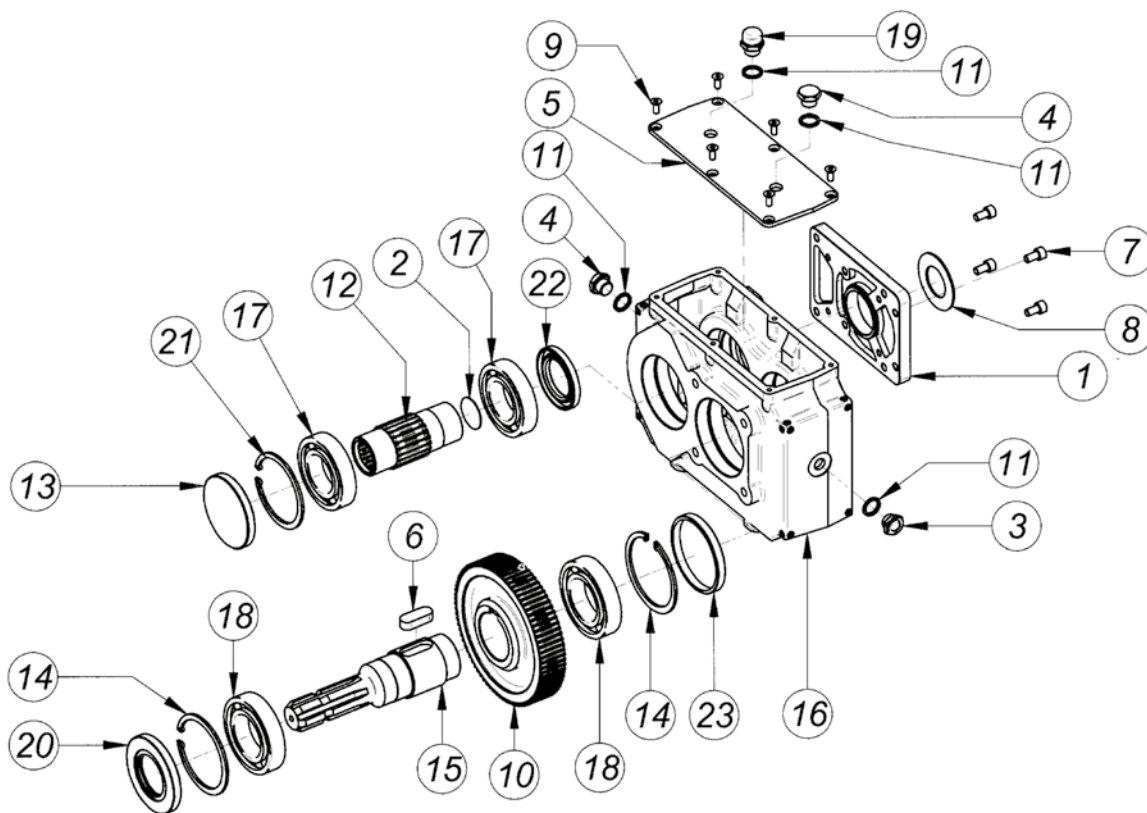
SERIE: 97601



Объем масла, л. 1,50

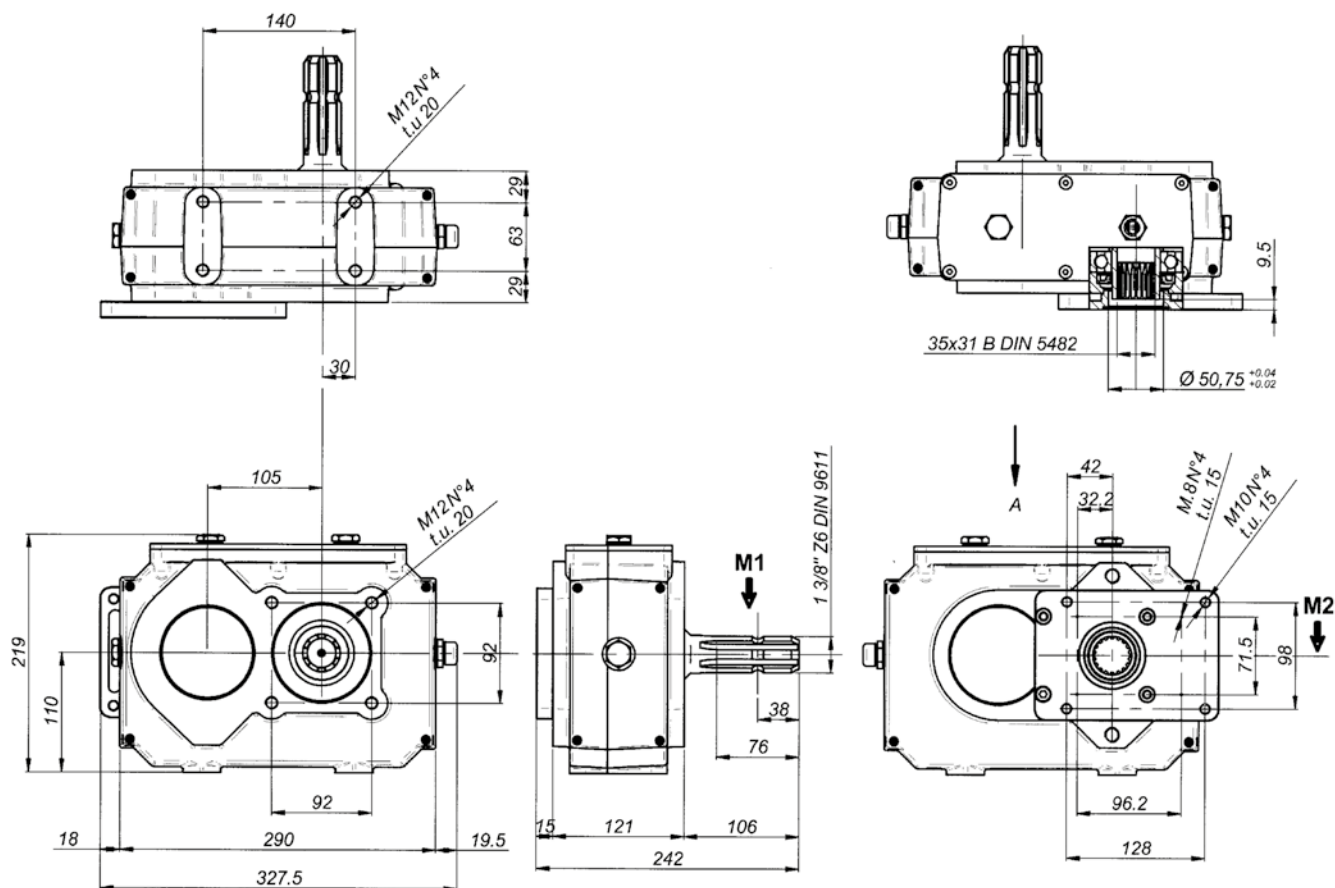
M1 da Nm	M2 da Nm	N. 1 Об/мин	N. 2 г Об/мин	I N.1/N.2	МОЩНОСТЬ Kw	G Kg
98	49	540	1080	2	68	16
112,5	45	540	1408	2,5	68	16
132	44	540	1620	3	68	16
112,5	35	540	1836	3,5	68	16
110,2	29	540	2057	3,8	68	16

SERIE: 97701



Pos.	DENOMINAZIONE	DENOMINATION	DESCRIPTION	BEZEICHNUNG	Q.TA'
1	Flangia per pompe Gr 2 - 3	Bride pour pompe Gr 2-3	Flange fur pump group 2 and 3	Flansch fur Pumpen Gr 2-3	1
2	Coperchietto DIN 470 D.37	Petit couvercle D.37 DIN 470	Cap DIN 470 D.37	Deckel DIN 470 , D.37	1
3	Tappo livello olio 3/8"	Bouchon niveau huile 3/8"	Oil drain plug 3/8"	Olstandschraube 3/8"	1
4	Tappo scarico olio 3/8"	Bouchon vindage huile 3/8"	Oil drain plug 3/8"	Olablabschraube 3/8"	2
5	Coperchio	Couvercle	Cover	Deckel	1
6	Linguetta UNI 6604 12x8x40	Clavette UNI 6604 12x8x40	Key UNI 6604 12x8x40	Keil UNI 6604 12x8x40	1
7	Vite T.C.E.I. M8x15	Vis T.C.H.C M8x15	Socket capscrew M8x15	Zylinderkopfschraube mit Innensechskant M8x15	4
8	Anello di centraggio per pompa Gr. 2	Bague de centrage pour pompe Gr.2	Centering ring for pump group 2	Zentrierring fur pompe Gr 2	1
9	Vite UNI 5933 M6x15	Vis UNI 5933 M6x15	Socket UNI 5933 M6x15	Schraube UNI 5933 M6x15	6
10	Corona	Couronne	Ring gear	Zahnkranz	1
11	Guarnizione	Joint	Gasket	Dichtung	4
12	Pignone	Pignon	Pinion gear	Ritzel	1
13	Tappo 85x10	Bouchon 85x10	Plug 85x10	Deckel 85x10	1
14	Seeger UNI 7434 - 90	Circlip UNI 7434 - 90	Snap ring UNI 7434 - 90	Seegerring Durchm UNI 7434 - 90	2
15	Albero presa di forza maschio 1 3/8"	Arbre prise de force m♂le 1 3/8 "	Male P.T.O. shaft 1 3/8"	Antriebwelle mit Aussenverkeilung 1 3/8"	1
16	Scatola	Carcasse	Housing	Gehause	1
17	Cuscinetto 6209 (45-85-19)	Palier 6209 (45-85-19)	Bearing 6209 (45-85-19)	Kugellager 6209 (45-85-19)	2
18	Cuscinetto tipo 6210	Pallier 6210	Bearing 6210	Kugellager tipo 6210	2
19	Tappo sfiato olio 3/8"	Bouchon reniflard huile 3/8"	Oil breather plug 3/8"	Olablabschraube 3/8"	1
20	Anello di tenuta 50x90x10	Bague d'etancheite 50x90x10	Sealing ring 50x90x10	Dichtring 50x90x10	1
21	Seeger UNI 7434 - 85	Circlip UNI 7434 - 85	Seeger UNI 7434 - 85	Seegerring UNI 7434 - 85	1
22	Anello di tenuta 45x72x8	Bague d'Étancheite 45x72x8	Sealing ring 45x72x8	Dichtring, Durchm 45x72x8	1
23	Tappo 90x10	Bouchon 90x10	Plug 90x10	Deckel 90x10	1

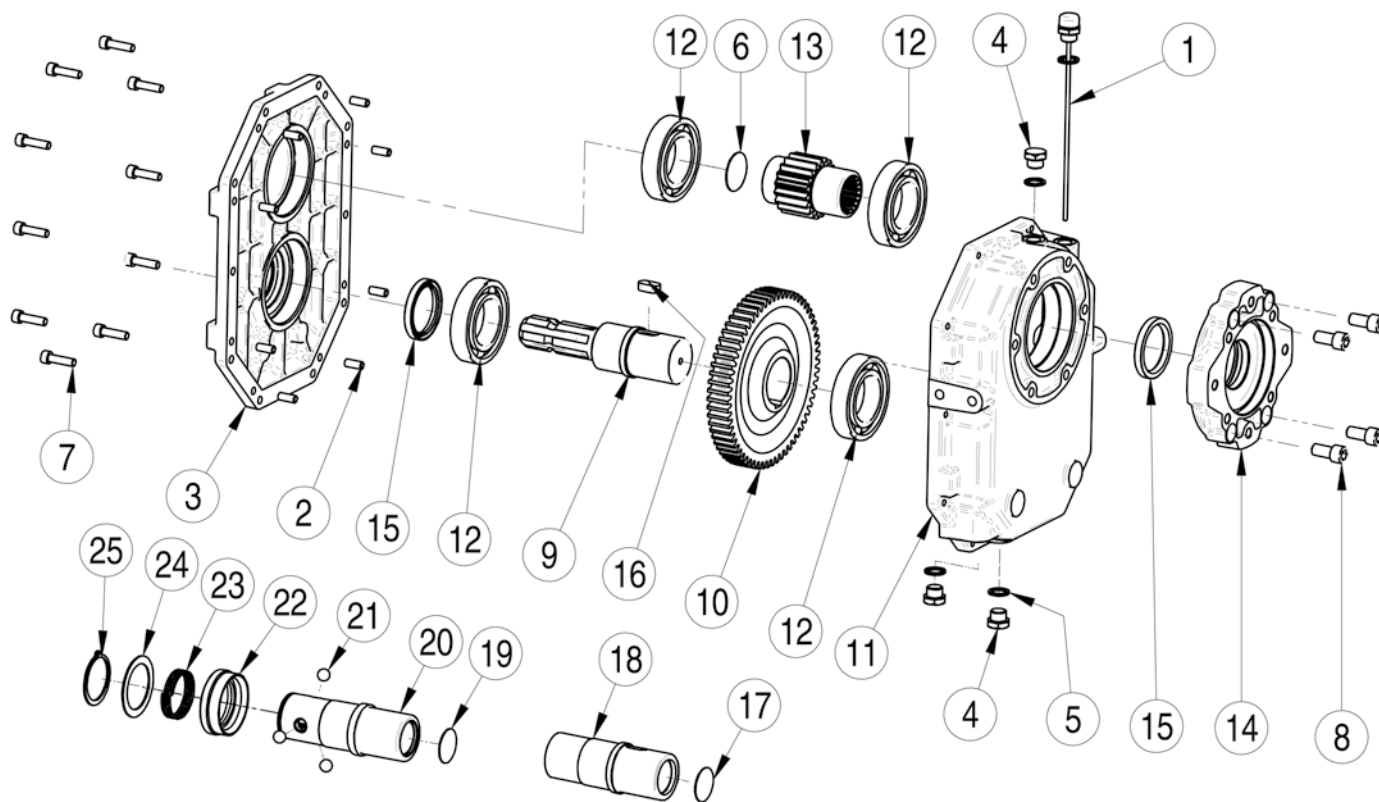
SERIE: 97701



Объем масла, л. 1,50

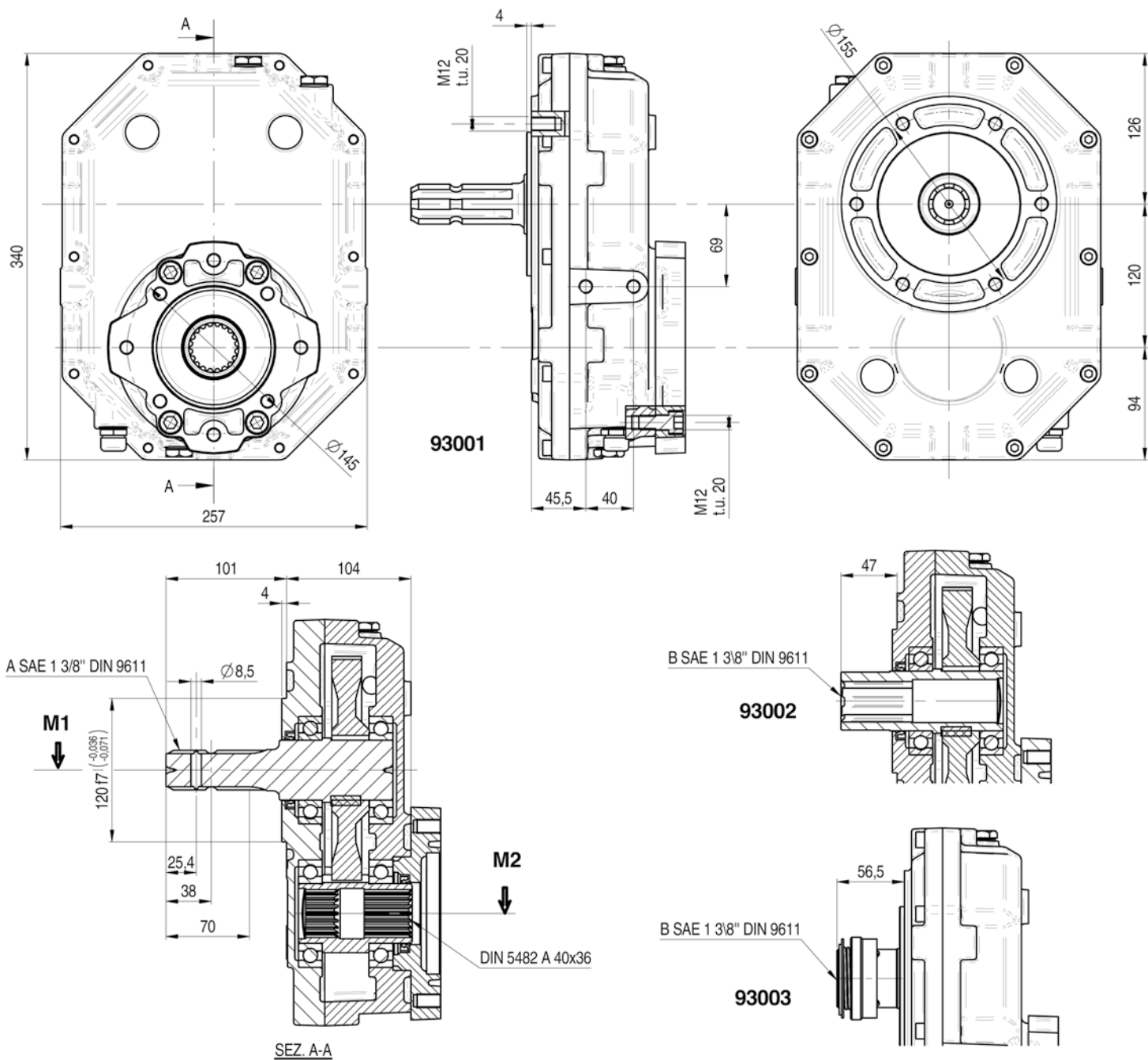
M1 da Nm	M2 da Nm	N. 1 Об/мин	N. 2 Об/мин	I N.1/N.2	МОЩНОСТЬ Kw	G Kg
98	49	540	1080	2	68	16
112,5	45	540	1408	2,5	68	16
132	44	540	1620	3	68	16
112,5	35	540	1836	3,5	68	16
110,2	29	540	2057	3,8	68	16

SERIE: 93000

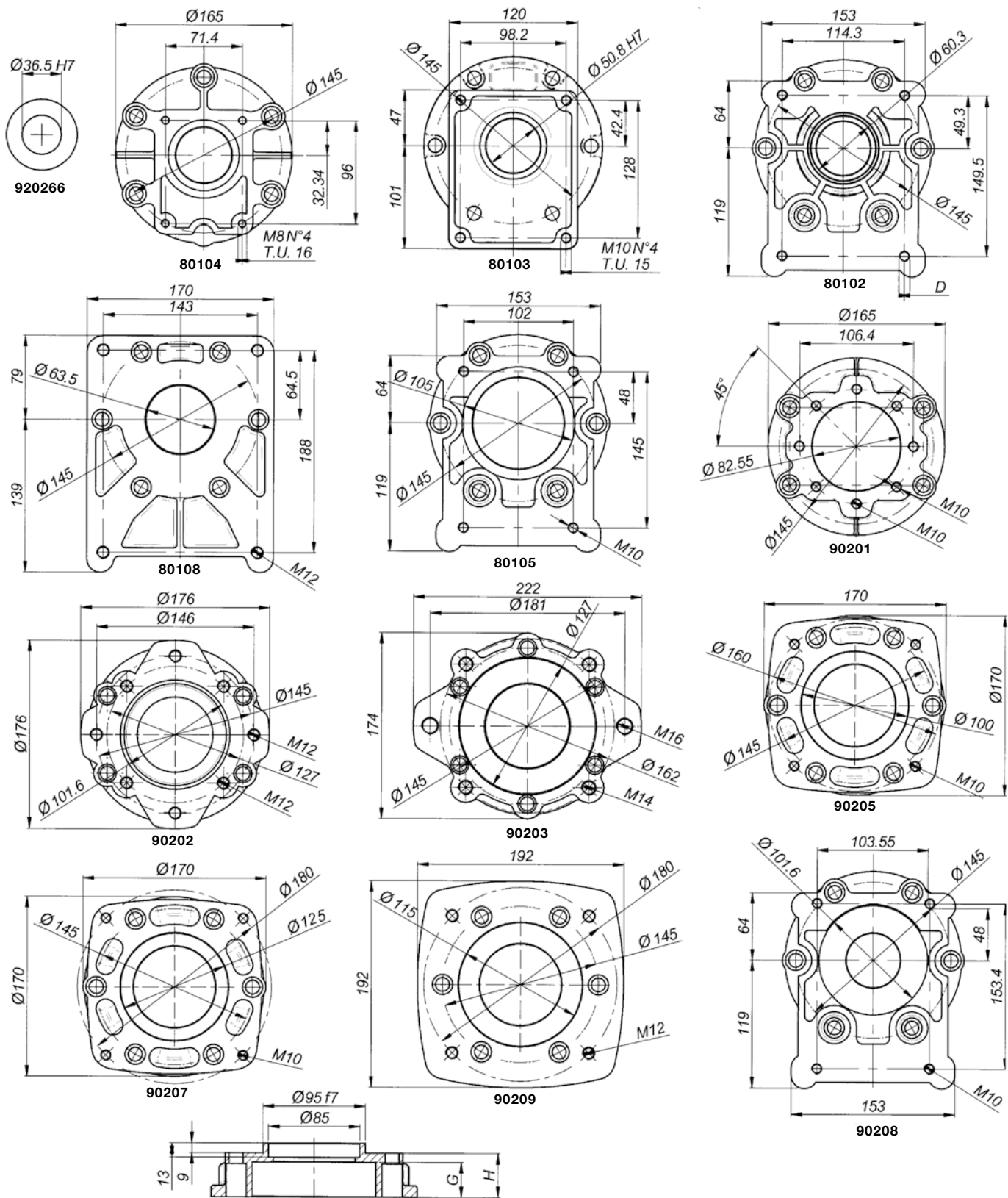


Pos.	DENOMINAZIONE	DENOMINATION	DESCRIPTION	BEZEICHNUNG	Q.TA'
1	Tappo sfiato olio 3/8"	Bouchon reniflard huile 3/8"	Oil breather plug 3/8"	Entlüftungsschraube 3/8"	1
2	Spina UNI 8751 8x20	Goupille UNI 8751 D.8x20	Peg UNI 8751 8x20	Stift durchm UNI 8751 8x20	8
3	Coperchio	Couvercle	Cover	Deckel	1
4	Tappo scarico olio 3/8"	Bouchon vindage huile 3/8"	Oil drain plug 3/8"	Olablabschraube 3/8"	3
5	Guarnizione	Joint	Gasket	Dichtung	4
6	Coperchietto DIN 470 D.42	Petit couvercle D.42 DIN 470	Cap DIN 470 D.42	Deckel DIN 470 , D.42	1
7	Vite V.T.C.E.I M8x30	Vis V.T.C.E.I M8x30	Socket capscrew M8x30	Zylinderkopfschraube mit Innensechskant M8x30	10
8	Vite T.C.E.I M12x25	Vis T.C.H.C. M 12x25	Socket capscrew M12x25	Zylinderkopfs. m. Innensechsk. M12x25	4
9	Albero presa di forza maschio 1" 3/8	Arbre prise de force male 1" 3/8	Male P.T.O. shaft 1" 3/8	Antriebswelle mit Aussenverkeilung 1" 3/8	1
10	Corona	Couronne	Ring gear	Zahnkranz	1
11	Scatola	Carcasse	Housing	Gehäuse	1
12	Cuscinetto tipo 6210	Pallier 6210	Bearing 6210	Kugellager tipo 6210	4
13	Pignone	Pignon	Pinion gear	Ritzel	1
14	Flangia	Bride	Flange	Flansch	1
15	Anello di tenuta 50x65x8	Bague d'étanchéité 50x65x8	Sealing ring 50x65x8	Dichtring, Durchm. 50x65x8	2
16	Chiavetta 12x25	Clavette 12x25	Key 12x25	Keil 12x25	1
17	Coperchietto DIN 470 D.37	Petit couvercle D.37 DIN 470	Cap DIN 470 D.37	Deckel DIN 470 , D.37	1
18	Albero presa di forza femmina 1" 3/8	Arbre prise de force femelle 1" 3/8	Femelle P.T.O. shaft 1" 3/8	Antriebswelle mit Innenverkeilung 1" 3/8	1
19	Coperchietto DIN 470 D.37	Petit couvercle D.37 DIN 470	Cap DIN 470 D.37	Deckel DIN 470 , D.37	1
20	Albero presa di forza femmina 1" 3/8" Z6 attacco rapido	Arbre prise de force femelle 1"3/8" Z6 attelage rapide	Female P.T.O. shaft 1"3/8" Z6, Quick fitting	Antriebsw.m. Innenverkeilung 1" 3/8" Z6 , mit Schnellkupplung	1
21	Sfera d.13	Bille d.13	Ball d.13	Kugel Durchm 13	1
22	Anello porta molla	Bague porte-ressot	Spring ring	Federhülter	1
23	Molla	Ressot	Spring	Feder	1
24	Anello	Bague	Ring	Ring	1
25	Anello seeger d.50	Circlip d.50	Snap ring d.50	Seegerring, Durchm. 50	1

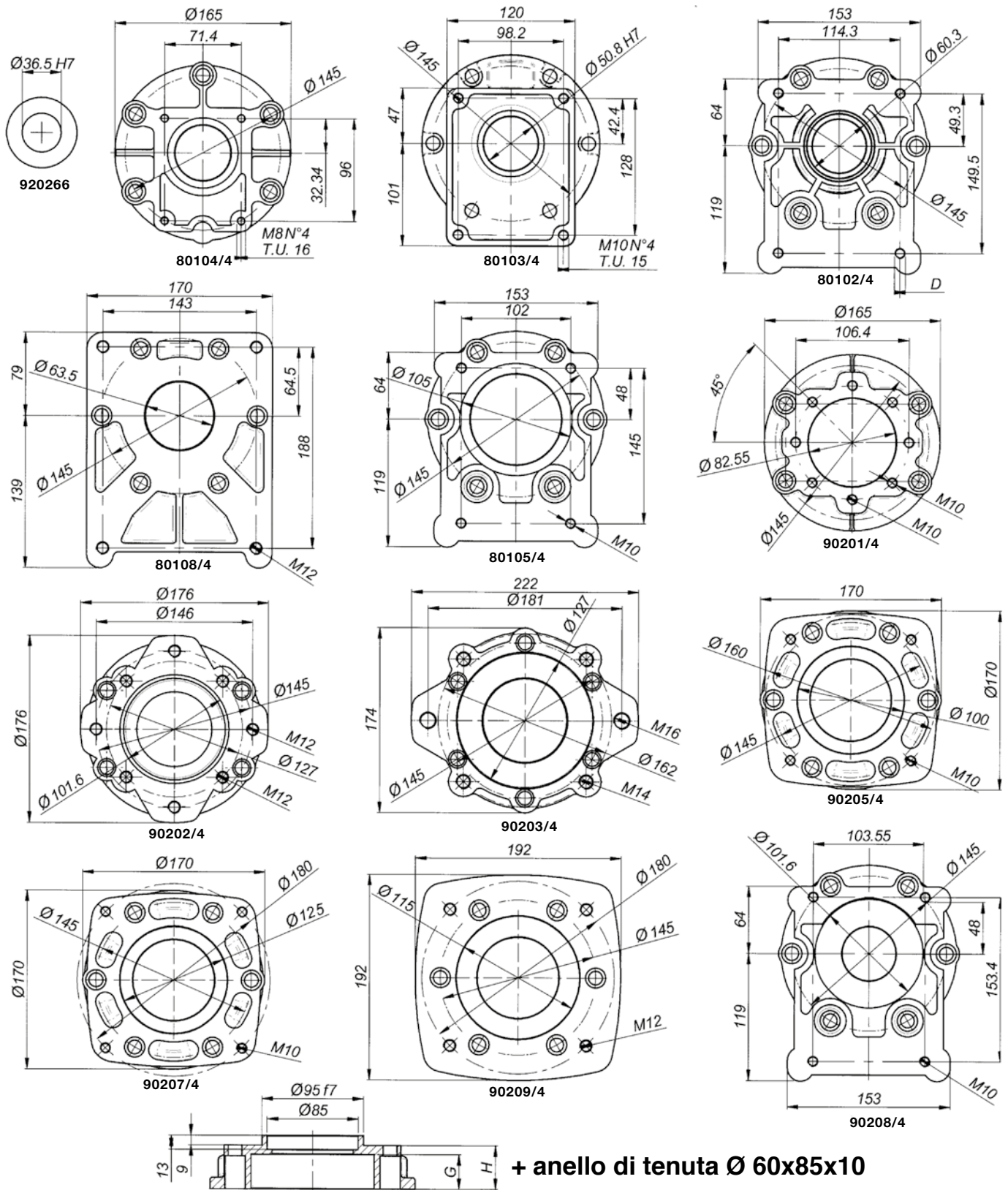
SERIE: 93000



M1 da Nm	M2 da Nm	N. 1 giri/ 1' tours/ 1' R.P.M Об/мин	N. 2 giri/ 1' tours/ 1' R.P.M Об/мин	I N.1/N.2	МОЩНОСТЬ Kw	G Kg
120	60	540	1080	2	68	27
124	49,50	540	1350	2,5	70	27
128	40	540	1728	3,2	72	27
117	31,5	540	1998	3,7	66	27



Code	FLANGIA: TIPO, BRIDE: TYPE, FLANGE: TYPE, FLANSCHTYPE											
	Gr. 2	Gr. 3	Gr. 3,5	Gr. 4	Gr. 3 Bosch	SAE A	SAE B	SAE C	LG.20-35	L.G. 50	L.G. 75	ULTRA3PLDOWTY
80104	80103	80102	80108	80105	90201	90202	90203	90205	90207	90209	90208	
G	21	22	24,5	36	12	25	12	15	20,5	33	57	10
H	21	22	24,5	36	24	25	25	28	26,5	43	72	24



	FLANGIA: TIPO, BRIDE: TYPE, FLANGE: TYPE, FLANSCHTYPE											
	Gr. 2	Gr. 3	Gr. 3,5	Gr. 4	Gr. 3 Bosch	SAE A	SAE B	SAE C	L.G. 20-35	L.G. 50	L.G. 75	ULTRA 3PL DOWTY
Code	80104/4	80103/4	80102/4	80108/4	80105/4	90201/4	90202/4	90203/4	90205/4	90207/4	90209/4	90208/4
G	21	22	24,5	36	12	25	12	15	20,5	33	57	10
H	21	22	24,5	36	24	25	25	28	26,5	43	72	24