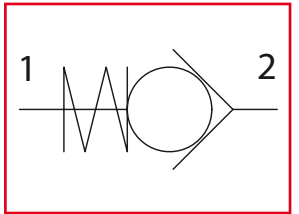


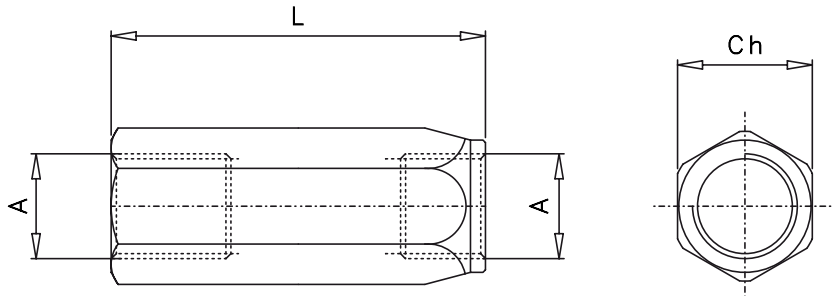
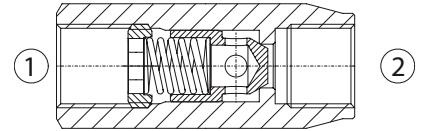
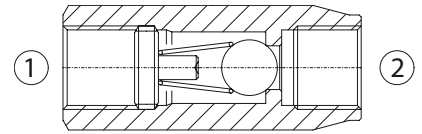


# VUR-BSP

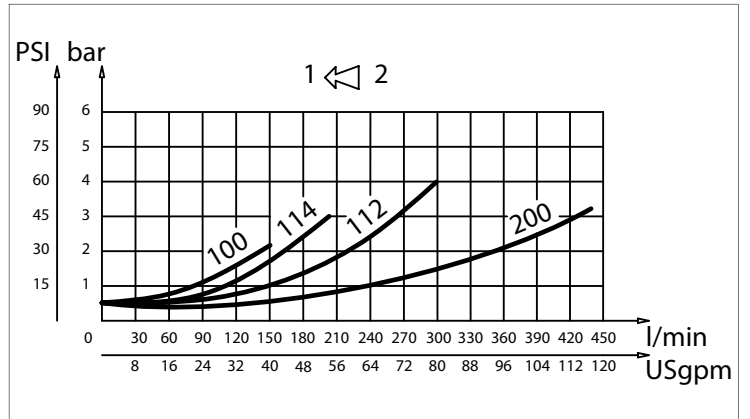
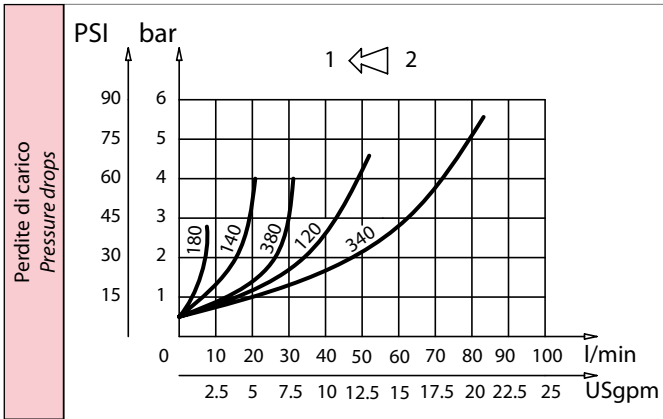
Valvole unidirezionali  
Check valves



Dati tecnici Technical data	
Viscosità fluido Fluid viscosity	10-500 mm <sup>2</sup> /s 45 to 2000 ssu (6 to 420 cSt)
Classe di contaminazione Filtration	ISO code 16/13 SAE class 4 or better
Temperatura fluido Fluid temperature	-20°C +80°C -4°F +176°F
Temperatura ambiente Ambient temperature	-20°C +50°C -4°F +122°F



mm  
(Inches)



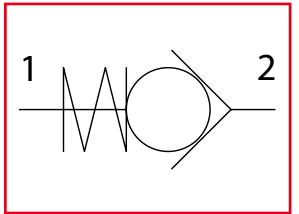
Caratteristiche tecniche Technical performances						
Codice Code	A	Portata Max Max flow l/min-USgpm	Pressione Max Max pressure bar/PSI	L	Ch	Peso approssimativo Approx weight Kg/lb
VUR 180	BSPP 1/8	5 (1.3)	400 (5800)	47 (1.85)	14 (0.55)	0,05 (0,11)
VUR 140	BSPP 1/4	15 (4)	350 (5000)	55 (2.16)	19 (0.75)	0,10 (0,22)
VUR 380	BSPP 3/8	30 (8)		65 (2.56)	24 (0.94)	0,18 (0,40)
VUR 120	BSPP 1/2	50 (13)	320 (4600)	75 (2.95)	27 (1.06)	0,31 (0,70)
VUR 340	BSPP 3/4	90 (23)	300 (4350)	86,5 (3.41)	35 (1.38)	0,45 (1)
VUR 100	BSPP 1	150 (40)	250 (3600)	110 (4.33)	41 (1.61)	0,95 (2,10)
VUR 114	BSPP 1-1/4	200 (50)		123 (4.84)	55 (2.16)	1,49 (3,30)
VUR 112	BSPP 1-1/2	300 (80)	210 (3000)	138 (5.43)	60 (2.36)	2,40 (5,30)
VUR 200	BSPP 2	430 (110)	150 (2100)	160 (6.30)	70 (2.76)	3 (6,60)

Codice ordinazione Ordering code			
VUR - X - Y - K			
X	Dimensione / Size	Y	Tenuta / Sealing
180	BSPP 1/8	SF	Tenuta a sfera solo per VUR 180/140/380/120 Ball sealing only for VUR 180/140/380/120
140	BSPP 1/4		
380	BSPP 3/8		
120	BSPP 1/2	SP	Tenuta a cono Poppet sealing
340	BSPP 3/4		
100	BSPP 1	K	Molla / Spring
114	BSPP 1-1/4		
112	BSPP 1-1/2		
200	BSPP 2		
		3	3 bar
		6	6 bar

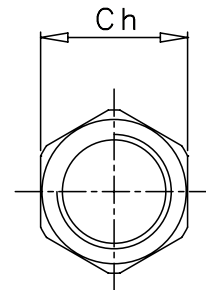
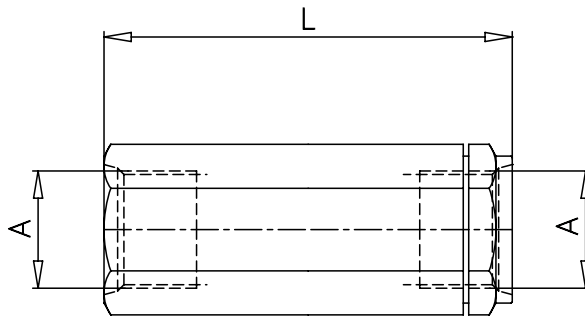
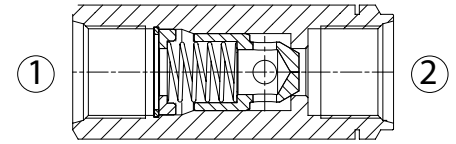


# VUR-SAE

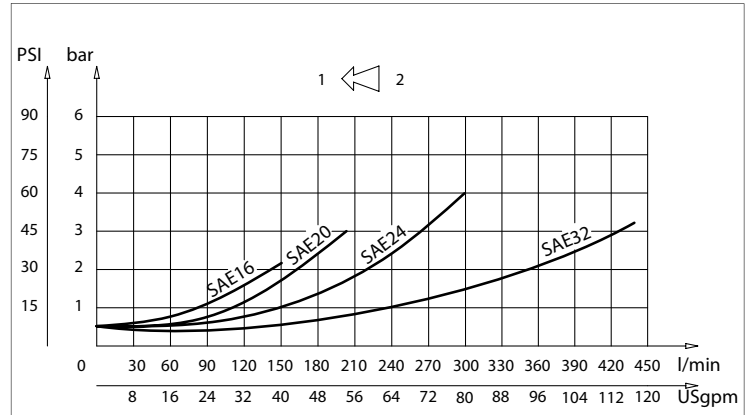
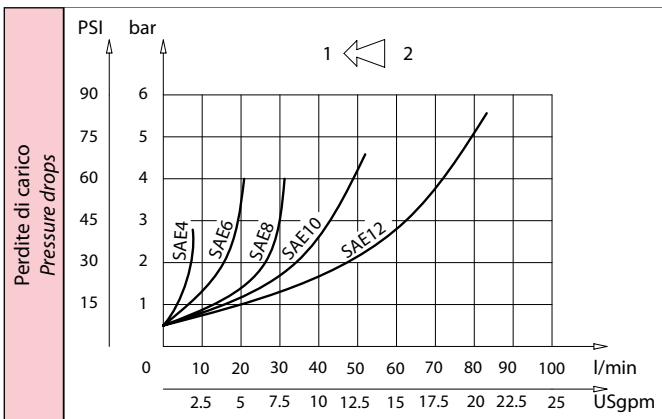
Valvole unidirezionali  
Check valves



Dati tecnici Technical data	
Viscosità fluido Fluid viscosity	10-500 mm <sup>2</sup> /s 45 to 2000 ssu (6 to 420 cSt)
Classe di contaminazione Filtration	ISO code 16/13 SAE class 4 or better
Temperatura fluido Fluid temperature	-20°C +80°C -4°F +176°F
Temperatura ambiente Ambient temperature	-20°C +50°C -4°F +122°F



[ mm  
(Inches) ]



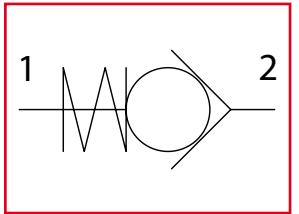
Caratteristiche tecniche Technical performances						
Codice Code	A	Portata Max Max flow l/min - USgpm	Pressione Max Max pressure bar/PSI	L	Ch	Peso approssimativo Approx weight Kg / lb
VUR 4 SAE	7/16 - 20 UNF	5 (1.3)	400 (5800)	55 (2.16)	19 (0.75)	0,05 (0.11)
VUR 6 SAE	9/16 - 18 UNF	15 (4)		58 (2.28)	19 (0.75)	0,10 (0.22)
VUR 8 SAE	3/4 - 16 UNF	30 (8)		69 (2.71)	24 (0.94)	0,18 (0.40)
VUR 10 SAE	7/8 - 14 UNF	50 (13)		75 (2.95)	27 (1.06)	0,31 (0.70)
VUR 12 SAE	1-1/16-12 UNF	90 (23)		88,5 (3.48)	35 (1.38)	0,45 (1)
VUR 16 SAE	1-5/16-12 UNF	150 (40)	350 (5000)	110 (4.33)	41 (1.61)	0,95 (2.1)
VUR 20 SAE	1-5/8-12 UNF	200 (50)		120 (4.72)	55 (2.16)	1,49 (3.30)
VUR 24 SAE	1-7/8-12 UNF	300 (80)		138 (5.43)	60 (2.36)	2,40 (5.30)
VUR 32 SAE	2-1/2-12 UNF	430 (110)		138 (5.43)	75 (2.97)	3 (6.60)

Codice ordinazione Ordering code			
VUR-X-SAE-Y-K			
X	Dimensione / Size	Y	Tenuta / Sealing
4	7/16 - 20 UNF	SP	Tenuta a cono Poppet sealing
6	9/16 - 18 UNF		
8	3/4 - 16 UNF		
10	7/8 - 14 UNF		
12	1-1/16-12 UNF		
16	1-5/16-12 UNF	K	Molla / Spring
20	1-5/8-12 UNF	1	1 bar Standard
24	1-7/8-12 UNF	3	3 bar
32	2-1/2-12 UNF	6	6 bar

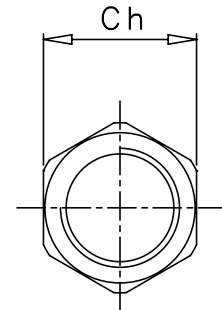
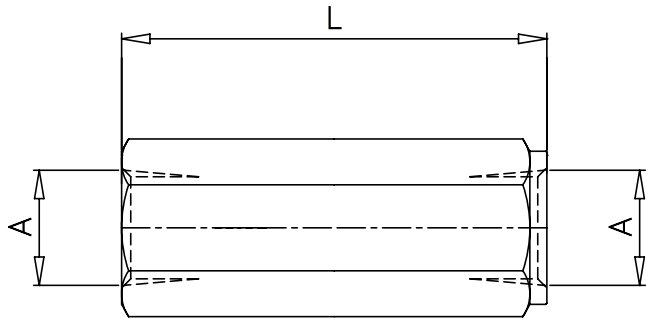
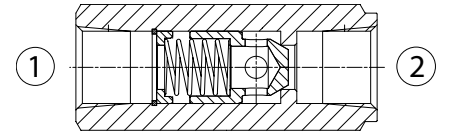


# VUR-NPTF

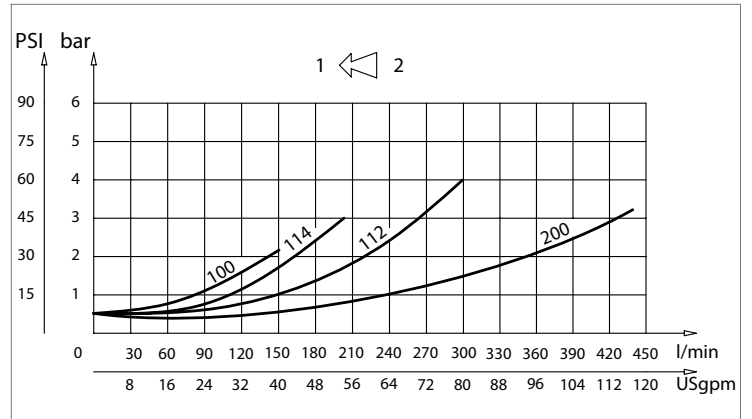
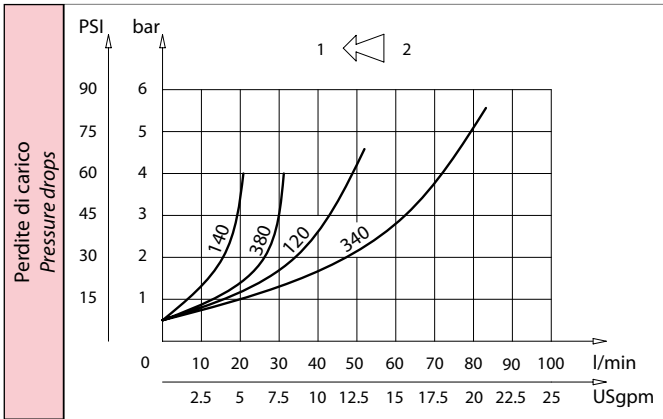
Valvole unidirezionali  
Check valves



Dati tecnici Technical data	
Viscosità fluido Fluid viscosity	10-500 mm <sup>2</sup> /s 45 to 2000 ssu (6 to 420 cSt)
Classe di contaminazione Filtration	ISO code 16/13 SAE class 4 or better
Temperatura fluido Fluid temperature	-20°C +80°C -4°F +176°F
Temperatura ambiente Ambient temperature	-20°C +50°C -4°F +122°F



mm  
(Inches)



Caratteristiche tecniche Technical performances						
Codice Code	A	Portata Max Max flow l/min - USgpm	Pressione Max Max pressure bar/PSI	L	Ch	Peso approssimativo Approx weight Kg / lb
VUR 140 NPTF	1/4 NPTF	15 (4)	400 (5800)	58 (2.28)	19 (0.75)	0,10 (0.22)
VUR 380 NPTF	3/8 NPTF	30 (8)		69 (2.72)	24 (0.94)	0,18 (0.40)
VUR 120 NPTF	1/2 NPTF	50 (13)		75 (2.95)	27 (1.06)	0,31 (0.70)
VUR 340 NPTF	3/4 NPTF	90 (23)		88,5 (3.48)	35 (1.38)	0,45 (1)
VUR 100 NPTF	1 NPTF	150 (40)	350 (5000)	110 (4.33)	41 (1.61)	0,95 (2.10)
VUR 114 NPTF	1-1/4 NPTF	200 (50)		120 (4.72)	55 (2.16)	1,49 (3.30)
VUR 112 NPTF	1-1/2 NPTF	300 (80)		138 (5.43)	60 (2.36)	2,40 (5.30)
VUR 200 NPTF	2 NPTF	430 (110)		75 (2.95)	75 (2.95)	3 (6.60)

Codice ordinazione Ordering code			
<b>VUR-X-NPTF-Y-K</b>			
X	Dimensione / Size	Y	Tenuta / Sealing
140	1/4 NPTF	SP	Tenuta a cono Poppet sealing
380	3/8 NPTF		
120	1/2 NPTF		
340	3/4 NPTF		
100	1 NPTF	K	Molla / Spring
114	1 - 1/4 NPTF	1	1 bar Standard
112	1 - 1/2 NPTF	3	3 bar
200	2 NPTF	6	6 bar