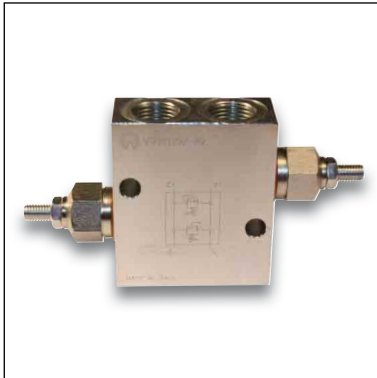
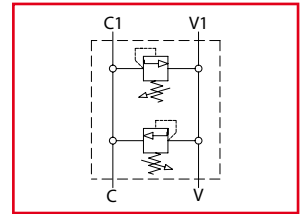


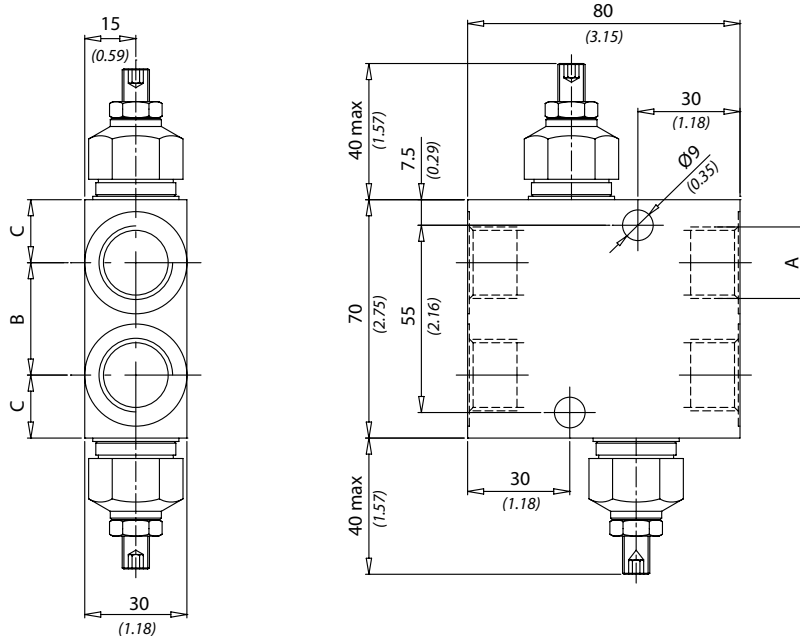
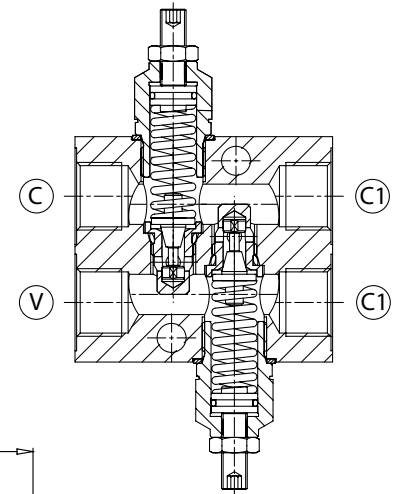


# VBDC

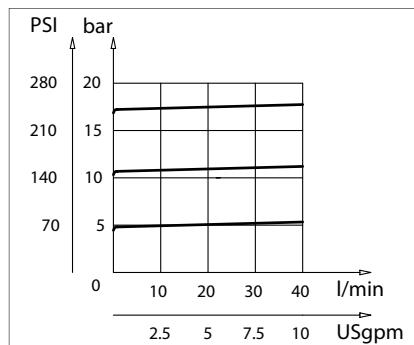
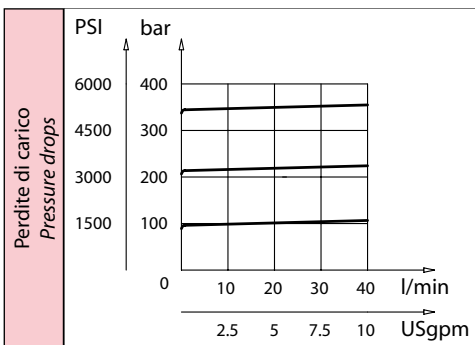
Valvole antiurto doppie incrociate  
Double cross line direct acting relief valves



Dati tecnici Technical data	
Viscosità fluido Fluid viscosity	10-500 mm <sup>2</sup> /s 45 to 2000 ssu (6 to 420 cSt)
Classe di contaminazione Filtration	ISO code 16/13 SAE class 4 or better
Temperatura fluido Fluid temperature	-20°C +80°C -4°F +176°F
Temperatura ambiente Ambient temperature	-20°C +50°C -4°F +122°F



mm  
Inches



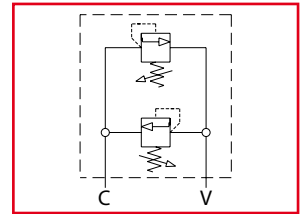
Caratteristiche tecniche Technical performances							
Codice Code	A	Portata Max Max flow l/min - USgpm	Pressione Max Max pressure bar/PSI	B	C	Peso approssimativo Approx weight Kg / lb	Valvola tipo Type of valve
VBDC380	BSPP 3/8	40 (10.5)	350 (5000)	28 (1.10)	21 (0.83)	1,1 (2.45)	VMD40
VBDC120	BSPP 1/2			33 (1.30)	18,5 (0.73)		

Codice ordinazione Ordering code			
VBDC - X - Y - K			
X	Dimensione / Size	K	Cappuccio in plastica Safety cap
380	BSPP 3/8	s	
120	BSPP 1/2		
Y	Molla / Spring		
1	100 bar (1450 PSI) max		
2	210 bar (3000 PSI) max		
3	350 bar (5000 PSI) max		

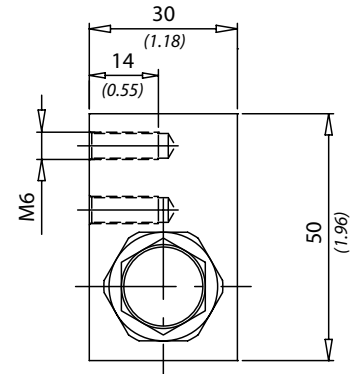
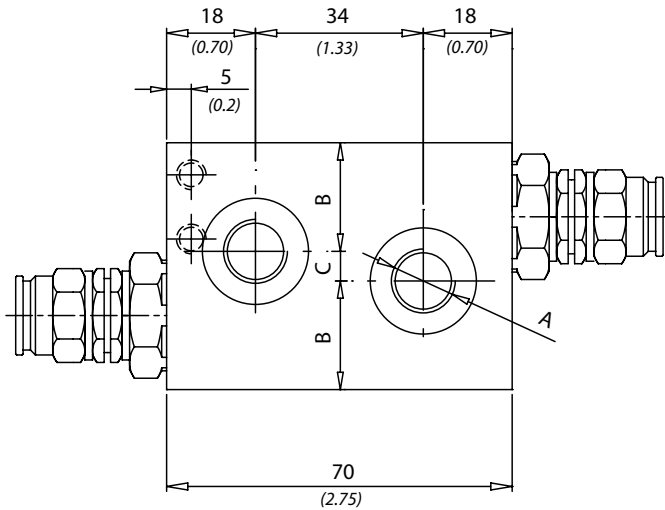
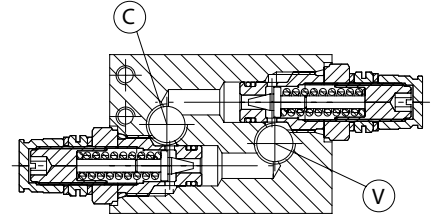


# DCA

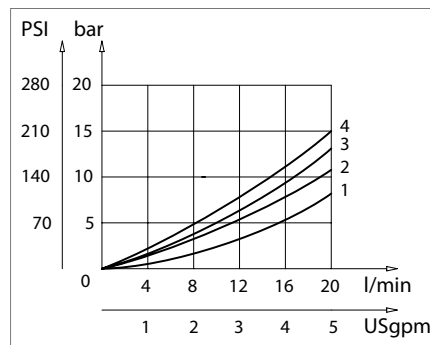
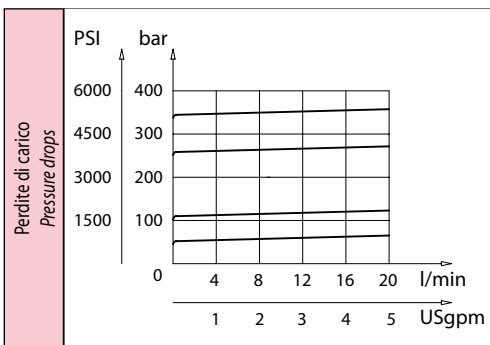
Valvole antiurto doppie incrociate  
Double cross line direct acting relief valves



Dati tecnici Technical data	
Viscosità fluido Fluid viscosity	10-500 mm <sup>2</sup> /s 45 to 2000 ssu (6 to 420 cSt)
Classe di contaminazione Filtration	ISO code 16/13 SAE class 4 or better
Temperatura fluido Fluid temperature	-20°C +80°C -4°F +176°F
Temperatura ambiente Ambient temperature	-20°C +50°C -4°F +122°F



mm  
Inches



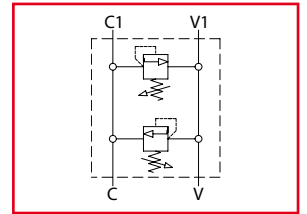
Caratteristiche tecniche Technical performances							
Codice Code	A	Portata Max Max flow l/min - USgpm	Pressione Max Max pressure bar/PSI	B	C	Peso approssimativo Approx weight Kg / lb	Valvola tipo Type of valve
DCA140	BSPP1/4	20 (5.3)	350 (5000)	22 (0.87)	6 (0.24)	0,8 (1.8)	VMD1
DCA380	BSPP 3/8			20 (0.79)	10 (0.39)		

Codice ordinazione Ordering code			
DCA - X - Y			
X	Dimensione / Size	Y	Molla / Spring
140	BSPP 1/4	1	40 bar (580 PSI) max
		2	110 bar (1600 PSI) max
380	BSPP 3/8	3	250 bar (3600 PSI) max
		4	350 bar (5000 PSI) max

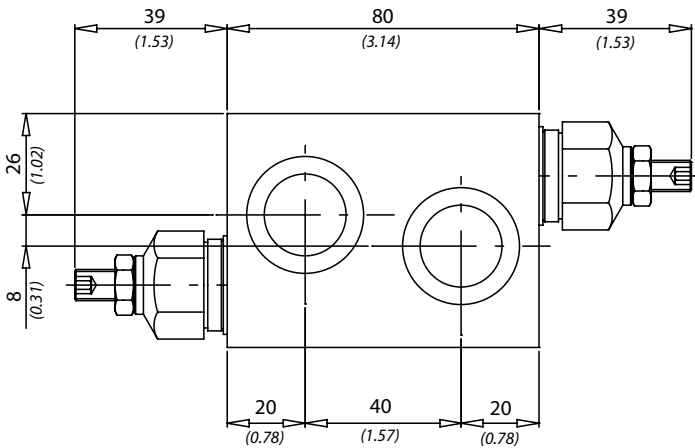
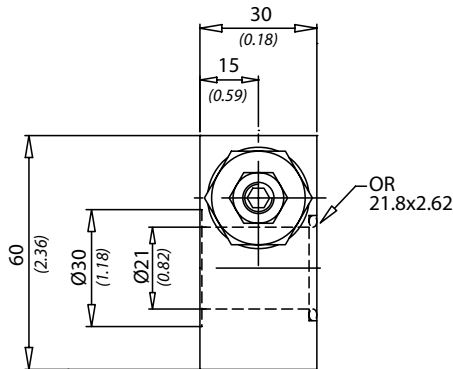
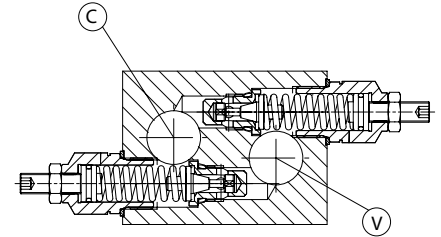


# DCL

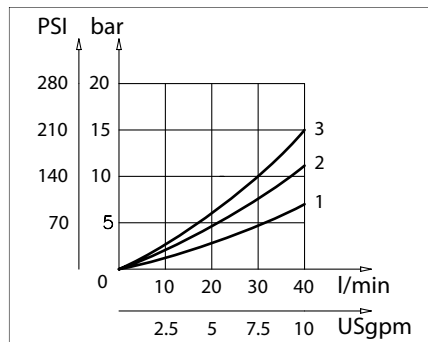
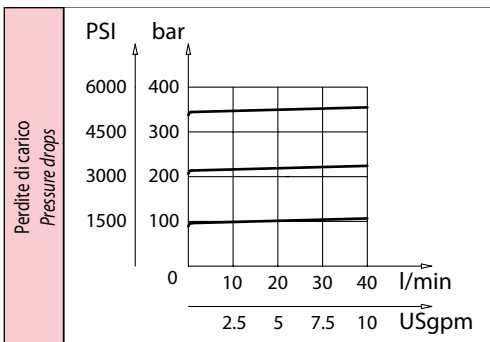
Valvole antiurto doppie incrociate  
Double cross line direct acting relief valves



Dati tecnici Technical data	
Viscosità fluido Fluid viscosity	10-500 mm <sup>2</sup> /s 45 to 2000 ssu (6 to 420 cSt)
Classe di contaminazione Filtration	ISO code 16/13 SAE class 4 or better
Temperatura fluido Fluid temperature	-20°C +80°C -4°F +176°F
Temperatura ambiente Ambient temperature	-20°C +50°C -4°F +122°F



mm  
Inches



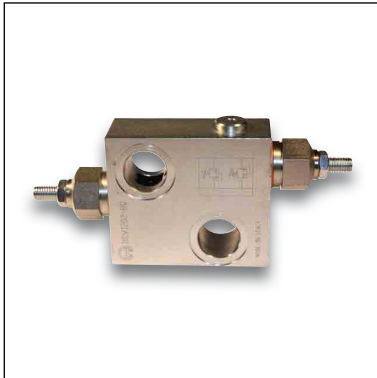
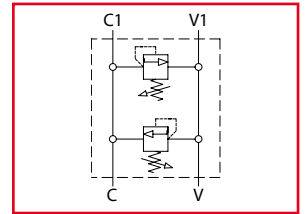
Caratteristiche tecniche Technical performances					
Codice Code	A	Portata Max Max flow l/min - USgpm	Pressione Max Max pressure bar/PSI	Peso approssimativo Approx weight Kg / lb	Valvola tipo Type of valve
DC120	BSPP 1/2	40 (10.5)	350 (5000)	1,5 (3.3)	VMD40

Codice ordinazione Ordering code			
DCL - X - Y - K			
X	Dimensione / Size	K	Cappuccio in plastica Safety cap
120	BSPP 1/2	s	
Y	Molla / Spring		
1	100 bar (1450 PSI) max		
2	210 bar (3000 PSI) max		
3	350 bar (5000 PSI) max		

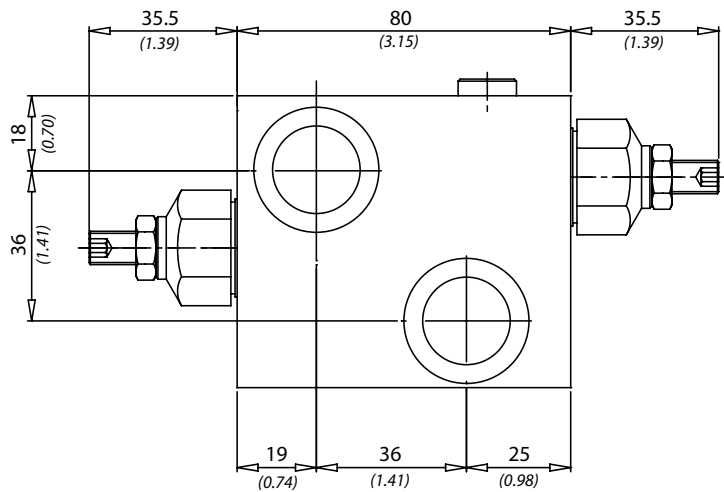
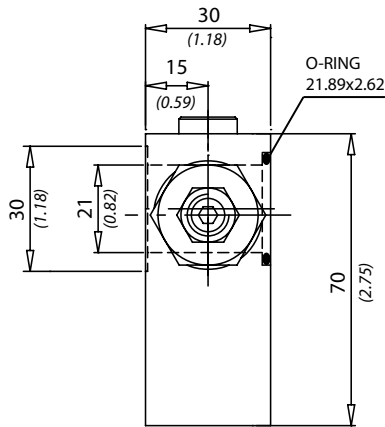
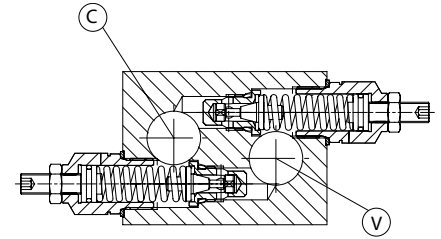


# DCV

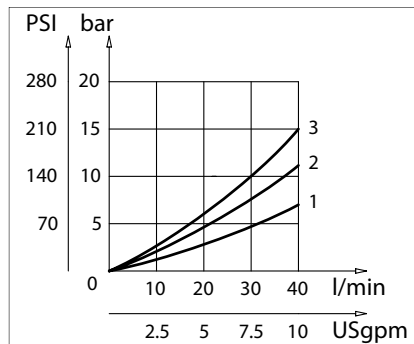
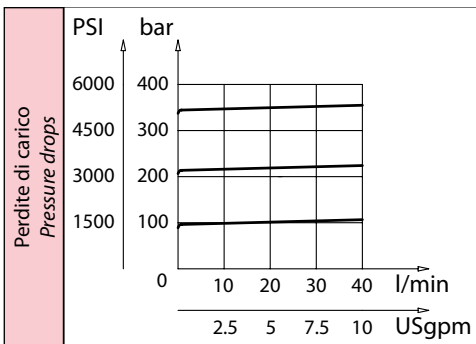
Valvole antiurto doppie incrociate  
Double cross line direct acting relief valves



Dati tecnici Technical data	
Viscosità fluido Fluid viscosity	10-500 mm <sup>2</sup> /s 45 to 2000 ssu (6 to 420 cSt)
Classe di contaminazione Filtration	ISO code 16/13 SAE class 4 or better
Temperatura fluido Fluid temperature	-20°C +80°C -4°F +176°F
Temperatura ambiente Ambient temperature	-20°C +50°C -4°F +122°F



mm  
(Inches)



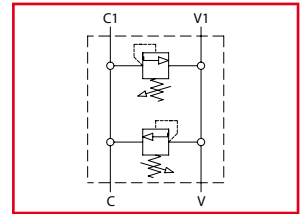
Caratteristiche tecniche Technical performances					
Codice Code	A	Portata Max Max flow l/min - USgpm	Pressione Max Max pressure bar/PSI	Peso approssimativo Approx weight Kg / lb	Valvola tipo Type of valve
DCV120	BSPP 1/2	40 (10.5)	350 (5000)	1,2 (2.7)	VMD40

Codice ordinazione Ordering code			
DCV - X - Y - K			
X	Dimensione / Size	K	Cappuccio in plastica Safety cap
120	BSPP 1/2	s	
Y	Molla / Spring		
1	100 bar (1450 PSI) max		
2	210 bar (3000 PSI) max		
3	350 bar (5000 PSI) max		

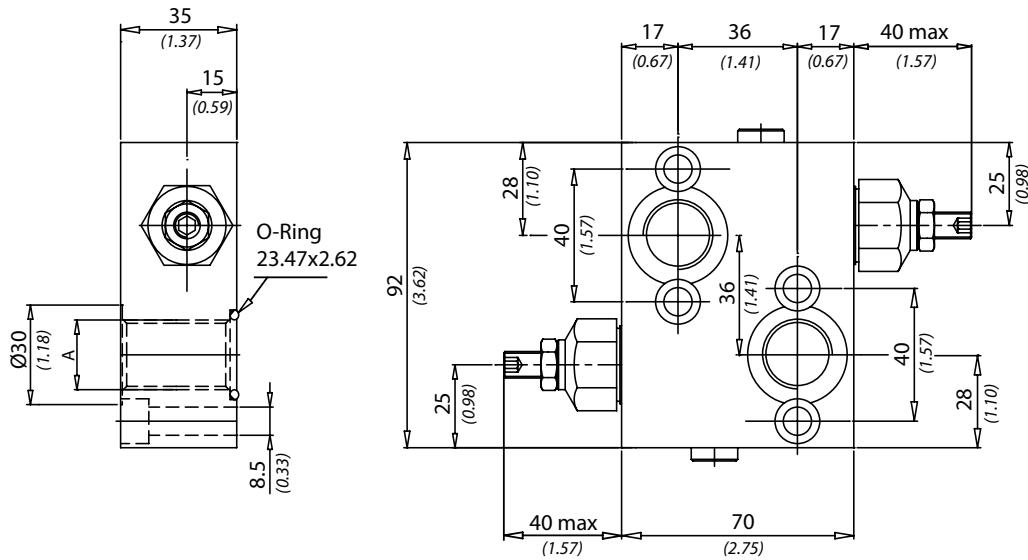
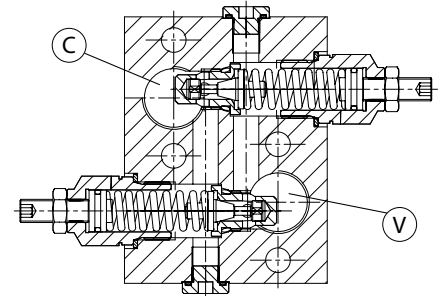


# DCF

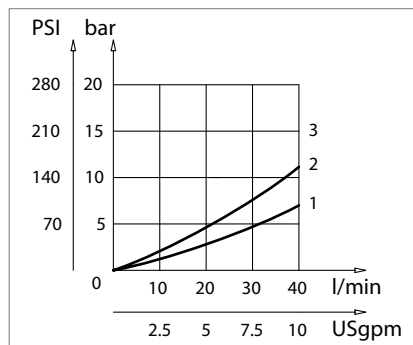
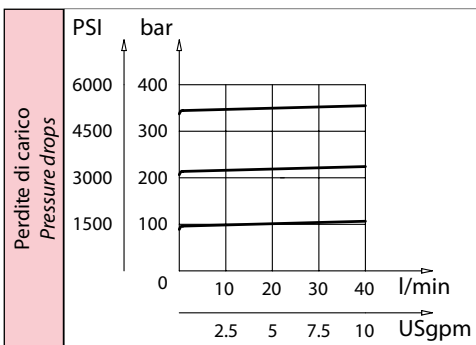
Valvola antiurto doppie incrociate  
Double cross line direct acting relief valves



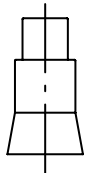
Dati tecnici Technical data	
Viscosità fluido Fluid viscosity	10-500 mm <sup>2</sup> /s 45 to 2000 ssu (6 to 420 cSt)
Classe di contaminazione Filtration	ISO code 16/13 SAE class 4 or better
Temperatura fluido Fluid temperature	-20°C +80°C -4°F +176°F
Temperatura ambiente Ambient temperature	-20°C +50°C -4°F +122°F



[ mm  
(Inches) ]



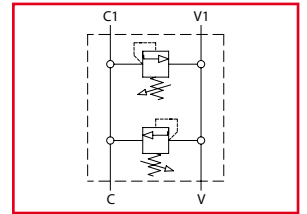
Caratteristiche tecniche Technical performances					
Code Code	A	Portata Max Max flow l/min - USgpm	Pressione Max Max pressure bar/PSI	Peso approssimativo Approx weight Kg / lb	Valvola tipo Type of valve
DCF120	BSPP 1/2	40 (10.5)	350 (5000)	1,5 (3.3)	VMD40
DCF7814	7/8 - 14 UNF				
DCF2215	M22 x 1,5				

Codice ordinazione Ordering code			
<b>DCF - X - Y - K</b>			
X	Dimensione / Size	K	Cappuccio in plastica Safety cap
120	BSPP 1/2	s	
7814	7/8 - 14UNF		
2215	M22x1.5		
Y	Molla / Spring		
1	100 bar (1450 PSI) max		
2	210 bar (3000 PSI) max		
3	350 bar (5000 PSI) max		

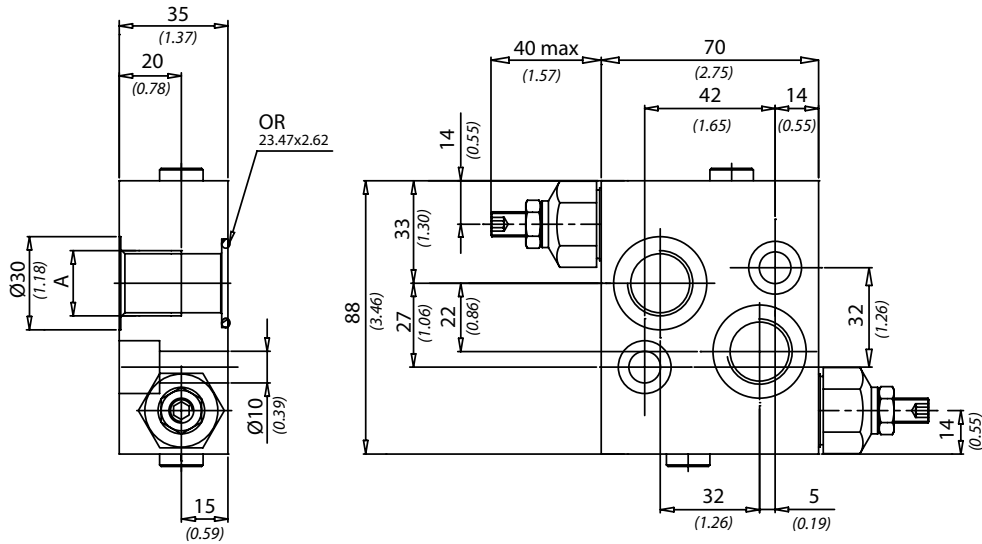
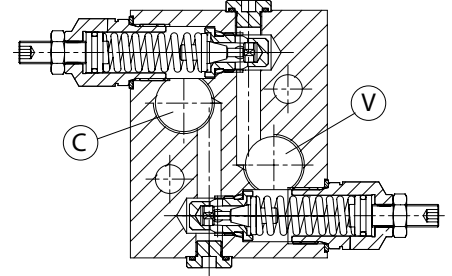


# DCM

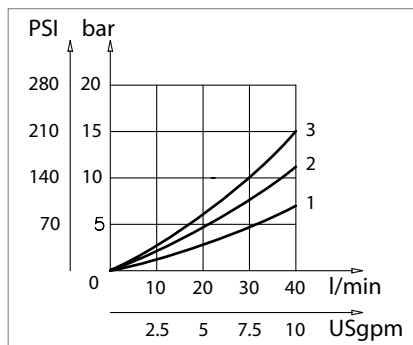
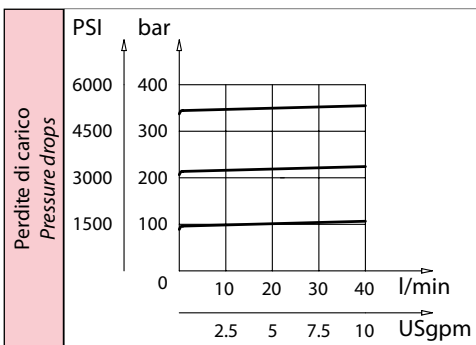
Valvola antiurto doppie incrociate  
Double cross line direct acting relief valves



Dati tecnici Technical data	
Viscosità fluido Fluid viscosity	10-500 mm <sup>2</sup> /s 45 to 2000 ssu (6 to 420 cSt)
Classe di contaminazione Filtration	ISO code 16/13 SAE class 4 or better
Temperatura fluido Fluid temperature	-20°C +80°C -4°F +176°F
Temperatura ambiente Ambient temperature	-20°C +50°C -4°F +122°F



mm  
Inches



Caratteristiche tecniche Technical performances					
Code Code	A	Portata Max Max flow l/min - USgpm	Pressione Max Max pressure bar/PSI	Peso approssimativo Approx weight Kg / lb	Valvola tipo Type of valve
DCM120	BSPP 1/2	40 (10.5)	350 (5000)	1,5 (3.3)	VMD40
DCM7814	7/8 - 14 UNF				
DCM2215	M22 x 1,5				

Codice ordinazione Ordering code			
DCM - X - Y - K			
X	Dimensione / Size	K	Cappuccio in plastica Safety cap
120	BSPP 1/2	s	
7814	7/8 - 14UNF		
2215	M22x1.5		
Y	Molla / Spring		
1	100 bar (1450 PSI) max		
2	210 bar (3000 PSI) max		
3	350 bar (5000 PSI) max		