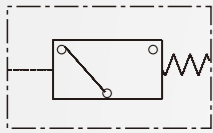


FRL COMBINATIONS

FRL COMBINATIONS

### Symbol



### Features

- \* Easy operation and safe.
- \* Compact size for simple installation.
- \* Stable Presswre setting .



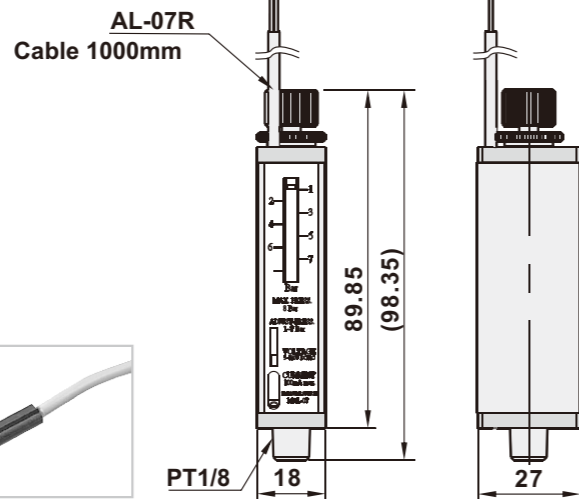
### Pressure setting notice

- \* the LED,When pressure drop to the setting value: OFF indicator is off.
- \* the LED,When pressure rise to the setting value: ON indicator is on.

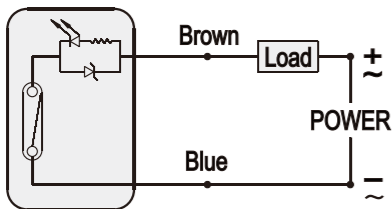
### How to order

<b>MAL-07</b>	<b>N</b>	—	<b>L</b>
Pressure switch	Thread		Pressure setting
	Blank	PT	Blank
	N	NPT	L
			OFF
			ON

### Dimensions



### Circuit diagram



Sensor	AL-07R
Voltage range	5~120VDC/AC
Max. current	100mA
Max. Contact rating	10W(VA)

### Specifications

Model	MAL-07
Port size	1/8"
Fluid	Compressed air
Body material	Aluminum
Proof pressure	10Bar(10.2 kgf/cm <sup>2</sup> )
Maximum pressure operating	7Bar(7.14 kgf/cm <sup>2</sup> )
Pressure setting range	1~7Bar(1.02~7.14 kgf/cm <sup>2</sup> )
Hysteresis pressure	0.75Bar
Repeatability (switch output)	±0.15Bar
Ambient temperature	-5°C ~ 60°C
Net Weight	127g

