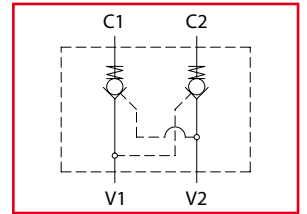


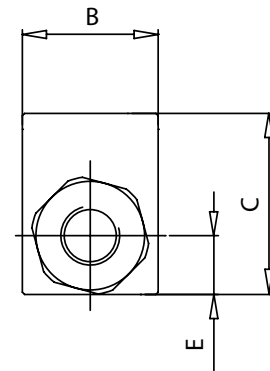
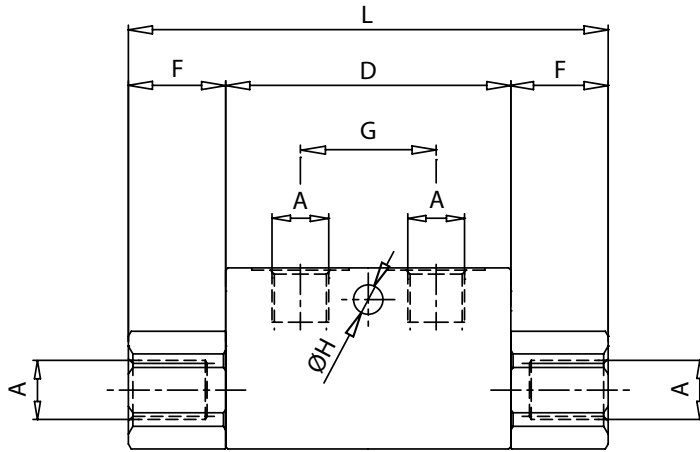
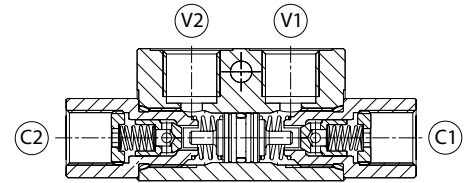


# VRDE

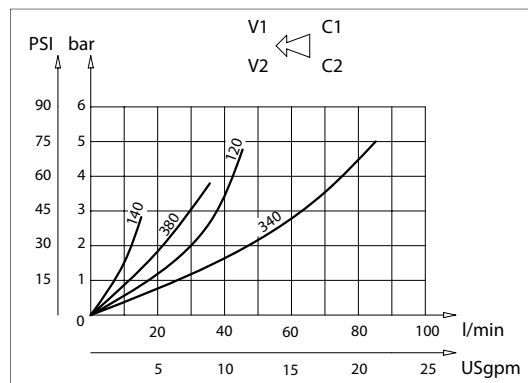
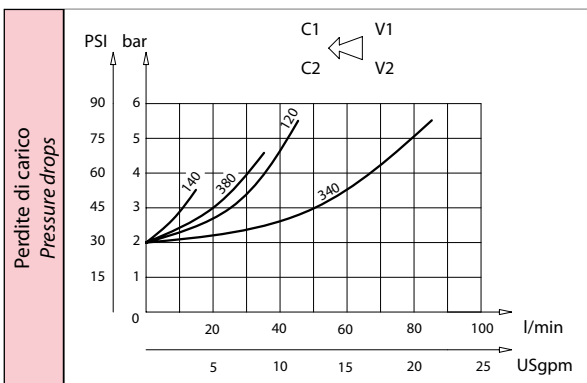
Valvole di blocco a doppio effetto  
Double acting pilot check valves



Dati tecnici Technical data	
Viscosità fluido Fluid viscosity	10-500 mm <sup>2</sup> /s 45 to 2000 ssu (6 to 420 cSt)
Classe di contaminazione Filtration	ISO code 16/13 SAE class 4 or better
Temperatura fluido Fluid temperature	-20°C +80°C -4°F +176°F
Temperatura ambiente Ambient temperature	-20°C +50°C -4°F +122°F



mm  
Inches



Codice ordinazione Ordering code	
<b>VRDE - X</b>	
X	Dimensione / Size
140	BSPP 1/4
380	BSPP 3/8
120	BSPP 1/2
340	BSPP 3/4

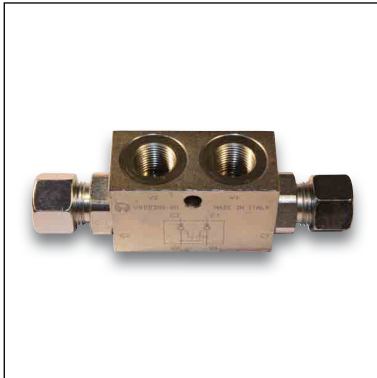
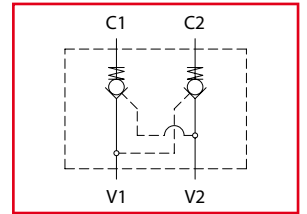
## Caratteristiche tecniche Technical performances

Code Codice	A	Portata Max Max flow l/min - USgpm	Pressione Max Max pressure bar/PSI	B	C	D	E	F	G	H	L	Peso approssimativo Approx weight Kg / lb	Rapporto di pilotaggio Pilot ratio
VRDE140	BSPP 1/4	15 (4)	320 (4500)	30 (1.18)	40 (1.57)	63 (2.48)	13 (0.51)	21,5 (0.85)	30 (1.18)	6,5 (0.26)	106 (4.17)	0,63 (1.4)	1:4
VRDE380	BSPP 3/8	35 (9.3)										0,60 (1.32)	
VRDE120	BSPP 1/2	45 (12)	300 (4350)	35 (1.38)	50 (1.97)	82 (3.23)	16,5 (0.65)	31,5 (1.24)	36 (1.42)	145 (5.71)	1,10 (2.42)		
VRDE340	BSPP 3/4	70 (18.5)									40 (1.57)	60 (2.36)	

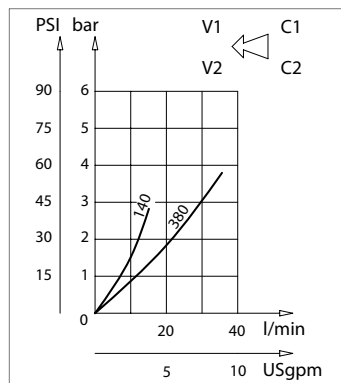
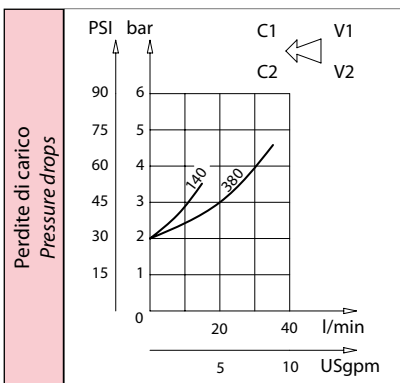
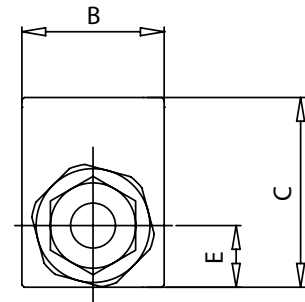
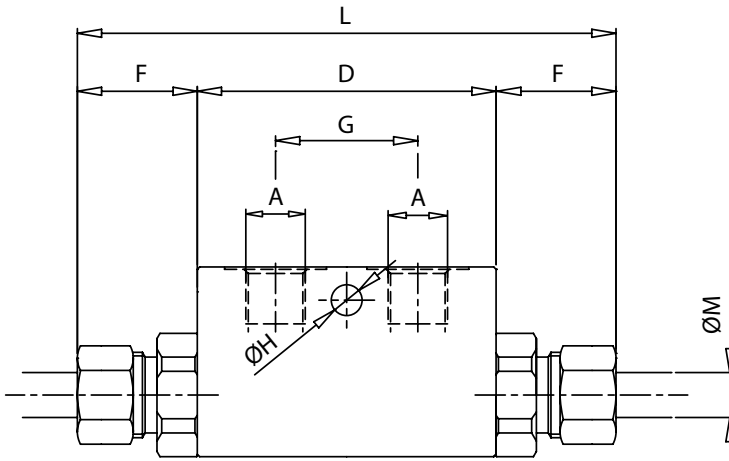
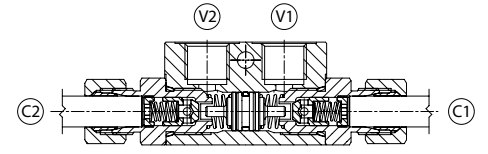


# VRDD

Valvole di blocco a doppio effetto  
Double acting pilot check valves



Dati tecnici Technical data	
Viscosità fluido Fluid viscosity	10-500 mm <sup>2</sup> /s 45 to 2000 ssu (6 to 420 cSt)
Classe di contaminazione Filtration	ISO code 16/13 SAE class 4 or better
Temperatura fluido Fluid temperature	-20°C +80°C -4°F + 176°F
Temperatura ambiente Ambient temperature	-20°C +50°C -4°F + 122°F



[ mm  
(Inches)

Codice ordinazione Ordering code			
<b>VRDD - X - Y</b>			
X	Dimensione / Size	Y	Dimensione / Size
140	BSPP 1/4	T8	Per tubo Ø 8 For Ø 8 pipe
380	BSPP 3/8	T12	Per tubo Ø 12 For Ø 12 pipe

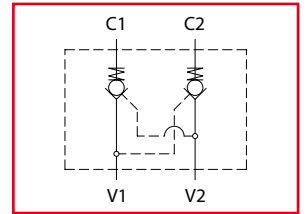
## Caratteristiche tecniche Technical performances

Code Codice	A	Portata Max Max flow l/min - USgpm	Pressione Max Max pressure bar/PSI	B	C	D	E	F	G	H	L	M	Peso approssimativo Approx weight Kg / lb	Rapporto di pilotaggio Pilot ratio
VRDD140T8	BSPP 1/4	10 (2.5)	320 (4500)	30 (1.18)	40 (1.57)	63 (2.48)	13 (0.51)	25 (0.98)	30 (1.18)	6,5 (0.26)	113 (4.45)	8 (0.32)	0,62 (1.4)	1:9
VRDD140T12	BSPP 3/8	15 (4)						32 (1.26)			127 (5)	12 (0.47)		1:4
VRDD380T12	BSPP 1/2	35 (9)												

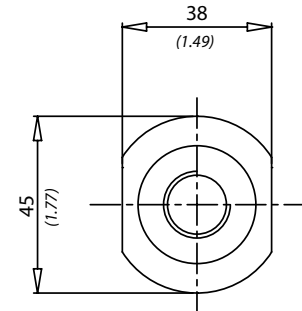
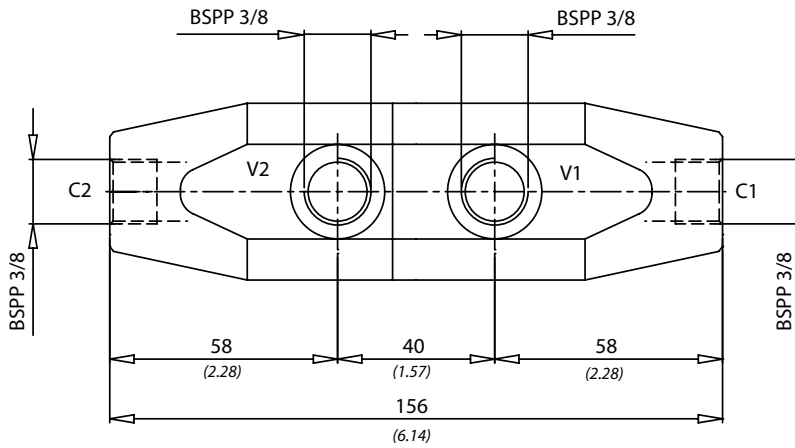
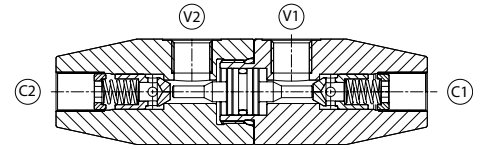


# VRDP

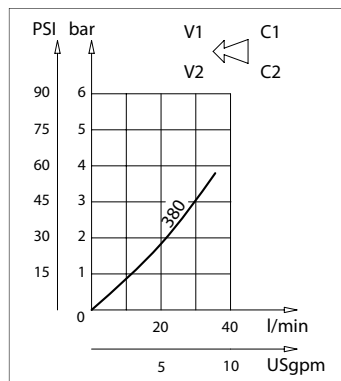
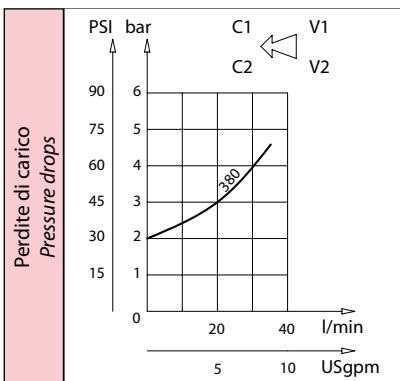
Valvole di blocco a doppio effetto  
Double acting pilot check valves



Dati tecnici Technical data	
Viscosità fluido Fluid viscosity	10-500 mm <sup>2</sup> /s 45 to 2000 ssu (6 to 420 cSt)
Classe di contaminazione Filtration	ISO code 16/13 SAE class 4 or better
Temperatura fluido Fluid temperature	-20°C +80°C -4°F +176°F
Temperatura ambiente Ambient temperature	-20°C +50°C -4°F +122°F



mm  
(Inches)



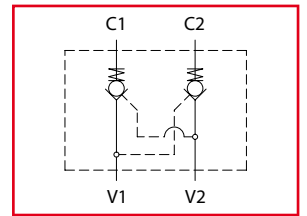
Caratteristiche tecniche Technical performances				
Codice Code	Portata Max Max flow l/min - USgpm	Pressione Max Max pressure bar/PSI	Peso approssimativo Approx weight Kg / lb	Rapporto di pilotaggio Pilot ratio
<b>VRDP 380</b>	<b>35 (9)</b>	<b>320 (4500)</b>	<b>1,42 (3.15)</b>	<b>1:4</b>

Codice ordinazione Ordering code
<b>VRDP-380</b>

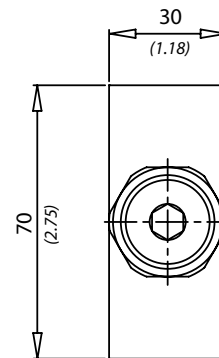
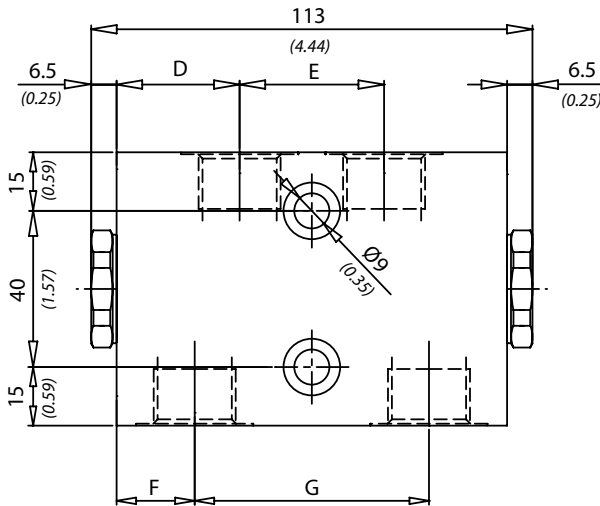
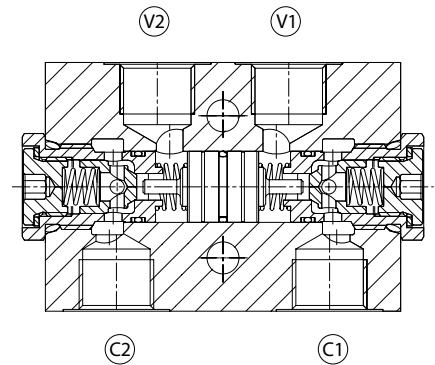


# VRDL

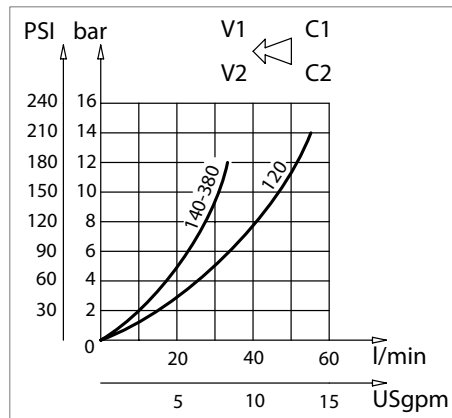
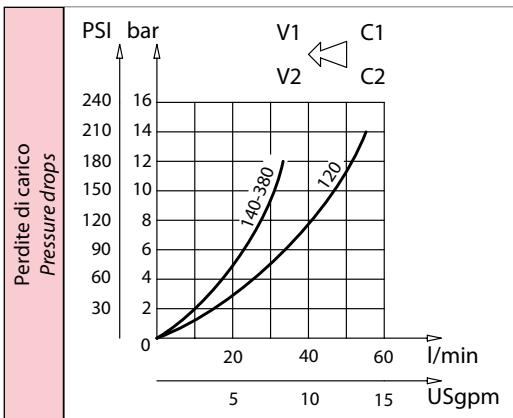
Valvole di blocco a doppio effetto  
Double acting pilot check valves



Dati tecnici Technical data	
Viscosità fluido Fluid viscosity	10-500 mm <sup>2</sup> /s 45 to 2000 ssu (6 to 420 cSt)
Classe di contaminazione Filtration	ISO code 16/13 SAE class 4 or better
Temperatura fluido Fluid temperature	-20°C +80°C -4°F +176°F
Temperatura ambiente Ambient temperature	-20°C +50°C -4°F +122°F



[ mm  
(Inches) ]



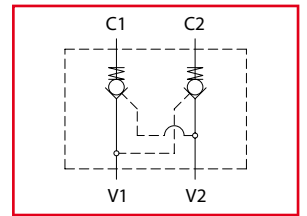
Caratteristiche tecniche Technical performances									
Codice Code	A	Portata Max Max flow l/min - USgpm	Pressione Max Max pressure bar/PSI	D	E	F	G	Peso approssimativo Approx weight Kg / lb	Rapporto di pilotaggio Pilot ratio
VRDL140	BSPP 1/4	35 (9)	350 (5000)	35 (1.38)	30 (1.18)	18 (0.71)	64 (2.52)	1,25 (2.75)	1:7.1
VRDL380	BSPP 3/8			31,5 (1.24)	37 (1.46)	20 (0.79)	60 (2.36)	1,39 (3.1)	
VRDL120	BSPP 1/2	50 (13)		20 (0.79)	60 (2.36)	1,32 (2.9)			

Codice ordinazione Ordering code	
<b>VRDL-X</b>	
<b>X</b>	Dimensione / Size
140	BSPP 1/4
380	BSPP 3/8
120	BSPP 1/2

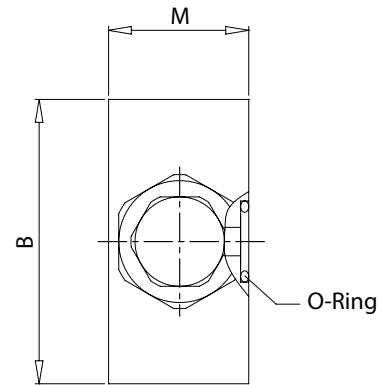
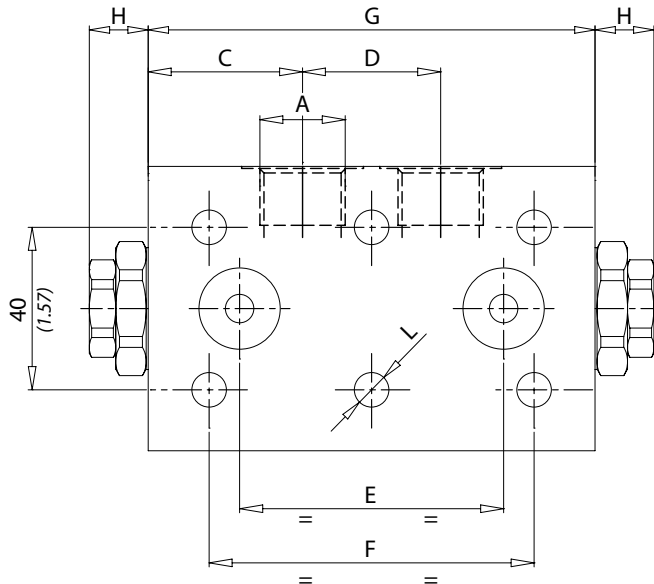
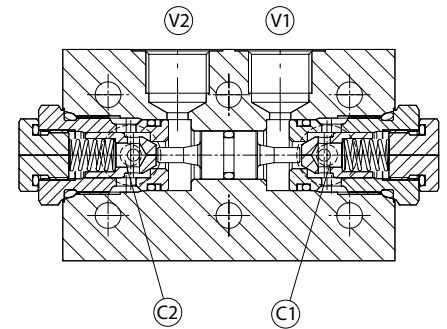


# VRDF

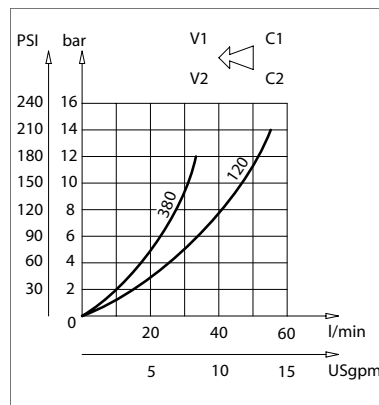
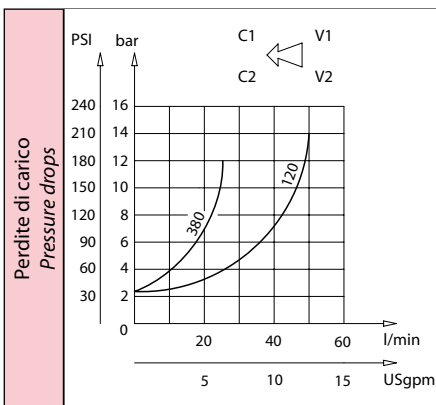
Valvola di blocco flangiata doppio effetto  
Double acting pilot check valves-flanged version



Dati tecnici Technical data	
Viscosità fluido Fluid viscosity	10-500 mm <sup>2</sup> /s 45 to 2000 ssu (6 to 420 cSt)
Classe di contaminazione Filtration	ISO code 16/13 SAE class 4 or better
Temperatura fluido Fluid temperature	-20°C +80°C -4°F +176°F
Temperatura ambiente Ambient temperature	-20°C +50°C -4°F +122°F



mm  
(Inches)



Codice ordinazione Ordering code			
VRDF-X-Y-K			
<b>X</b>	Dimensione / Size	<b>K</b>	O-Ring sul pistone di pilotaggio O-ring on pilot piston
380	BSPP 3/8		
120	BSPP 1/2		
<b>Y</b>	Molla / Spring	0	No o-ring
1	1 bar Standard	1	Con o-ring With o-ring
6	6 bar		

## Caratteristiche tecniche Technical performances

Codice Code	A	Portata Max Max flow l/min - USgpm	Pressione Max Max pressure bar/PSI	B	C	D	E	F	G	H	L	M	O-Ring	Peso approssimativo Approx weight Kg / lb	Rapporto di pilotaggio Pilot ratio
VRDF380	BSPP 3/8	35 (9)	210 (3000)	60 (2.36)	32 (1.26)	32 (1.26)	62 (2.44)	70 (2.76)	96 (3.78)	10 (0.39)	6.5 (0.26)	34 (1.34)	9.19 x 2.62	1,2 (2.6)	1:7
VRDF120	BSPP 1/2	50 (13)		70 (2.76)	38 (1.49)	34 (1.34)	65 (2.56)	80 (3.15)	110 (4.33)	14.5 (0.57)	8.5 (0.33)		15.54 x 2.62	1,32 (2.9)	1:3,2