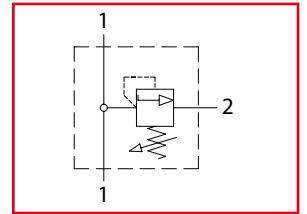


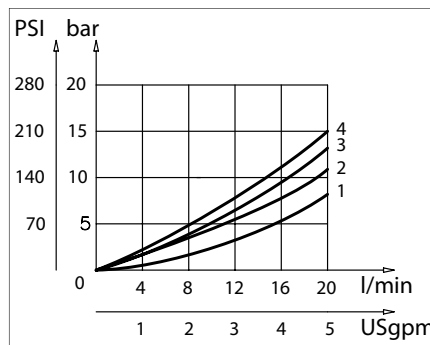
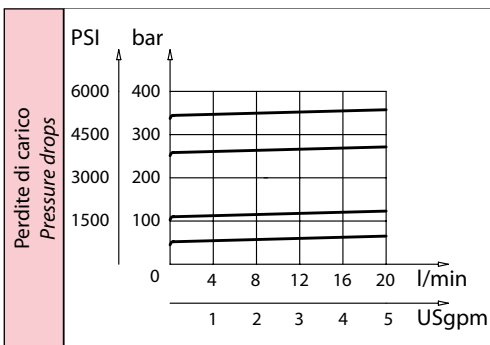
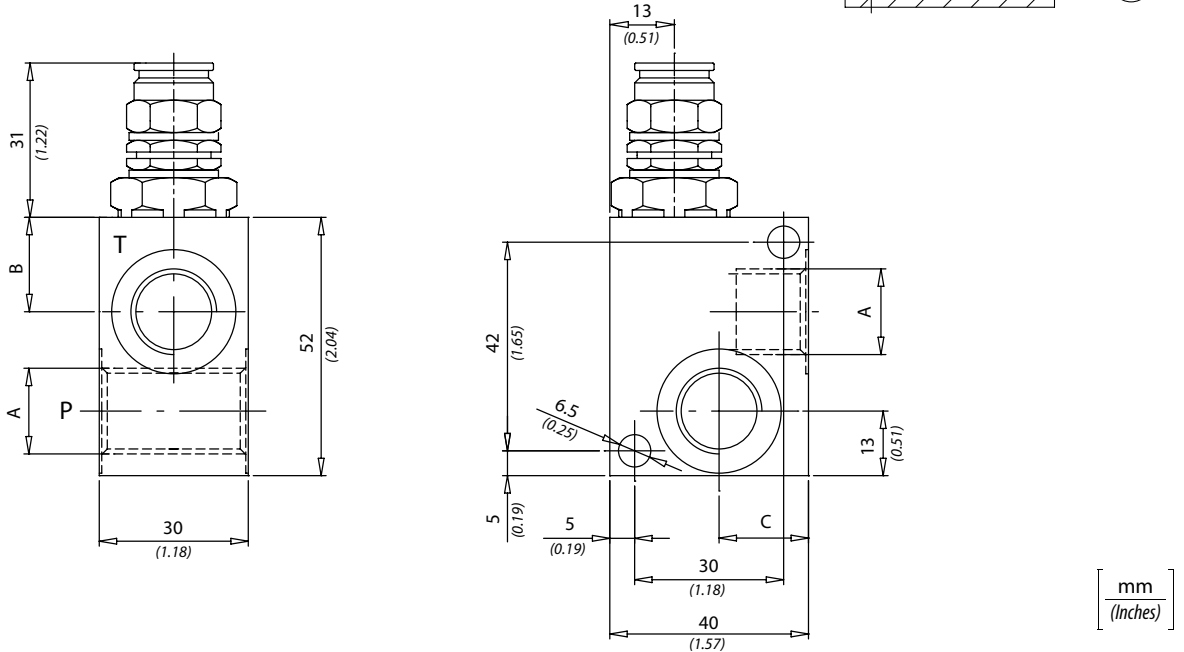
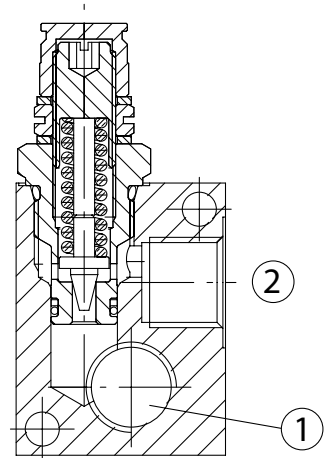


# VMDR1

Valvole di massima pressione in linea  
Direct acting relief valves



Dati tecnici Technical data	
Viscosità fluido Fluid viscosity	10-500 mm <sup>2</sup> /s 45 to 2000 ssu (6 to 420 cSt)
Classe di contaminazione Filtration	ISO code 16/13 SAE class 4 or better
Temperatura fluido Fluid temperature	-20°C +80°C -4°F +176°F
Temperatura ambiente Ambient temperature	-20°C +50°C -4°F +122°F



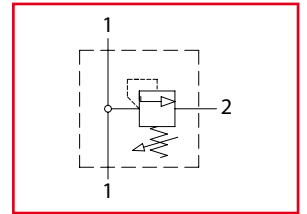
Caratteristiche tecniche Technical performances						
Code Code	A	Portata Max Max flow l/min - USgpm	Pressione Max Max pressure bar/PSI	B	C	Peso approssimativo Approx weight Kg / lb
VMDR1140	BSPP 1/4	20 (5)	350 (5000)	17 (0.67)	20 (0.78)	0,45 (0.99)
VMDR1380	BSPP 3/8			19 (0.75)	18 (0.71)	

Codice ordinazione Ordering code			
VMDR1 - X - Y - K			
X	Dimensione / Size	Y	Regolazione / Setting
140	BSPP 1/4	C	
380	BSPP 3/8		
K	Molla / Spring		
1	40 bar (600 PSI) max		
2	110 bar (1600 PSI) max		
3	250 bar (3600 PSI) max		
4	350 bar (5000 PSI) max		

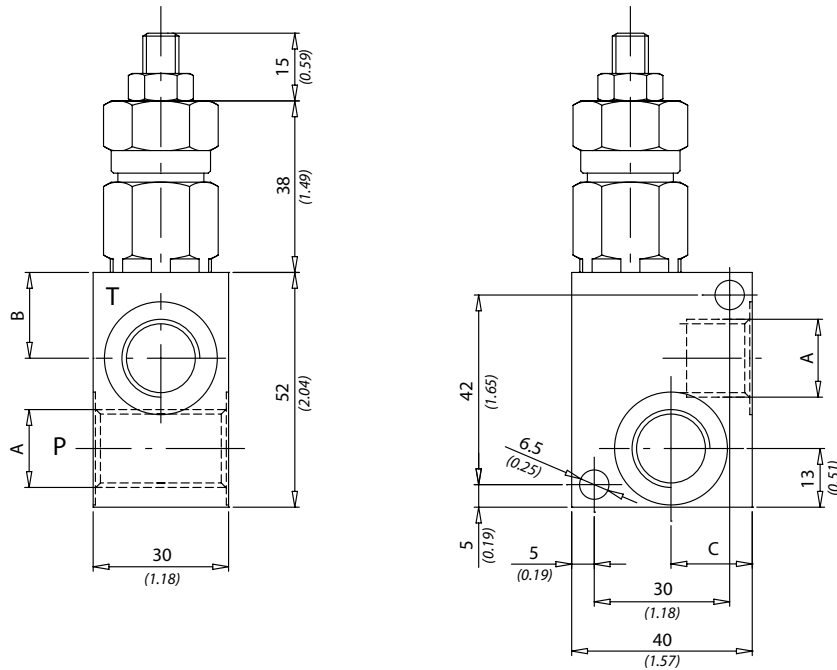
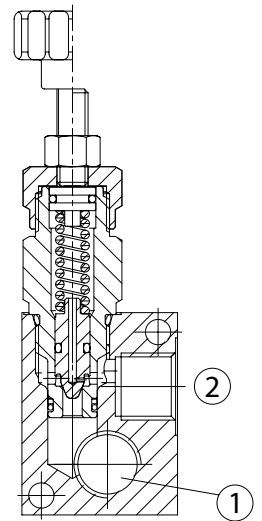


# VMDR10

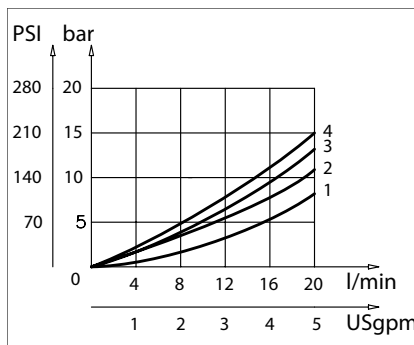
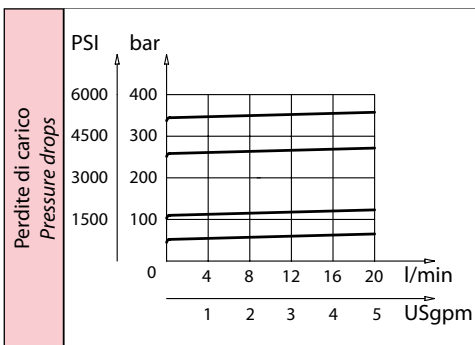
Valvole di massima pressione in linea  
Direct acting relief valves



Dati tecnici Technical data	
Viscosità fluido Fluid viscosity	10-500 mm <sup>2</sup> /s 45 to 2000 ssu (6 to 420 cSt)
Classe di contaminazione Filtration	ISO code 16/13 SAE class 4 or better
Temperatura fluido Fluid temperature	-20°C +80°C -4°F +176°F
Temperatura ambiente Ambient temperature	-20°C +50°C -4°F +122°F



[ mm  
(Inches)



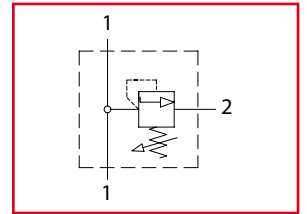
Caratteristiche tecniche Technical performances						
Codice Code	A	Portata Max Max flow l/min - USgpm	Pressione Max Max pressure bar/PSI	B	C	Peso approssimativo Approx weight Kg / lb
VMDR10140	BSPP1/4	20 (5)	350 (5000)	17 (0.67)	20 (0.79)	0,50 (1.1)
VMDR10380	BSPP 3/8			19 (0.75)	18 (0.71)	

Codice ordinazione Ordering code			
VMDR10 - X - Y - K			
X	Dimensione / Size	Y	Regolazione / Setting
140	BSPP 1/4	C	
380	BSPP 3/8		
K	Molla - Spring	V	
1	40 bar (600 PSI) max		
2	110 bar (1600 PSI) max		
3	250 bar (3600 PSI) max		
4	350 bar (5000 PSI) max	S	

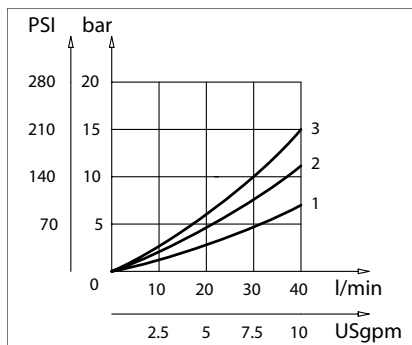
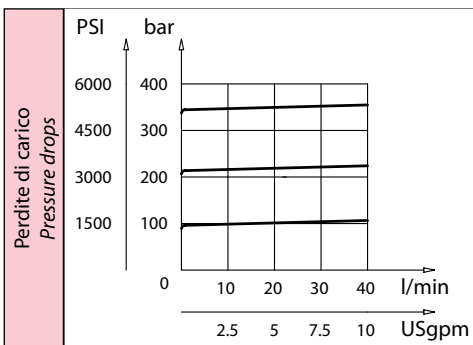
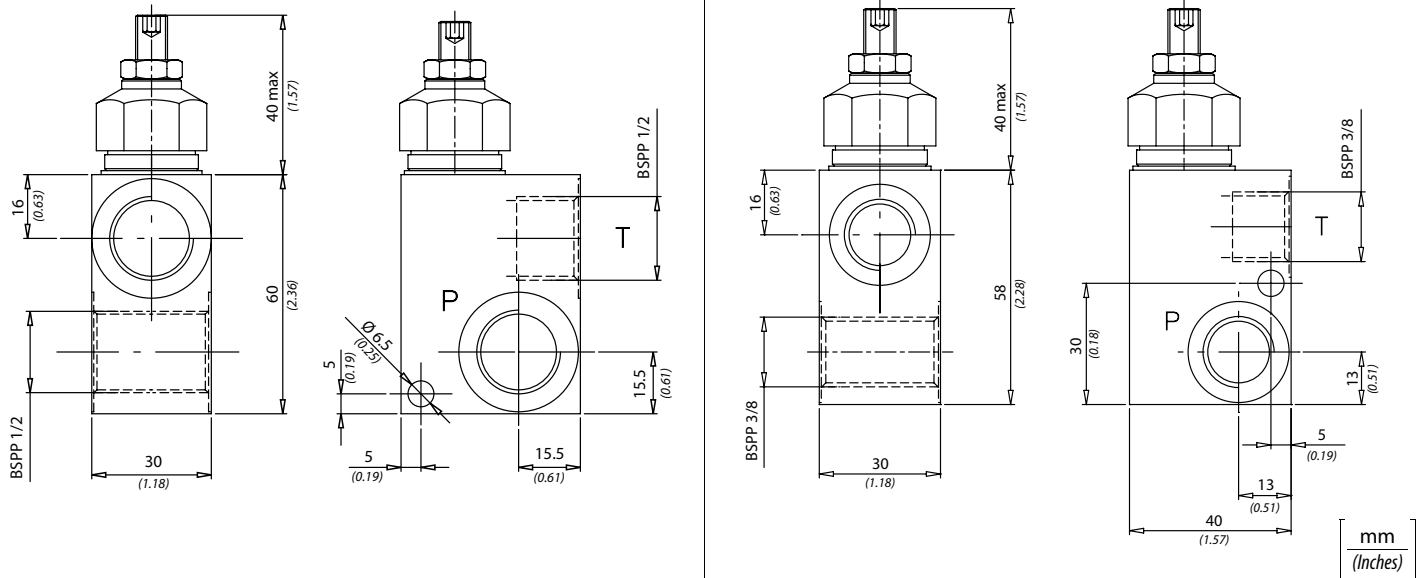
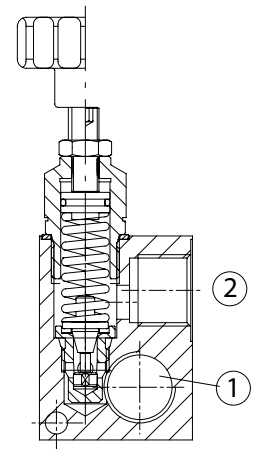


# VMDR40

Valvole di massima pressione in linea  
Direct acting relief valves



Dati tecnici Technical data	
Viscosità fluido Fluid viscosity	10-500 mm <sup>2</sup> /s 45 to 2000 ssu (6 to 420 cSt)
Classe di contaminazione Filtration	ISO code 16/13 SAE class 4 or better
Temperatura fluido Fluid temperature	-20°C +80°C -4°F +176°F
Temperatura ambiente Ambient temperature	-20°C +50°C -4°F +122°F



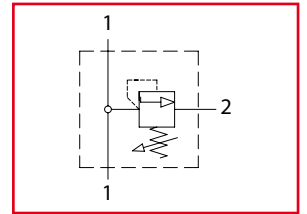
Caratteristiche tecniche Technical performances			
Codice Code	Portata Max Max flow l/min - USgpm	Pressione Max Max pressure bar/PSI	Peso approssimativo Approx weight Kg / lb
VMDR40380	40 (10)	300 (4350)	0,50 (1.1)
VMDR40120			0,53 (1.2)

Codice ordinazione Ordering code			
VMDR40 - X - Y - K			
X	Dimensione / Size	Y	Regolazione / Setting
380	BSPP 3/8	C	
120	BSPP 1/2		
K	Molla - Spring	V	
1	110 bar (1450 PSI) max		
2	210 bar (3000 PSI) max		
3	300 bar (4350 PSI) max	S	

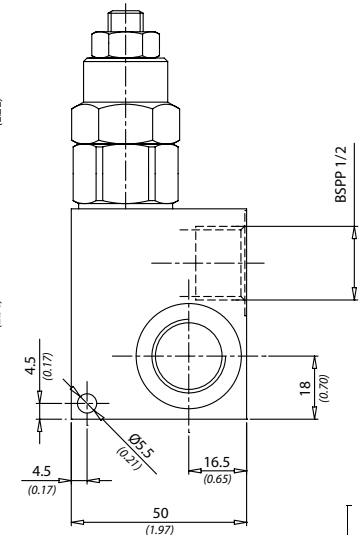
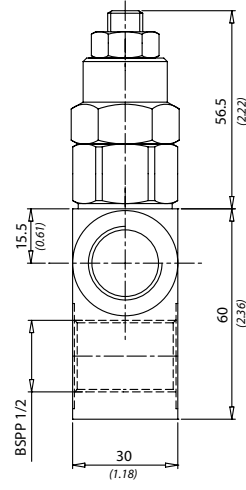
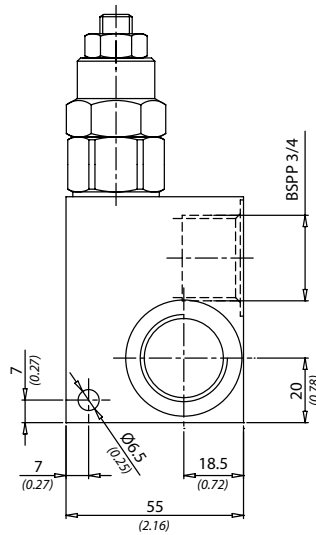
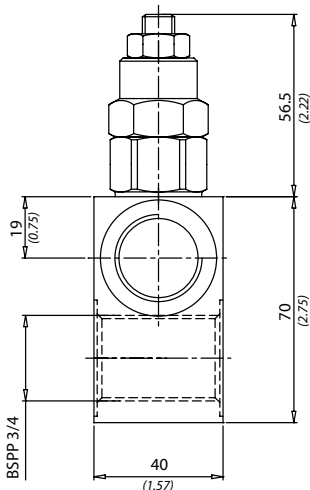
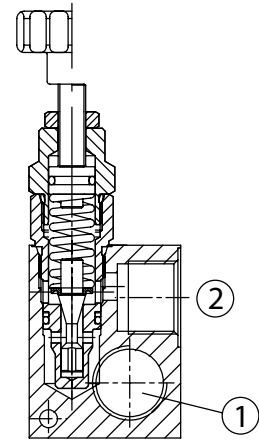


# VMDR90

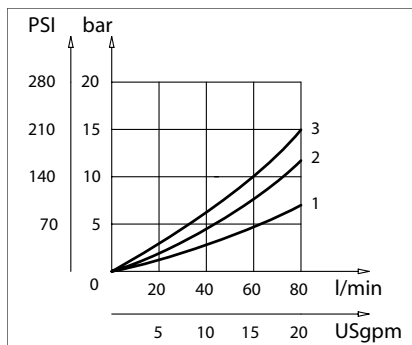
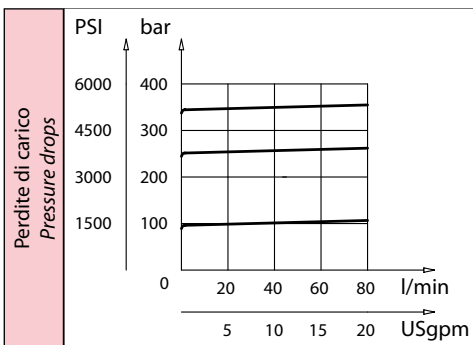
Valvole di massima pressione in linea  
Direct acting relief valves



Dati tecnici Technical data	
Viscosità fluido Fluid viscosity	10-500 mm <sup>2</sup> /s 45 to 2000 ssu (6 to 420 cSt)
Classe di contaminazione Filtration	ISO code 16/13 SAE class 4 or better
Temperatura fluido Fluid temperature	-20°C +80°C -4°F +176°F
Temperatura ambiente Ambient temperature	-20°C +50°C -4°F +122°F



mm  
(Inches)



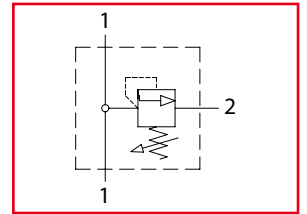
Caratteristiche tecniche Technical performances			
Codice Code	Portata Max Max flow l/min - USgpm	Pressione Max Max pressure bar/PSI	Peso approssimativo Approx weight Kg / lb
VMDR90120	80 (20)	350 (5000)	0,67 (1.5)
VMDR90340			1 (2.2)

Codice ordinazione Ordering code			
VMDR90 - X - Y - K			
X	Dimensione / Size	Y	Regolazione / Setting
120	BSPP 1/2	C	
340	BSPP 3/4		
K	Molla - Spring		
1	100 bar (1450 PSI) max	V	
2	250 bar (3500 PSI) max		
3	350 bar (5000 PSI) max		
S			

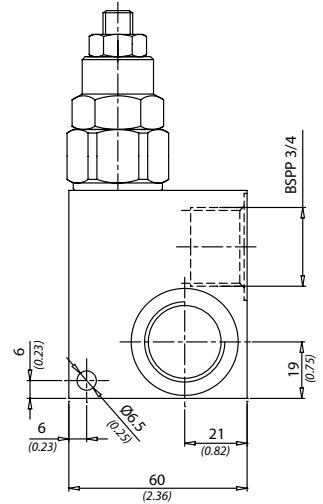
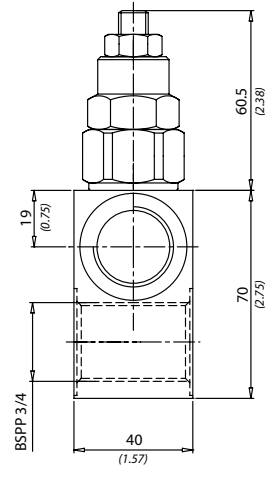
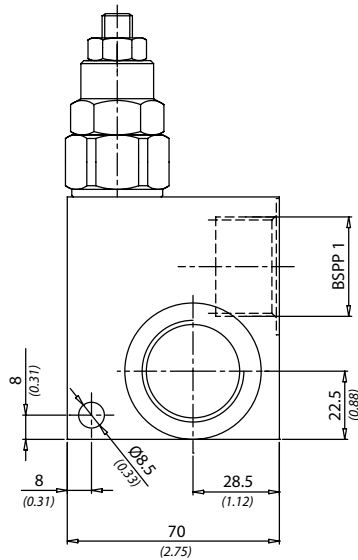
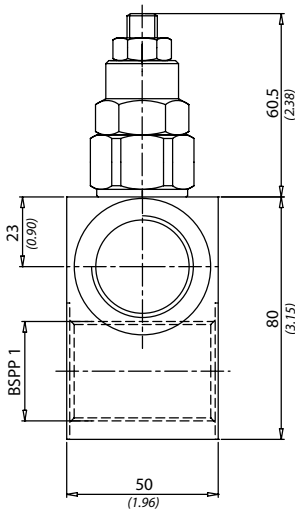
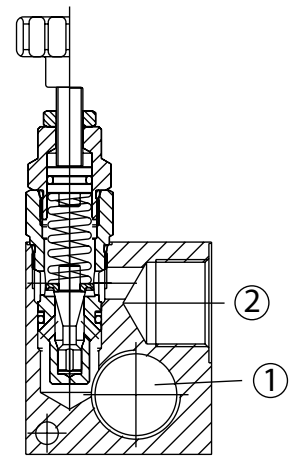


# VMDR120

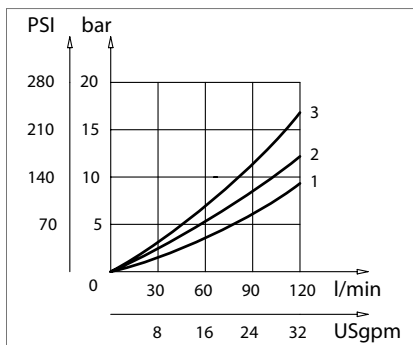
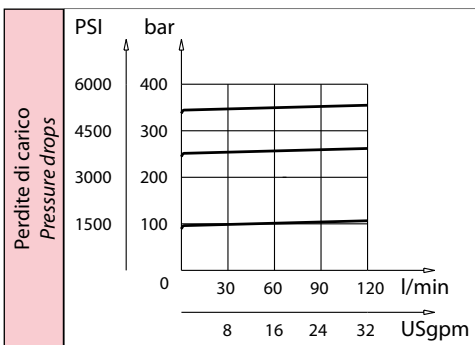
Valvole di massima pressione in linea  
Direct acting relief valves



Dati tecnici Technical data	
Viscosità fluido Fluid viscosity	10-500 mm <sup>2</sup> /s 45 to 2000 ssu (6 to 420 cSt)
Classe di contaminazione Filtration	ISO code 16/13 SAE class 4 or better
Temperatura fluido Fluid temperature	-20°C +80°C -4°F +176°F
Temperatura ambiente Ambient temperature	-20°C +50°C -4°F +122°F



mm  
(Inches)



Caratteristiche tecniche Technical performances			
Codice Code	Portata Max Max flow l/min - USgpm	Pressione Max Max pressure bar/PSI	Peso approssimativo Approx weight Kg / lb
VMDR120340	120 (30)	350 (5000)	1,1 (2.42)
VMDR120100			1,72 (3.8)

Codice ordinazione Ordering code			
<b>VMDR120 - X - Y - K</b>			
X	Dimensione / Size	Y	Regolazione / Setting
340	BSPP 3/4	C	
100	BSPP 1		
K	Molla - Spring	V	
1	100 bar (1450 PSI) max		
2	250 bar (3500 PSI) max		
3	350 bar (5000 PSI) max	S	