
ITALGROUP-ADVANCED-MOTORS

IAM SERIES

H6 MODEL

***IAM 2200-2500-2800
3000-3200-3500 H6***

***IAM 2200-2500-2800
3000-3200-3500/C H6***

***IAM 2200/B125
2500/B150
3000/B200***

INDEX

TECHNICAL DATA - - - - -	<i>Pag.</i>	88
IAM H6 2200-2500-2800-3000-3200-3500 - - - - -	"	89
IAM H6 2200-2500-2800-3000-3200-3500/C - - - - -	"	90
IAM H6 2200/B125 2500/B150 3000/B200 - - - - -	"	91
ORDERING INSTRUCTIONS - - - - -	"	92
GRAPHIC PERFORMANCES H6 2200-2500-2800-3000 - - - - -	"	93
GRAPHIC PERFORMANCES H6 3200-3500 - - - - -	"	94

TECHNICAL DATA

H6

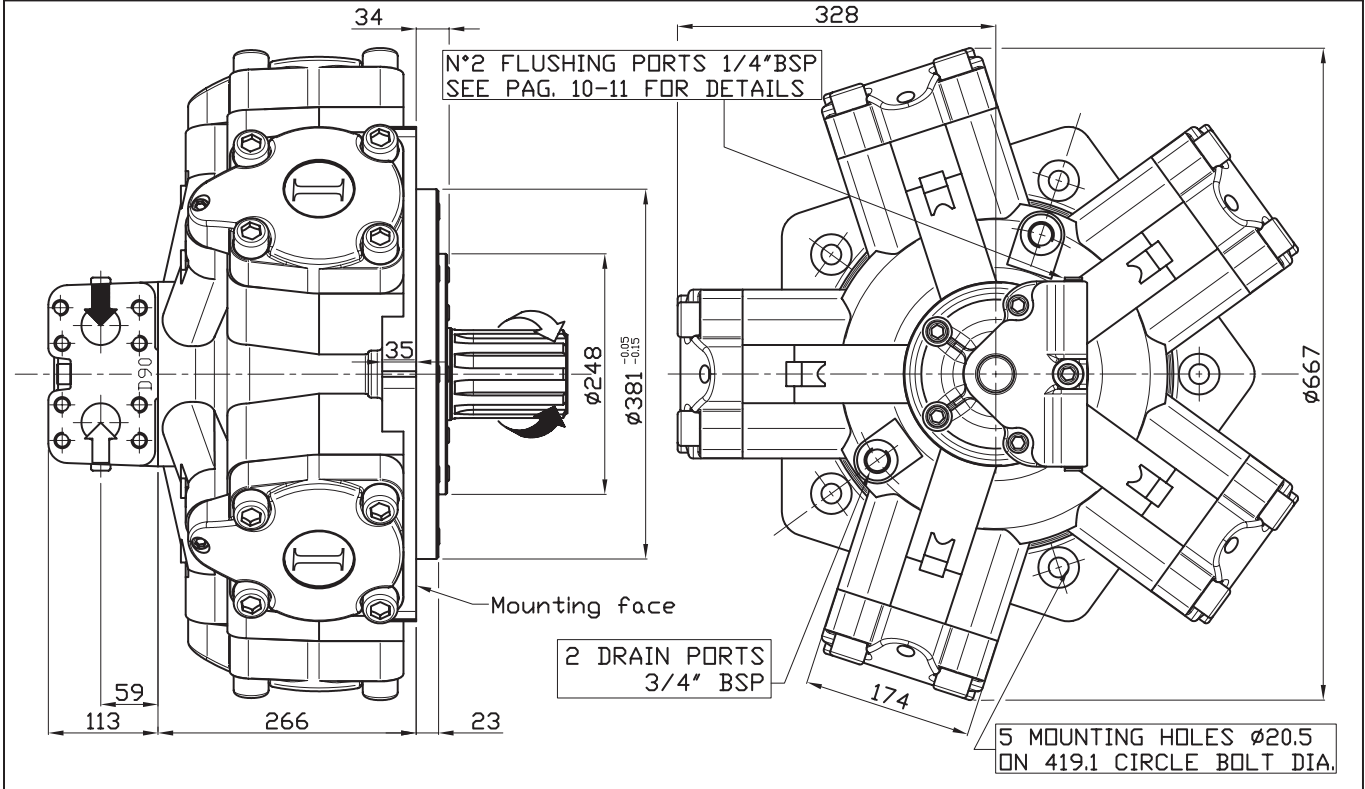
	MODEL	IAM 2200 H6	IAM 2500 H6	IAM 2800 H6	IAM 3000 H6	IAM 3200 H6	IAM 3500 H6
Displacement	cc/rev	2206	2525	2807	2983	3289	3479
Specific Torque	Nm/bar	35.1	40.2	44.7	47.5	52.3	55.4
Max cont. Pressure	bar	250	250	250	250	250	250
Max int. Pressure	bar	300	300	300	300	300	300
Peak pressure	bar	350	350	350	350	350	350
Max continuous speed	rpm	220	220	220	210	200	200
Peak speed	rpm	260	260	260	250	240	240
Max continuous power	HP	163	163	163	163	163	163
	kW	120	120	120	120	120	120
Max power	HP	228	228	228	228	228	228
	kW	170	170	170	170	170	170

- N° of pistons: 5
- Max case pressure: 6 bar
- Max back pressure: 70 bar
- Dry weight: 308 kg
- Temperature range: -30°C ÷ +70°C
- Minimum speed: 0.5 rpm
- Flushing flow: 15 l/min

(*)for further details regarding flushing go to page 10 of this catalogue.

SIZE

IAM 2200-2500-2800-3000-3200-3500 H6



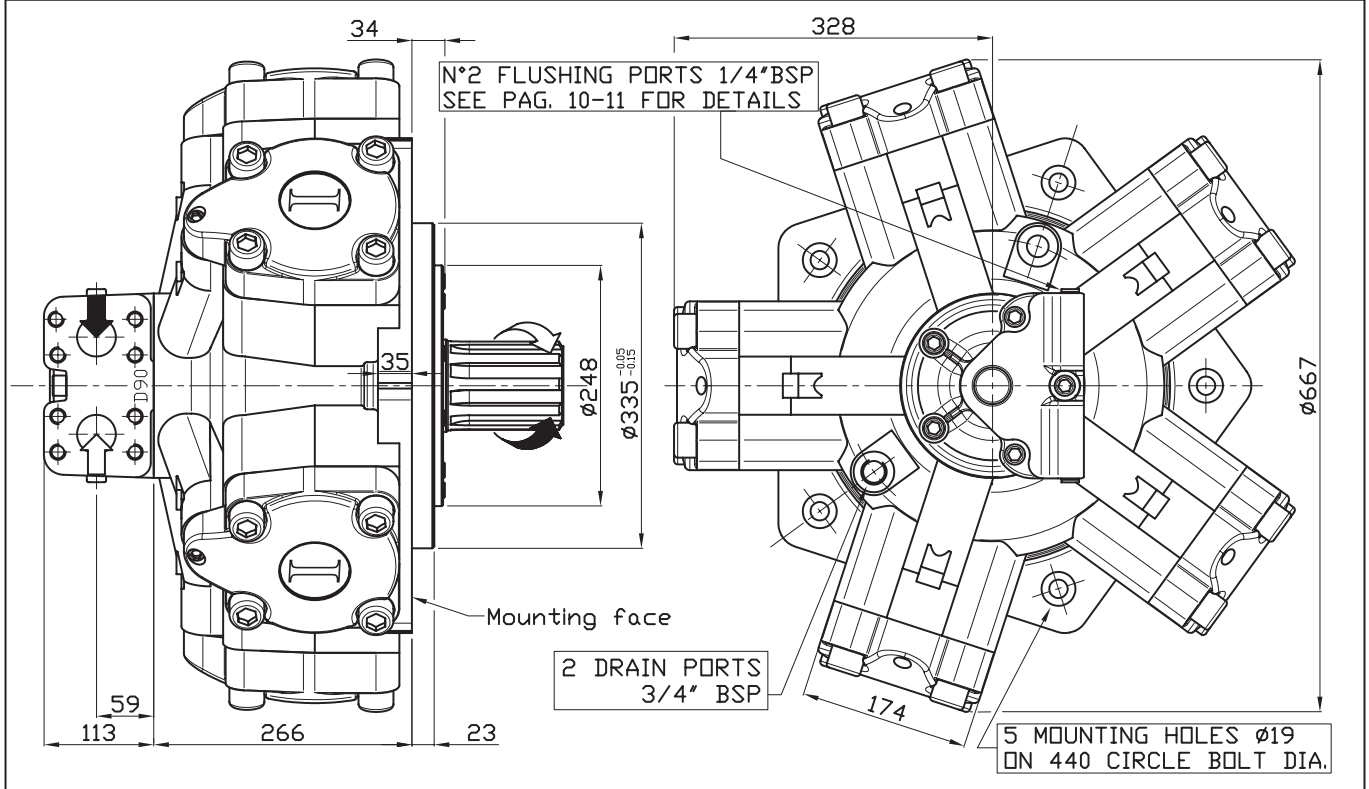
SHAFT

IAM 2200-2500-2800-3000-3200-3500 H6

A0: Standard splined shaft	A1: Splined shaft on request
<p>Technical drawing of standard splined shaft A0. Dimensions: 156 (total length), 120 (splined length), 97 (splined length), M20x35 (thread), 92x82x12 (splined length), UNI221 Z=10 (splined length).</p>	<p>Technical drawing of splined shaft on request A1. Dimensions: 133 (total length), 97 (splined length), 76 (splined length), 3/4"-16 UNF-2B (thread), BS-3550 1963 ASA.B.5.15 1960 PITCH 6/12 Z=20 (splined length).</p>
A2: Parallel shaft on request	
<p>Technical drawing of parallel shaft on request A2. Dimensions: 89.4 (total length), 131 (splined length), 120 (splined length), 24 (splined length), 3/4"-16 UNF-2B (thread), 85±0.01 (splined length), 166 (total length).</p>	

SIZE

IAM 2200/C-2500/C-2800/C-3000/C-3200/C-3500/C H6



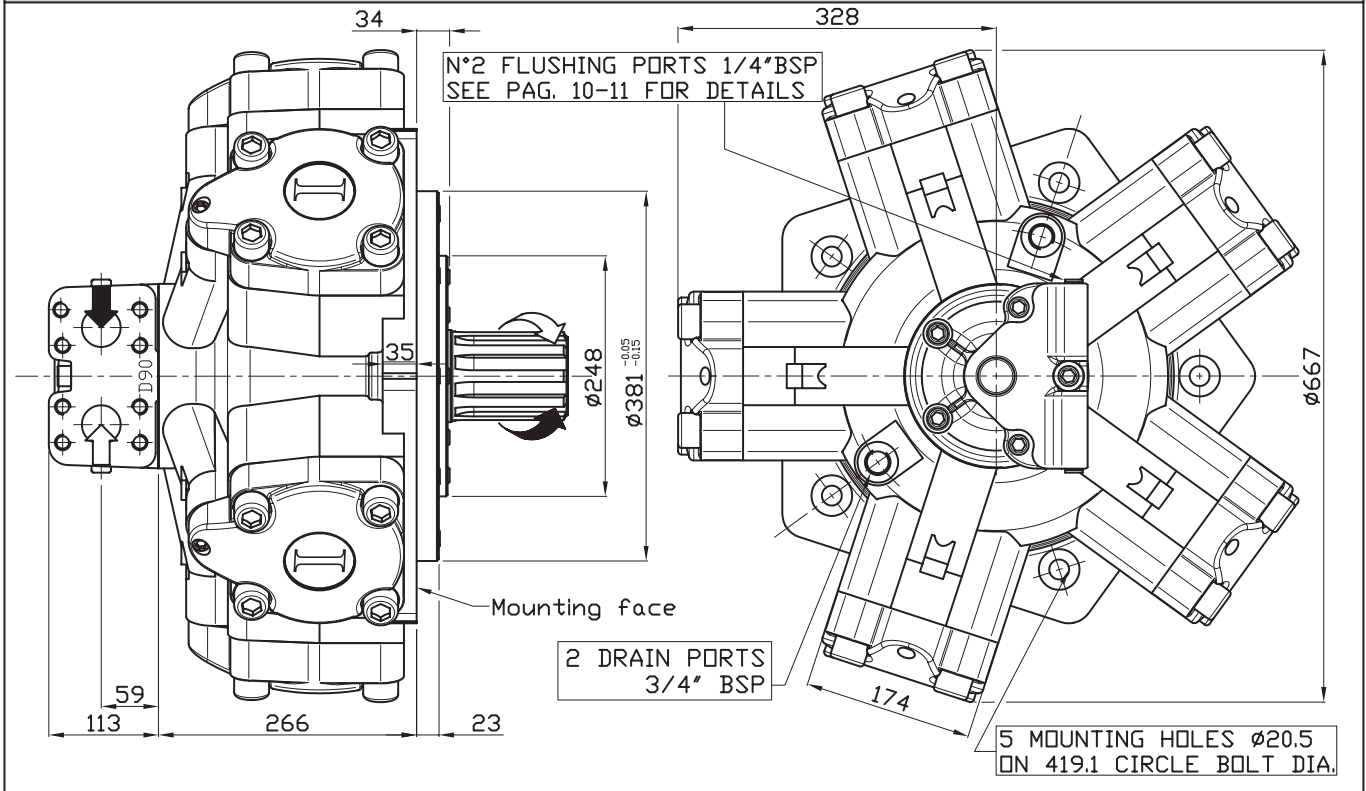
SHAFT

IAM 2200/C-2500/C-2800/C-3000/C-3200/C-3500/C H6

A0: Standard splined shaft	A1: Splined shaft on request
<p>Technical drawing of a standard splined shaft (A0). Dimensions include a total length of 156, a splined length of 120, and a distance of 97 from the mounting face to the start of the splines. The shaft has an M20x35 thread and 92x82x12 UNI221 Z=10 splines.</p>	<p>Technical drawing of a splined shaft on request (A1). Dimensions include a total length of 133, a distance of 97 from the mounting face to the start of the splines, and a distance of 76 from the mounting face to the end of the splines. The shaft has a 3/4"-16 UNF-2B thread and BS 3550, 1963 ASA B.5.15 1960 PITCH 6/12 Z=20 splines.</p>
A2: Parallel shaft on request	A3: Female shaft on request
<p>Technical drawing of a parallel shaft on request (A2). Dimensions include a total length of 153, a distance of 120 from the mounting face to the end of the splines, a distance of 110 from the mounting face to the start of the splines, and a distance of 25 from the mounting face to the end of the splines. The shaft has an M20x35 thread and a diameter of $\varnothing 90 \pm 0.01$.</p>	<p>Technical drawing of a female shaft on request (A3). Dimensions include a distance of 14 from the mounting face to the end of the splines, a distance of 10 from the mounting face to the start of the splines, a distance of 48 from the mounting face to the end of the splines, and a distance of 60 from the mounting face to the start of the splines. The shaft has an N85x3x27-9H DIN 5480 thread and a diameter of $\varnothing 105$.</p>

SIZE

IAM 2200/B125-2500/B150-3000/B200 H6

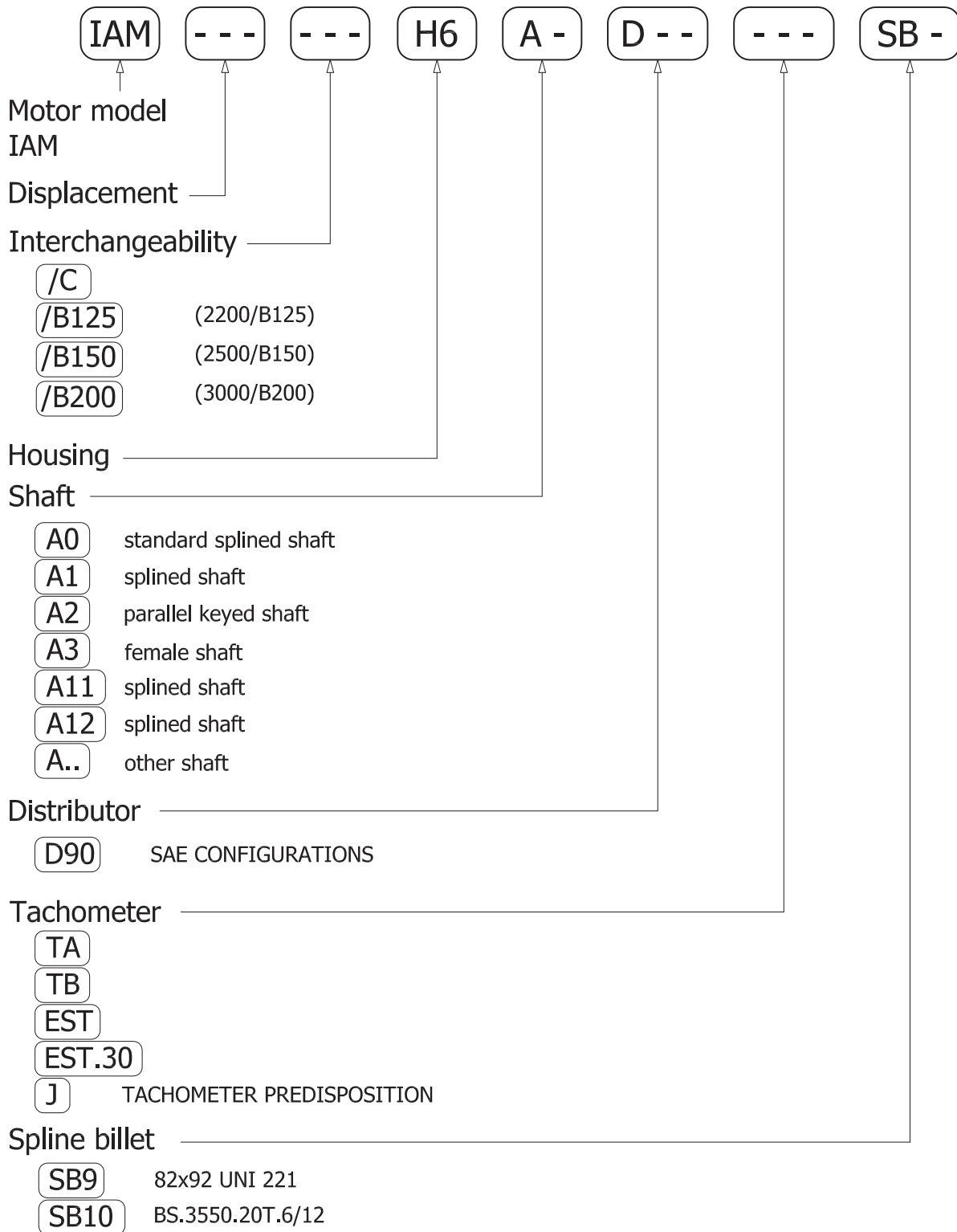


SHAFT

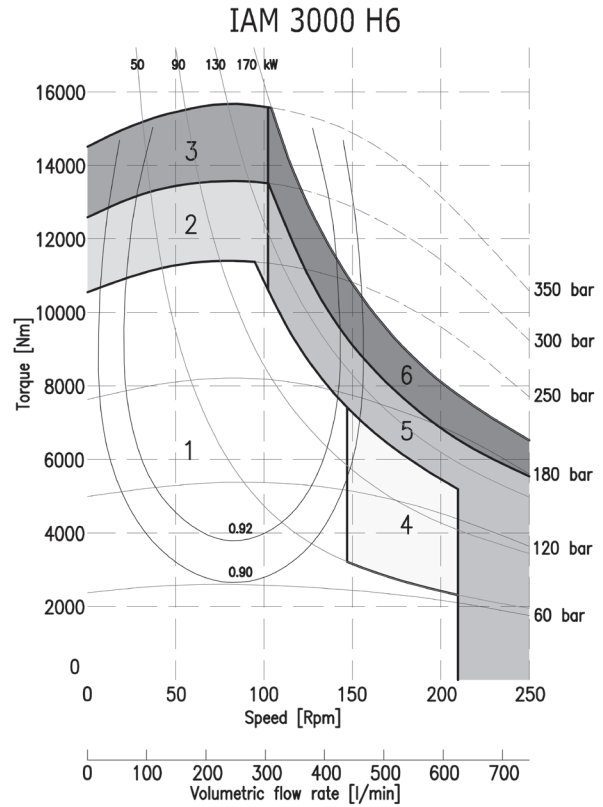
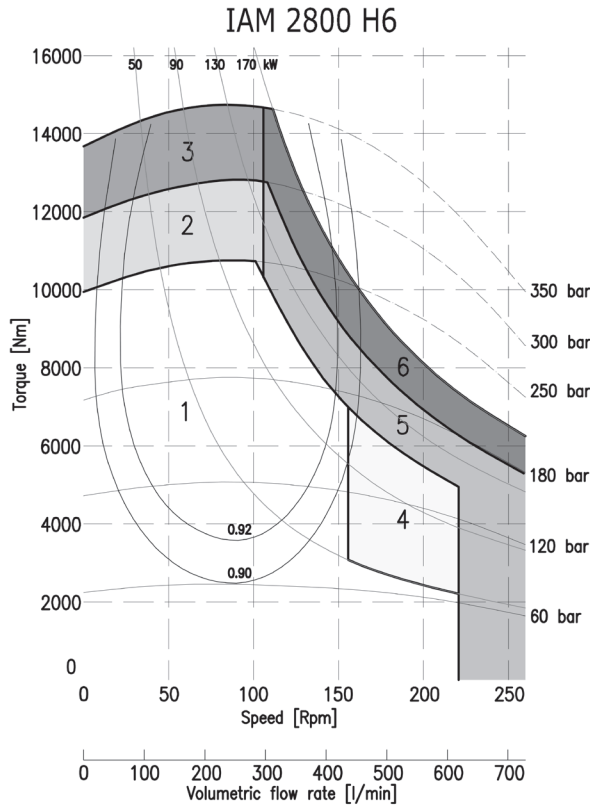
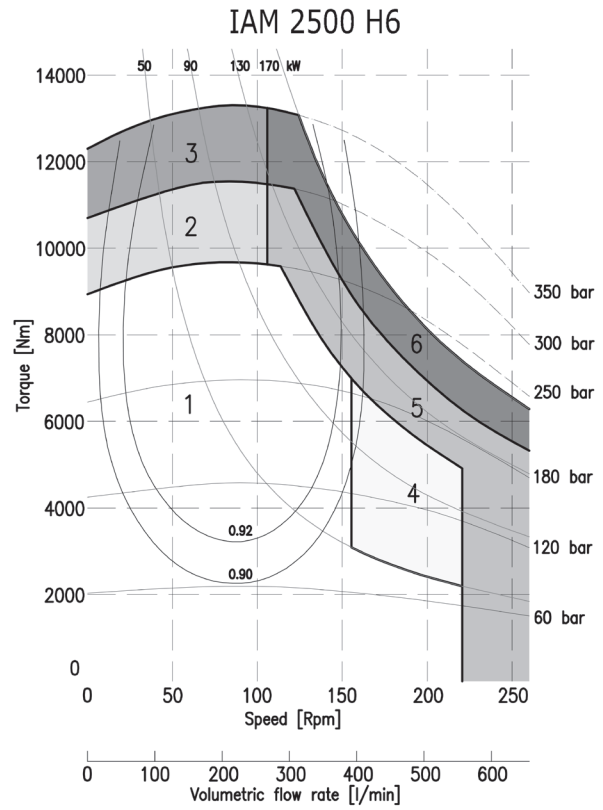
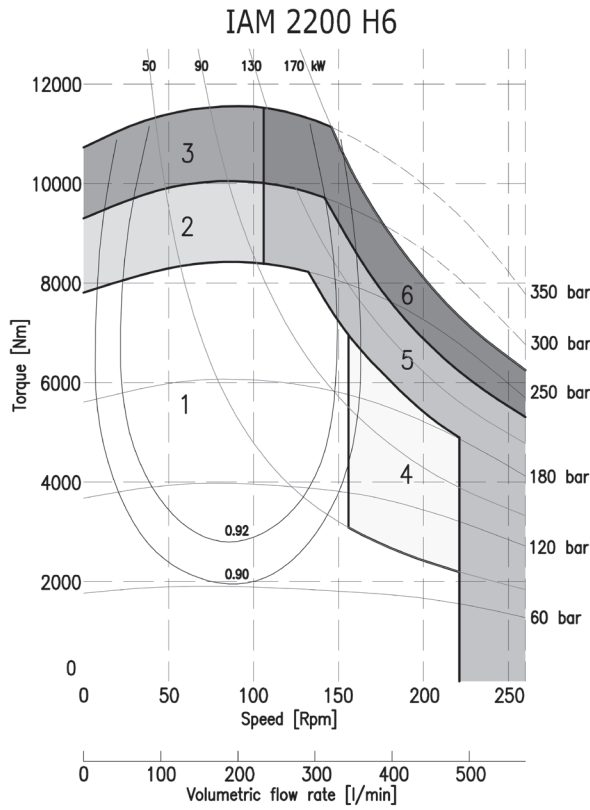
IAM 2200/B125-2500/B150-3000/B200 H6

<p>A0: Standard splined shaft</p>	<p>A1: Splined Shaft on request</p>
	<p>A11: Splined Shaft on request</p>
<p>A2: Parallel shaft on request</p>	<p>A12: Splined Shaft on request</p>

ORDERING INSTRUCTIONS

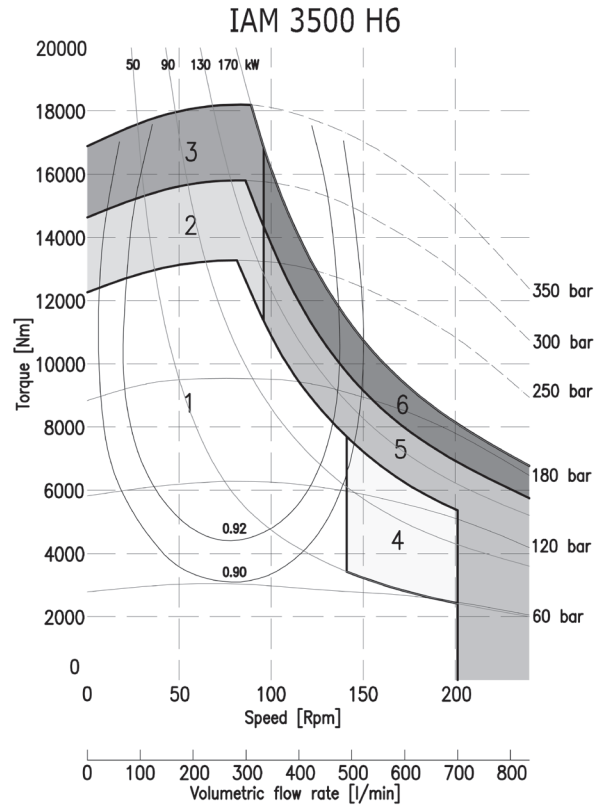
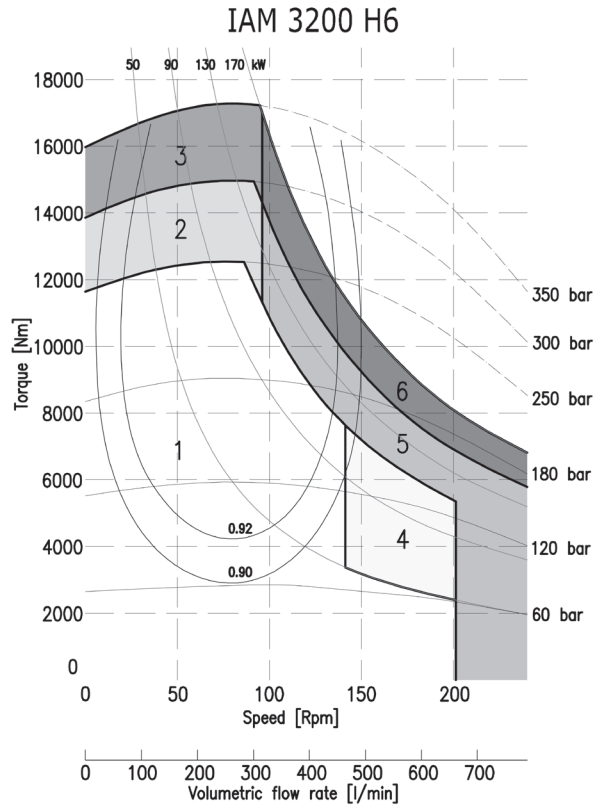


EXAMPLE: IAM.2500.H6.A1.D90
 IAM.2800.H6.A0.D90.TA.SB9
 IAM.2500/C.H6.A2.D90.J



1	Continuous operation
2	Intermittent operation for period 3-5 minutes every 10-15 minutes
3	Intermittent operation for very short period (3-5 seconds every 10-15 minutes)

4	Continuous operation with flushing
5	Intermittent operation for period 3-5 minutes every 10-15 minutes with flushing
6	Intermittent operation for very short period (3-5 seconds every 10-15 minutes) with flushing



1	Continuous operation
2	Intermittent operation for period 3-5 minutes every 10-15 minutes
3	Intermittent operation for very short period (3-5 seconds every 10-15 minutes)

4	Continuous operation with flushing
5	Intermittent operation for period 3-5 minutes every 10-15 minutes with flushing
6	Intermittent operation for very short period (3-5 seconds every 10-15 minutes) with flushing