
ITALGROUP - ADVANCED - MOTORS

IAM SERIES

H4 MODEL

***IAM 700-800-850-900
1000-1100-1200
1250-1400 H4***

IAM 700/C-800/C H4

IAM 800/B45 H4

***IAM 700-800-900
1000-1100-1250/S H4***

***IAM 700-800-900
1000-1100-1250/GM4 H4***

INDEX

TECHNICAL DATA - - - - -	<i>Pag.</i>	54
IAM H4 700-800-850-900-1000-1100-1200-1250-1400 - - - - -	"	55
IAM H4 700/C-800/C - - - - -	"	56
IAM H4 800/B45 - - - - -	"	57
IAM H4 700-800-900-1000-1100-1250/S - - - - -	"	58
IAM H4 700-800-900-1000-1100-1250/GM4- - - - -	"	59
ORDERING INSTRUCTIONS - - - - -	"	60
GRAPHIC PERFORMANCES H4 700-800-850-900 - - - - -	"	61
GRAPHIC PERFORMANCES H4 1000-1100-1200-1250 - - - - -	"	62
GRAPHIC PERFORMANCES H4 1400 - - - - -	"	63

TECHNICAL DATA

H4

MODEL		IAM 700 H4	IAM 800 H4	IAM 850 H4	IAM 900 H4	IAM 1000 H4	IAM 1100 H4	IAM 1200 H4	IAM 1250 H4	IAM 1400 H4
Displacement	cc/rev	714	792	847	904	992	1116	1192	1247	1332
Specific Torque	Nm/bar	11.4	12.6	13.5	14.4	15.8	17.8	19.0	19.8	21.2
Max cont. Pressure	bar	250	250	250	250	250	250	250	250	250
Max int. Pressure	bar	300	300	300	300	300	300	300	300	300
Peak pressure	bar	350	350	350	350	350	350	350	350	350
Max continuous speed	rpm	500	450	450	450	330	330	300	250	200
Peak speed	rpm	580	530	530	530	400	400	350	300	250
Max continuous power	HP	75	75	75	75	75	75	75	75	75
	kW	55	55	55	55	55	55	55	55	55
Max power	HP	107	107	107	107	107	107	107	107	107
	kW	80	80	80	80	80	80	80	80	80

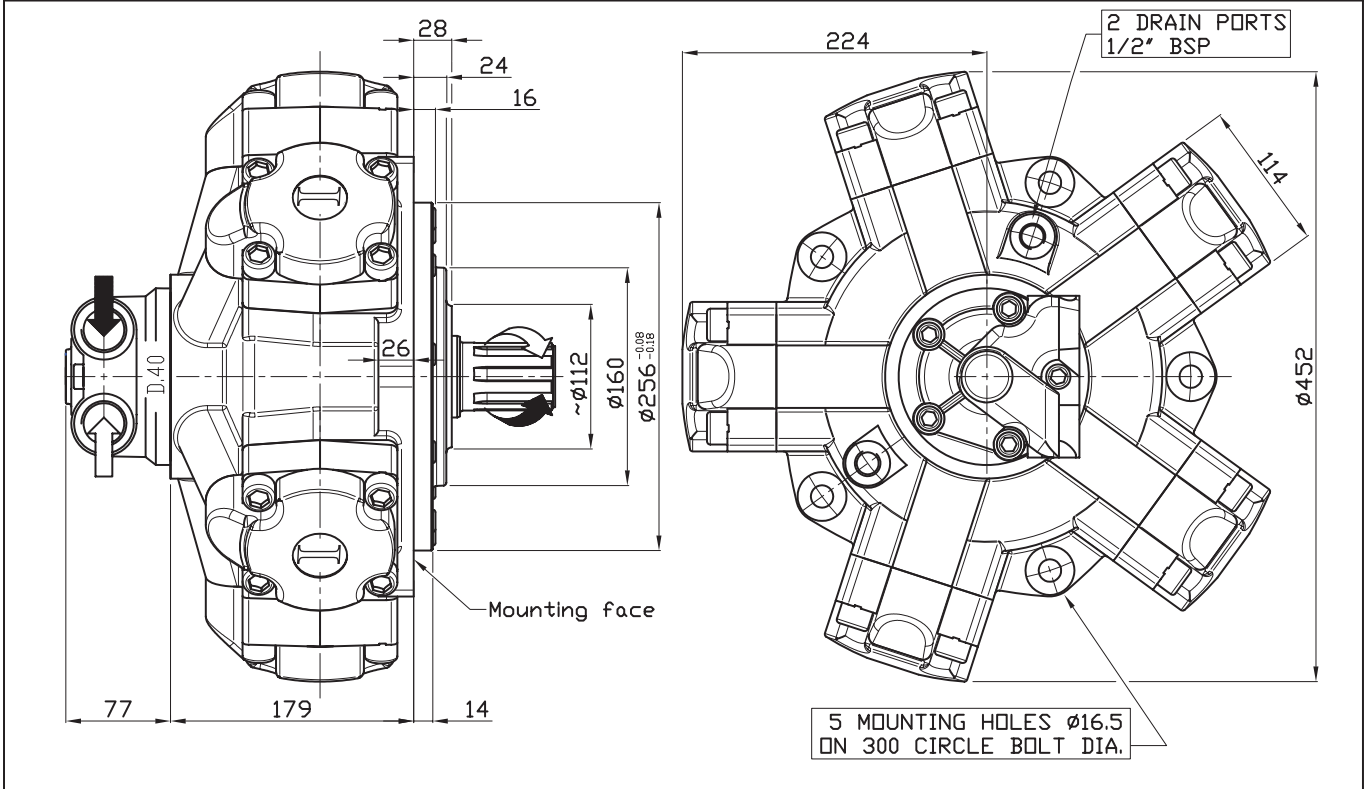
- N° of pistons: 5
- Max case pressure: 6 bar
- Max back pressure: 70 bar
- Dry weight: 92 kg
- Temperature range: -30°C ÷ +70°C
- Minimum speed: 1 rpm
- Flushing flow^(*):

IAM H4 700 – 800 – 850 – 900	10 l/min
IAM H4 1000 – 1100 – 1200 – 1250	10 l/min

(*)for further details regarding flushing go to page 10 of this catalogue.

SIZE

IAM 700-800-850-900-1000-1100-1200-1250-1400 H4



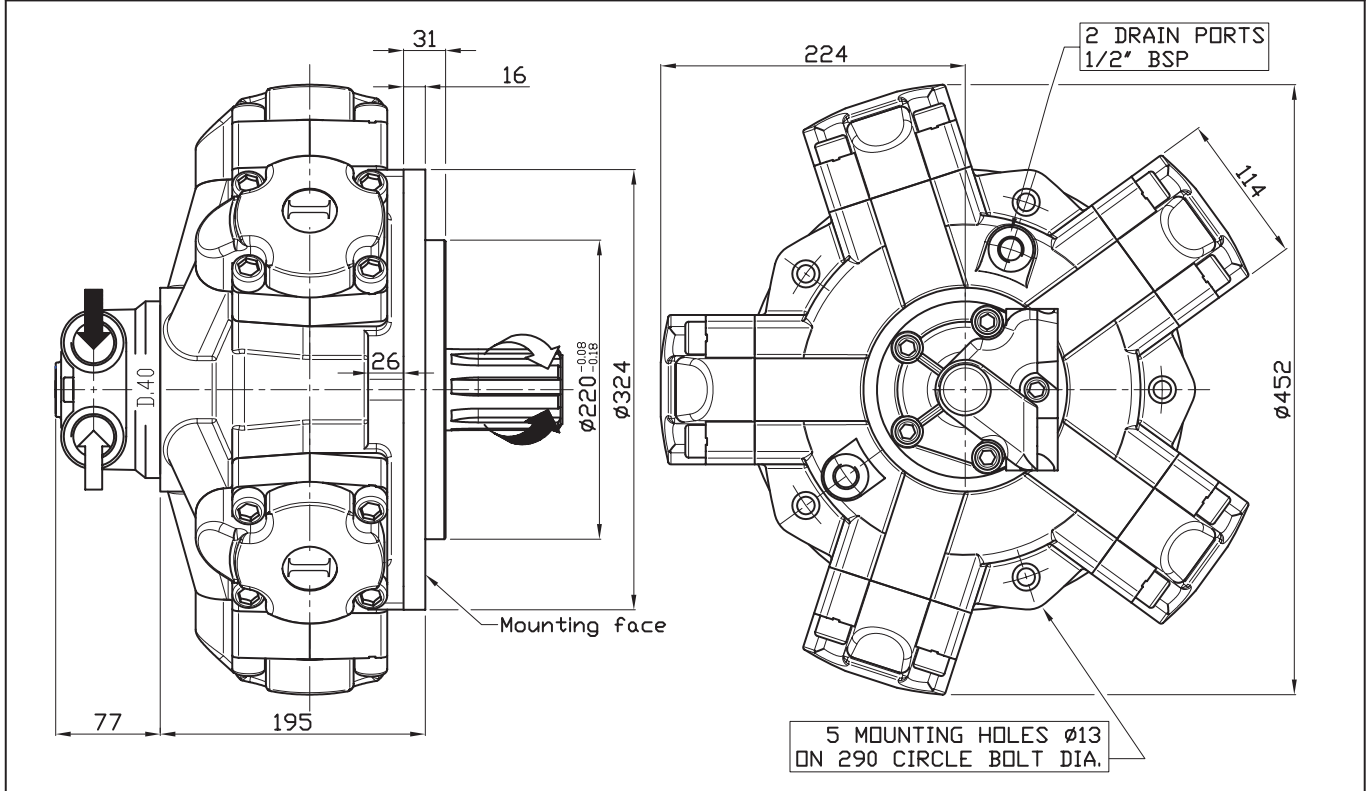
SHAFT

IAM 700-800-850-900-1000-1100-1200-1250-1400 H4

A0: Standard splined shaft	A1: Splined shaft on request
A2: Parallel shaft on request	A3: Female shaft on request

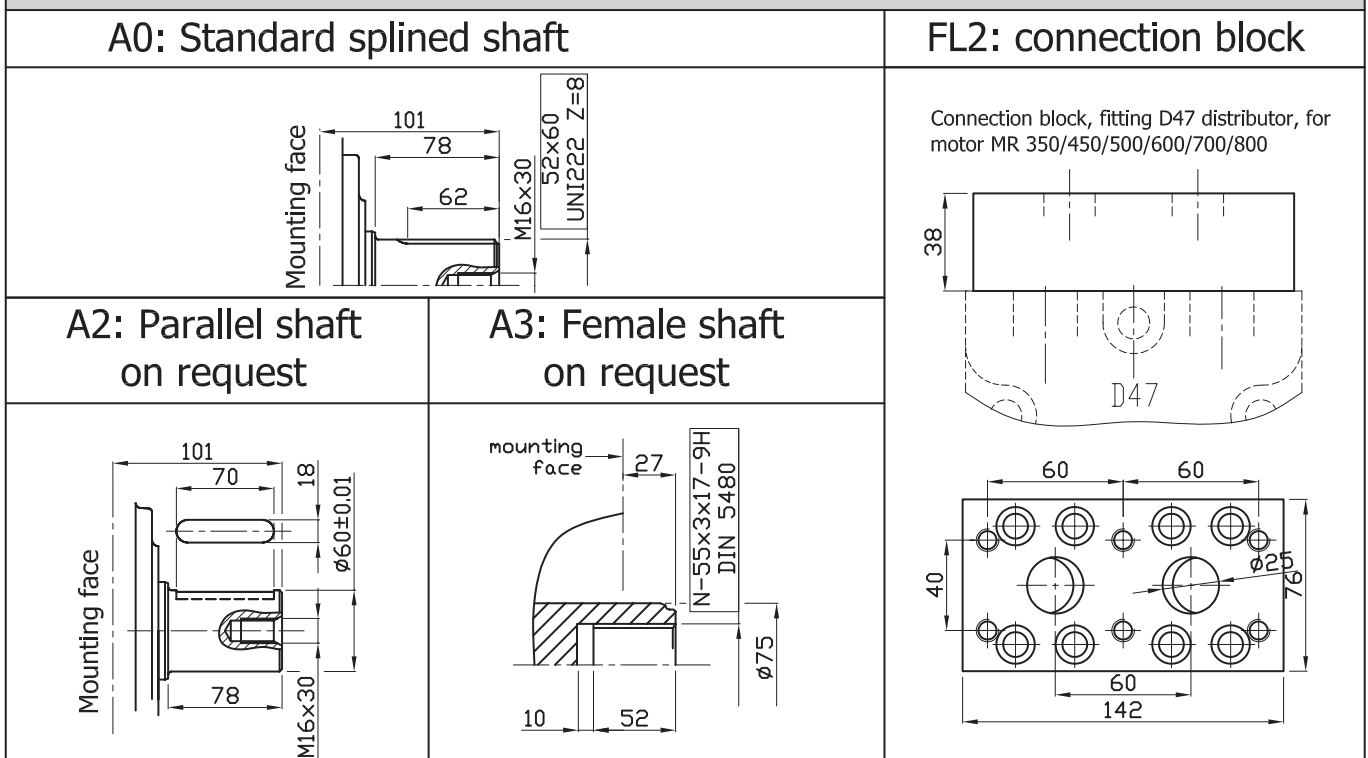
SIZE

IAM 700/C-800/C H4



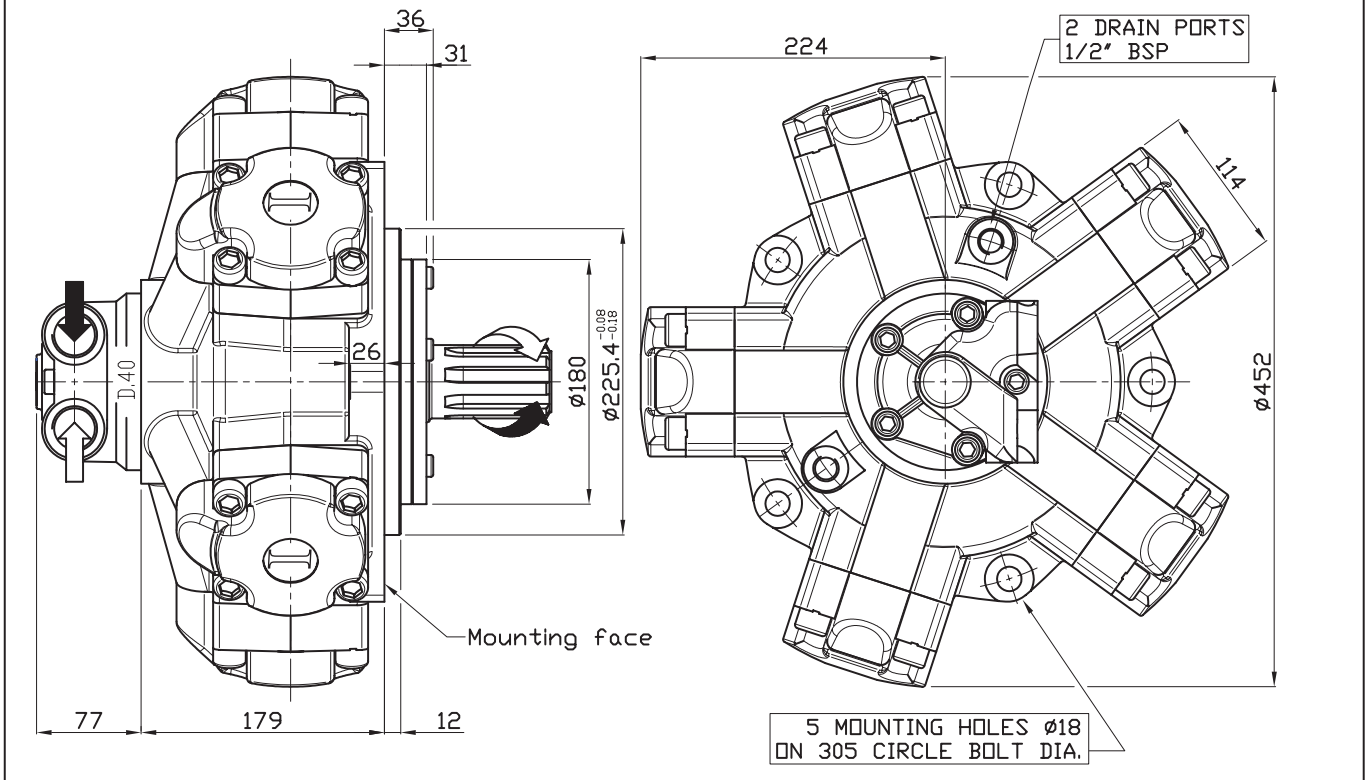
SHAFT & OPTION

IAM 700/C-800/C H4



SIZE

IAM 800/B45 H4



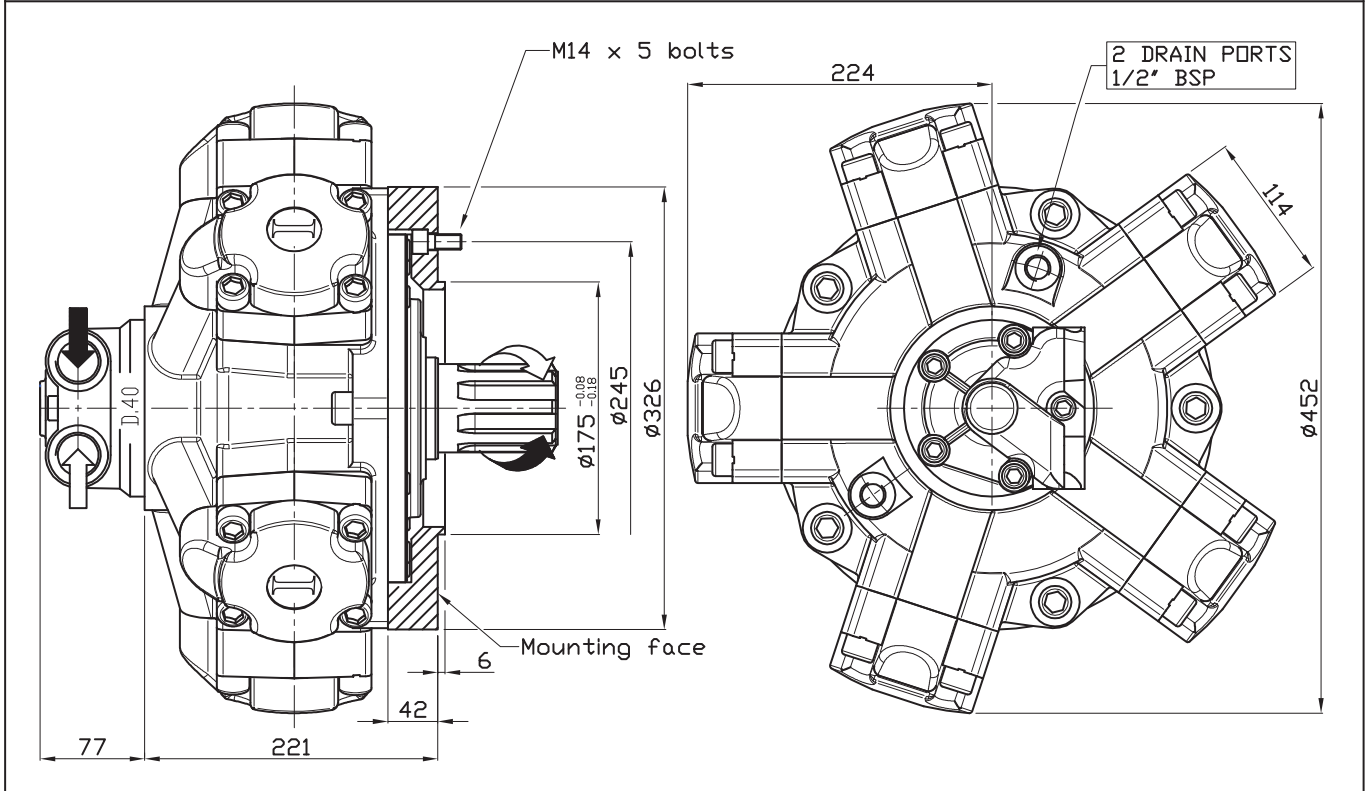
SHAFT

IAM 800/B45 H4

A0: Standard splined shaft	A1: Splined shaft on request
<p>Technical drawing of a standard splined shaft (A0). Dimensions include a total length of 124, a splined length of 90, and a distance of 65 from the mounting face to the start of the splines. The shaft has an M16x30 thread and 54x46 UNI221 Z=8 splines.</p>	<p>Technical drawing of a splined shaft on request (A1). Dimensions include a total length of 142, a splined length of 100, and a distance of 71 from the mounting face to the start of the splines. The shaft has a 1/2"-20 UNF 2B thread, a 32 mm depth, BS 3550-1963 splines, and a P 8/16 - 17 profile.</p>
A2: Parallel shaft on request	A4: Splined shaft on request
<p>Technical drawing of a parallel shaft on request (A2). Dimensions include a total length of 134, a splined length of 88, and a distance of 14 from the mounting face to the start of the splines. The shaft has an M16x30 thread and a diameter of $\phi 55 \pm 0.01$.</p>	<p>Technical drawing of a splined shaft on request (A4). Dimensions include a total length of 142, a splined length of 100, and a distance of 71 from the mounting face to the start of the splines. The shaft has a 1/2"-20 UNF 2B thread, a 32 mm depth, W 55x3x17-7h splines, and a DIN 5480 profile.</p>

SIZE

IAM 700/S 800/S 900/S 1000/S 1100/S 1250/S H4

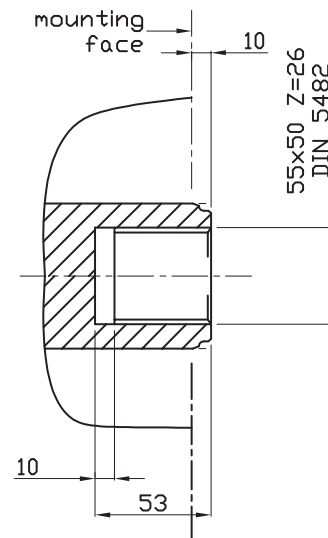
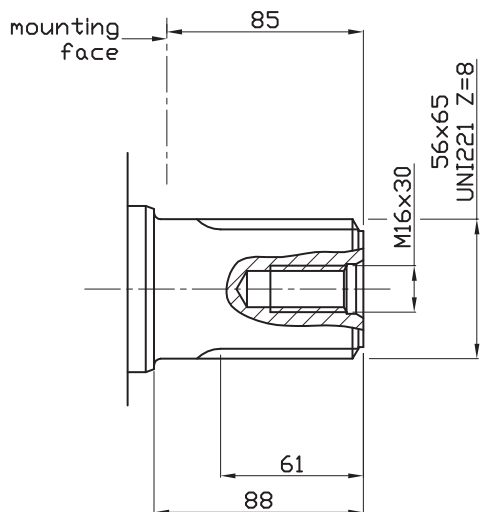


SHAFT

IAM 700/S 800/S 900/S 1000/S 1100/S 1250/S H4

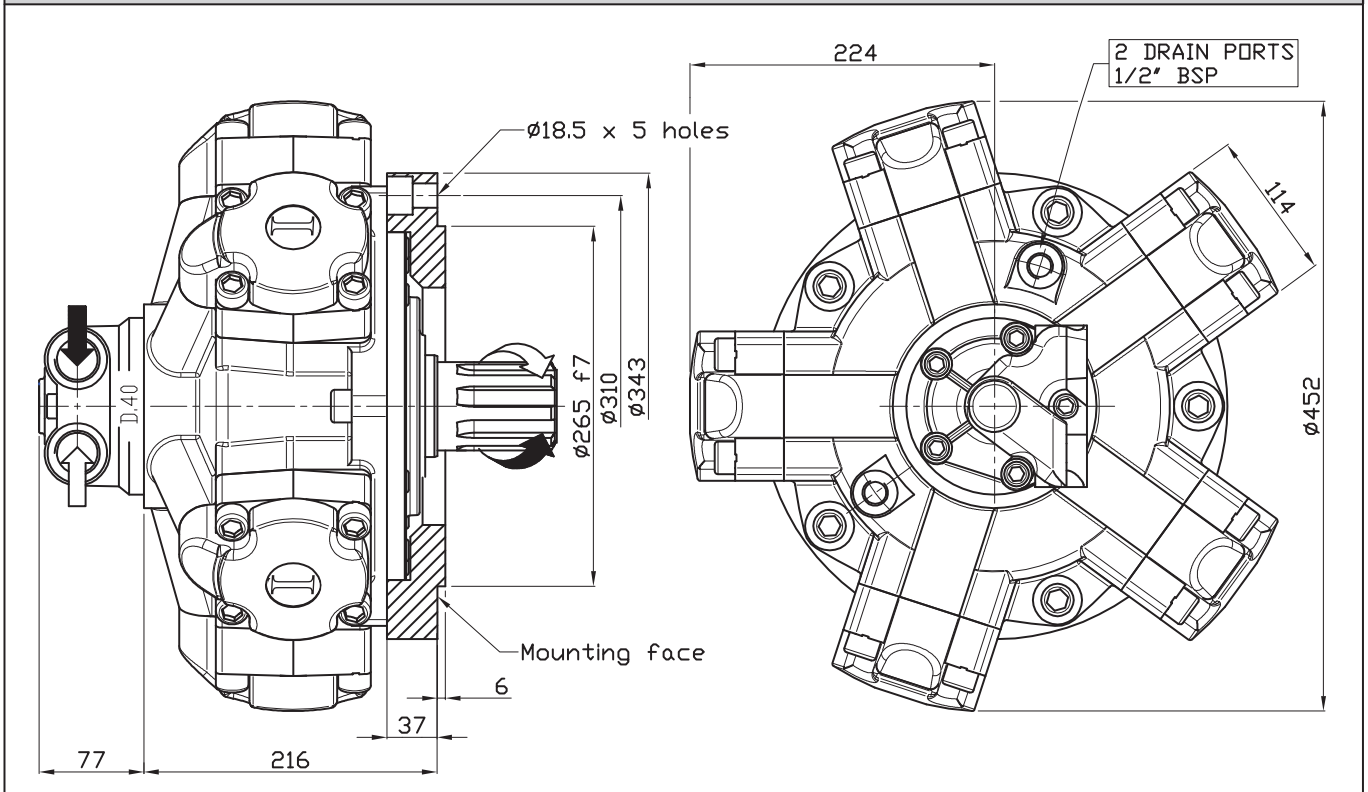
A0: Standard splined shaft

A3: Female shaft on request



SIZE

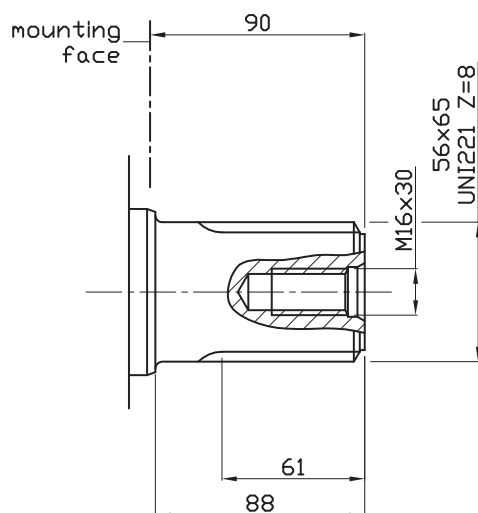
IAM 700/GM4 800/GM4 900/GM4 1000/GM4 1100/GM4 1250/GM4 H4



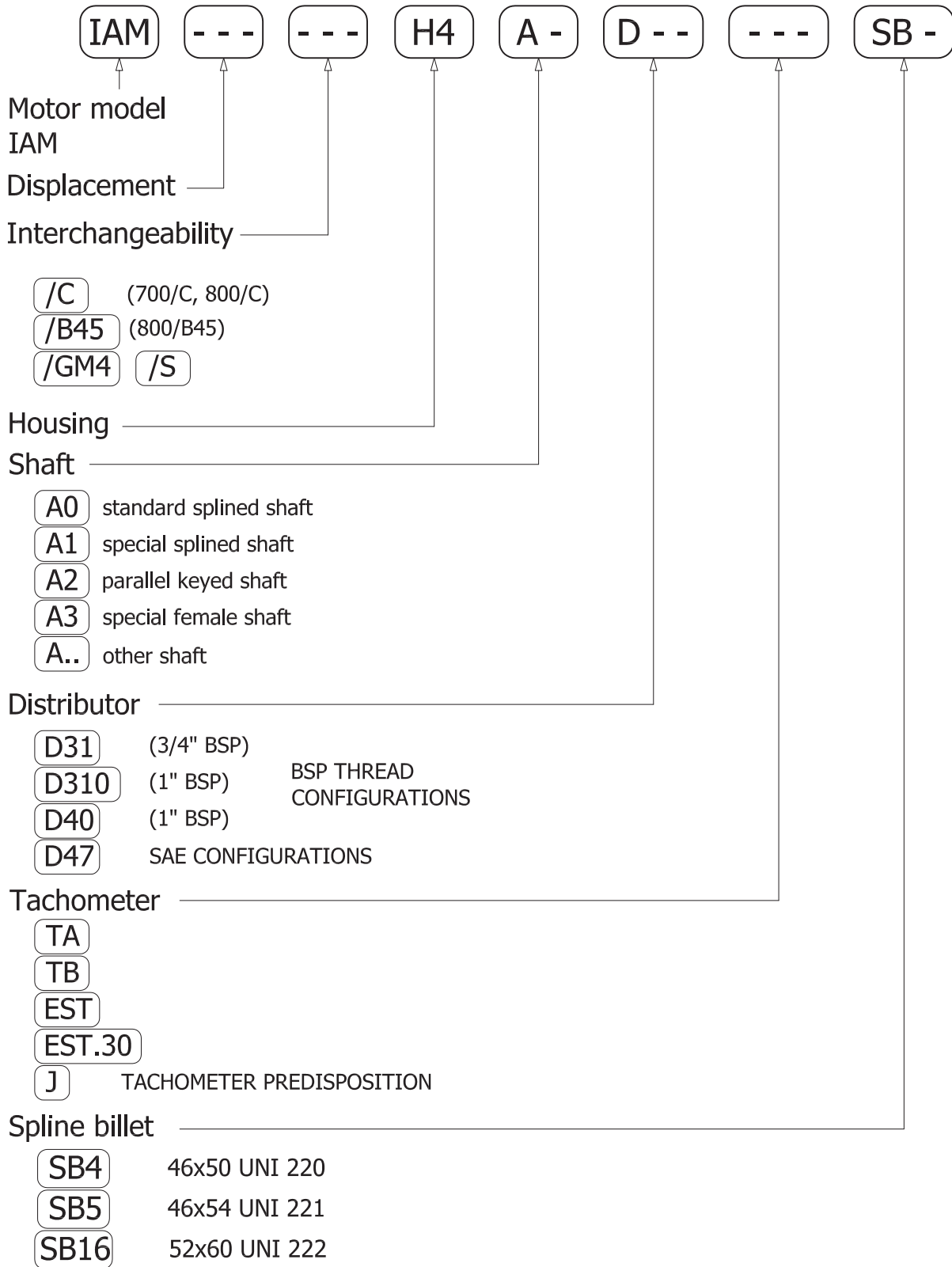
SHAFT

IAM 700/GM4 800/GM4 900/GM4 1000/GM4 1100/GM4 1250/GM4 H4

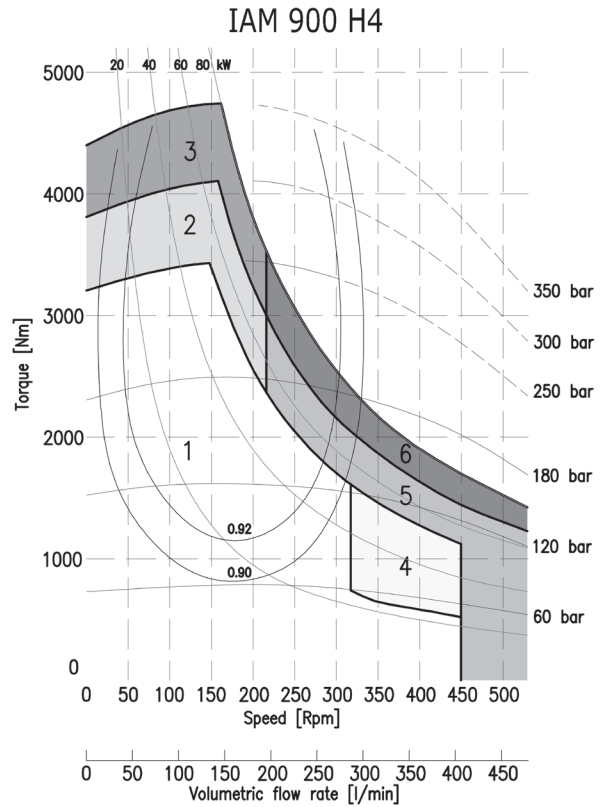
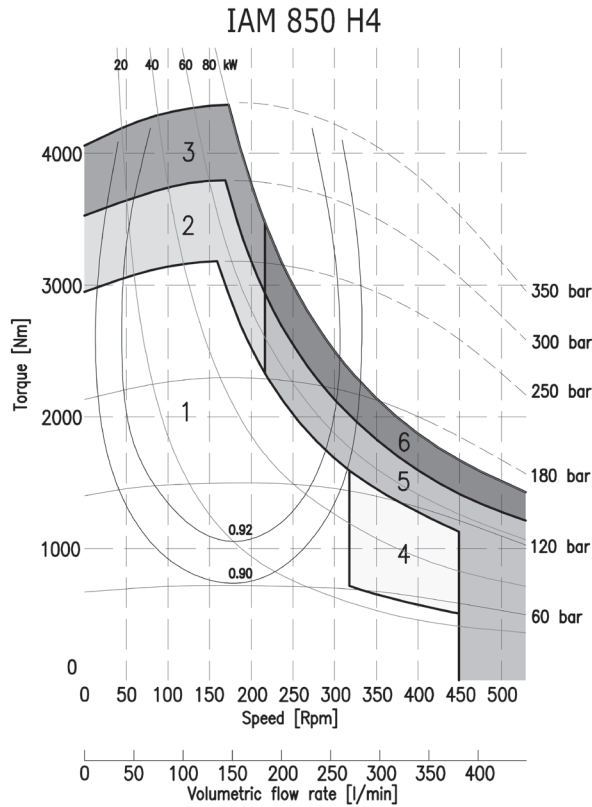
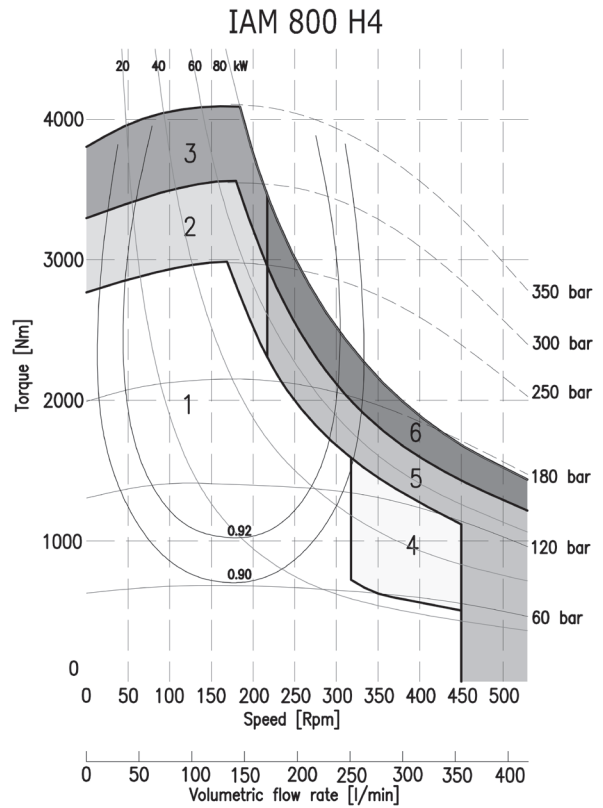
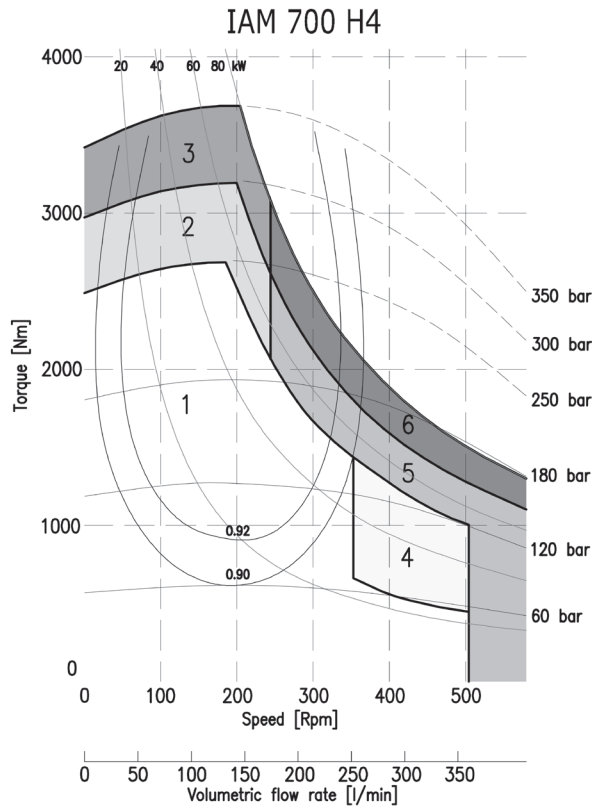
A0: Standard splined shaft



ORDERING INSTRUCTIONS

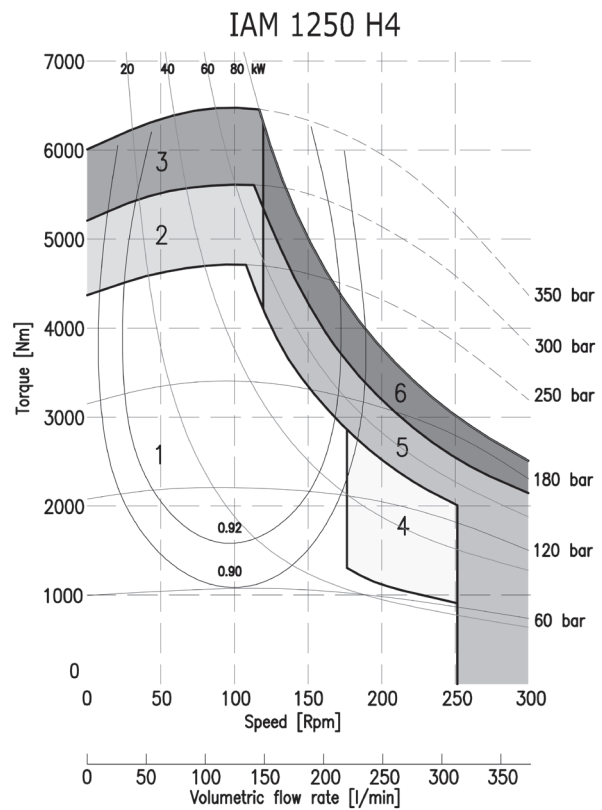
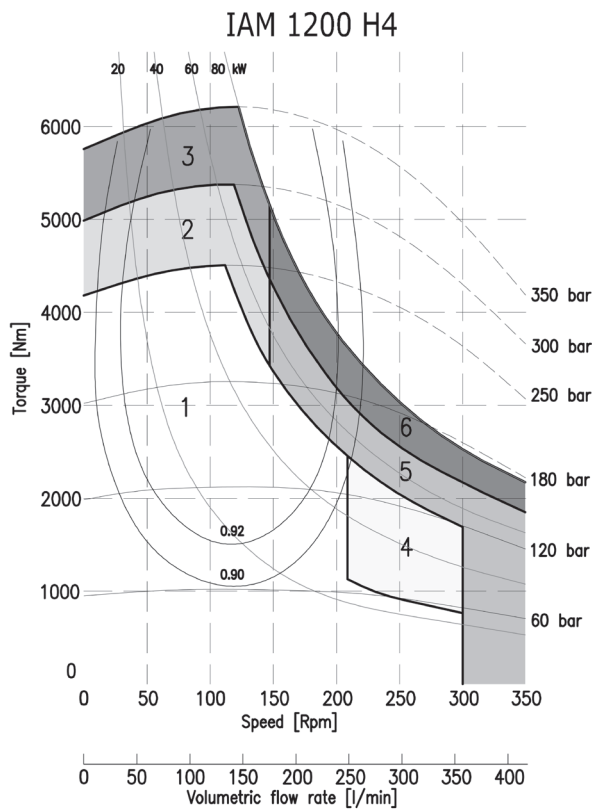
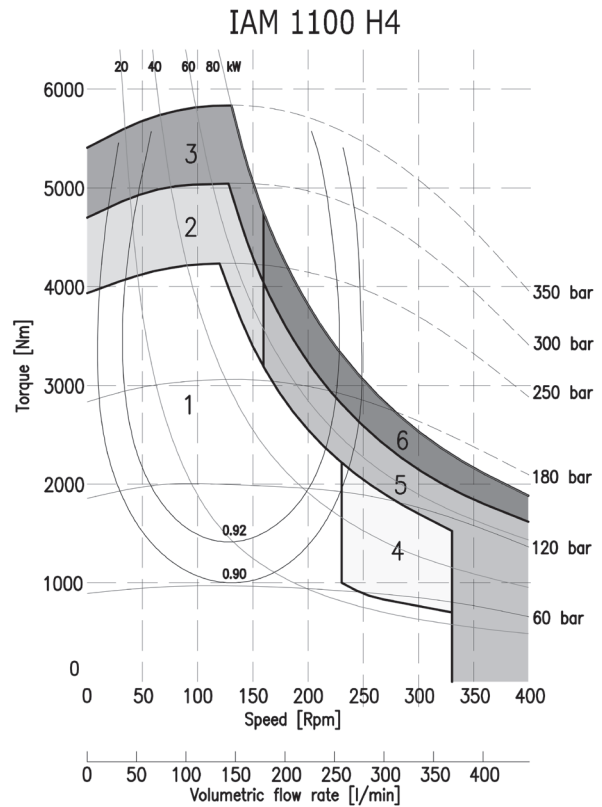
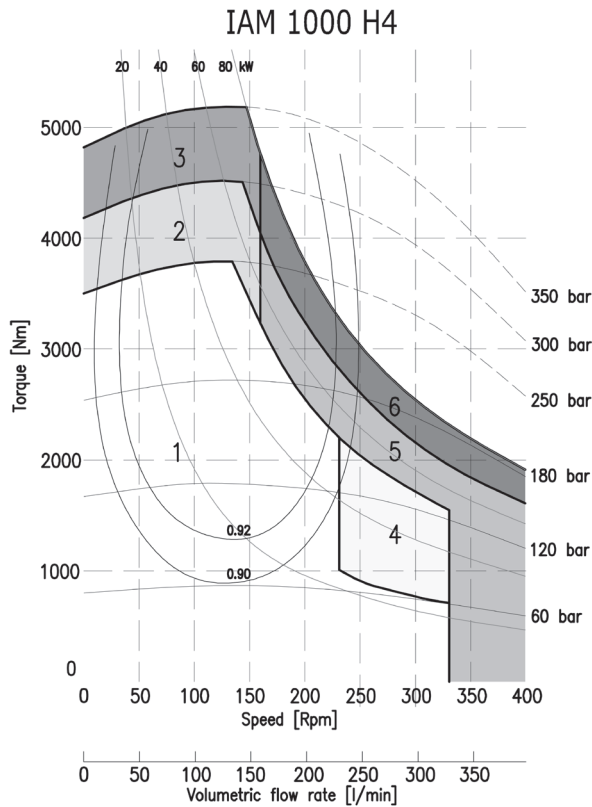


EXAMPLE: IAM.700.H4.A1.D40.SB5
IAM.800/B45.H4.A1.D31.TA
IAM.700/C.H4.A0.D40.J.SB16



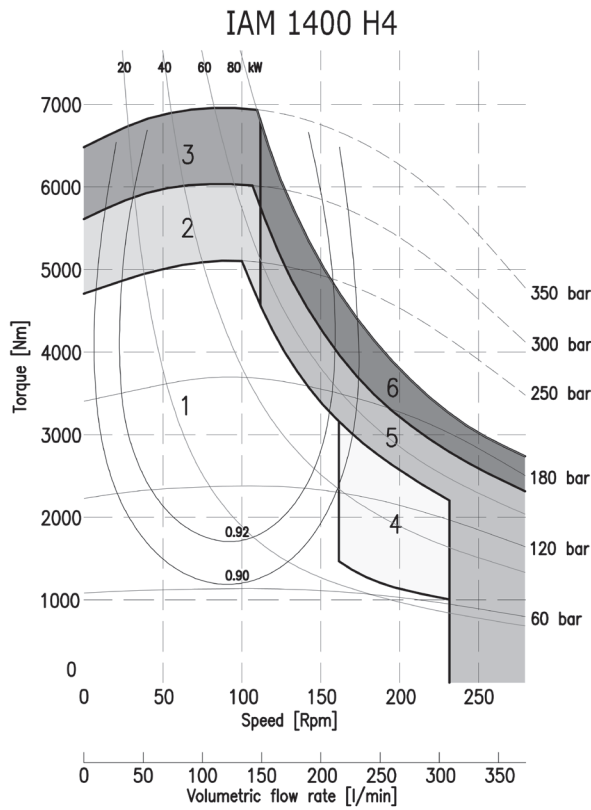
1	Continuous operation
2	Intermittent operation for period 3-5 minutes every 10-15 minutes
3	Intermittent operation for very short period (3-5 seconds every 10-15 minutes)

4	Continuous operation with flushing
5	Intermittent operation for period 3-5 minutes every 10-15 minutes with flushing
6	Intermittent operation for very short period (3-5 seconds every 10-15 minutes) with flushing



1	Continuous operation
2	Intermittent operation for period 3-5 minutes every 10-15 minutes
3	Intermittent operation for very short period (3-5 seconds every 10-15 minutes)

4	Continuous operation with flushing
5	Intermittent operation for period 3-5 minutes every 10-15 minutes with flushing
6	Intermittent operation for very short period (3-5 seconds every 10-15 minutes) with flushing



1	Continuous operation
2	Intermittent operation for period 3-5 minutes every 10-15 minutes
3	Intermittent operation for very short period (3-5 seconds every 10-15 minutes)

4	Continuous operation with flushing
5	Intermittent operation for period 3-5 minutes every 10-15 minutes with flushing
6	Intermittent operation for very short period (3-5 seconds every 10-15 minutes) with flushing