
ITALGROUP-ADVANCED-MOTORS

IAM SERIES

H3 MODEL

***IAM 350-400-450-500
600-650-700 H3***

IAM 450/C H3

IAM 450/B30 H3

IAM 800 H3

IAM 800/N H3

***IAM 400-450-500
600-700/GM3 H3***

***IAM 400-450-500
600-700/S H3***

INDEX

TECHNICAL DATA - - - - -	<i>Pag.</i>	42
IAM H3 350-400-450-500-600-650-700- - - - -	"	43
IAM H3 450/C - - - - -	"	44
IAM H3 450/B30 - - - - -	"	45
IAM H3 800 - - - - -	"	46
IAM H3 800/N - - - - -	"	47
IAM H3 400-450-500-600-700/GM3 - - - - -	"	48
IAM H3 400-450-500-600-700/S - - - - -	"	49
ORDERING INSTRUCTIONS - - - - -	"	50
GRAPHIC PERFORMANCES H3 350-400-450-500 - - - - -	"	51
GRAPHIC PERFORMANCES H3 600-650-700-800 - - - - -	"	52

TECHNICAL DATA

H3

MODEL		IAM 350 H3	IAM 400 H3	IAM 450 H3	IAM 500 H3	IAM 600 H3	IAM 650 H3	IAM 700 H3	IAM 800 H3
Displacement	cc/rev	349	397	452	491	594	660	707	791
Specific Torque	Nm/bar	5.6	6.3	7.2	7.8	9.4	10.5	11.2	12.6
Max cont. Pressure	bar	250	250	250	250	250	250	250	250
Max int. Pressure	bar	300	300	300	300	300	300	300	300
Peak pressure	bar	350	350	350	350	350	350	350	350
Max continuous speed	rpm	630	600	600	600	550	500	450	400
Peak speed	rpm	700	680	680	680	630	580	500	450
Max continuous power	HP	63	63	63	63	63	63	63	63
	kW	45	45	45	45	45	45	45	45
Max power	HP	91	91	91	91	91	91	91	91
	kW	68	68	68	68	68	68	68	68

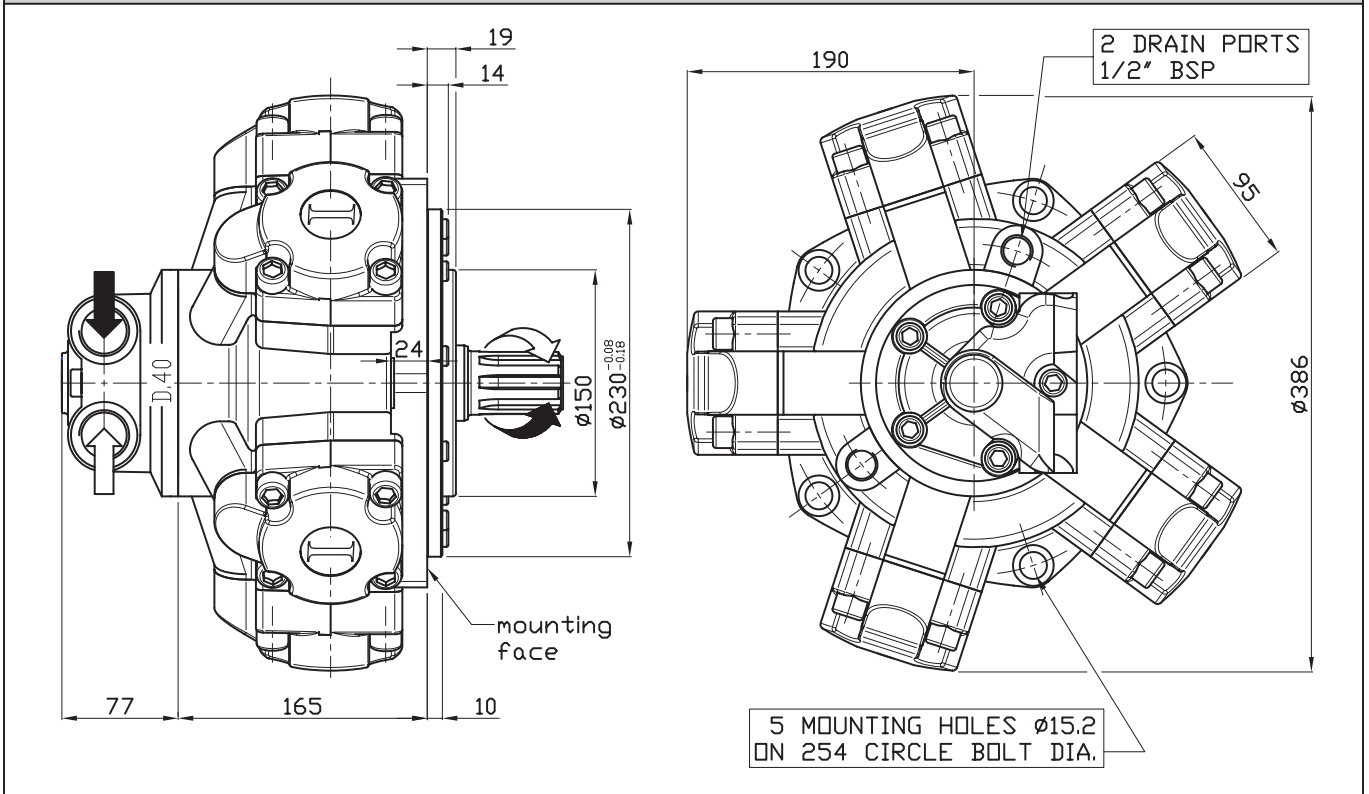
- N° of pistons: 5
- Max case pressure: 6 bar
- Max back pressure: 70 bar
- Dry weight: 68 kg
- Temperature range: -30°C ÷ +70°C
- Minimum speed: 1 rpm
- Flushing flow^(*):

IAM H3 350 – 400 – 450 – 500	8 l/min
IAM H3 600 – 650 – 700 - 800	10 l/min

(*)for further details regarding flushing go to page 10 of this catalogue.

SIZE

IAM 350-400-450-500-600-650-700 H3

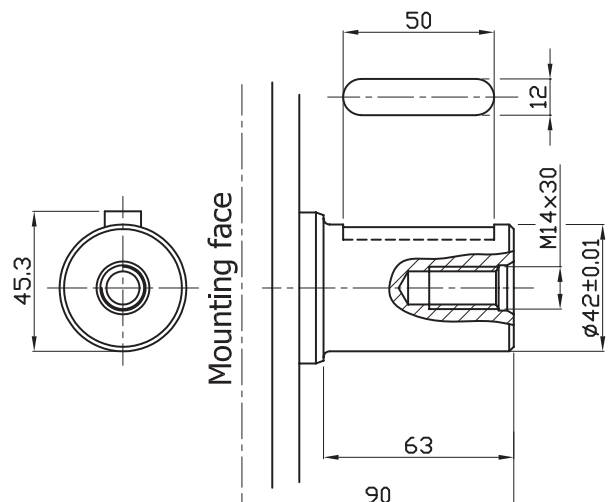
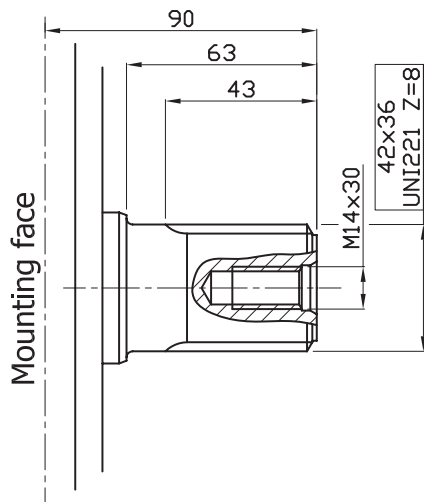


SHAFT

IAM 350-400-450-500-600-650-700 H3

A0: Standard splined shaft

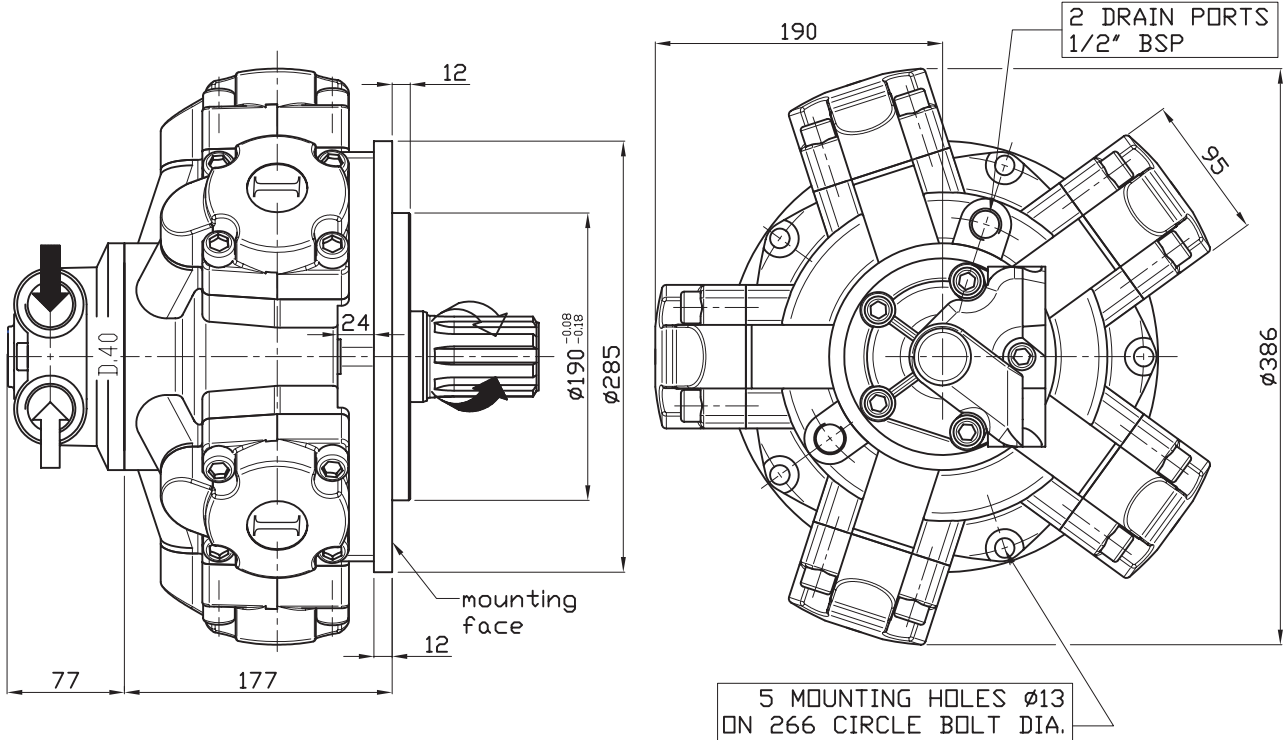
A2: Parallel shaft on request



IAM 350 H3 A0 AVAILABLE ON REQUEST

SIZE

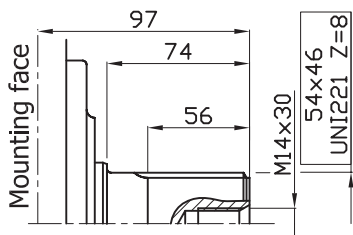
IAM 450/C H3



SHAFT & OPTION

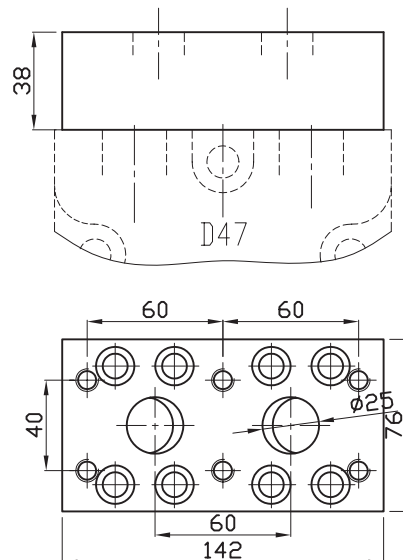
IAM 450/C H3

A1: Standard splined shaft

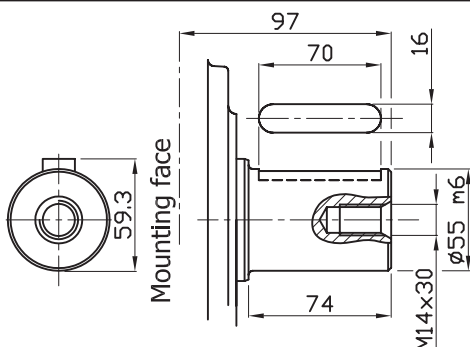


FL2: connection block

Connection block, fitting D47 distributor, for motor MR 350/450/500/600/700/800

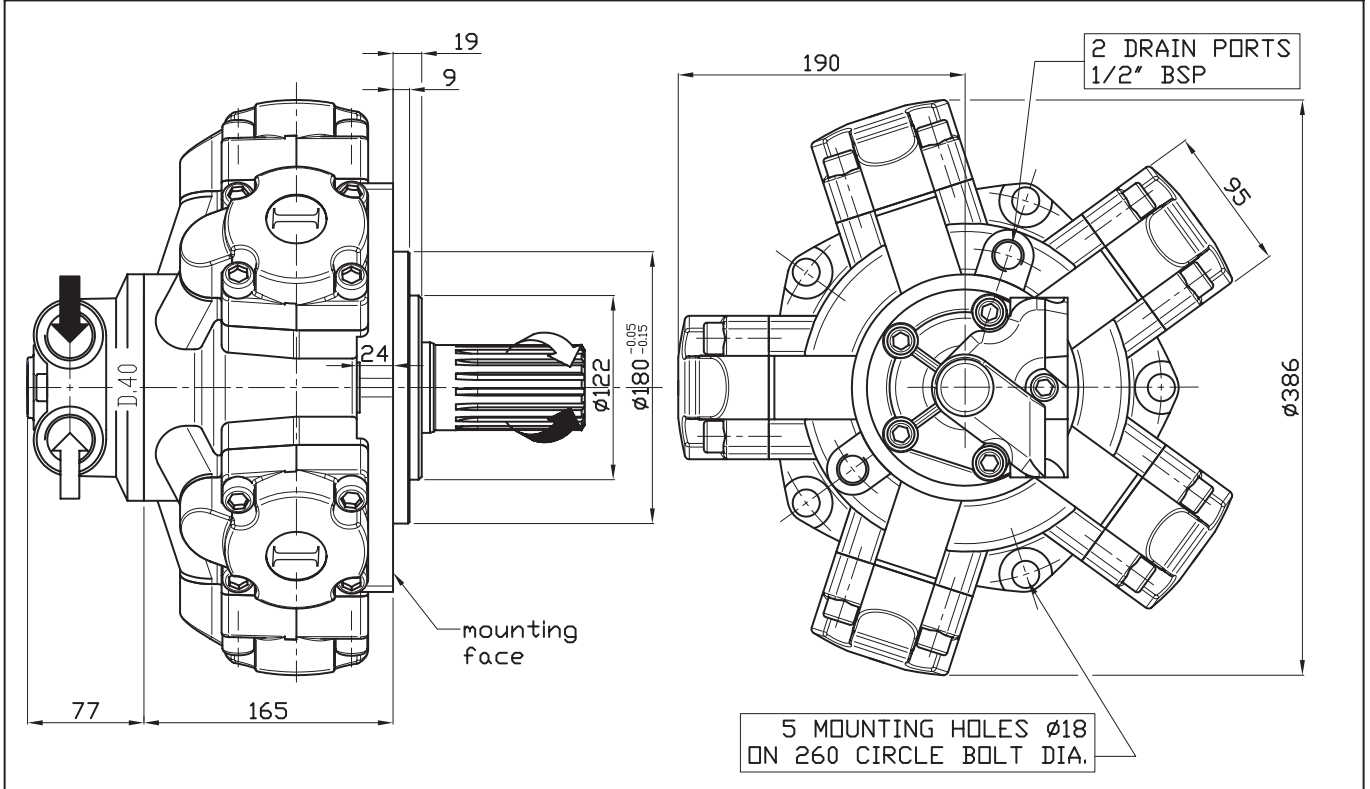


A2: Parallel shaft on request



SIZE

IAM 450/B30 H3



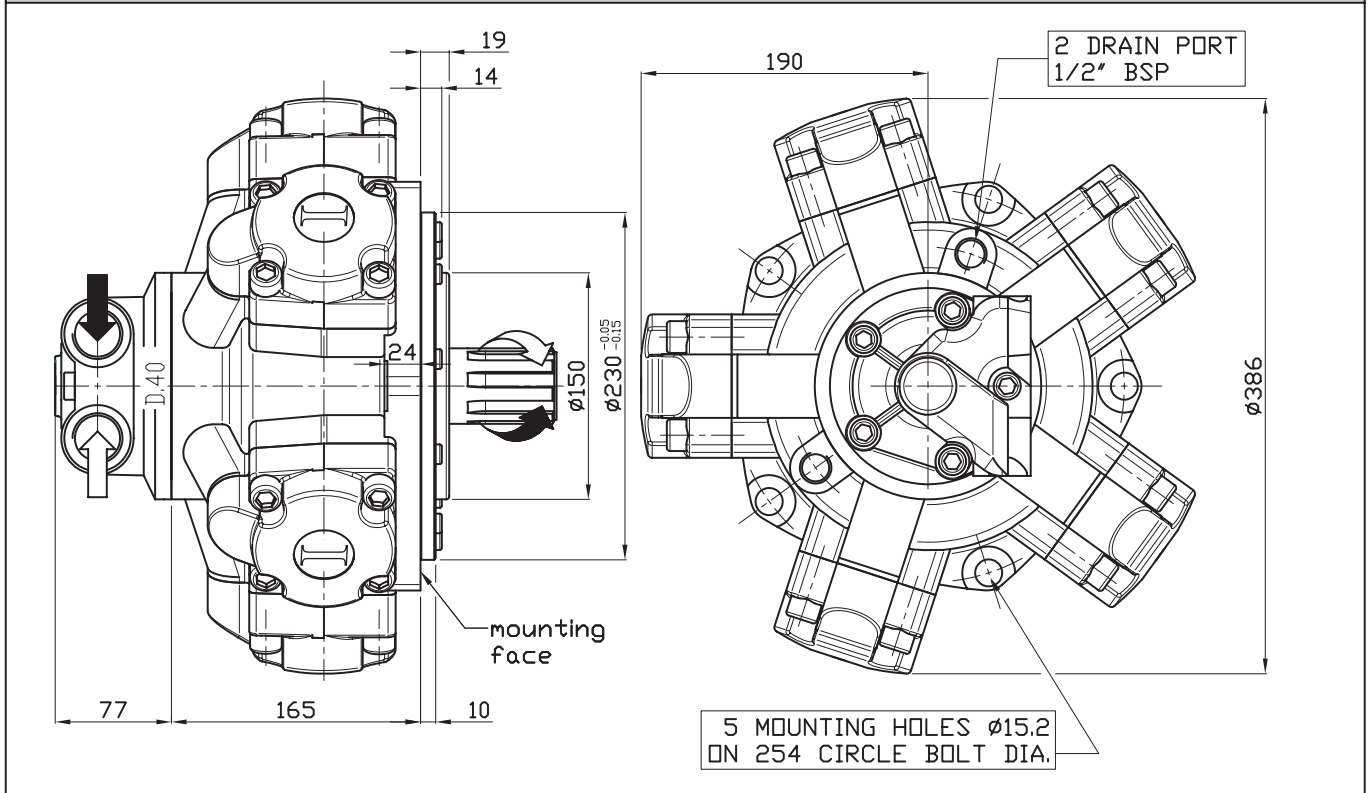
SHAFT

IAM 450/B30 H3

A0: Standard splined shaft	A1: Splined shaft on request	A2: Parallel shaft on request
<p>Technical drawing of the standard splined shaft (A0). Dimensions include a total length of 130, a splined section length of 100, and a splined section diameter of 71. The shaft is threaded with 1/2" 20 UNF 2B and has a thread length of 17. The thread specification is BS 3550-1963 P 8/16 - 17.</p>	<p>Technical drawing of the splined shaft on request (A1). Dimensions include a total length of 130, a splined section length of 100, and a splined section diameter of 71. The shaft is threaded with 1/2" 20 UNF 2B and has a thread length of 17. The thread specification is W 55x3x17x7h DIN 5480.</p>	<p>Technical drawing of the parallel shaft on request (A2). Dimensions include a total length of 130, a splined section length of 100, and a splined section diameter of 71. The shaft is threaded with 1/2" 20 UNF 2B and has a thread length of 17. The thread specification is $\phi 55_{-0.015}^{-0.015}$. A diameter of 58.8 is also indicated for the shaft body.</p>

SIZE

IAM 800 H3



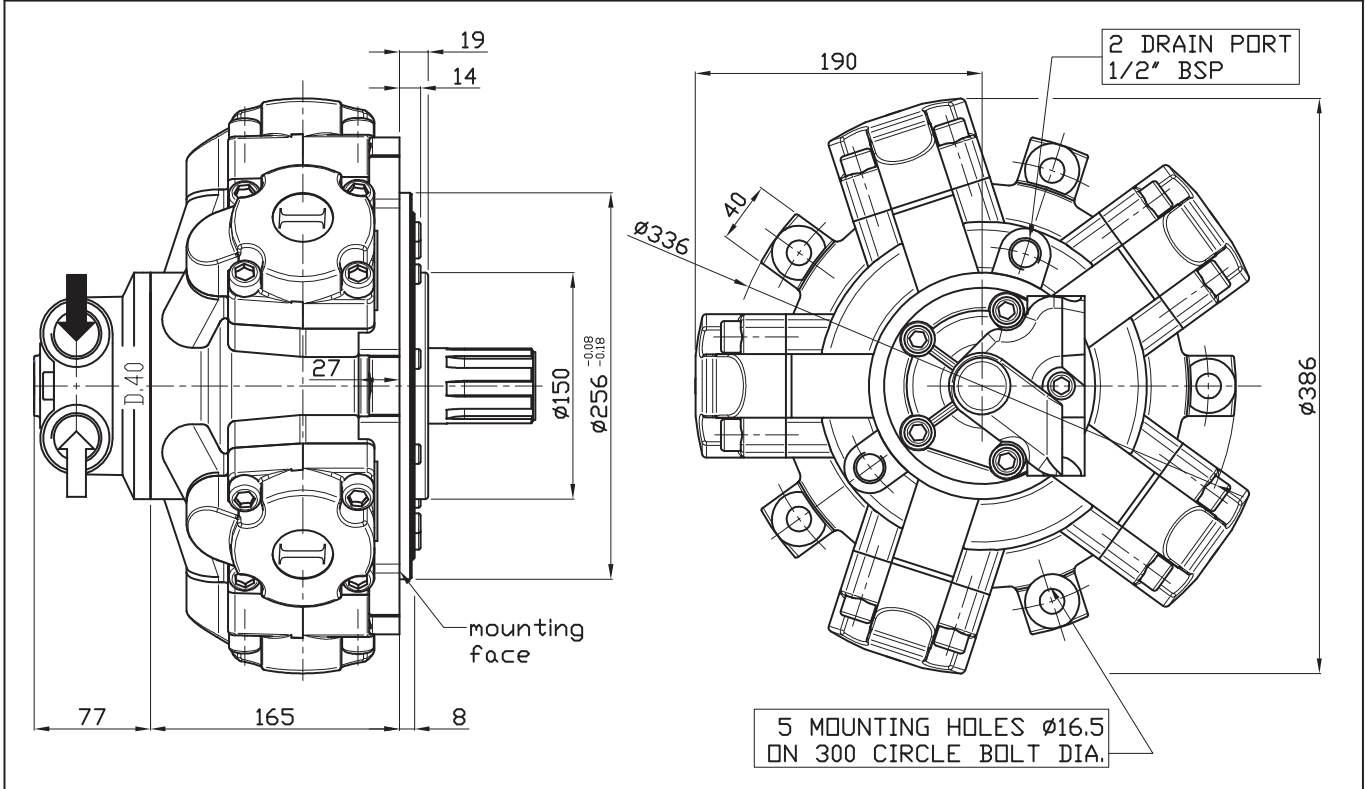
SHAFT

IAM 800 H3

A0: Standard splined shaft	A2: Parallel shaft on request	A22: Parallel shaft on request
<p>Technical drawing of a standard splined shaft (A0). Dimensions: 90 total length, 47 splined length, M14x30 thread, 50x46 splined length, UNI 220 Z=8.</p>	<p>Technical drawing of a parallel shaft (A2). Dimensions: 50 shaft length, 12 chamfer length, M14x30 thread, 63 total length, 90 mounting face length, $\phi 42 \pm 0.01$ diameter.</p>	<p>Technical drawing of a parallel shaft (A22). Dimensions: 60 shaft length, 16 chamfer length, M14x30 thread, 90 mounting face length, $\phi 50_{-0.01}^{+0.01}$ diameter.</p>

SIZE

IAM 800/N H3



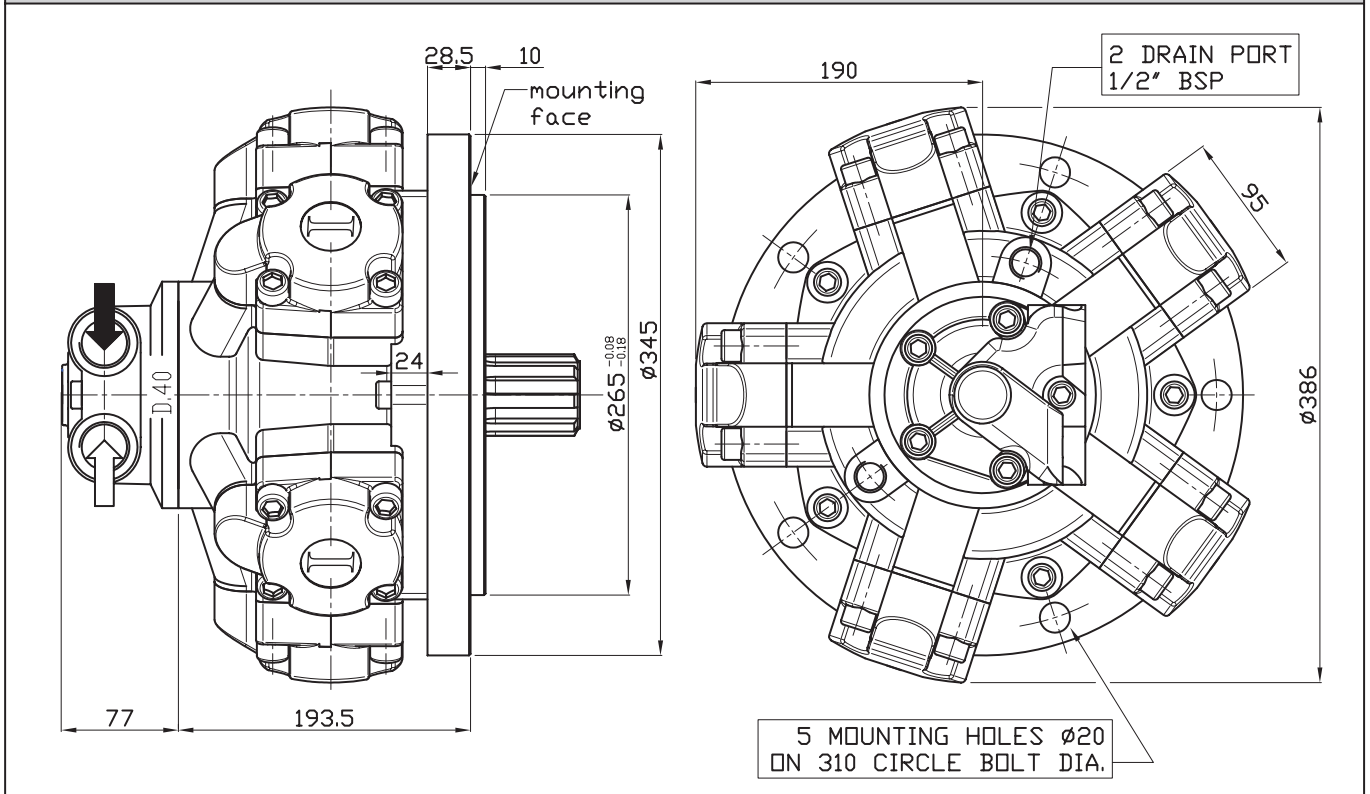
SHAFT

IAM 800/N H3

A1: Standard splined shaft	A2: Parallel shaft on request	A22: Parallel shaft on request
<p>Technical drawing of a standard splined shaft (A1). Dimensions: 90 total length, 47 splined length, M14x30 thread, 50x46 UNI 220 Z=8 splines. Mounting face is indicated.</p>	<p>Technical drawing of a parallel shaft (A2). Dimensions: 50 shaft length, 12 shaft diameter, M14x30 thread, $\phi 42 \pm 0.01$ shaft diameter. Mounting face is indicated.</p>	<p>Technical drawing of a parallel shaft (A22). Dimensions: 60 shaft length, 16 shaft diameter, M14x30 thread, $\phi 50_{-0.01}^{+0.01}$ shaft diameter. Mounting face is indicated.</p>

SIZE

IAM 400/GM3 450/GM3 500/GM3 600/GM3 700/GM3 H3

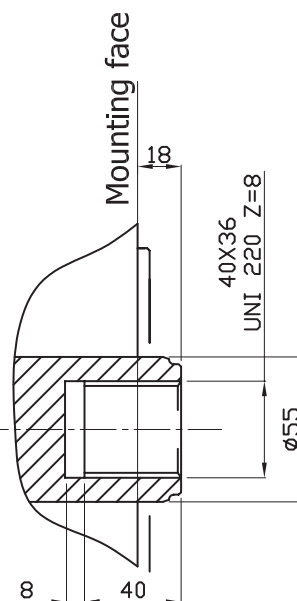
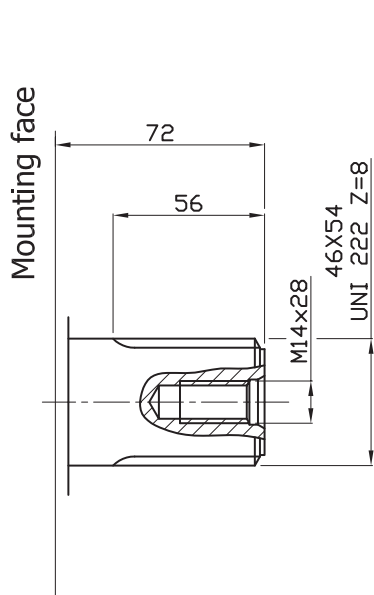


SHAFT

IAM 400/GM3 450/GM3 500/GM3 600/GM3 700/GM3 H3

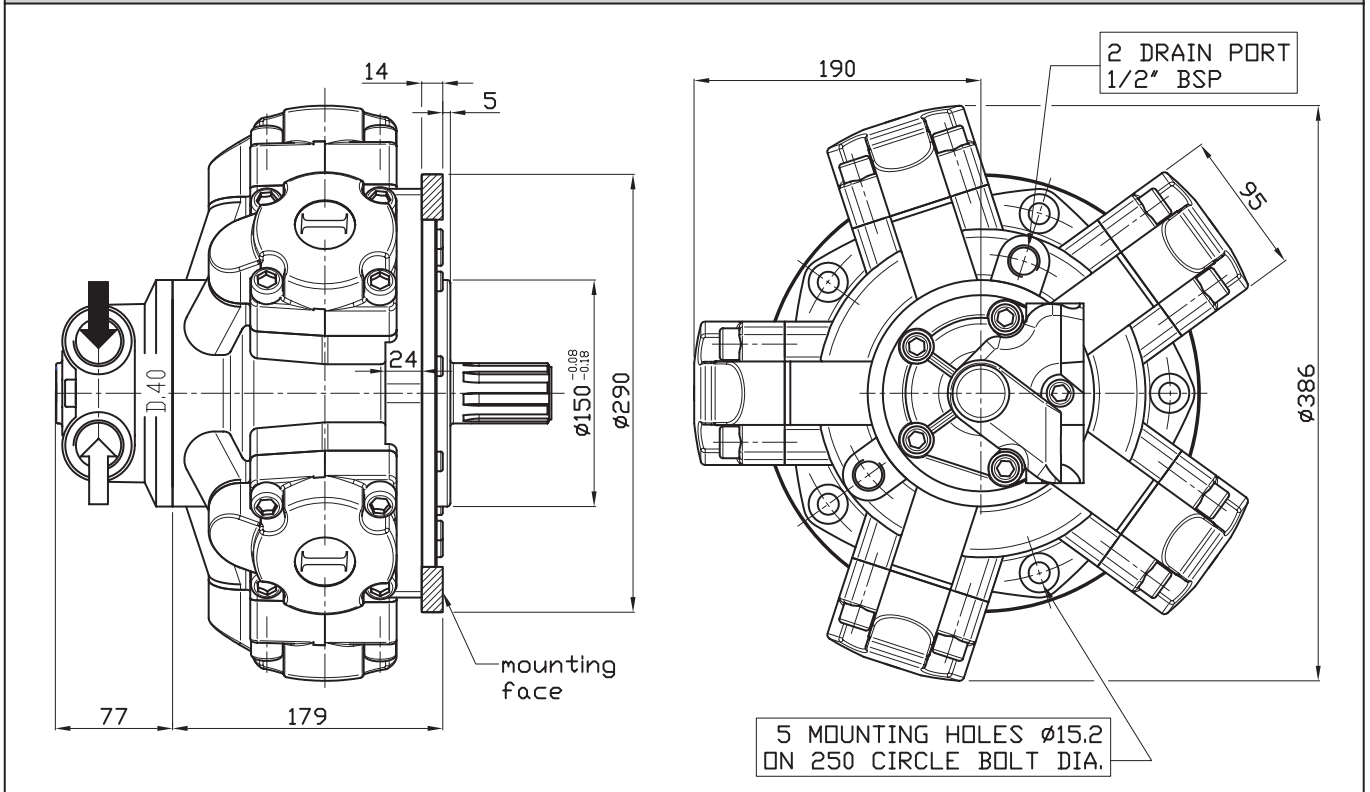
A0: Standard splined shaft

A3: Female shaft on request



SIZE INTERCHANGEABLE WITH M3

IAM 400/S 450/S 500/S 600/S 700/S H3

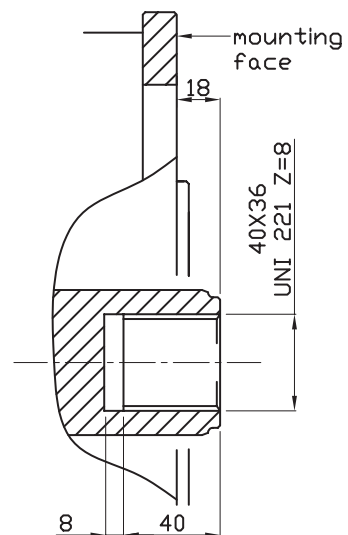
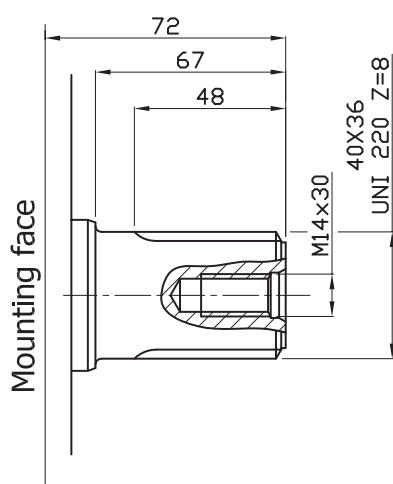


SHAFT

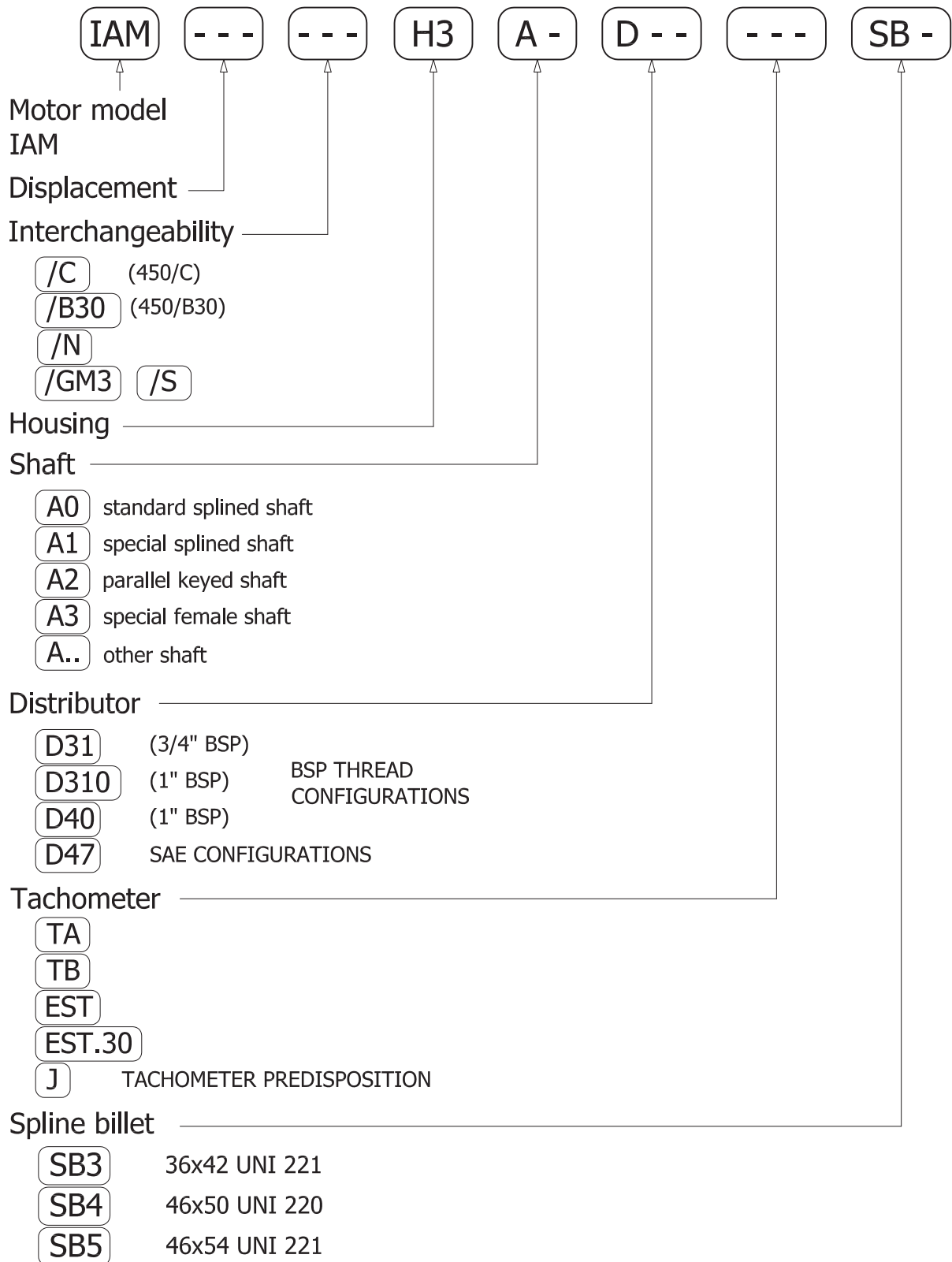
IAM 400/S 450/S 500/S 600/S 700/S H3

A0: Standard splined shaft

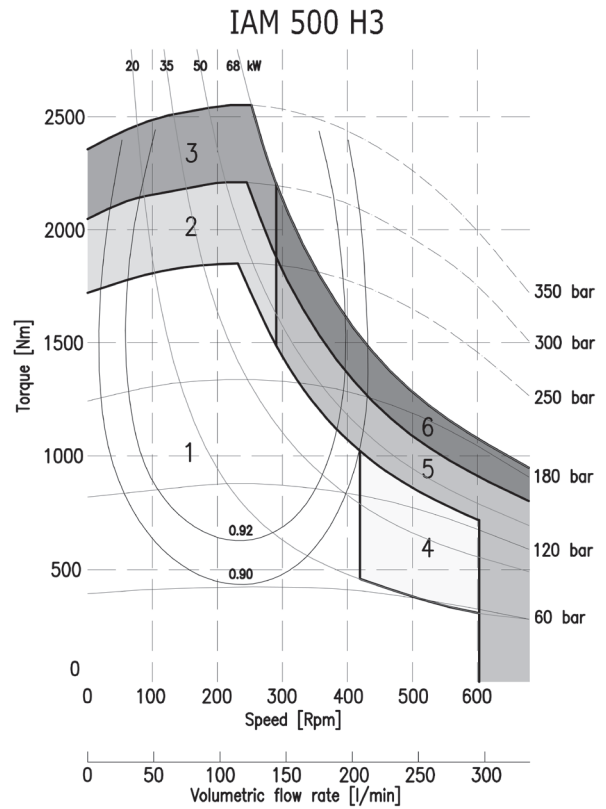
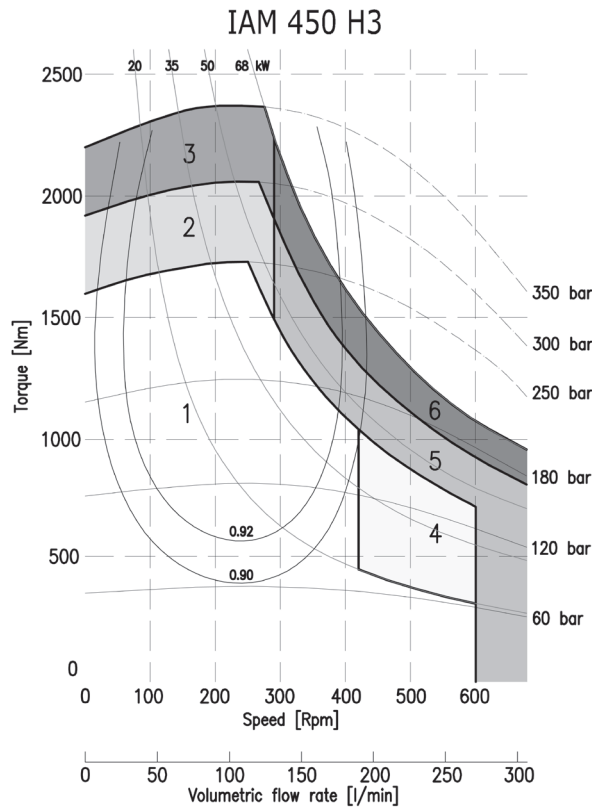
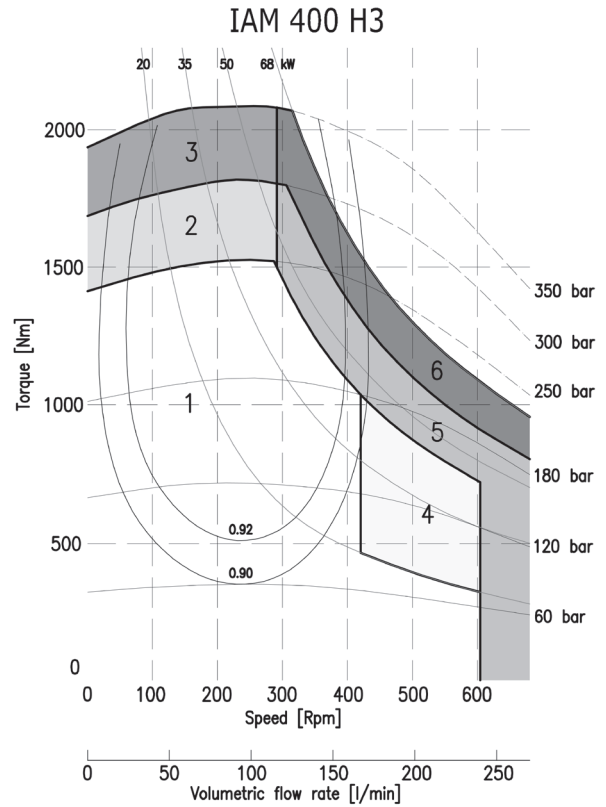
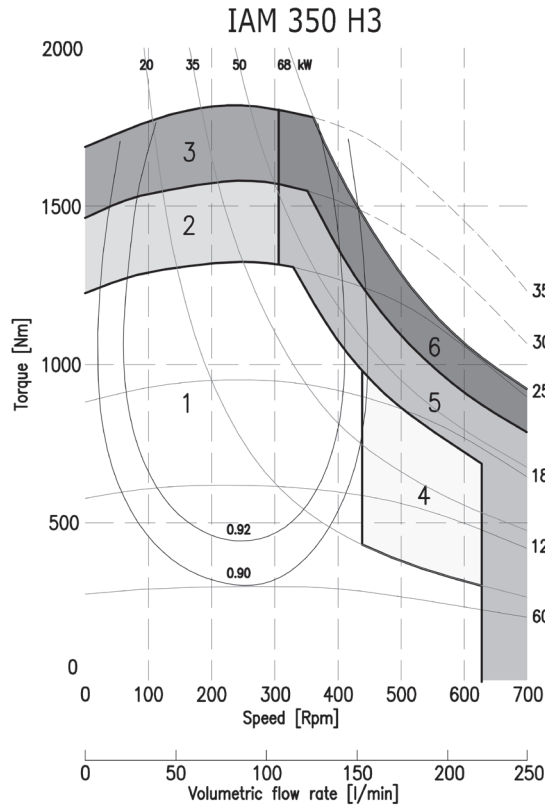
A3: Female shaft on request



ORDERING INSTRUCTIONS



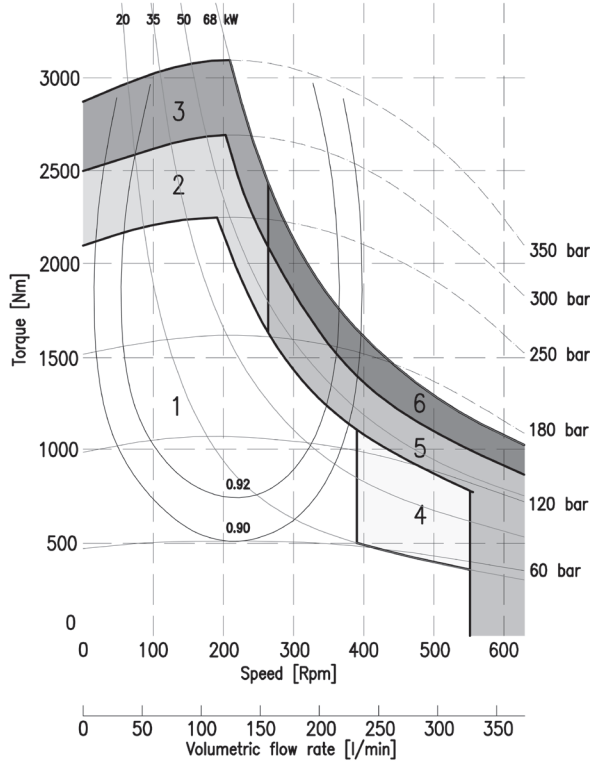
EXAMPLE: IAM.400.H3.A0.D40
IAM.450/C.H3.A1.D40.J.SB5
IAM.500/GM3.H3.A0.D40.TA.SB5



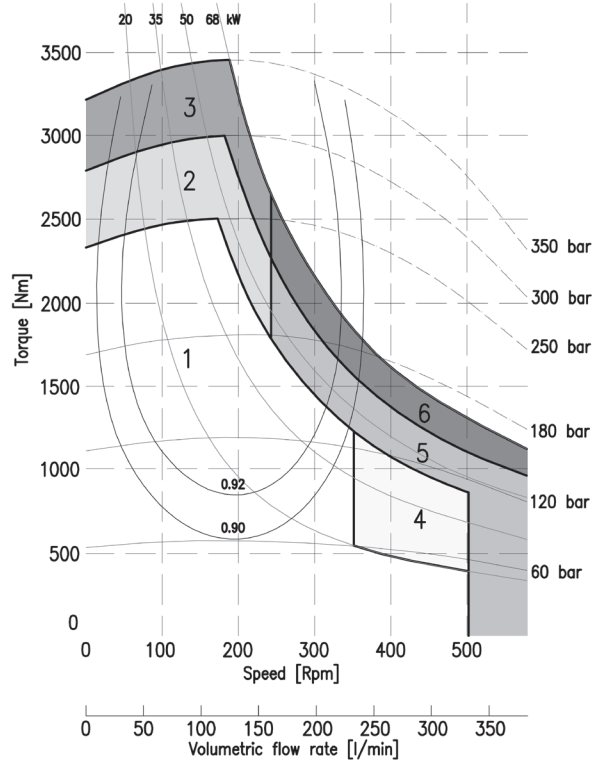
1	Continuous operation
2	Intermittent operation for period 3-5 minutes every 10-15 minutes
3	Intermittent operation for very short period (3-5 seconds every 10-15 minutes)

4	Continuous operation with flushing
5	Intermittent operation for period 3-5 minutes every 10-15 minutes with flushing
6	Intermittent operation for very short period (3-5 seconds every 10-15 minutes) with flushing

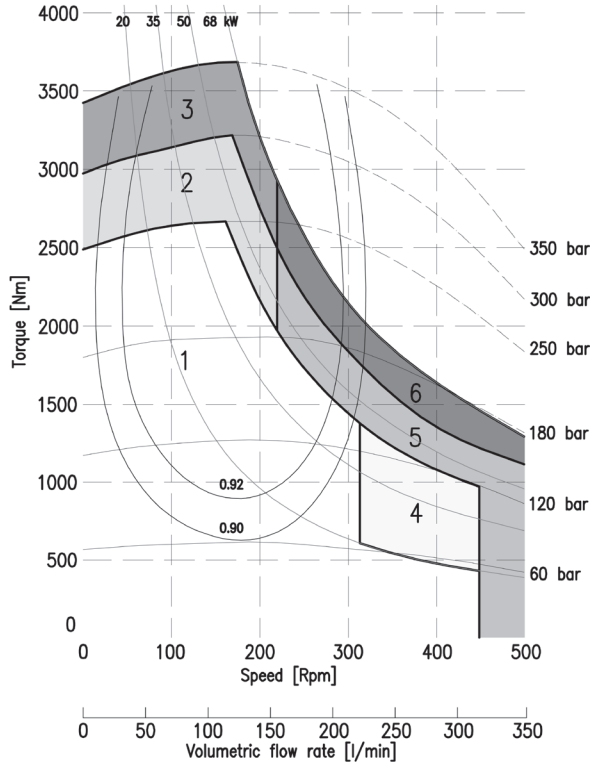
IAM 600 H3



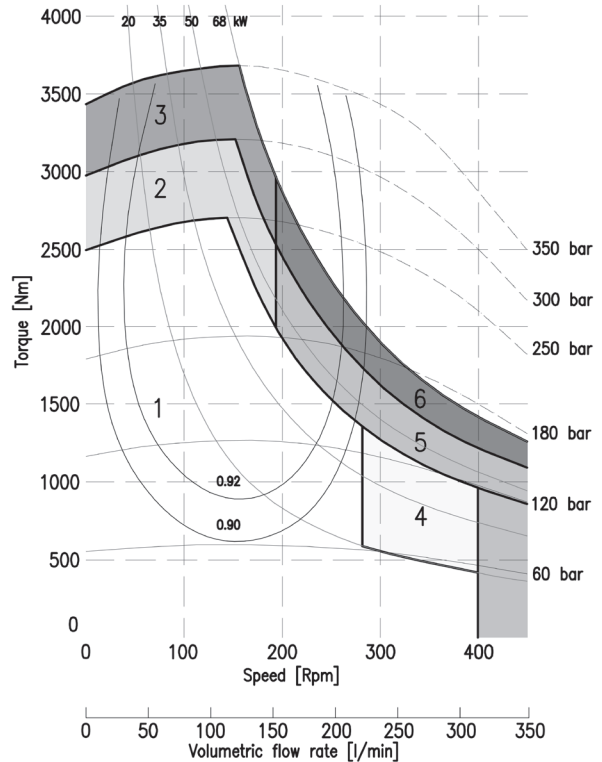
IAM 650 H3



IAM 700 H3



IAM 800 H3



1	Continuous operation
2	Intermittent operation for period 3-5 minutes every 10-15 minutes
3	Intermittent operation for very short period (3-5 seconds every 10-15 minutes)

4	Continuous operation with flushing
5	Intermittent operation for period 3-5 minutes every 10-15 minutes with flushing
6	Intermittent operation for very short period (3-5 seconds every 10-15 minutes) with flushing