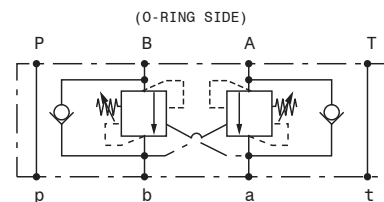
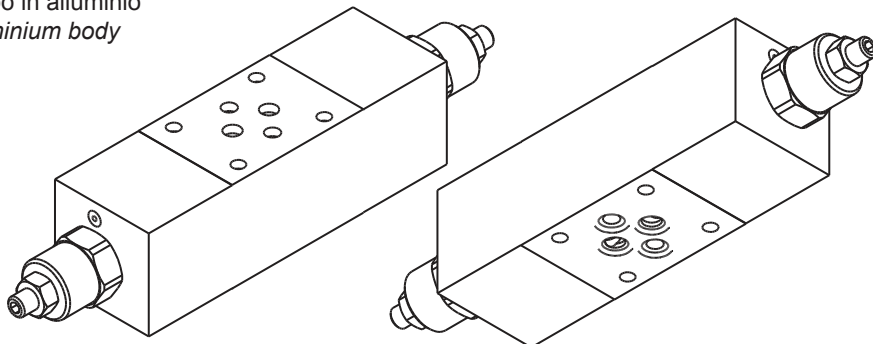


Valvola overcentre doppio effetto modulare – luce 6  
 Double effect counterbalance valve, sandwich mounting – NG6

mod. OVC-DE-F-C3

Corpo in alluminio  
 Aluminium body



|  |                     |
|--|---------------------|
| Portata massima<br>Max flow                                    | 35 l/min<br>9 gpm   |
| Pressione massima<br>Max pressure                              | 350 bar<br>5000 psi |
| Rapporto di pilotaggio standard<br>Standard pilot ratio        | 4,25:1              |
| Rapporto di pilotaggio a richiesta<br>Pilot ratio upon request | 3:1 8:1 10:1        |

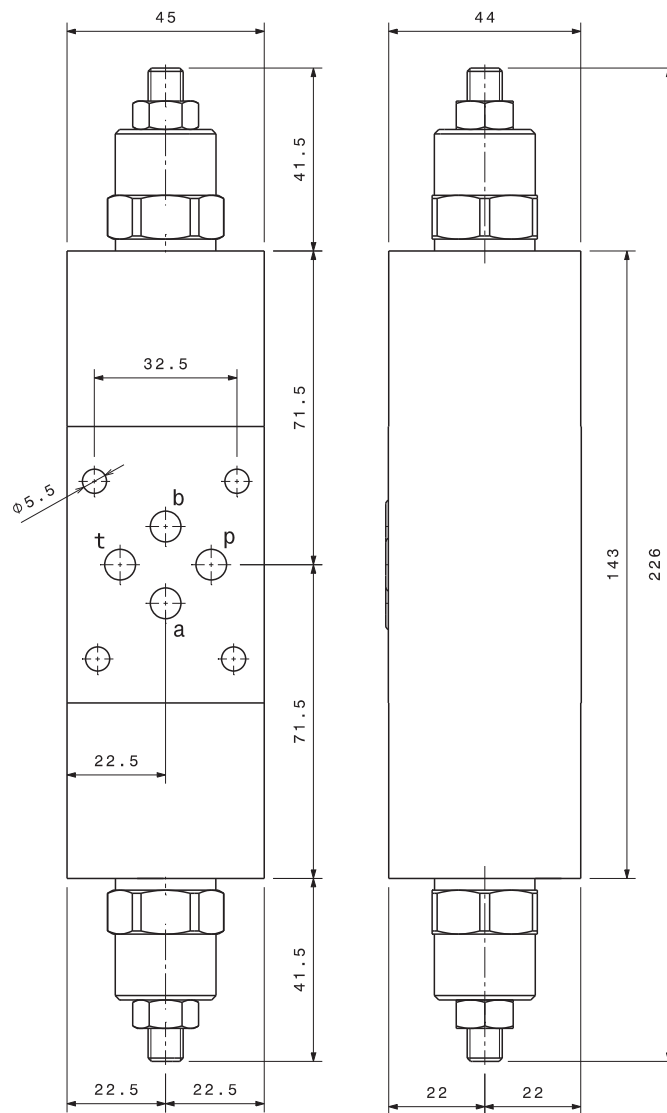
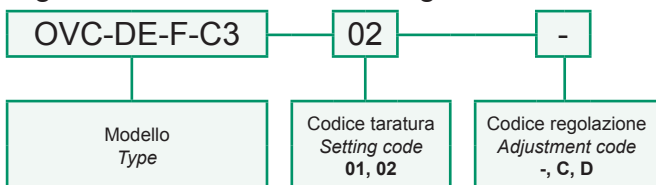
|                     |  |  |  |                              |
|---------------------|--|--|--|------------------------------|
| Taratura<br>Setting | La valvola deve essere tarata almeno 1.3 volte la massima pressione indotta dal carico<br>The valve must be set at least 1.3 times maximum load induced pressure |  |  |                              |
|                     | Codice<br>Code   | Taratura standard<br>Standard setting<br>(Q=5 l/min) | Campo di taratura<br>Adj. Pressure range | Colore molla<br>Spring color |
|                     | 01   | 100 bar<br>1450 psi                                  | 20÷200 bar<br>290÷2900 psi               | Bianco<br>White              |
|                     | 02   | 280 bar<br>4060 psi                                  | 50÷350 bar<br>725÷5075 psi               | Nero<br>Black                |

|  |              |
|--|--------------|
| Dati e tarature ottenuti usando olio con viscosità 30 cSt a 50°C<br>Performances and calibrations are carried out by using hydraulic oil with 30 cSt viscosity at 50°C |              |
| Viscosità consigliate<br>Recommended viscosity   | 10 ÷ 420 cSt |
| Temperature di lavoro<br>Working temperature   | -20 ÷ +90 °C |
| Filtrazione assoluta<br>Absolute filtration  | 25 µ         |

**Regolazioni / Adjustments**

|  |                           |                   |
|--|---------------------------|-------------------|
| -  | <b>C</b>                  | <b>D</b>          |
|  |                           |                   |
| Vite esterna esagono incassato<br>Leakproof hex socket screw | Piombatura<br>Sealing cap | Cappellino<br>Cap |

Sigla di ordinazione / Ordering code



I dati non sono impegnativi, CBF si riserva di apportare modifiche senza preavviso.  
 The specifications are not binding, CBF reserves the right to introduce modifications without notice.