

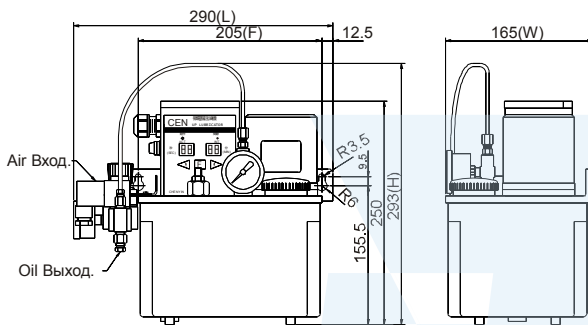
# CEN22 горизонтальная, CEN23 вертикальная станции смазки масляный туман



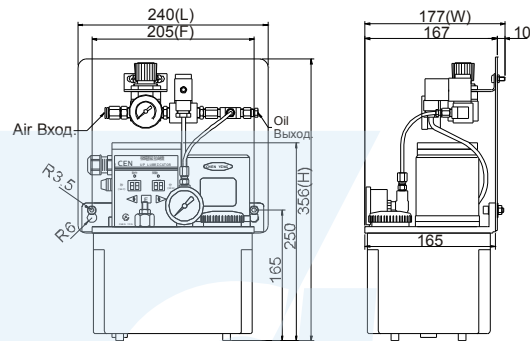
CEN22-03



CEN23-03



CEN22-03 Type стандарт External



CEN23-03 Type стандарт External

## Описание

1. The timer controls the operation and interval time. The electronic box has operation and interval indicators.
2. The electronic box can automatically save the original operation and interval time while the power is suddenly off. After turning on the power, it would return to the original setting time and start the cycle again.
3. It has a feed-oil button ( **F** button), press the button and the oil will feed immediately.
4. The выходн. volume is stable and can be adjusted by the pressure-regulating valve. Turning the valve clockwise, the oil volume will increase, and turning anticlockwise, the oil volume will reduce.
5. When the power of the lubricator turns off, the air pressure and output power will be turned off at the same time for safety.
6. It has a pressure-regulating valve, which can adjust the pressure and easy to check from the манометр.
7. It has a float switch that can detect the oil volume. It will have an automatic signal when the oil level is lower than the minimum.
8. The function of CEN22, CEN23 types are similar to CEN24 (Horizontal), CEN25 (Vertical) types. The difference is CEN24, CEN25 types are without timer, and CEN22, CEN23 types are with timers.

## Application of Machines Equipment

The oil-mist type electric lubricator has cooling, lubricative and filtering effect, which can reduce wear of lubrication point. It's suitable for cutting machines and bearings.

Модель	Act Time	interval Time	Motor	Max Volume	Max Pressure	1Ø Напряж	Ampere	Hertz	ВЫХОДН. Отв.	Вязкость
CEN22Horizontal CEN23Vertical	1-99sec	1-99sec 1-99min	25W	200 cc/min	15kgf/cm <sup>2</sup>	110V 220V	2.5A 1A	50/60Hz	Ø4orØ6	32-68cSt@40°C

Модель	Бак код	Бак Матер.	вместим. Литры	Креп.отв. расстояние(mm)	длина(mm)	Ширина(mm)	Высот.(mm)	Масса (kg)	CEN22, CEN23 ода фаза схема подкл.			
CEN22	03	Пласт.	3L	205	290	165	293	5.70	Float Switch	Abnormal Output	Ground	Power
	04	Пласт.	4L	250	348	169	293	6.30				
CEN23	03	Пласт.	3L	205	240	177	356	6.40	⊕	⊕	⊕	⊕
	04	Пласт.	4L	250	285	174	372	7.00	⊕	⊕	⊕	⊕

## Усл.обознач.:

CEN	22	03	1	C	25	3	※
Модель:Oil-Mist	Объем бака(Матер.)	Time ( Act x interval)	Напряж.	Motor	выходн. Отв.	Доп.детали	
22:Horizontal Type	03:3L (Пласт.)	1:sec x sec	A:110V	25:25W	2:Ø4 (C манометром)		
23:Vertical Type	04:4L (Пласт.)	2:sec x min	C:220V		3:Ø6 (C манометром)		

CEN22 Horizontal, CEN23 Vertical Type Oil-mist Electric Lubricators

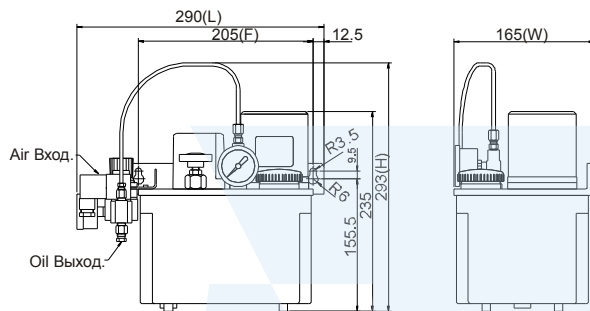
# CEN24 горизонтальная, CEN25 вертикальная масляный туман станции смазки



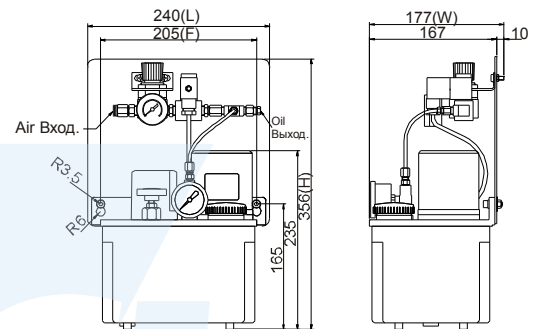
CEN24-03



CEN25-03



CEN24-03 Type стандарт Externals



CEN25-03 Type стандарт Externals

### Описание

1. CEN24, CEN25 types are without timer, also could be controlled by Programmable Logic Controller (PLC).
2. The выходн. volume is stable and can be adjusted by the pressure-regulating valve. Turning the valve clockwise, the oil volume will increase, and turning anticlockwise, the oil volume will reduce.
3. When the power of the lubricator turns off, the air pressure and output power will be turned off at the same time for safety.
4. It has a pressure-regulating valve, which can adjust the pressure and easy to check from the манометр.
5. It has a float switch that can detect the oil volume. It will have abnormal signal automatically when the oil level is lower than the minimum.
6. The function of CEN24, CEN25 types are similar to CEN22 (Horizontal), CEN23 (Vertical) types. The difference is CEN24, CEN25 types are without timer, and CEN22, CEN23 types are with timers.

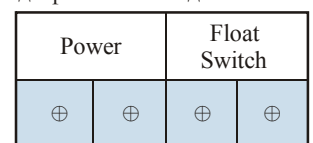
### Application of Machines Equipment

The oil-mist type electric lubricator has cooling, lubricative and filtering effect, which can reduce wear of lubrication point. It's suitable for cutting machines and bearings.

Модель	Motor	Max Volume	Max Pressure	1Ø Напряж.	Ampere	Hertz	ВЫХОДН. Отв.	Вязкость
CEN24 Horizontal CEN25 Vertical	25W	200 cc/min	15kgf/cm <sup>2</sup>	110V 220V	2.5A 1A	50/60Hz	Ø4orØ6	32-68cSt@40°C

Модель	Бак код	Бак Матер.	вместим. Литры	Креп.отв. расстояние(mm)	длина (mm)	Ширина (mm)	Высот. (mm)	Масса (kg)
CEN24	03	Пласт.	3L	205	290	165	293	5.65
	04	Пласт.	4L	250	348	169	293	6.25
Модель	Бак код	Бак Матер.	вместим. Литры	Креп.отв. расстояние(mm)	длина (mm)	Ширина (mm)	Высот. (mm)	Масса (kg)
CEN25	03	Пласт.	3L	205	240	177	356	6.10
	04	Пласт.	4L	250	285	174	372	7.30

CEN24, CEN25  
ода фаза схема подкл.



### Усл.обознач.:

CEN	24	03	C	25	3	※
Модель:Oil-Mist	Объем бака (Матер.)	Напряж.	Motor	выходн. Отв.	Доп.детали	
24:Horizontal Type	03:3L ( Пласт.)	A: 110V	25:25W	2:Ø4 ( С манометром )		
25:Vertical Type	04:4L ( Пласт.)	C:220V		3:Ø6 ( С манометром )		