

Features

- * Suitable for flammable working environments.
- * The valve is actuated by air for accurate response.



How to order

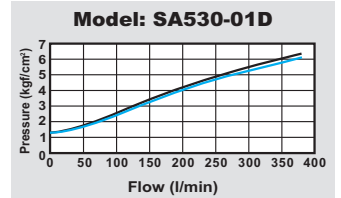
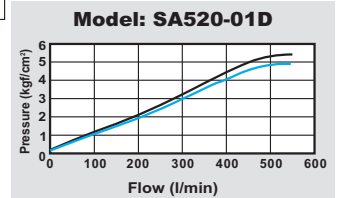
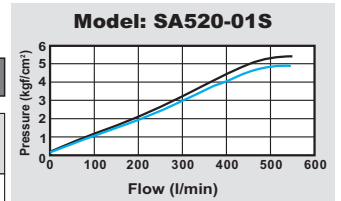
SA520
O1
N
S

SA pneumatic valves series		Port size	Thread	Pneumatic control	
52	5/2 way	01 1/8"	Blank N	PS NPT	S D
53	5/3 way valve is only available for double pneumatic control				Single pneumatic Double pneumatic

Specifications

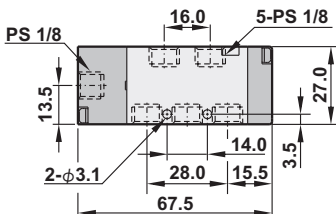
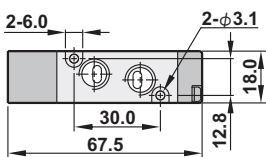
Model	SA520-01S	SA520-01D	SA530-01D
Port size	1/8"		
Sectional area	11mm ²	9mm ²	
Fluid	Compressed air		
Acting	External pilot (1.5 ~ 7 kgf/cm ²)		
Operating pressure range	0 ~ 8 kgf/cm ²		
Max. operating pressure	9.99 kgf/cm ²		
Ambient temperature	-10°C ~ 80°C		
Net weight	70g	75g	110g

Flow chart

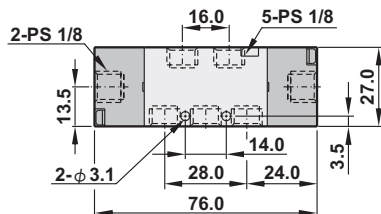
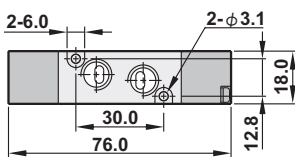


Dimensions

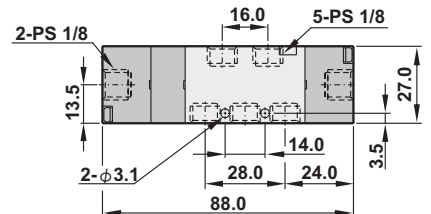
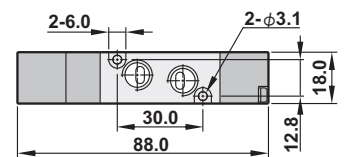
SA520-01S



SA520-01D



SA530-01D



Features

- * Suitable for flammable working environments.
- * The valve is actuated by air for accurate response.
- * The mounting position is identical to the counter product from SMC.



How to order

SB520
02
N
S
SB pneumatic valves series
Port size
02 1/4"

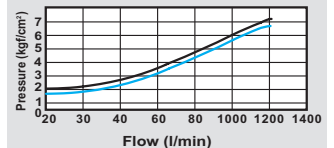
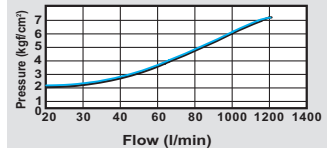
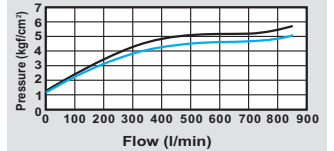
Thread
Blank PS
N NPT

Pneumatic control
S Single pneumatic
D Double pneumatic

5/3 way valve is only available for double pneumatic control

52	5/2 way
53	5/3 way

Flow chart

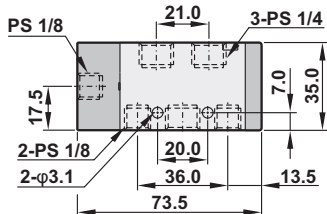
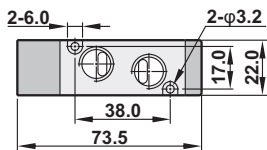
Model: SB520-02S

Model: SB520-02D

Model: SB530-02D


Specifications

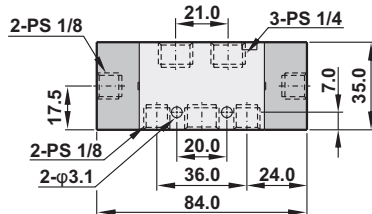
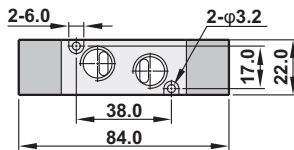
Model	SB520-02S	SB520-02D	SB530-02D
Port size	1/4"		
Sectional area	18mm ²		14mm ²
Fluid	Compressed air		
Acting	External pilot (1.5 ~ 7 kgf/cm ²)		
Operating pressure range	0 ~ 8 kgf/cm ²		0 ~ 7 kgf/cm ²
Max. operating pressure	9.99 kgf/cm ²		
Ambient temperature	-10°C ~ 80°C		
Net weight	135g	145g	220g

Dimensions

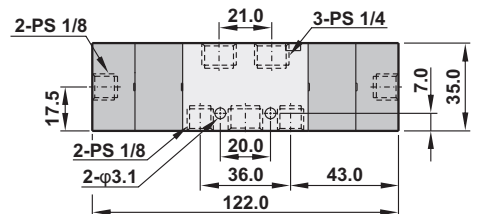
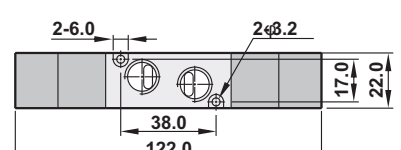
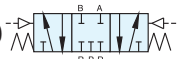
SB520-02S



SB520-02D

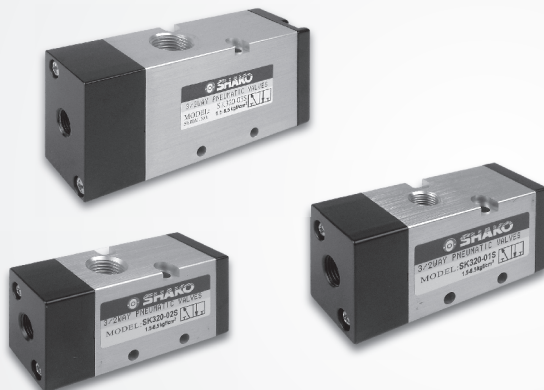


SB530-02D

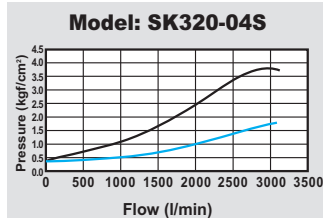
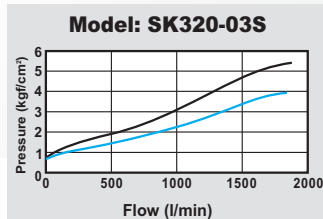
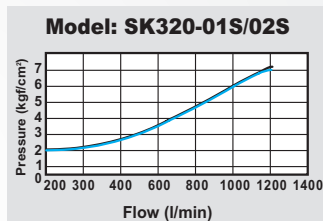


Features

- * Suitable for flammable working environments.
- * The valve is actuated by air for accurate response.



Flow chart



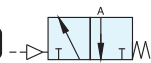
How to order

SK320	-	02	N	S
SK pneumatic valves series		Port size	Thread	Pneumatic control
32 3/2 way (N.C.)		01 1/8"	Blank PS	S Single pneumatic
		02 1/4"	N NPT	
		03 3/8"		
		04 1/2"		

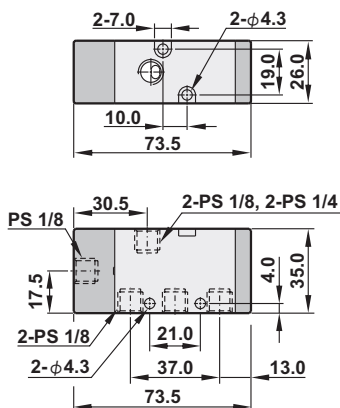
Specifications

Model	SK320-01S	SK320-02S	SK320-03S	SK320-04S
Port size	1/8"	1/4"	3/8"	1/2"
Sectional area	14mm ²	18mm ²	35mm ²	70mm ²
Fluid	Compressed air			
Acting	External pilot (1.5 ~ 7 kgf/cm ²)			
Operating pressure range	0 ~ 8 kgf/cm ²		0 ~ 8 kgf/cm ²	
Max. operating pressure	9.9 kgf/cm ²			
Ambient temperature	-10°C ~ 80°C			
Net weight	180g		375g	595g

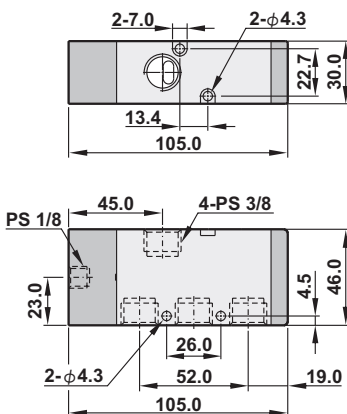
Dimensions



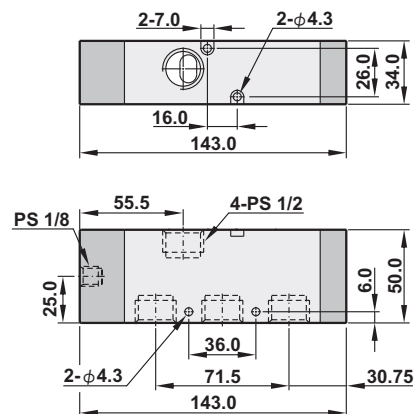
SK320-01S/02S



SK320-03S



SK320-04S



Features

- * Suitable for flammable working environments.
- * The valve is actuated by air for accurate response.



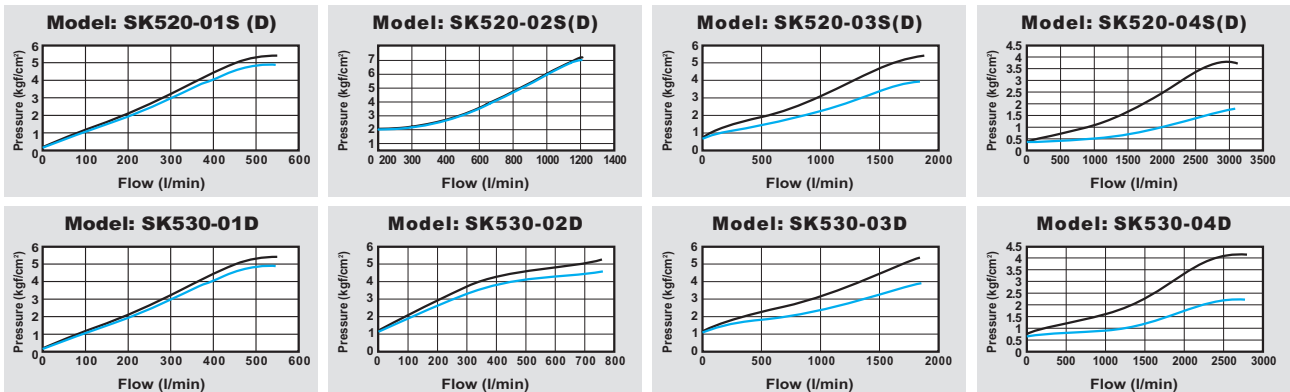
How to order

SK520 -	02	N	S
SK pneumatic valves series	Port size	Thread	Pneumatic control
52 5/2 way	01 1/8"	Blank PS	S Single pneumatic
53 5/3 way	02 1/4"	N NPT	D Double pneumatic
	03 3/8"		5/3 way valve is only available for double pneumatic control
	04 1/2"		

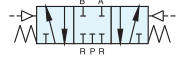
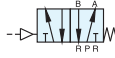
Specifications

Model	SK520-01S(D)	SK530-01D	SK520-02S(D)	SK530-02D	SK520-03S(D)	SK530-03D	SK520-04S(D)	SK530-04D
Port size	1/8"		1/4"		3/8"		1/2"	
Fluid	Compressed air							
Sectional area	18mm ²	14mm ²	18mm ²	14mm ²	35mm ²	32mm ²	70mm ²	54mm ²
Acting	External pilot (1.5 ~ 7 kgf/cm ²)							
Operating pressure range	0~8kgf/cm ²	0~7kgf/cm ²	0~8kgf/cm ²	0~7kgf/cm ²	0~8kgf/cm ²	0~7kgf/cm ²	0~8kgf/cm ²	0~7kgf/cm ²
Max. operating pressure	9.9 kgf/cm ²							
Ambient temperature	-10°C ~ 80°C							
Net weight	170g/180g	310g	170g/180g	310g	370g/400g	585g	565g/605g	865g

Flow chart



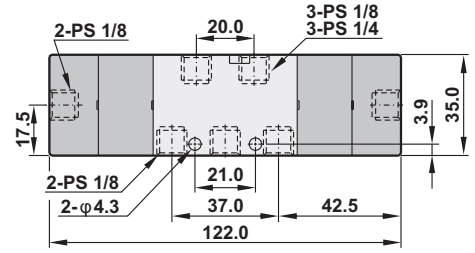
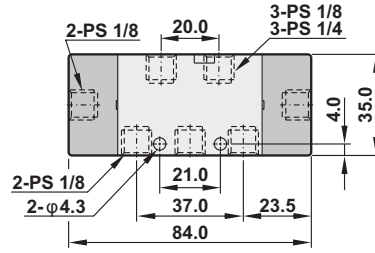
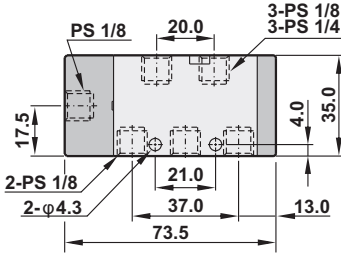
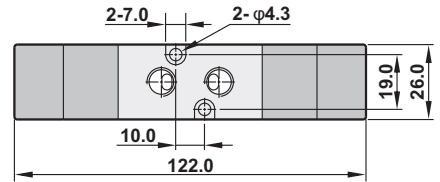
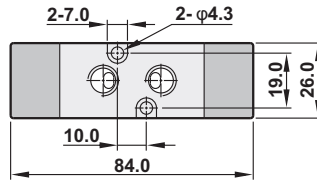
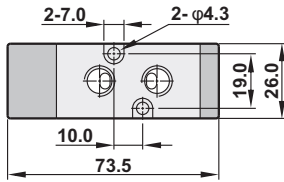
Dimensions



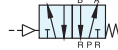
SK520-01S/02S

SK520-01D/02D

SK530-01D/02D



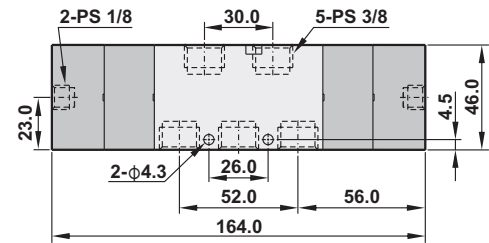
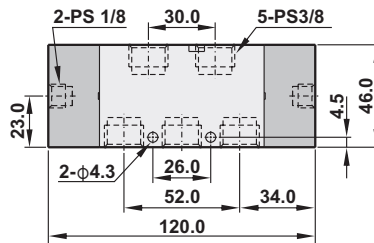
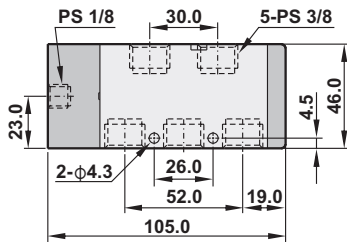
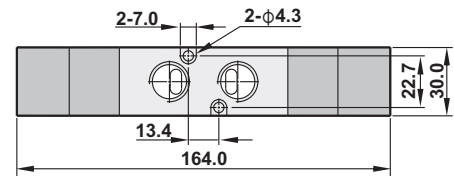
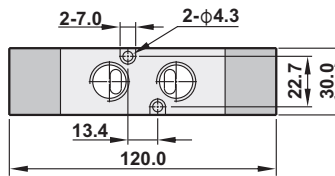
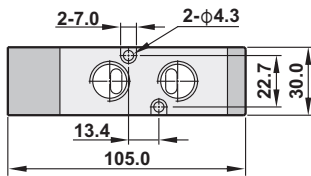
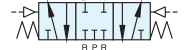
SK520-03S



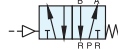
SK520-03D



SK530-03D



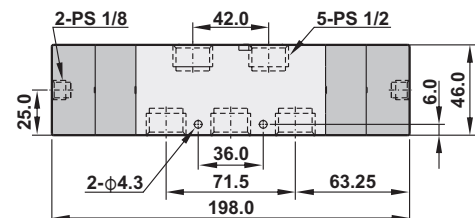
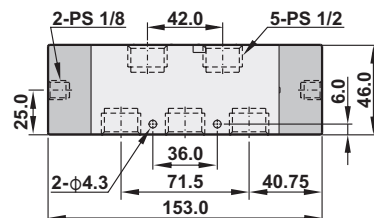
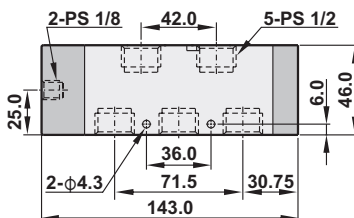
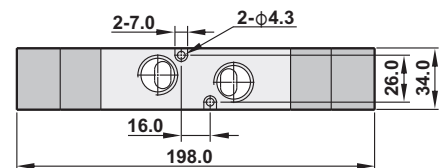
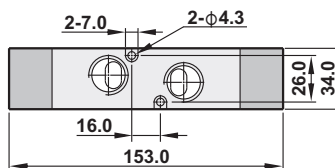
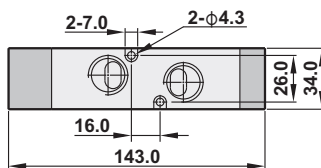
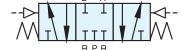
SK520-04S



SK520-04D



SK530-04D



SOLENOID VALVES