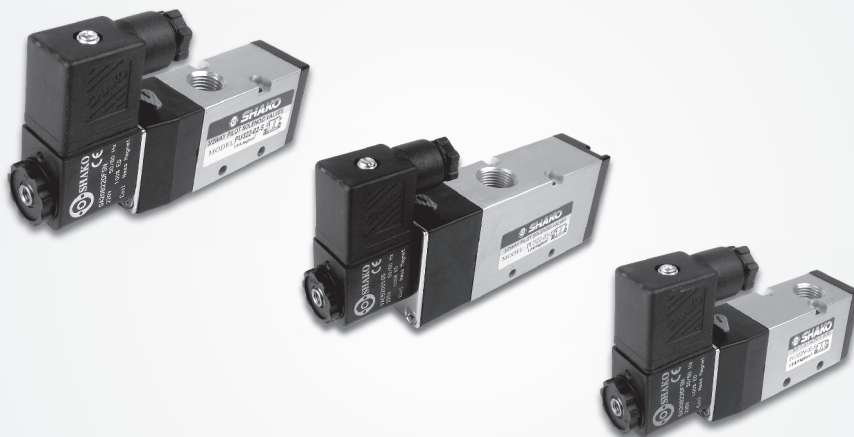


Features

- * Medium size, large flow rate.
- * Lockable manual override for easy operation.
- * Anodized aluminum body and strict quality control provide a long durability.
- * Ex-proof coil is available, please refer to page 7-6.



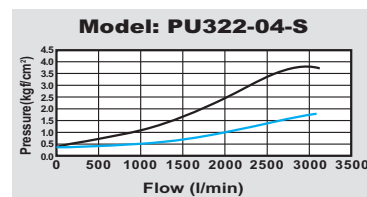
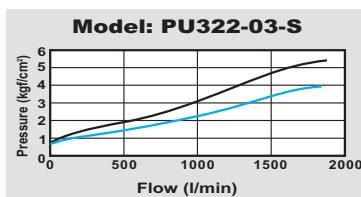
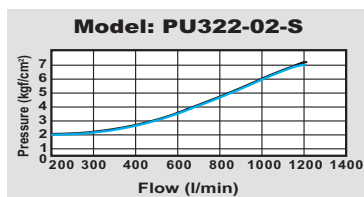
How to order

PU322	N	—	02	N	—	S	2	LED	E		
PU series	Acting style		Port size		Thread		Solenoid	Voltage	LED	Coil type	
3/2 way Pilot acting	Blank N	Normally closed Normally open	02 03 04	1/4" 3/8" 1/2"	Blank N	PS NPT	S Single solenoid	1 110VAC 2 220VAC 9 24VDC	Blank (W/O LED)	Blank E	DIN Ex-proof

Specifications

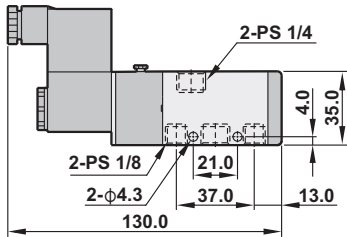
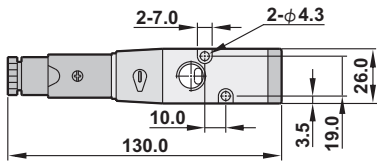
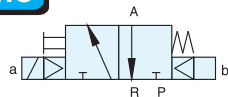
Model	PU322(N)-02-S	PU322(N)-03-S	PU322(N)-04-S
Port size	1 / 4 "	3 / 8 "	1 / 2 "
Fluid	Compressed air		
Sectional area	18mm ²	35mm ²	70mm ²
Acting	Internal pilot		
Operating pressure range	2 ~ 8 kgf/cm ²		
Max. operating pressure	9.9 kgf/cm ²		
Ambient temperature	-10°C ~ 50°C		
Duty cycle	100% ED		
Coil type	DIN (Standard)		
Protection class	IP65 (DIN 40 050)		
Insulation class	F		
Voltage tolerance	±10%		
Standard voltage	220VAC, 110VAC, 24VDC (The other voltage is optional)		
Net weight	280g	450g	685g

Flow chart

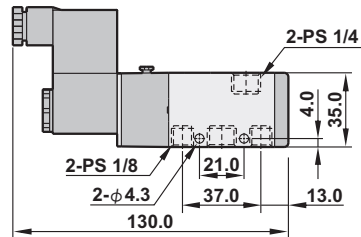
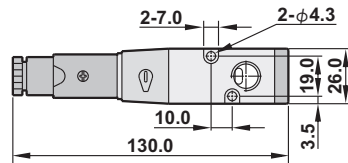
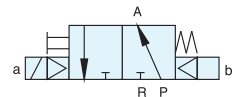


— Dimensions

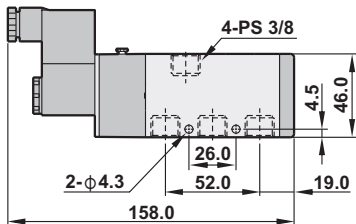
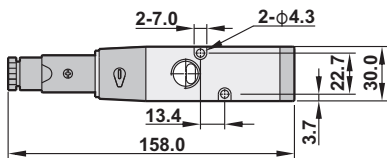
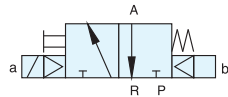
● PU322-02-S



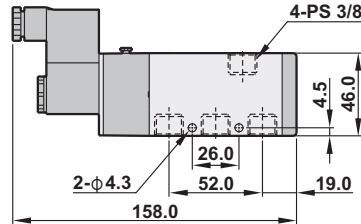
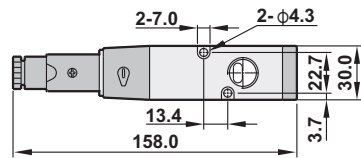
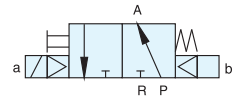
● PU322N-02-S



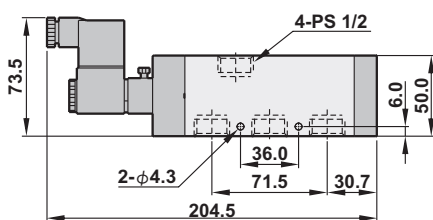
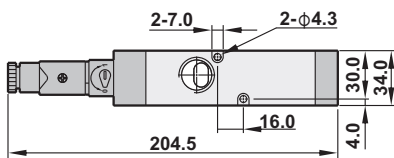
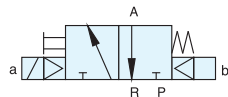
● PU322-03-S



● PU322N-03-S



● PU322-04-S



● PU322N-04-S

