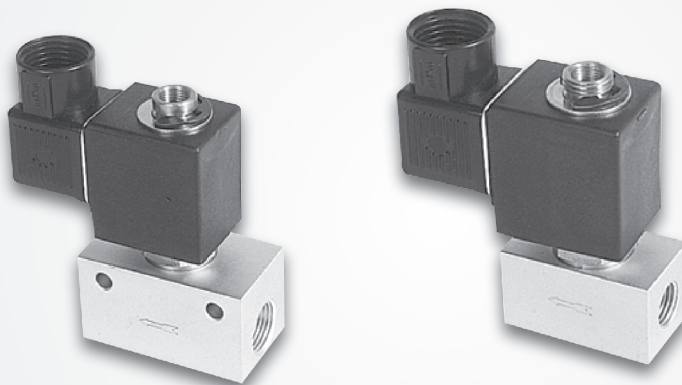


## Features

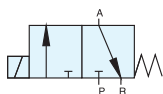
- \* 3/2 way solenoid valve, direct acting for quick and sensitive response.
- \* Large flow rate.
- \* The valve is easy to be installed, which simplifies pipe connection.
- \* Ex-proof coil is available, please refer to page 7-5.



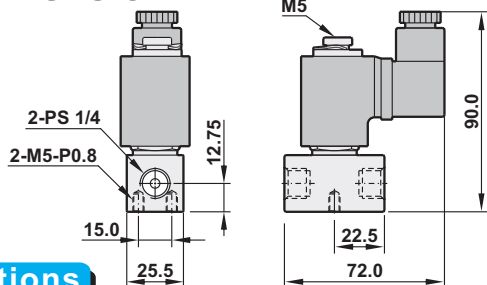
## How to order

<b>AM325</b>	-	<b>02</b>		<b>N</b>	-	<b>S</b>		<b>2</b>		<b>LED</b>		<b>E</b>
<b>AM valve series</b>		<b>Port size</b>		<b>Thread</b>		<b>Solenoid</b>		<b>Voltage</b>		<b>LED</b>		<b>Coil type</b>
3/2 way		<b>02</b> 1/4"		<b>Blank</b> <b>PS</b>		<b>S</b> Single solenoid		<b>1</b> 110VAC		<b>Blank</b> (W/O LED)		<b>Blank</b> <b>DIN</b>
Direct acting		<b>03</b> 3/8"		<b>N</b> <b>NPT</b>				<b>2</b> 220VAC				<b>E</b> Ex-proof
								<b>9</b> 24VDC				

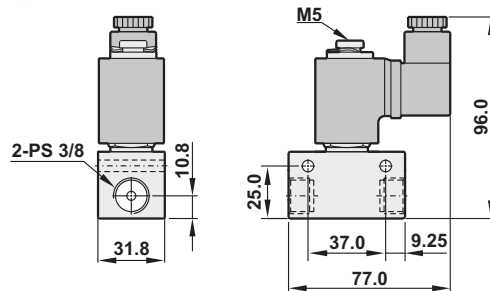
## Dimensions



### AM325-02



### AM325-03

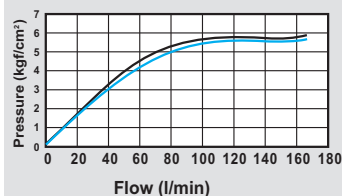


## Specifications

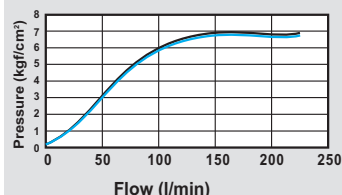
Model	AM325-02-S	AM325-03-S
Port size	1/4"	3/8"
Fluid	Compressed air	
Sectional area	3.8mm <sup>2</sup>	4.2mm <sup>2</sup>
Acting	Direct acting with spring return	
Operating pressure range	0 ~ 6 kgf/cm <sup>2</sup>	
Max. operating pressure	7 kgf/cm <sup>2</sup>	
Ambient temperature	-10°C ~ 50°C	
Duty cycle	100% ED	
Coil type	DIN	
Protection class	IP65 (DIN 40 050)	
Insulation class	F	
Voltage tolerance	±10%	
Standard voltage	220VAC, 110VAC, 24VDC (The other voltage is optional)	
Net weight	270g	370g

## Flow chart

Model: AM325-02-S



Model: AM325-03-S



## Features

- \* 3/2 way solenoid valve.
- The valve is easy to be stacked.
- \* To stack the valve, assembly kit is necessary.
- \* Assembly kit includes O-ring x 1, bolt x 2, screw x 2, nut x 2.
- \* Ex-proof coil is available, please refer to page 7-6.

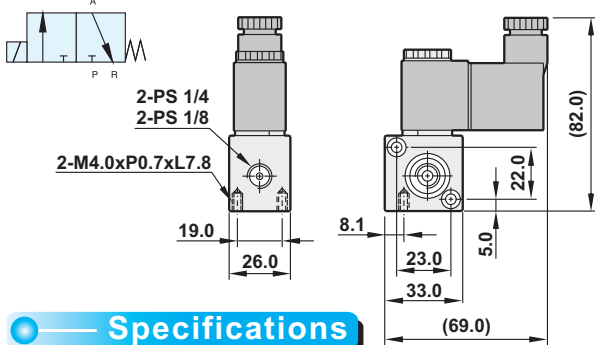


## How to order

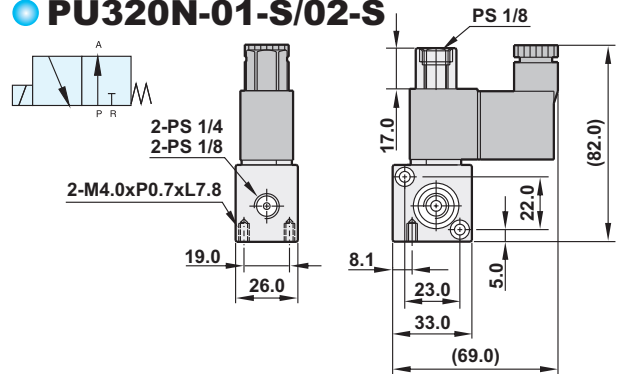
<b>PU320</b>	<b>N</b>	<b>M02</b>	<b>02</b>	<b>- N -</b>	<b>S</b>	<b>2</b>	<b>LED</b>	<b>E</b>							
PU valve series	Acting style		Number of stack		Port size		Thread	Solenoid	Voltage	LED	Coil type				
3/2 way	Blank	Normally closed	Blank	W/O stack	01	1/8"(Option)	Blank	PS	S	Single solenoid	1	110VAC	Blank	Blank	DIN
	N	Normally open	M02	2 valves stack	02	1/4"	N	NPT			2	220VAC	Blank (W/O LED)	E	Ex-proof
			M03	3 valves stack							9	24VDC			
			Mxx	xx valves stack											

## Dimensions

### PU320-01-S/02-S



### PU320N-01-S/02-S



## Specifications

Model	PU320(N)-01-S	PU320(N)-02-S
Port size	1/8"	1/4"
Sectional area	1.5mm <sup>2</sup>	
Fluid	Compressed air	
Acting	Directing acting with spring return	
Operating pressure range	0 ~ 8 kgf/cm <sup>2</sup>	
Max. operating pressure	9.9 kgf/cm <sup>2</sup>	
Ambient temperature	-10°C ~ 60°C	
Duty cycle	100% ED	
Coil type	DIN	
Protection class	IP65 (DIN 40 050)	
Insulation class	F	
Voltage tolerance	±10%	
Standard voltage	220VAC, 110VAC, 24VDC (The other voltage is optional)	
Net weight	180g	160g

## How to stack valve

