

### Features

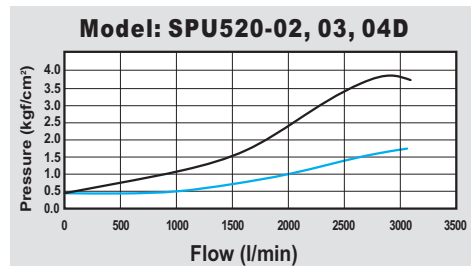
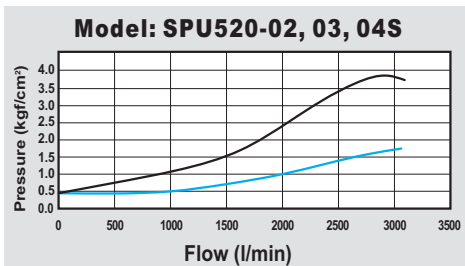
- \* Stainless steel SUS316 body for corrosion resistance.
- \* Ex-proof coil is available, please refer to page 7-6.



### How to order

<b>SPU520</b>	—	<b>04</b>	<b>N</b>	—	<b>S</b>	<b>1</b>	<b>LED</b>	<b>E</b>
<b>SUS316 series</b>		<b>Port size</b>	<b>Thread</b>		<b>Solenoid</b>	<b>Voltage</b>	<b>LED</b>	<b>Coil type</b>
5/2 way		<b>02</b> 1/4" <b>03</b> 3/8" <b>04</b> 1/2"	<b>Blank</b> PS <b>N</b> NPT		<b>S</b> Single solenoid <b>D</b> Double solenoid	<b>1</b> 110VAC <b>2</b> 220VAC <b>9</b> 24VDC	<b>Blank</b> (W/O LED)	<b>Blank</b> DIN <b>E</b> Ex-proof

### Flow chart

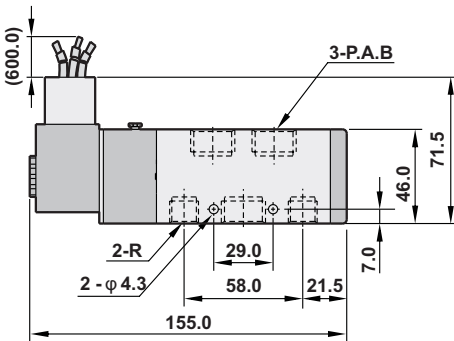
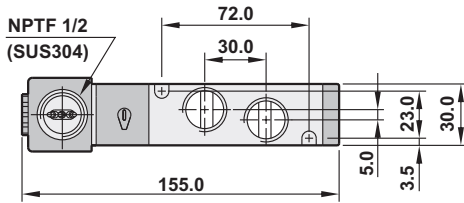
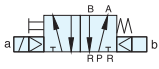


### Specifications

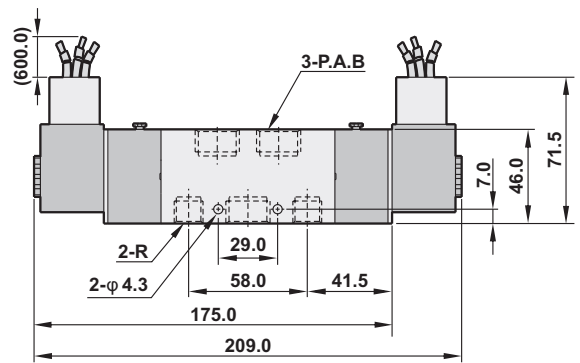
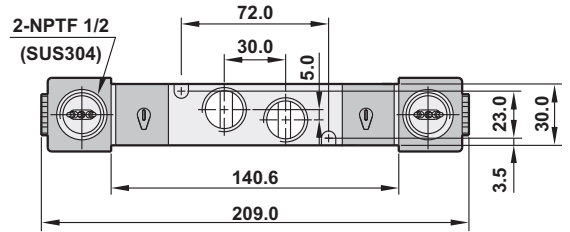
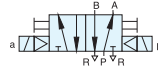
Model	SPU520-02, 03, 04S		SPU520-02, 03, 04D	
Port size	1/4", 3/8", 1/2"		1/4", 3/8", 1/2"	
Sectional area	35mm <sup>2</sup>	65mm <sup>2</sup>	35mm <sup>2</sup>	65mm <sup>2</sup>
Fluid	Compressed air			
Acting	Internal pilot			
Operating pressure range	1.5~8 kgf/cm <sup>2</sup>			
Max. operating pressure	9.99 kgf/cm <sup>2</sup>			
Ambient temperature	-10°C ~ 60°C			
Insulation class	F			
Temperature class	EExmIIT4			
Duty cycle	100% ED			
Voltage tolerance	±10%			
Protection class	IP65 (EN 60529)			
Standard voltage	220VAC, 110VAC, 24VDC (The other voltage is optional)			
Net weight	1000g		1200g	

## Dimensions

### SPU520-02, 03, 04S



### SPU520-02, 03, 04D



Model	A	B	P	R
SPU520-02	1/4	1/4	1/4	1/4
SPU520-03	3/8	3/8	3/8	3/8
SPU520-04	1/2	1/2	1/2	3/8

## Explosion

